

Steptoe Butte Natural Resources

- Significant example of intact Palouse prairie vegetation
- Two known rare plant species
 - Palouse goldenweed
 - Spalding's catchfly
- Historic orchards and apple varieties
- Unique geology



Historic apple orchard



Palouse goldenweed



Spalding's catchfly

Steptoe Butte Recreation

- Paragliding and hang-gliding
- Picnicking
- History and interpretation
- Fun run events

Adjacent property recreation

- Popular hunt by reservation area



Steptoe Butte Paraglider
Photo by Tim Grey



Hang Glider at Steptoe Butte

Steptoe Battlefield History

- 1858 site of the Battle of Pine Creek
- Also known as the Battle of Tohotonimme
- 1914 stone monument erected on site of their final stand
- 1950 site became a state park
- 1976 added to National Register of Historic Places



Steptoe Battlefield State Park
Photo by Jim Nebel

Steptoe Battlefield Facilities

- Four acre day-use site in Rosalia
- Interpretive marker
- Interpretive panels
- Picnic table



How State Parks' Plans

Classification and Management Planning (CAMP)

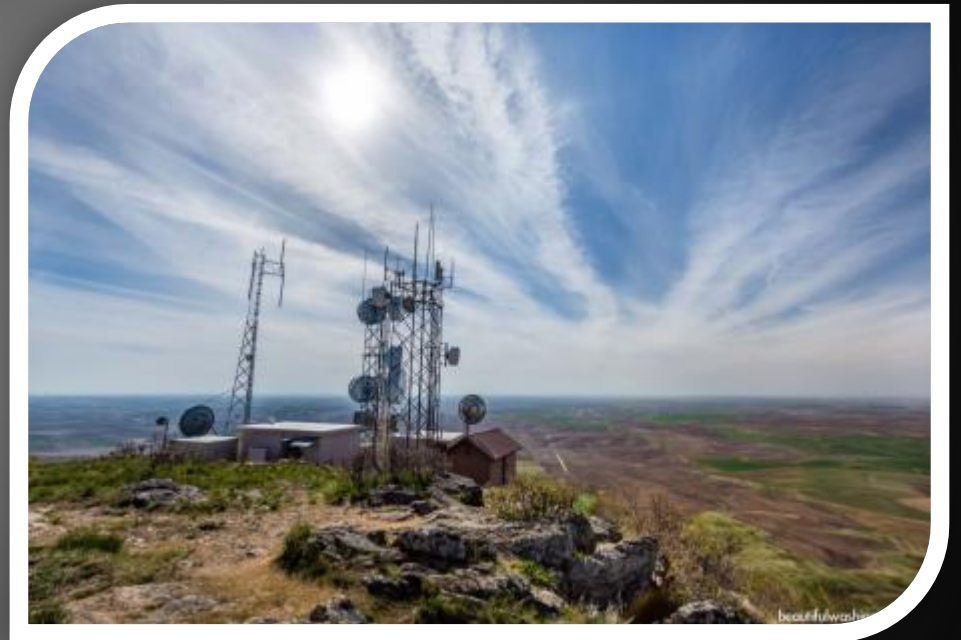
Why plan?

- Provides a current assessment of park assets and future needs
- Provides direction for land use, trails, interpretation, and natural and cultural resource protection
- Strengthen existing community partnerships and identify new partnerships
- Also doing plans for Palouse Falls, Lyons Ferry, Lewis and Clark Trail and Fields Spring
- Have done plans for nearly 100 state parks



CAMP End Products

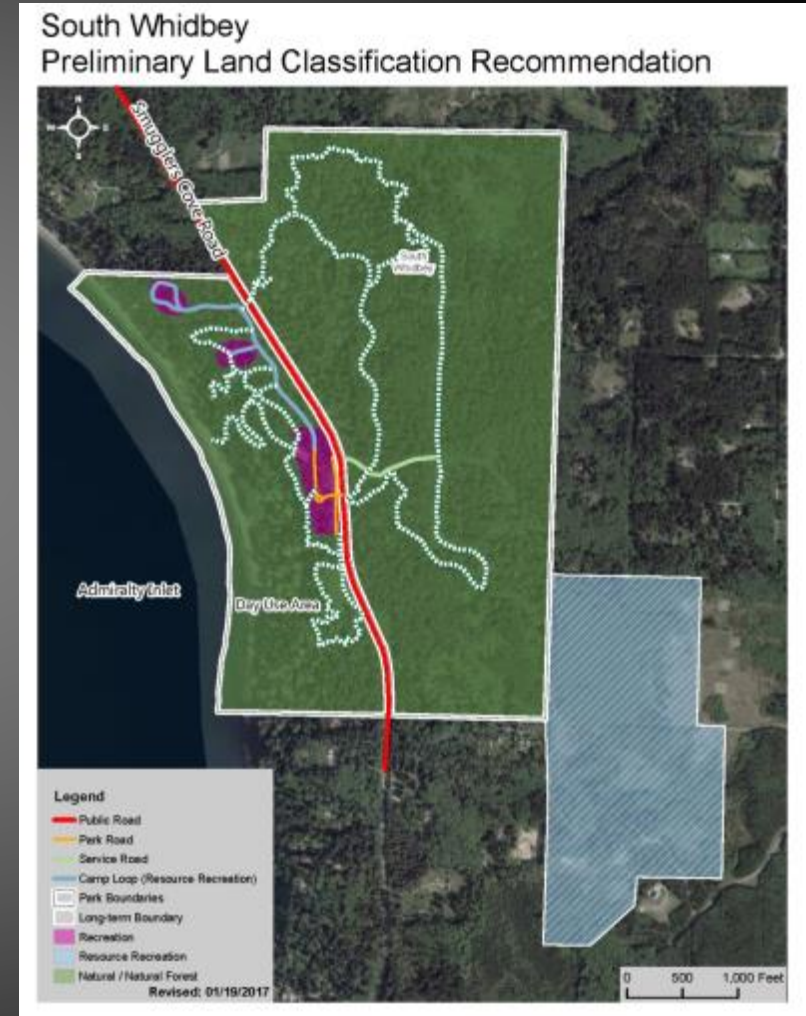
- Land classification
- Long-term park boundary
- Park management plan



Steptoe Butte State Park

Land Classification

- Similar to county or city zoning
- Internal to the park and sets use and development intensities
- State park classifications
 - Recreation
 - Resource Recreation
 - Heritage
 - Natural



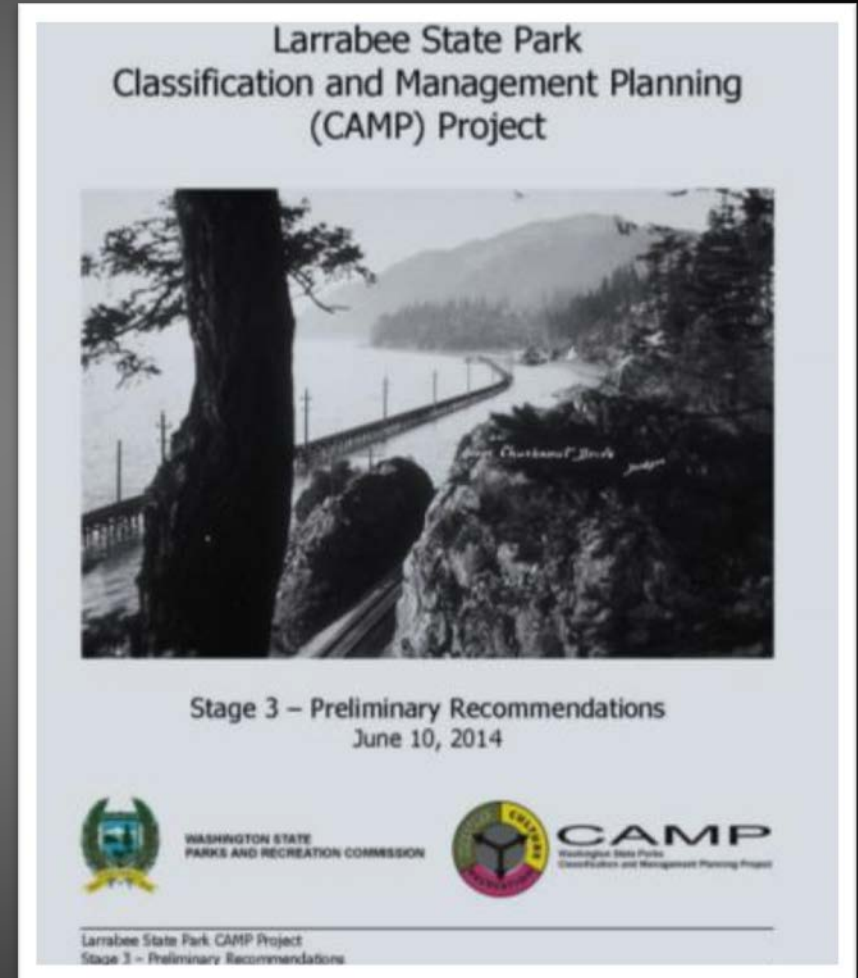
Long-Term Park Boundary

- Properties that further agency's recreation and conservation mission
- Identifies agency-owned properties not essential to park mission



Park Management Plan

- Responds to issues and concerns expressed by you and agency staff
- How the agency intends to manage the park's natural, cultural and recreational resources



CAMPs Four Stages

Stage 1. Identification of park issues



Stage 2. Development of alternatives to address issues

Stage 3. Preliminary staff recommendations

Stage 4. Final recommendations to the Commission

Stage 1 - Issue Identification

What is an issue?

- Anything you think is important for us to consider in our plans
- Anything agency staff think is important and want to communicate to you



South Whidbey State Park Public Meeting

Stage 2 – Develop Alternatives

Exploration of different approaches to address issues such as . .

- Native plants and noxious weeds
- Historical and cultural features
- Recreational use
- Existing and future facility needs
- These alternatives are presented in the second public workshop



The road to Steptoe Butte

Stage 3 – Preliminary Recommendations

Combination of the approaches explored in Stage 2 applied to . . .

- Land classification
- Long-term park boundaries
- Park management plan
- The preliminary recommendations are presented in the third public workshop



Stage 4 – Final Recommendations

Final recommendations . . .

- Land classification
- Long-term park boundaries
- Park management plan
- The final recommendations are presented at a regularly scheduled meeting of the Parks and Recreation Commission

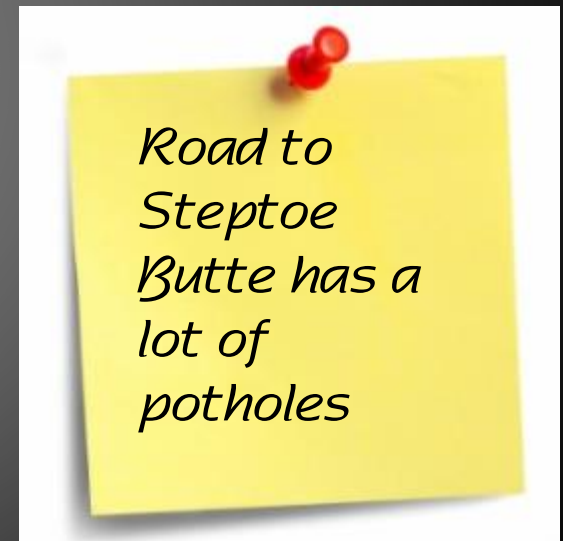


Now It's Your Turn

- Are there new facilities you'd like to see?
- Are there natural resources we need to better protect?
- What are you doing for recreation at the site?
- Would you like to volunteer or be part of a Friends groups?
- Are their neighboring properties with shared conservation or recreation objectives?

Let Us know

- Stations set up for each park
- Write down your issues, concerns and questions
 - Sticky note
 - Comment box
 - Tell a staff person and we'll write it down
- One comment per sticky note please
- Reconvene



Next Steps

- Post meeting materials and comments on website
- Develop alternatives to address issues identified tonight and through submitted comments
- Review alternatives in our next public workshop
- Other CAMP planning happening in the area
 - Palouse Falls State Park
 - Lyons Ferry State Park
 - Lewis and Clark Trail State Park

Adjourn

- Email additional comments to Randy Kline, Project Coordinator, at randy.kline@parks.wa.gov
- Visit the project website at <http://bit.ly/SteptoePlan> or search on "Steptoe Butte planning"