



Issaquah Creek Restoration



Restoring Natural Processes



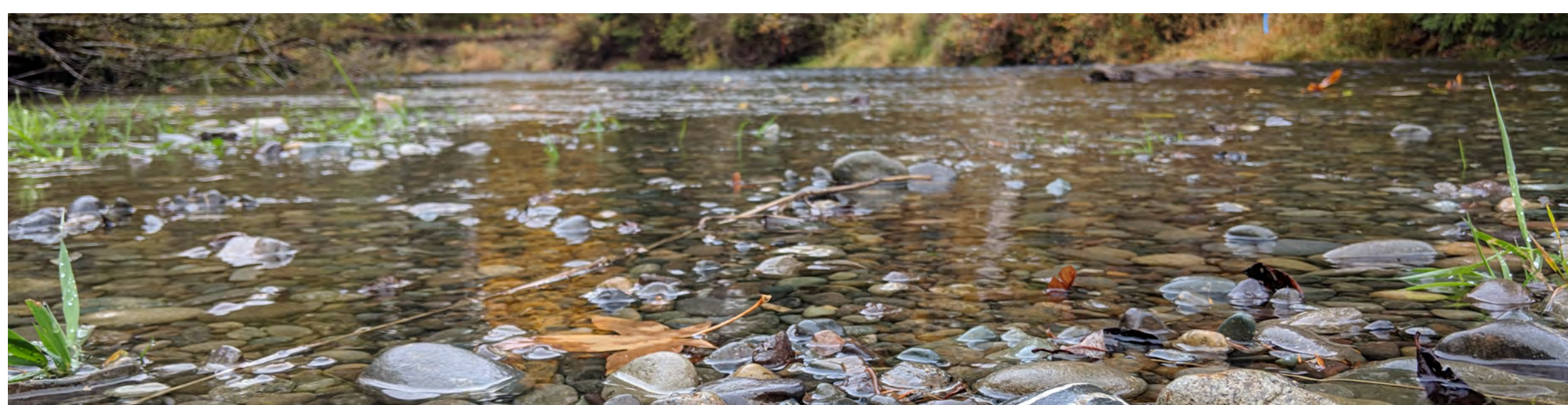
Recovering Vital In-Stream Habitat



Engineered Log Jams



Wood Recruitment



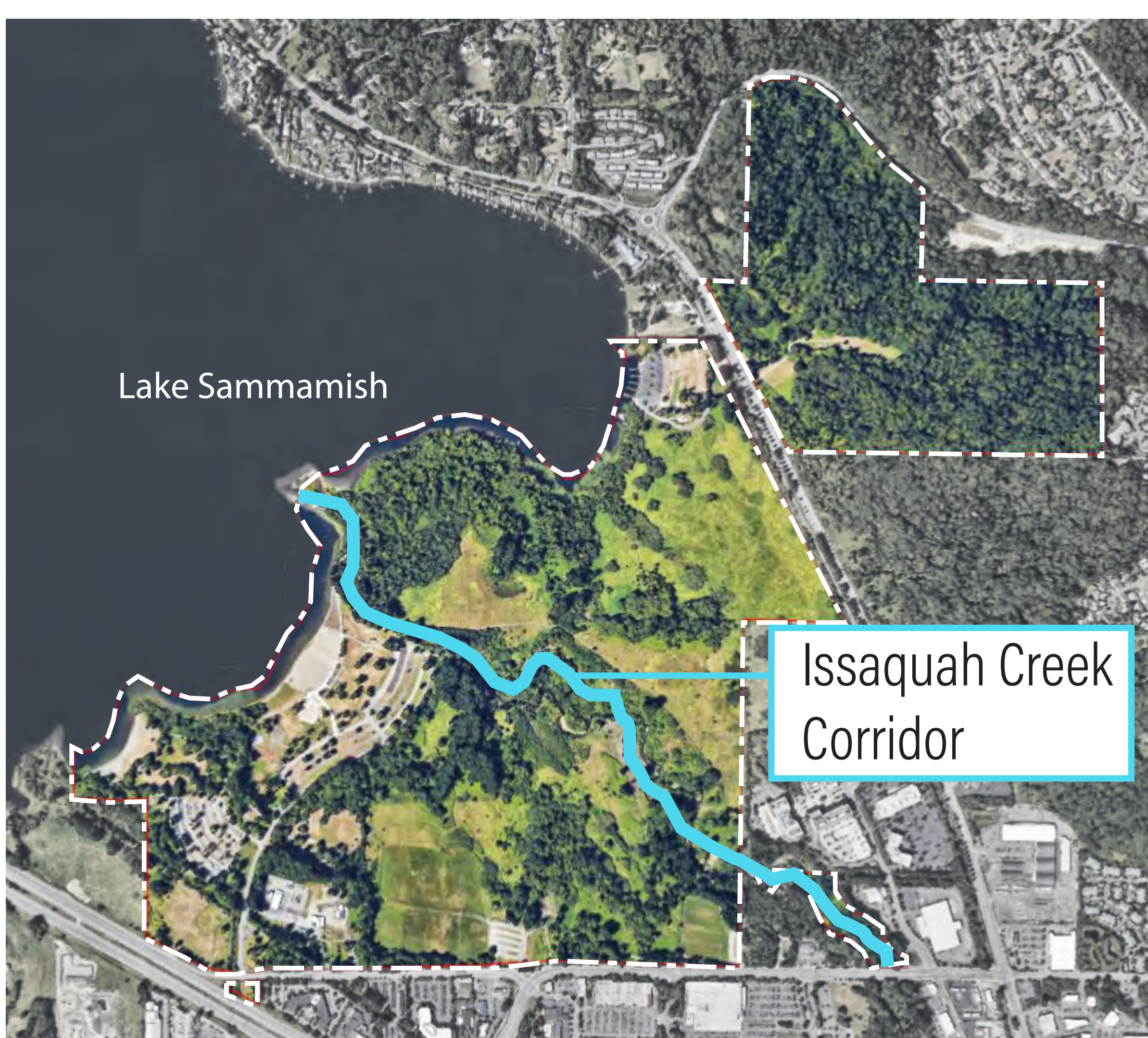
Planning is underway for ecological restoration of over a mile of Issaquah Creek within the Park boundaries. Strategies for improvement have been formulated, alternatives evaluated, and conceptual designs and regulatory considerations are in development.

Key Features

- FOCUS ON CHINOOK SALMON AND OTHER SALMONIDS.
- IN-STREAM HABITAT IMPROVEMENTS FOR SPAWNING, REARING, RESTING, MIGRATION, FOOD PRODUCTION, PROTECTIVE COVER, AND HIGH-FLOW REFUGE
- WORKING WITH NATURAL PROCESSES OF CHANNEL MIGRATION AND FLOODPLAIN INTERACTIONS
- RECONNECTION OF THE FLOODPLAIN AND CHANNEL
- ADDITIONAL LARGE WOODY MATERIALS
- NATIVE PLANT RESTORATION TO IMPROVE WATER QUALITY

Partners

- WASHINGTON STATE PARKS
- MOUNTAINS TO SOUND GREENWAY
- LAKE WASHINGTON/CEDAR/SAMMAMISH WATERSHED (WRIA 8) TECHNICAL COMMITTEE
- KING COUNTY WATER AND LAND RESOURCES DIVISION
- WASHINGTON STATE RECREATION AND CONSERVATION OFFICE



Location Map



Lake Sammamish State Park Master Plan Update

Public Open House

June 25, 2019

