

Mount Spokane State Park Master Plan

Sept 29 Planning Workshop Summary Notes

Web Version – Updated October 28, 2024

Introduction

State Parks hosted a planning workshop at Bear Creek Lodge on September 28, with over 30 community member volunteers. Participants were selected through an online application process and were organized into groups representing four geographic areas (“focus areas”) of the park (Bald Knob, Quartz, Summit and Basin). The groups were asked to answer questions specific to their area and the overall park, including park vision, long-term boundary, land classification, trails, parking/circulation and other topics. The Focus Area Assignments are included at the end of this document. Each group presented their recommendations to the entire group of volunteers and collected additional comments for each focus area. The results are summarized below and will be considered in the next steps of the master plan development process.

Bald Knob Focus Area

Park Vision

- Expansive rustic and natural forested park, that includes alpine, significant recreation, all-season use, conservation, education, trails and native wildlife, unique vistas and views afforded by the elevation. Maintain opportunities for a wide variety of abilities and uses.
- Keep name Mount Spokane, focus on unique branding, consider tribal name to be highlighted as well.

Theme/design

- Rustic. It’s a forested park with minimal development. Stone elements, Vista house style architecture, CCC architecture, work in Bear grass and Huckelberry.
- Develop a unifying symbol for the park – the skyline outline is essential to its branding

Bald Knob

- Expand camping to the original size planned beyond just the 8 there now, but otherwise focus on camping options in other areas of the park where there will be less impact and topography allows for it.

- Functions as a hub, improve signage “you are here” and maps – expand interpretive info (cultural, historical, forest management health education)
- Expand access and parking
- Provide and enhance existing viewpoints – selective thinning
- Add accessible trail with interpretation
- Add beginner trail options

CCC Heritage Area

- Should function as a unit with Bald Knob – plan together – make accessible trail to connect the two sites.
- Added information on historical/cultural significance – education flora/fauna - tell more of the story on signage in the cabin.
- Draw on ideas from 2009 interpretive plan for trail, etc. Further identify historical elements of the site and sign them. Many elements in the plan were not implemented but they are still viable and relevant. No need to reinvent the wheel.
- Expand summer uses
- Highlight as a key park feature/ enhance it as a destination
- Preserve building, discourage illicit uses, keep ranger presence to protect resources
- Expand parking capacity at Upper Kit Carson Trailhead.
- Maintain ‘hidden gem’ quality
- Improve and add signage
- Educate users on equestrian uses allowed

Long-Term Boundary

- Acquire the parcels within the current LTB
- Surplus or land swap random distant parcels outside the current LTB
- Add Riley Creek SW corner to LTB
- Consider potential to expand LTB where Inland Empire Paper trails are
- Consider enforcement impacts associated with acquiring new land

Land Use Classification

- Keep uses as is in the LTB
- Add signage to identify allowed uses (e.g. conditional uses in heritage area, such as mtn bike and equestrian) to avoid confusion – also identify boundaries of heritage area if certain uses are not allowed outside of it.

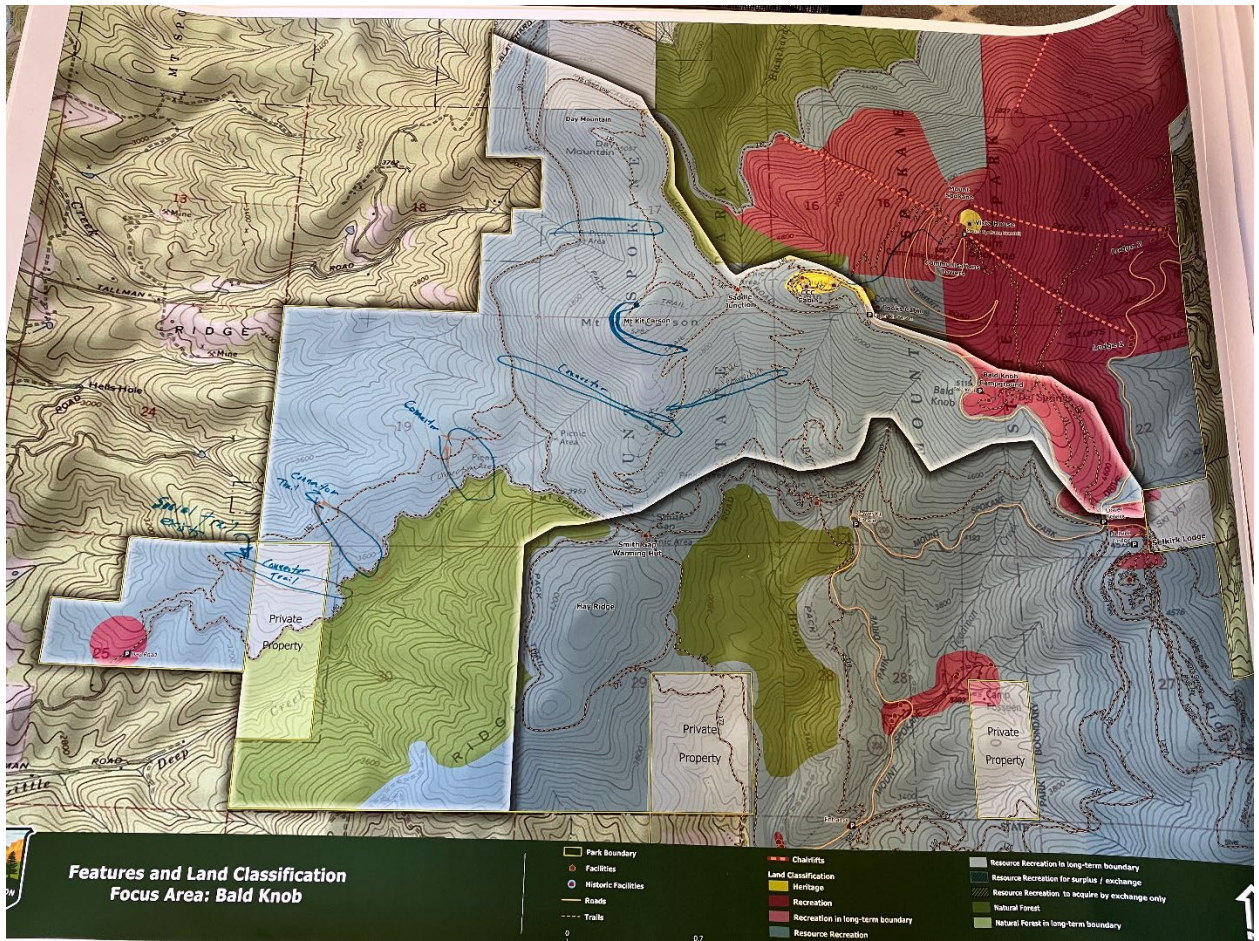
- Educate park users on the “why” behind allowed and prohibited uses to support compliance.
- Keep Riley Creek Resource Recreation and Natural Forest Area.

Trails and Trailheads

- Day Road Trailhead should be developed and expanded to add access and disperse use from other parts of the park and to anticipate increased use in the future with a multi-use trail.
- Desire for shorter loops than currently available and connections to other trails
- Improve signage - especially at junctions: wayfinding, maps, educational and interpretive
- Educate users on types of uses allowed and trail etiquette
- Add hiker only trail to summit from Bald Knob
- Lack of inventory in beginner, easy, family friendly trails.
- Explore potential for 5,000-foot elevation around the mountain multi-use trail
- Enhance views (especially on Kit Carson Loop), brush clearing, fire safety improvements.
- Consider separating users on Upper Trail 140.

Circulation, Parking and Use Distribution

- Mostly a winter issue
- Need for more capacity, considering future use
- Need for dispersal of use
- Consider weekend shuttle from Bear Creek during peak season or even in partnership with STA and park n rides.
- Need for restroom facilities in parking lots, especially at Lower Kit Carson Trailhead
- Consider potential for equestrian parking at Day Road Trailhead



Quartz Focus Area

Vision

Mt. Spokane is a park in which we should “go big”. People enjoy the park and want it to be a vibrant/active, fun, open/inclusive/accessible, expressed a wish for improved facilities in that timeline, sensitive to wildfire risks/fire wise; aspirational words such as conservation, inspiring, diverse, heritage, unique, keystone park came up; recognizing indigenous histories; similar to a miniature National Park. Current name is fine, but if local tribes wish for it to be called something else, the group is largely open to alternatives.

Facilities/architecture

Preference for local/native stone, wood to reflect the resources in the park. Bear Creek Lodge and Vista House as anchors/ design inspiration. A museum/info center would be cool. Community forum for design feedback, perhaps like a design review process. More overnight facilities (maybe like backcountry camping, yurts, or huts in the wintertime). Other facilities to enable year-round access.

Selkirk Lodge

- Vision: a functional space for groups to gather. Modernize existing building, nothing extravagant needed. It’s not meeting expectations as it is currently.
- Services & amenities: Enhanced kitchen for potlucks/events, outlets for Crock pots, more bathrooms, improved wifi and cell reception.

Long-Term Boundary/Land Classification

- Acquire land south of the park (currently Warner property), down to and including Newman Lake.
- Expand the Natural Forest Area designation around Ragged Ridge further to the southwest to include Hyssing Spring.
- Acquire “Larch Mountain” area north of existing boundary. Great roads for gravel biking.
- Designate Roundtop Mountain as resource recreation, restore to more natural ecosystem conditions.
- Review designation of Ragged Ridge, perhaps delete trail from maps depending on resource evaluations. Out and back trails aren’t super interesting for hikers, perhaps re-route trail below summit/along contours of the ridge.

Trails and Trailheads

- Multiple uses (compatible, rather than specific trails): XC mtb, gravel biking, huckleberry picking. NOVA hut trail for family-friendly trail. No single-use trails suggested.
- Provide opportunities for beginners and for others who may have physical or other disabilities that constrain use of traditional trails
- Skijoring instruction- the SNSA has been conducting two clinics each season that fill up with 12 participants each session. So, there could be more instruction made available in the future
- Consider opening up skijoring on certain days of the week on all trails. This may not be too popular but it would disperse the dog people teams eliminating congestion on Linder Ridge Trail. Sundays get very busy with two-way dog team traffic, which can cause safety issues. Also, No Skijoring signs are posted on trailheads in an attempt to keep dog teams on the allowed skijoring trails. Having only certain trails only available for skijoring makes rules and signs more complicated and rules harder to enforce or be understood.
- Treatments/considerations: group said trail signage is good.
- Connect Nordic and downhill ski area? Could be useful for sharing concessions, families with people doing different types of skiing. Overall consensus was this is not desired.
- Suggestion for accessible hiking (but maybe also other beginner modes) trails from Selkirk lodge... with interpretation, wheelchair accessible, etc.
- More singletrack trails desired. Group agrees single track could be compatible with Nordic trails.
- Work with other agencies/landowners on Forest Legacy Project (Spirit of Spokane / Spirit of Idaho projects).

Overnight accommodations

- Desire for Nordic ski in/ski out.
- NOVA hut with other satellite huts for sleeping.
- Tent sites at Eagle Crest.
- Add huts, CXT, XC trails Round Mountain vicinity (if acquired).

Circulation, Parking & use distribution

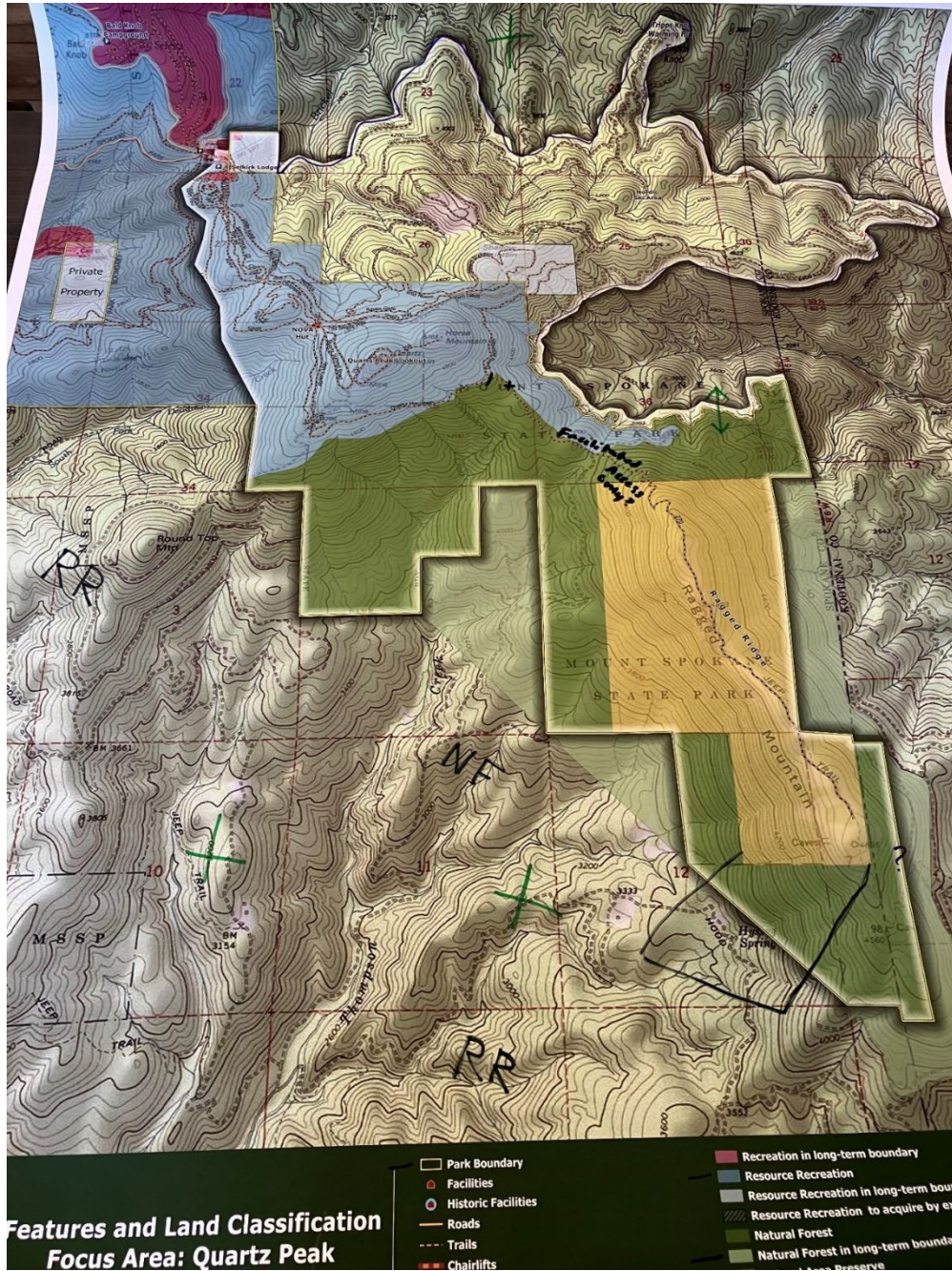
- Park and ride in the valley or near bear creek lodge would be useful. Connect with local transit authority to brainstorm. Maybe concession?

- Wildfire evacuation plan. How do you get out if SR 206 is not an option? Logging roads may be an option, but gates, confusion, deadends, etc.

Other

- Restrooms are ok. Quartz Mt/ Buckland junctions 9, 10, outer limits could use more restrooms.
- Warming huts are ok as is.
- Horse mountain: consolidate/eliminate user-built trails. Add single track loop/add trail around the meadow.
- Work on summer recreation options through IEP partnership; continue great user group and stakeholder partnerships and engagement

- Expand/highlight inclusive trails for summer use on trails and at Selkirk Lodge. More use year-round = better utilization of facilities, more enjoyment of the park.



Summit Focus Area

Park Vision

- Wilderness, wildlife and peaks, views and pinnacles; family-oriented community ski area; historic, diversity of users and experiences
- Other vision components – tallest, largest, oldest, beauty, copper bowl, recreation

Long-Term Boundary & Land Classification

- Include lands northwest of the park where there are currently islands of state park lands and where it appears there are additional forest areas that would logically be part of the natural forest classification
 - North area is less developed, has lots of wildlife, could be opportunity for trail expansion; on the other hand, can continue to be a buffer between developed park areas and natural environment
- Consider any changes to LTB that would help create a “Round the Mountain” trail
- Linder Ridge east
- Twin Lakes east
- Consider lands east of ski area/park boundary – private parcels – good potential connection from ski area to Brickle Creek Road to Nordic
- No recommendations were made to modify existing Land Classifications in this Focus Area.

Camping and Other Overnight Accommodations

- Look for opportunities to add primitive camping, to support entry level backpackers
 - Kit Carson and meadows? In doing so, recognize the fragility of meadows and need to be cautious how this might be done.
- Glamping opportunity at Ski and Snowboard Park
- Consider Vista House for overnight accommodations

Vista House

- Provide clarity about how it’s managed; how to use.
- More interpretation - history
- Field trips for youth
- Use for community events
- Retain (or provide) year-round access
- More summer activities – e.g. Brews & Views

- Seasonally appropriate
- Keep it safe and up to date, preserve historic character and features
- Modernize electrical and other aspects if possible (e.g. seating, toilets?)
- Summer – address the yellow jackets and mosquito issue

Summit Road

- Very costly to improve; very narrow and “scary” to drive
- Consider minimal improvements to make it safer e.g. guardrails
- However, group prefers saving the funds it would take to improve the road to current standards and investing in other opportunities:
 - Consider partial closure – e.g. certain days or times
 - Restrict private vehicle access to the top if:
 - There are other ways to access the summit – and these options support gear transport (e.g. shuttle)
 - Retain bike and hike access
 - The savings in funding will support other infrastructure needs

Trails & Trailheads

General

- More single track vs. road track (e.g. Trail 130)
- Improve signage, wayfinding and maps
 - Make available on-line and in print form
 - Include in budget

New Trails/Routes

- Consider alternate routes for hiking from Bald Knob to Summit – two potential alignments shown on map
- Provide east-side trail to the summit from Trail 130 (vicinity of Lamonga Pass).
- Consider new MTB trail corridor to the north of Brickle Creek Road
- Add new sections of trail in the utility corridor (utilities are now underground) for winter and summer access between Lodge 1 and Lower Selkirk Trailhead.
- New trail loop to Selkirk Lodge and back to Lower Selkirk
- MTB trail – Vista, L1, L2
- Provide two “green” (easy) trails from Vista House down
- Provide uphill ski and snowshoe corridor/trail – from Bald Knob to summit
 - For summer hiking as well as winter use

- From Smith Gap to Summit

Maintain and Improve

- Trail 290 is problematic
- Groom Trail 130
- Address hikers/mountain bike conflict on Trail 140. Consider designating Upper 140 for mountain bikes only; develop separate hiker trail.

Circulation, Parking and Use Distribution

- Downhill ski area parking: Improve road and improve parking lot – width and configuration – to park more vehicles intuitively
- Selkirk Lodge Parking
 - Address multi-use parking near Selkirk Lodge – look at previous expansion plans
 - Consider providing designated trailer slots for snowmobile parking
- Continue and expand the shuttle system to the ski area
- Provide premium parking spots closer in to the ski area – at premium price?
- Develop more formal access to park at Day Road entry
- Explore developing a secondary access point in north area of the park (e.g. Blanchard Creek Road)

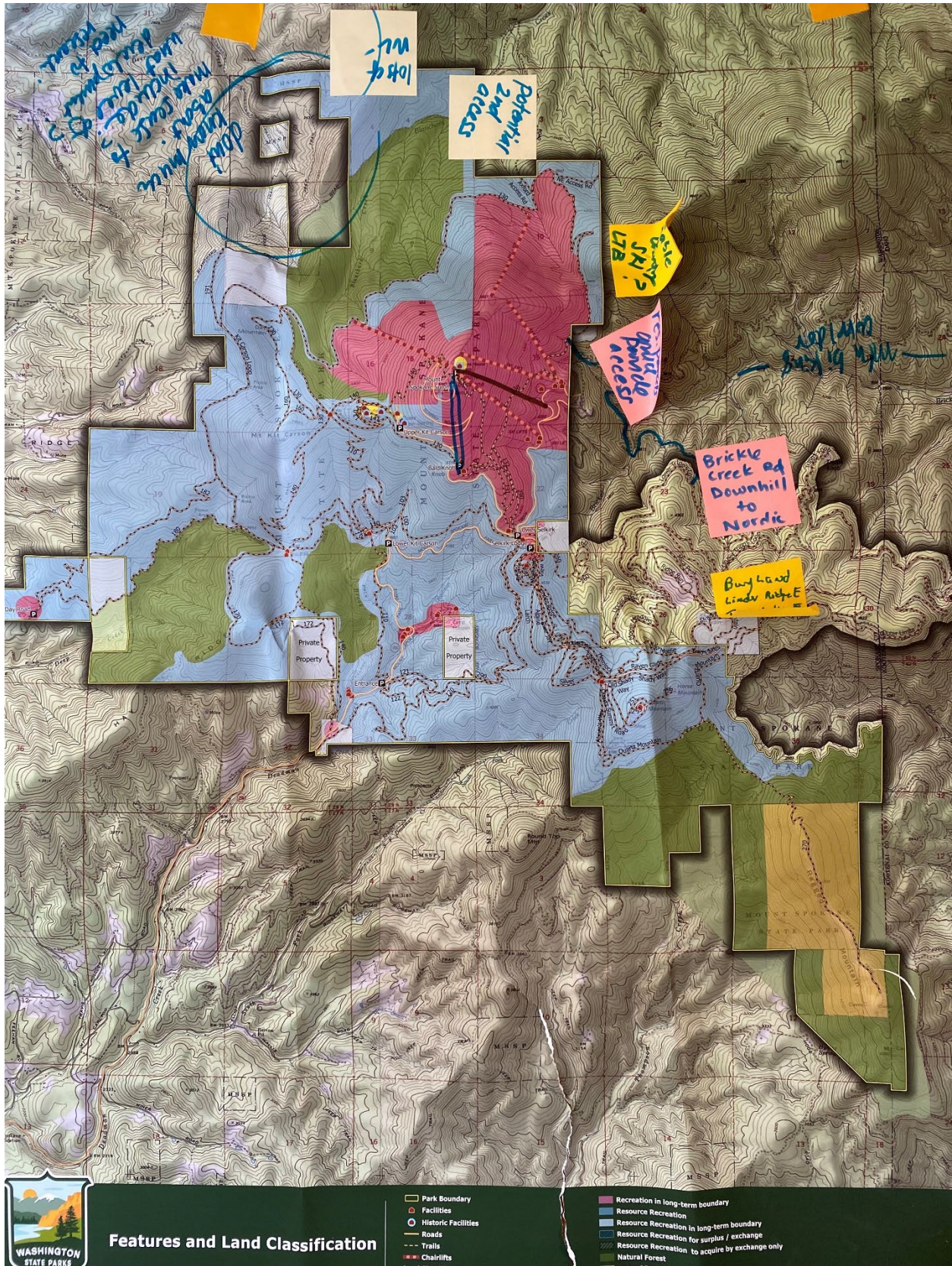
Downhill Ski & Snowboard Park

- Lodge 1/Vista Cruiser Lift is the top priority
- Maintenance building is a second priority
- If there is a plan to continue and expand access in the summer, need to improve the road
- Continue to provide more uphill ski access
- Look for ways to expand the summer youth programs
 - Are there ways to support families who have to transport their kids (e.g. provide access to facilities and/or shuttle for youth programs)?
- Would like to add a tubing hill in this area
- Support summer lift access
 - Vista Cruiser lift
 - Shuttle from Bear Creek Lodge
 - Build more trails for downhill MTB

- If there are other ways to access the summit – e.g. chair lift for bikes, hikers and other, and/or shuttle, more support for closing the Summit Road to private vehicles
- Seek other sources of funding for needed infrastructure – e.g. fund raising, capital campaign
- Group supports a vision of “year-round”
- Gladed skiing is a way to enhance visitor experience; is this possible in some areas?
 - Three areas on the map identified for potential gladed ski routes – numbered 1-3 on the map, in order of highest priority
- Priority area along existing downhill ski run(s) outlined on map for fuel reduction, safety/snag trees and forest health

Other

- Address ADA access at Lodges 1 and 2
- Provide more beginner- and entry-level trails and opportunities
 - Design Bear Creek Lodge Welcome Center as a hub for entry-level
 - 1–2-mile loops
 - Interpretive trail
 - Tubing –affordable, accessible to youth, don’t need specialized equipment or training
- Ski bus from downtown
- Hang gliding – group would like to launch from Mount Spokane and land somewhere else
- Provide traffic signage at hairpin turn



Basin Focus Area

Park Vision

- A four-season, high-quality restorative and approachable gateway to outdoor experiences that promotes habitat conservation. *Other notes: emphasize quality over quantity, ensure accessibility, provide resource management (both preservation and conservation – passive and active management).*
- Current name: Ok. Quick consensus on this topic.
- What features/facilities/architectural or other thematic treatments should be used to define the type of park and experience? Honor the history through architecture. Utility natural materials that help structures and features blend into the landscape. The State Parks colors (brown/green) work great for this park. Ensure authenticity through material selection – no plastic or “fake” stone.

Bear Creek Lodge & Park Gateway

- What services should be provided at Bear Creek Lodge and what main functions should the lodge serve?
 - Park information center – this is not just a front desk with brochures, but a resource center that includes books on the area (history, plant identification, etc.).
 - Park office – relocate staff to the lodge to be available to visitors, etc.
 - Meeting rooms – Provide a variety a community meeting rooms to serve the mountain, organizations, concessionaires, and the surrounding community.
 - Interpretive Center – Provide a small, but well-curated interpretive center that tells the story of Mount Spokane (ski history, geology, wildlife, Tribal context, etc.). Tombstone Territorial Park’s visitor center was identified as a potential model.
 - Environmental Learning Center or space for educational activities to occur. This includes potentially both indoor and outdoor space.
 - Year-round food and beverage service – Hot chocolate, beer, burritos, sandwiches, etc. More of a quick service model envisioned vs. restaurant.
 - Equipment library / rental and park store providing basics – Fitness Fanatics recently went out of business, leaving a rental void on the mountain for equipment other than downhill ski/snowboard (currently provided by MS2000).
 - Special event space – Weddings and other group events discussed.
 - Shuttle / transit station – Seen as a logical location for a station. Could be designed for both internal shuttle and future external transit service (i.e. via STA).

- Identify other park improvements within the Basin Focus Area that may need to be implemented to support the envisioned functions of the lodge?
 - Parking
 - Signage and branding
 - Accessibility
 - Restoration of the lodge – it's iconic
 - Outdoor fire pits and gathering spaces
 - Picnic shelters
 - Security components
 - Trails – short loop / interpretive trails tied into the lodge.

- What, if anything, should be considered to denote this as the gateway to the park? What are important aspects of a gateway experience? (e.g. signage, themed architecture, customer services, etc.)
 - Well-defined – it's should be very clear to visitors that they have arrived at the park. Example of Mount Rainier brought up
 - Landscaping treatments should be component
 - Pull-off area with kiosk
 - Nice sign / archway using native materials
 - Provide a good first impression
 - Removal of the garage w/ living unit above may be warranted

Long-Term Boundary

- What areas, if any, should be included in the long-term boundary?
 - See map for areas that should be included in the long-term boundary
 - First priority is on acquiring in-holdings within this Focus Area (i.e. Riley Creek and Camp Fosseen)
 - Second priority is acquiring adjacent private commercial timberland (i.e. IEP, Riley Creek / Priest River Land Co.) to preserve additional habitat. The completion of the North Spokane Corridor project will likely place pressure on these properties, which could see them sold, fragmented, and uses inconsistent with or impactful to the park.
 - Group also expressed desire to see a policy supporting preservation of wildlife corridors adjacent to or connected with the park (but for State Parks not to have an ownership role in those)

- What areas, if any, should be considered for surplus? None.

Land Classification

- Consider the existing land use classifications. Are there current places in the park where the current use of the land is different from the land classification? If so, are the current uses consistent with what is envisioned for the future? If so, identify the new land use classification for this area. Note: land classifications can be assigned to existing polygon areas or could be assigned to parts of existing land classification areas. Use the maps and tracing paper to record your recommendations.
 - See map
 - Some expansion of Natural Forest Area south of Hay Ridge
 - Some reduction of Natural Forest Area east of Riley Creek inholding (i.e. “Phase 1”) to accommodate a significant realignment of Trail 140. Trail 140 is a multi-use trail and the NFA designation only allows low-impact foot traffic
 - An expansion of the Recreation classification around Bear Creek Lodge to allow for maximum flexibility to develop that area into the park gateway and focus area
 - Some potential expansion of Recreation classification around existing park office and former maintenance shop to allow overnight accommodation development (yurts or cabins were brought up as an example)
 - Should the new maintenance facility area be reclassified?
 - Recreation classifications were added to the trailheads in this focus area, but should not carry forward as there was a misunderstanding over what was allowed in Resource Recreation.
- For any new lands you identify for the Long-Term Boundary, assign a land use classification for future development and use.
 - All areas identified for inclusion in long-term boundary would be classified as Resource Recreation.

Trails and Trailheads

- Which trails should be designated for multiple vs. single use?
 - Some discussion on this item focused on Lower Trail 140, which functions as a downhill MTB trail, but is designated as multiple use and is the only trail in the park that currently connects Bear Creek Lodge with the summit. This trail should remain multi-use, but should undergo a significant realignment and reconstruction to facilitate multi-use and reduce downhill speeds. Complimenting this proposal, the group also landed on proposing the development of a new MTB-only, bi-directional trail closely paralleling and south of the main park road. This would take MTB pressure off of 140. All other trails in this area will remain as-is from a use standpoint.

- Trail 100 East of Trail 103 should be designated hiker only and realignment / rebuilt to create a more sustainable grade.
- What trail experiences/ability levels are missing or underrepresented?
 - Accessibility and interpretive. In both cases, the group identified developing a short interpretive loop around Bear Creek Lodge that could also be built to accessibility standards.
- What is the need for improvements/modifications?
 - See map
 - See above for Lower Trail 140
 - See above for new MTB bi-directional trail proposal
 - See above for Trail 100 (East) proposal
 - See below for new Bear Creek Lodge / Entrance Trailhead connector
- What are ways to better integrate and make connections with trails within the Basin?
 - New trail development between Bear Creek Lodge and Entrance Trailhead / Trail 110 (see map). This trail would be an easy, multi-use.
- What treatments or other considerations should be given to trails and trailheads within the gateway area? (Consider names, signage, other) –
 - Overall, the group favored trail names vs numbers, but potentially State Parks could retain the numbering system while also featuring named loops and routes on maps and on signage. These could be color-coded as well.
 - If number system went away, some historical #s should be retained
 - Difficulty level info should be included

Circulation, Parking & Use Distribution

- Where are there bottlenecks and capacity constraints and how should they be addressed?
 - Shuttle was identified as primary solution. The big bottleneck for parking is Lowe Kit Carson (“Hairpin”) Trailhead, but there’s not a lot of room for expansion. The Entrance Trailhead also has no real room to expand.
- What solutions for summer? What solutions for winter?
 - Similar – shuttle system.
- What are ways to support more parking and improve circulation? Does Bear Creek Lodge make sense for shuttle/transit node and if so what improvements are required and where should they be located?
 - Bear Creek Lodge does make sense as a location for adding parking and a shuttle/transit node. However, with a culvert under the big field parking area likely to be removed in the future, potential to expand parking is somewhat limited. Potentially, looking above Bear Creek Lodge to expand parking or

removing the garage with living unit about to create additional parking might be solutions. Also, could parking be developed on the south side of the creek?

Overnight Accommodations

- Does it make sense to expand camping within the Basin Focus Area and if so where?
 - Potentially some backcountry camp sites above and north of the current Park Office.
 - Yurts and/or cabins near Bear Creek Lodge or the current Park Office / maintenance shop (when the maintenance shop gets demolished)
 - Camp Fosseen (current inholding)
 - Bear Creek Lodge (special event and groups only)
- If camping is recommended, what is the right mix of accommodations and where should these be located? e.g. Tent, RV, walk-in hiker/biker, cabins, yurts
 - Discussion of adding cabins and yurts.
- Should we consider developing a backcountry (primitive) overnight experience?
 - Yes

Snowmobiling

- What do you see as the future for snowmobiling considering the options above?
 - Ok as-is. No expansion. More enforcement needed. Do not make any significant investments in snowmobile-related facilities due to climate change impacts and minimal trail system.
- Are there any specific snowmobile considerations to be addressed in this area?
 - No (see above)

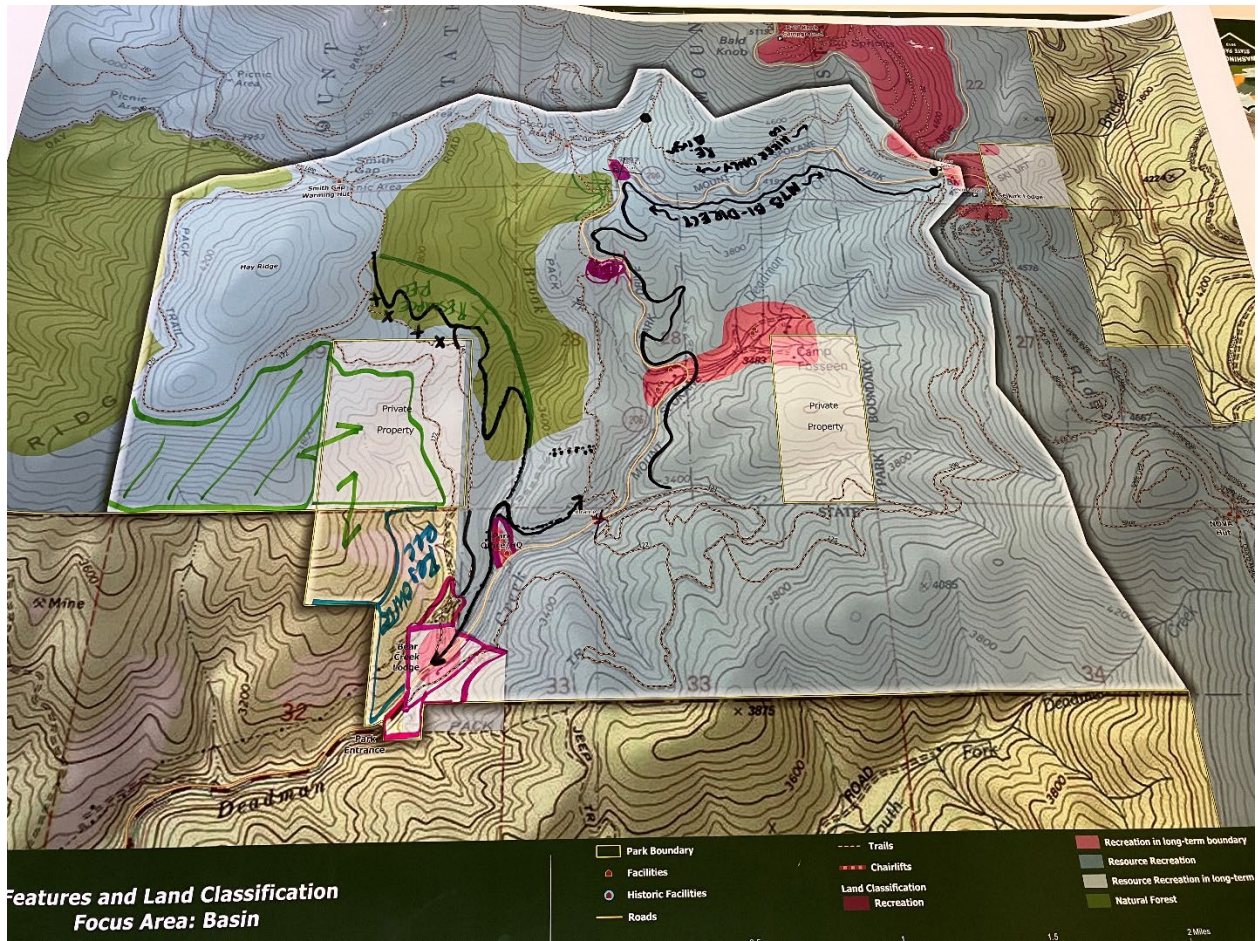
Tubing/sledding

- Is tubing/sledding a good activity to bring back to the park?
 - Yes. It's an iconic use of the park
 - Include sledding and tubing
 - Make sure that its safe
- If so, what amenities, services, and /or improvements should be provided to facilitate this use?
 - Tow rope
 - Other improvements associated with Bear Creek Lodge (see above)

Other

- What else should be considered in the Basin Focus Area? Consider management issues, recreation opportunities, etc.

- Forest management was discussed. Two foresters in this group. This portion of the park should be a significant priority for State Parks to address forest management and fuels reduction. Being in the southwest part of the park with south facing slopes, this area is susceptible to fires, especially considering prevailing winds out of the SW. This effort should be combined with an education program to ensure that park visitors understand what State Parks is doing and why when it comes to forest management.



LARGE GROUP COMMENTS

Summit Focus Area

- Consider more thoroughly what are the implications of restricting private vehicles on the Summit Road
 - Where would parking and shuttle service be located
 - How would it impact other areas of the park/other users
- Regarding a “Round the Mtn Trail,” in 2014, the Washington Parks and Recreation Commission was not supportive of this idea in order to preserve the area for wildlife. They didn’t want to open up the PASEA to any other recreational uses other than alpine/backcountry tree skiing and emergency rescue. If a Round the Mtn trail is now something to be considered, it will require action by the Commission.
- Sunsets are a draw – consider for shuttle service
- Uphill skiing is very popular; are there other opportunities to support?

Basin Focus Area

- Consider public transit when looking at alternate modes of transportation
- Are there specific priority areas for fuel reduction around Day Ridge/Road?
- Change the name of Bear Creek Lodge. There is no Bear Creek within a hundred miles of the park and the name could be a reason some avoid the park due to fear of bears. Suggest reflecting its history by calling it Linder Lodge, as in Linder Ridge.

Bald Knob

- Consider hydrology in thinking about any new development, in addition to other natural resources
- Improve Day Road for west side access – there are mixed thoughts about how much and what should be developed here:
 - Provide more facilities, developed trailhead, staff accordingly and address illegal access
 - Other than creating 2 or 3 more parking spots, caution against development/expansion here because it is too time consuming for staff to reach this area for regular maintenance, Discover Pass enforcement and for urgent needs like vandalism or violence.
- Large (special) events take up parking areas for other visitors – ways to address?

Quartz

- Selkirk Lodge expansion plans in the past included parking area expansion and equestrian parking/camping area; re-look at these in coming up with solutions
- Apply balance between summer/winter when considering improvements and expansions
- Look for opportunities to provide overnight outdoor education opportunity for youth – consider shuttle, Tripps Mtn Warming Hut, Bear Creek Lodge, Camp Fosseen
- Partner with schools to provide day camp opportunities
- Consider Selkirk Lodge for family use
- Bear Creek Lodge as overnight environmental learning center (ELC) – on the other hand, very difficult to sustain viable operation based on similar concepts tried in other areas
- Tread lightly with idea to move trail to Ragged Ridge “down” from more fragile areas; there are lots of educational opportunities along the way – rare plants, great views, favorite 4-season trail for some users, having presence of people minimizes illegal activities

Other

- Request has been made from family of B29 airplane crash for memorial sign; Lara Gricar is working with them to consider this request
- When considering a shuttle, it will mean less revenue for state parks, which won't help support additional staffing and other budget needs of this area
- Utilize Selkirk and trails network for expanding MTB options, to bring down to Bear Creek Lodge
- Establish second access for emergencies
- Bring back the sunball 😊

Additional Comments from Participants After the Workshop

- Seek suitable sites outside current park boundary for satellite camping options, for large RVs and other campers, providing a base for camping to access internal park recreation opportunities; hike from satellite sites into park and/or consider towable car, bicycle, shuttle. Suggestions include entry road before Bear Creek Lodge, down toward Hwy 206 and Forker Rd
- Hang gliding and paragliding. The local group would like to propose a trial use period in 2025, when the summit road is open, to launch to the south of the communication towers in S to SW directions and land outside of the park boundaries on private land.

- Recommendations for beginner trails, camping improvements or interpretive experience should consider the needs of non-ambulatory or non-sighted people
- Not all trails need to be developed for strict ADA/ABA compliance. Consider the occasional trail designed for universal use without being ADA compliant
 - Signage, both informative and interpretive, should be compatible with assistive technology, or use QR codes. All signage should be at height for all users, accommodating for diverse user groups.
 - Attention to surface, grade and concrete interface at entrances to toilets or buildings
- Re: Skijoring: Expanding skijoring use is a controversial topic. Spreading out the activity to other trails would be positive so dog/dog/people conflicts can be reduced. However, dogs can be cause of other trail issues: Most skijoring people do not have dogs trained for the sport; aggressive dogs fighting other dogs; dogs crossing the ski track to mingle with other dogs and/or makeshift harness and ropes blocking trails; not picking up dog waste; skate skiing is fast downhill and can be dangerous if dogs run out unexpectedly. Suggest Ski Patrol enforce rules; consider required certification for users showing their dogs have gone through a training clinic for skijoring.

Attachments – Focus Area Assignments