

WASHINGTON STATE PARKS & RECREATION COMMISSION



APPROVED FOR CONSTRUCTION

[Signature] 16 Dec 2025
 REGION MANAGER
 Kyle Murphy 12/17/2025 *date*
 CAPITAL PROGRAM MANAGER *date*

LAURIE CONNELLY, CHAIR

SOPHIA DANENBERG

HOLLY WILLIAMS

ALI RAAD

MICHAEL LATIMER

SCOTT MERRIMAN

ALFIE ALVARADO-RAMOS

DIANA DUPUIS, DIRECTOR

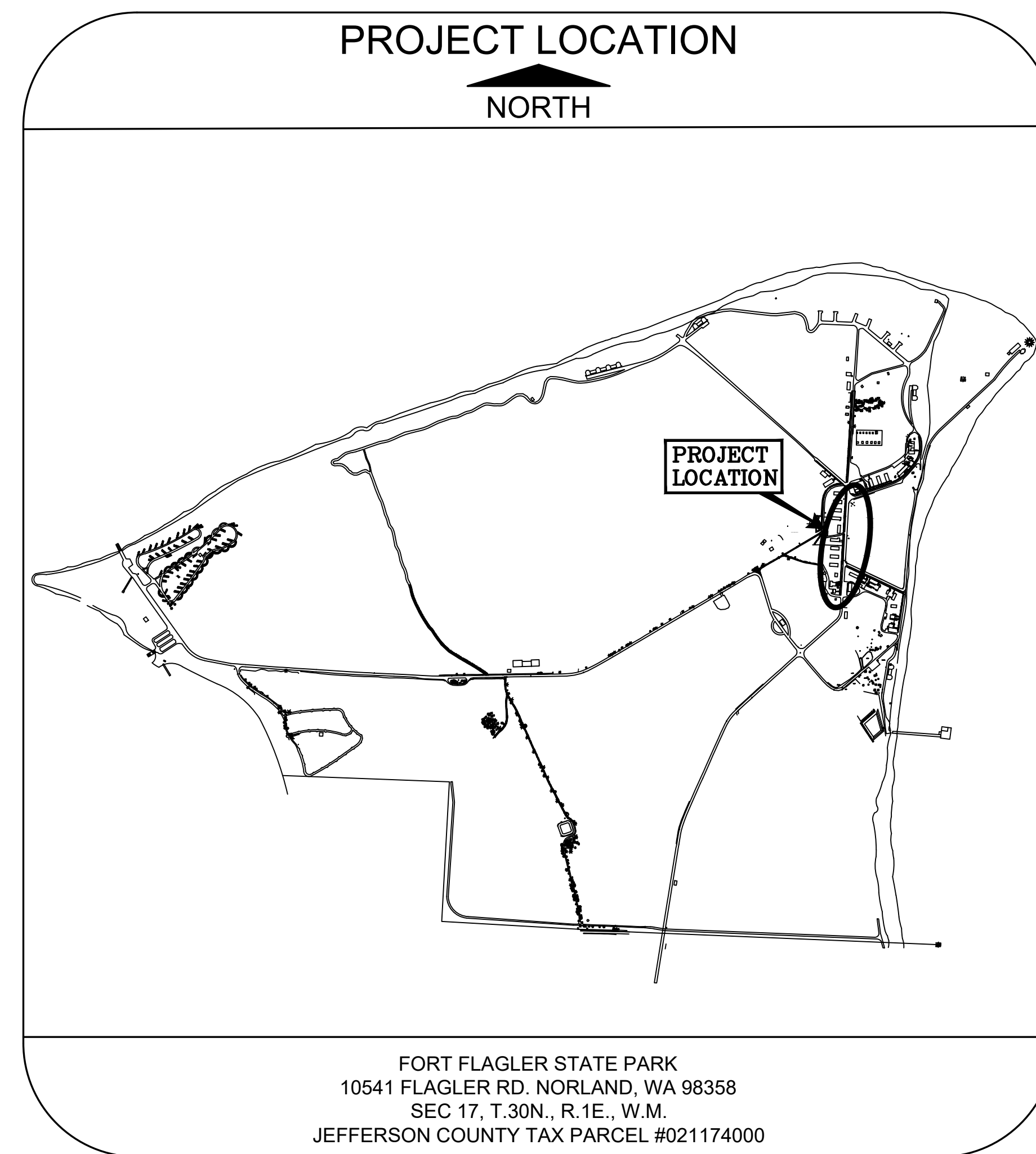
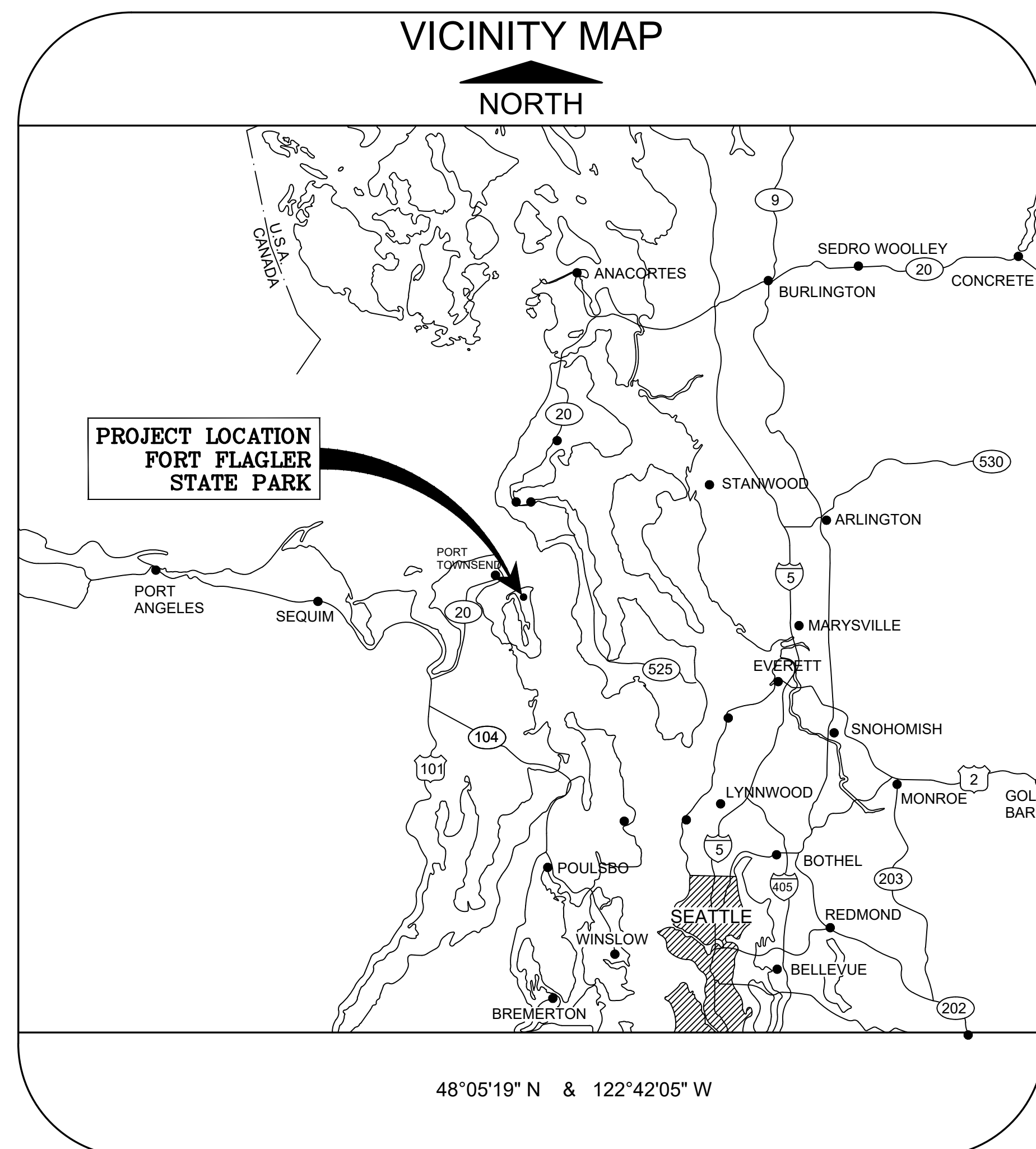
AREA MANAGER: BRIAN HAGEMAN

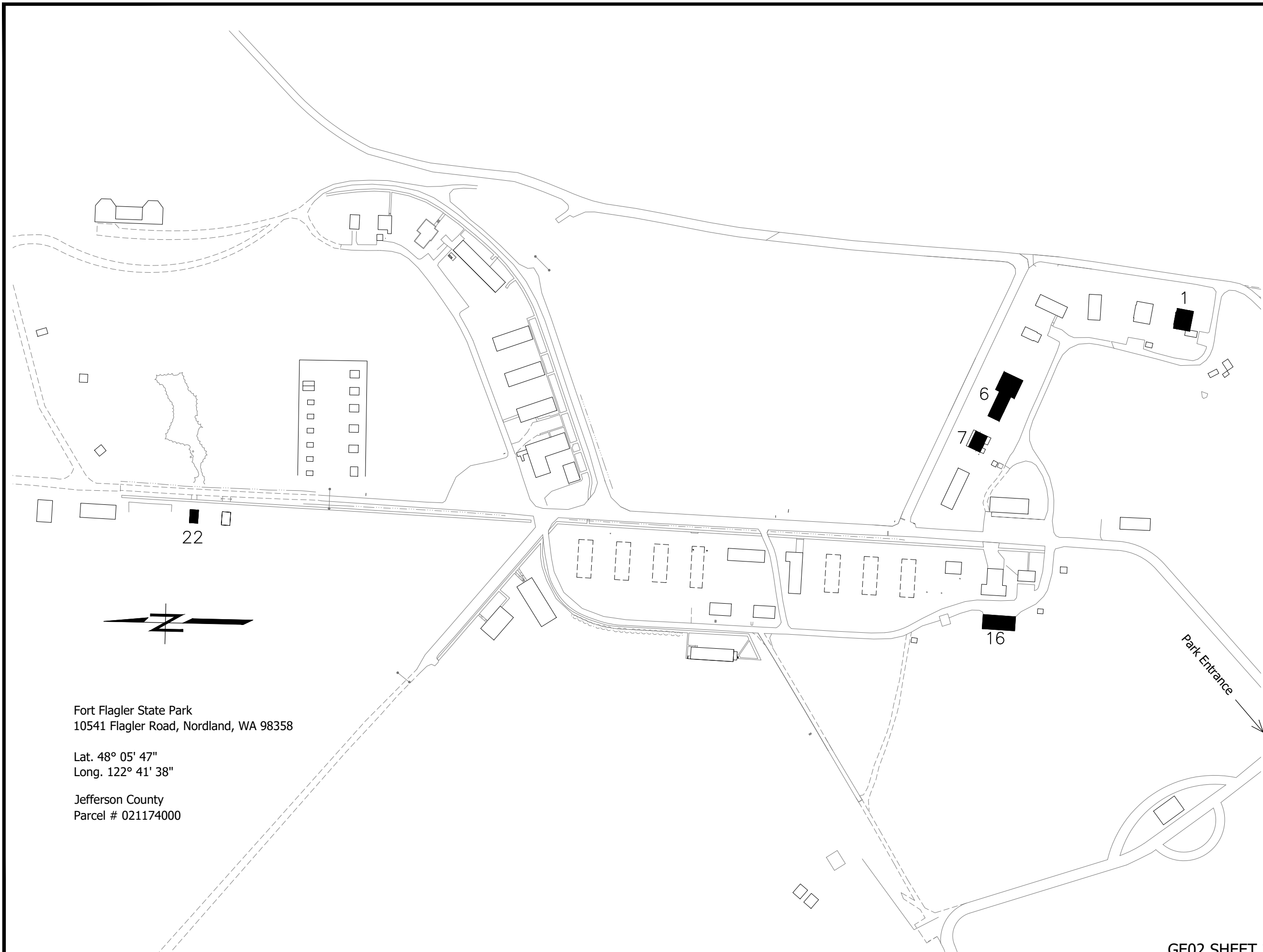
FORT FLAGLER STATE PARK

WW1 HISTORIC FACILITIES PRESERVATION – BUILDINGS 1,6,7&16



INDEX

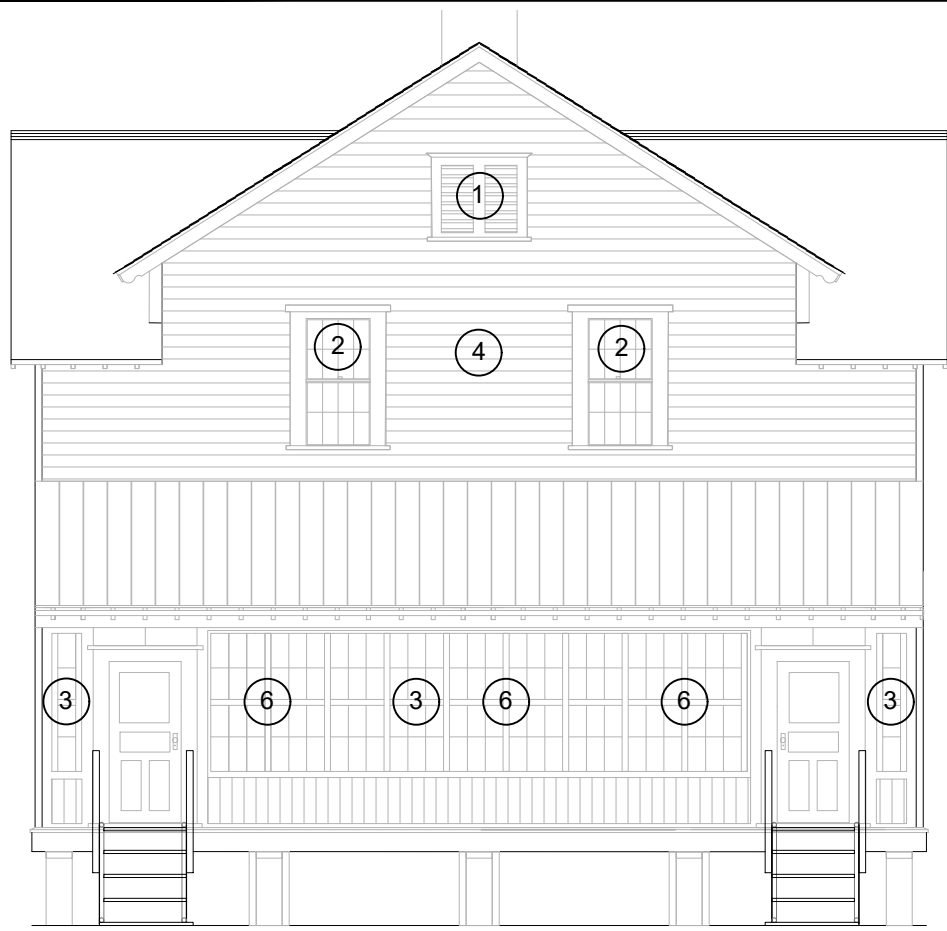
SHEET	DESCRIPTION
GENERAL (GE)	
1	COVER SHEET
2	SITE PLAN
3	BUILDING 1
4	BUILDING 6
5	BUILDING 7
6	BUILDING 16
7	DETAILS





Fort Flagler State Park
 10541 Flagler Road, Nordland, WA 98358
 Lat. 48° 05' 47"
 Long. 122° 41' 38"
 Jefferson County
 Parcel # 021174000

CAD NO.		
	APP.	DATE
	INT.	
REVISIONS		
		NO.
ACTION	BY	DATE
DESIGNED		
DRAWN		
CHECKED (FIELD)		
CHECKED (HDQTS.)		
 REGISTERED STAMP		
WASHINGTON STATE PARKS AND RECREATION COMMISSION 		
FORT FLAGLER STATE PARK WWI HISTORIC FACILITIES PRESERVATION SITE PLAN		
SCALE		
NOT TO SCALE		
PARKS FILE#		



EAST ELEVATION



WEST ELEVATION



NORTH ELEVATION



SOUTH ELEVATION

1. REMOVE WINDOWS, PROVIDE COMPLETE NEW WINDOW UNITS TO MATCH EXISTING.
2. REMOVE ALL WINDOW SASHES FROM WINDOW FRAMES, RETAIN/REUSE INTERIOR STOPS, DISCARD AND PROVIDE PARTING BEAD, STRIP JAMB AND SILL, REGLAZE, RETAIN EXISTING GLASS, PROVIDE SPRING BRONZE. WEATHER STRIPPING, SASH CORD AND PAINT ALL SURFACES. BASEMENT AND ATTIC WINDOWS NOT INCLUDED. PROVIDE WEATHER PROOF TEMPORARY ENCLOSURES.
3. REMOVE EXISTING WINDOW WALL. REBUILD WINDOW WALL INCLUDING NEW STUDS, SHEATHING, FLASHING, WOOD WINDOWS AND STORMS TO MATCH EXISTING. SEE WINDOW SECTIONS SHEETS 8 & 9
4. REMOVE SIDING, PROVIDE BUILDING PAPER AND SIDING, STRIP WINDOW TRIM, CORNER BOARDS, PAINT ALL SURFACES..
5. PREP AND PAINT EXISTING SIDING.
6. REPLACE 4 X 4 POST.
7. PROVIDE WINDOW SILLS TO MATCH EXISTING.

NOTE:
THIS BUILDING HAS STORM WINDOWS ON ALL FRONT AND TWO SIDE WALLS. REMOVE AND RE-INSTALL.

CAD NO.		DATE
		APP.
		INT.
		NO.
		REVISIONS

ACTION	BY	DATE
DESIGNED		
DRAWN		
CHECKED (FIELD)		
CHECKED (HDQTS.)		



WASHINGTON
STATE
PARKS
AND
RECREATION
COMMISSION

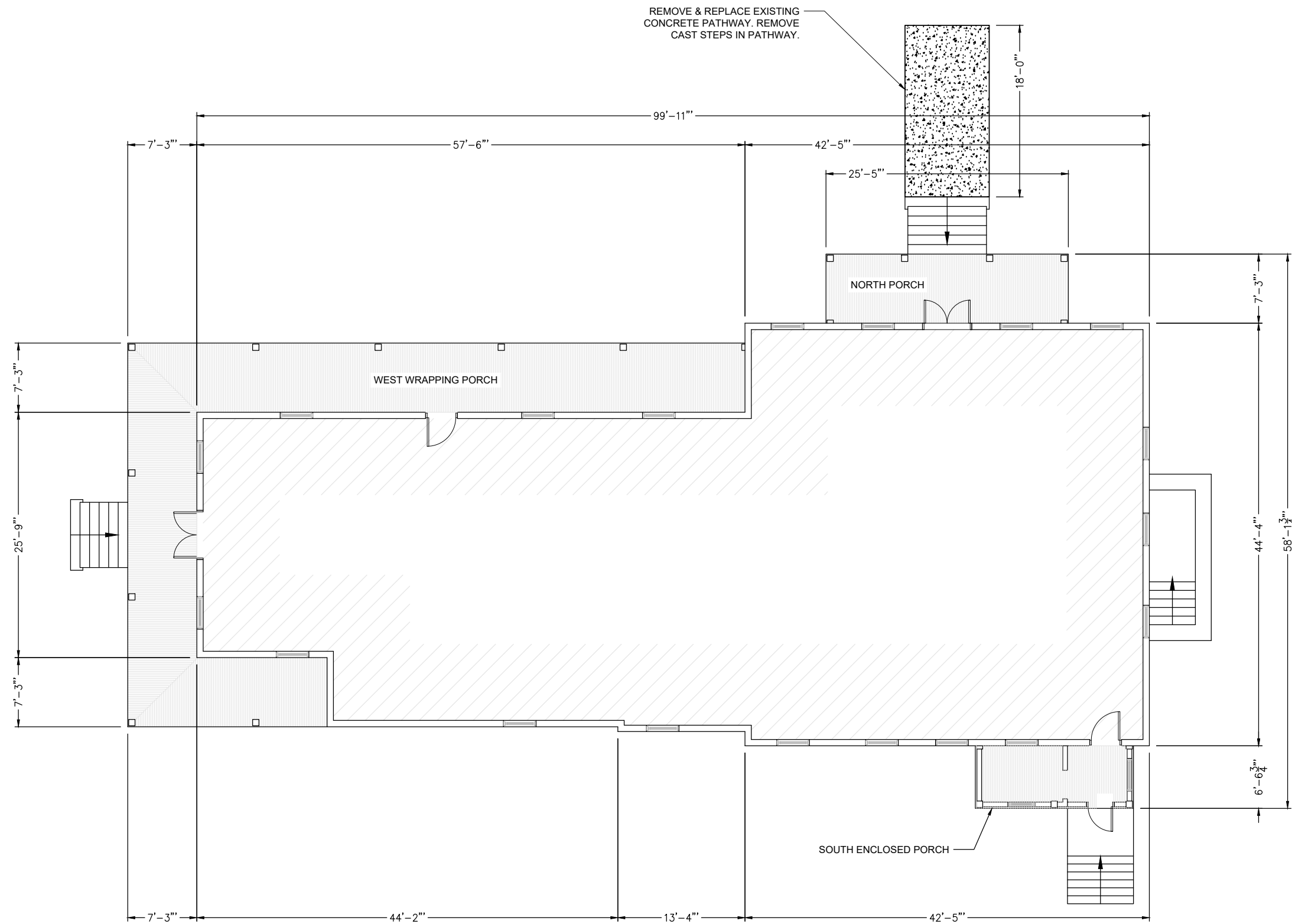


FORT FLAGLER
STATE PARK

WWI HISTORIC
FACILITIES
PRESERVATION

BUILDING 1
ELEVATIONS

SCALE
NOT TO SCALE



EXISTING FIRST FLOOR PLAN

CAD NO.	
	DATE
	APP.
	INT.
	REVISIONS
	NO.

ACTION	BY	DATE
DESIGNED		
DRAWN		
CHECKED (FIELD)		
CHECKED (HDQTS.)		



WASHINGTON
STATE
PARKS
AND
RECREATION
COMMISSION



FORT FLAGLER
STATE PARK

WWI HISTORIC
FACILITIES
PRESERVATION

BUILDING 6 FLOOR
PLANS

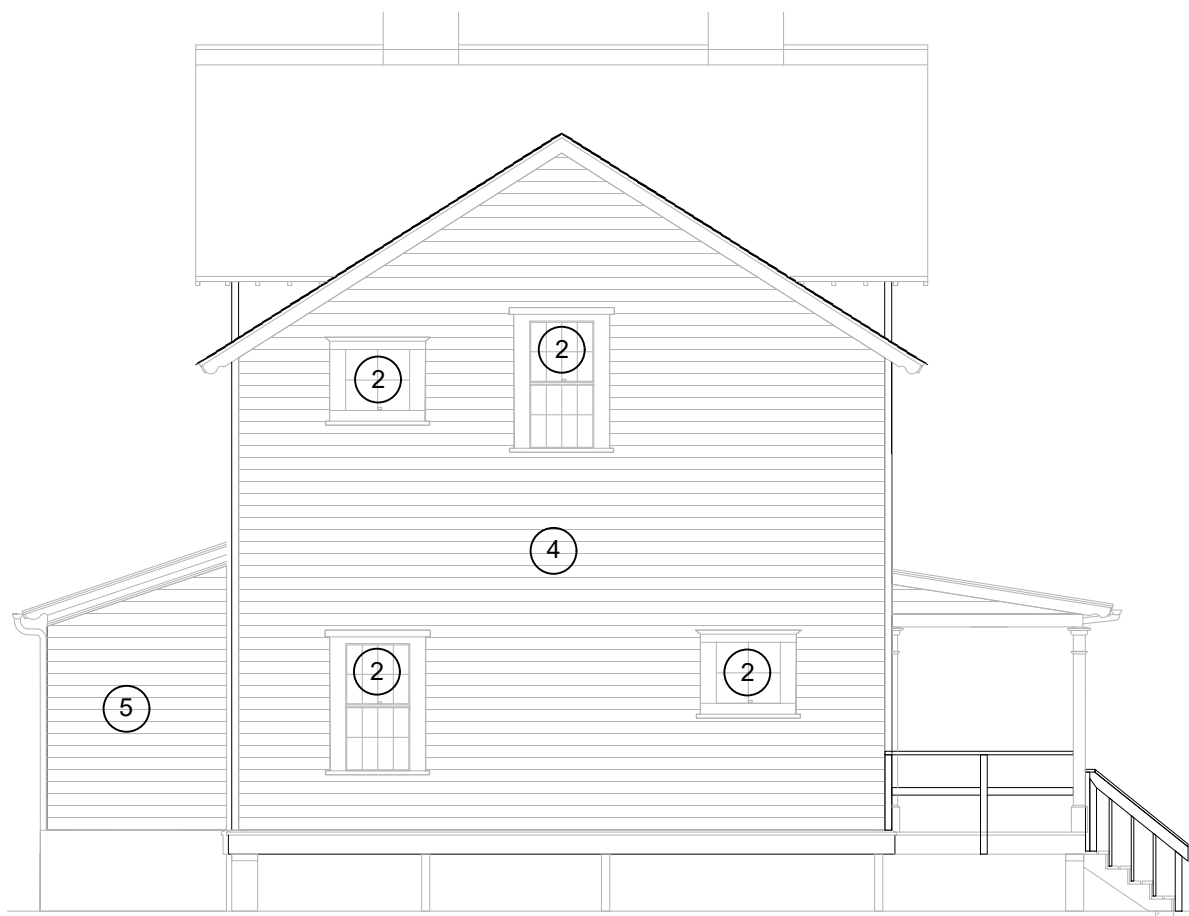
SCALE
NOT TO SCALE



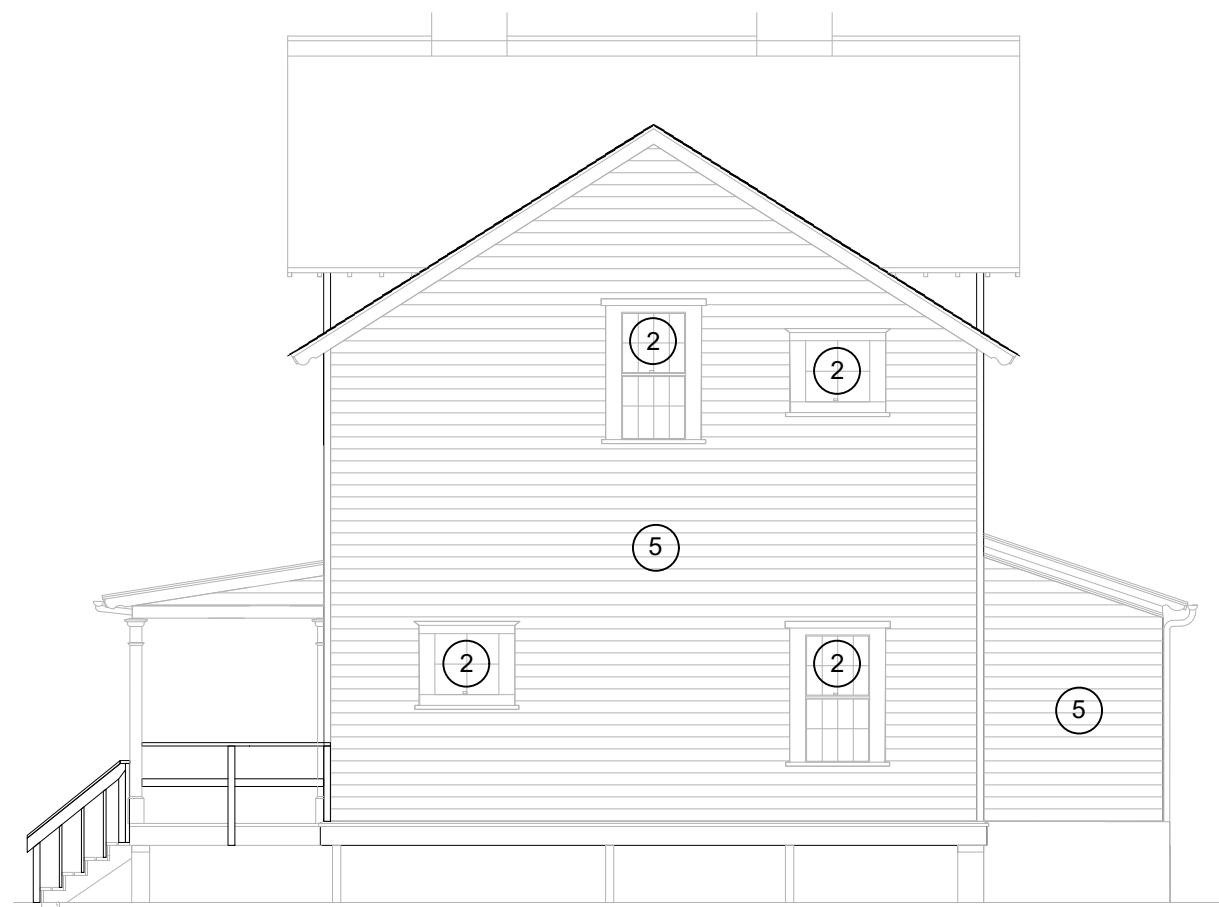
NORTH ELEVATION



SOUTH ELEVATION



EAST ELEVATION



WEST ELEVATION

1. NOT USED THIS SHEET
2. REMOVE ALL WINDOW SASHES FROM WINDOW FRAMES. RETAIN/REUSE INTERIOR STOPS, DISCARD AND PROVIDE PARTING BEAD, STRIP FRAME, SILL AND WINDOW TRIM. RETAIN AND REUSE EXISTING GLASS. PROVIDE WEATHER STRIPPING AND SASH CORD. PROVIDE WEATHER PROOF TEMPORARY CLOSURES
3. NOT USED THIS SHEET
4. REMOVE SIDING. PROVIDE BUILDING PAPER AND SIDING. STRIP CORNER BOARDS.
5. PREP AND PAINT BUILDING EXTERIOR

CAD NO.		DATE
		APP.
		INT.
		NO.
		REVISIONS

ACTION	BY	DATE
DESIGNED		
DRAWN		
CHECKED (FIELD)		
CHECKED (HDQTS.)		



WASHINGTON
STATE
PARKS
AND
RECREATION
COMMISSION



FORT FLAGLER
STATE PARK

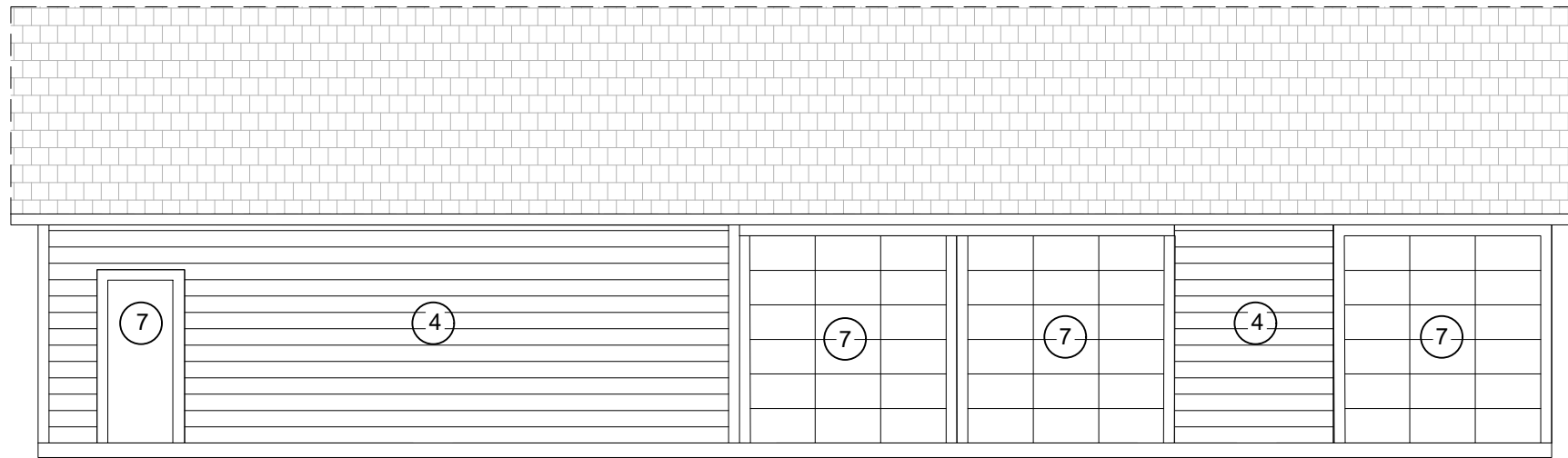
WWI HISTORIC
FACILITIES
PRESERVATION

BUILDING 7
ELEVATIONS

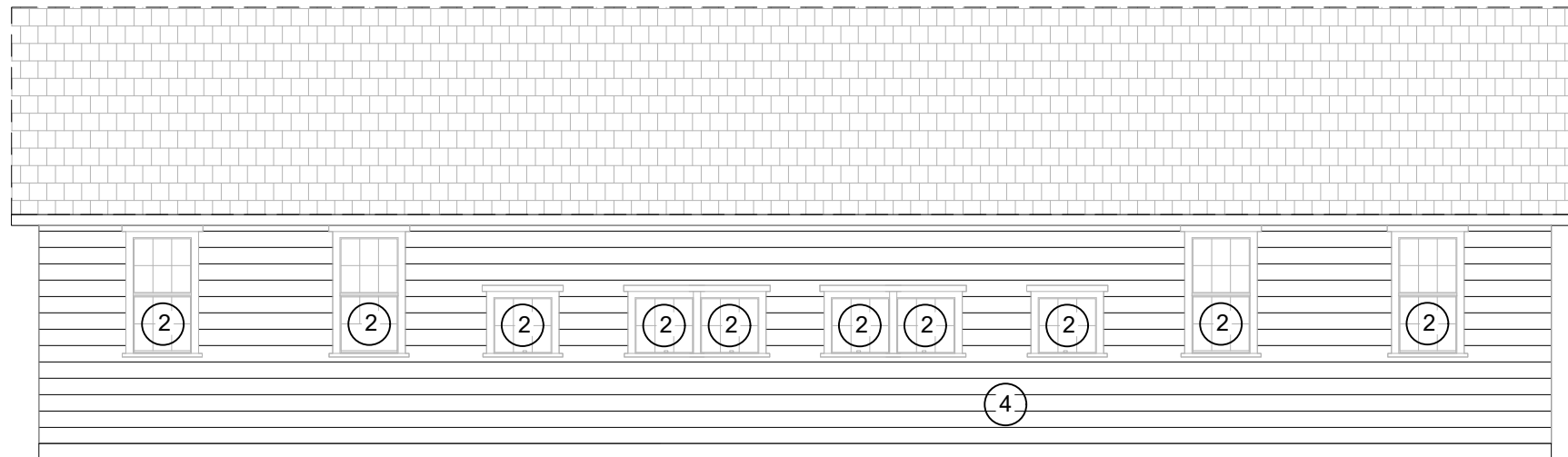
SCALE
NOT TO SCALE

GE05 SHEET 5

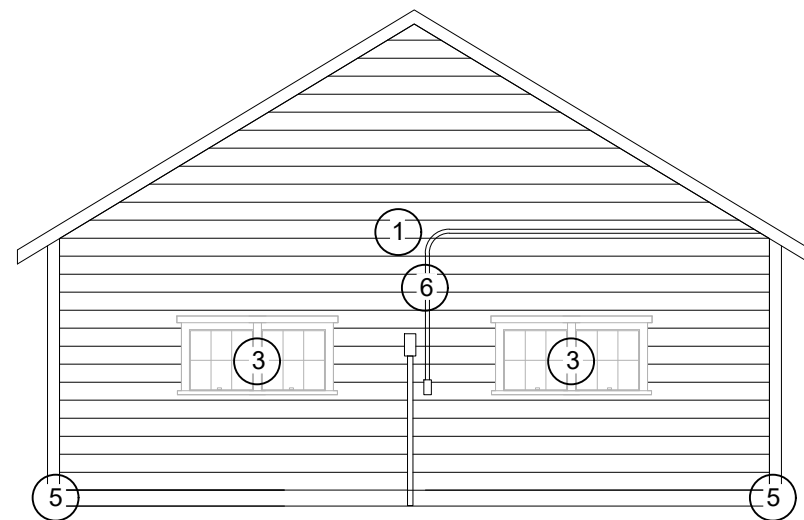
PARKS FILE#



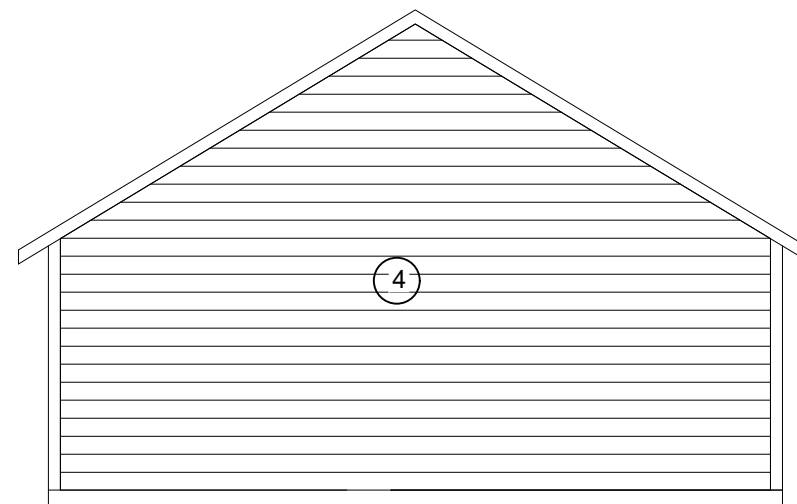
EAST ELEVATION



WEST ELEVATION



SOUTH ELEVATION



NORTH ELEVATION

1. PROVIDE 450 SF 1 X 6 DROP SIDING TO MATCH EXISTING. MINIMUM 8' LENGTHS. PROVIDE 1 X 6 WINDOW TRIM AND AND CORNER BOARDS. PRIME BOTH SIDES AND ENDS OF SIDING PRIOR TO INSTALLATION.
2. REMOVE ALL WINDOW SASH FROM WINDOW FRAMES. RETAIN/REUSE INTERIOR STOPS, PROVIDE PARTING BEAD. STRIP JAMB, SILL AND TRIM. REGLAZE USING EXISTING GLASS. PROVIDE SPRING BRONZE AND WEATHER STRIPPING. PAINT ALL SURFACES. PROVIDE WEATHER PROOF TEMPORARY ENCLOSURE.
3. REMOVE WINDOWS DISASSEMBLE AND REPAIR (WORK WILL INCLUDE CONSOLIDATION, PARTIAL REPLACEMENT, STRIPPING AND NEW GLAZING.) THESE WINDOWS TO BE RESTORED AS FIXED WINDOWS.
4. RE-NAIL SIDING. PREP EXISTING SIDING INCLUDING EAVES, RAFTER TAILS, CORNER BOARDS, ETC. FOR REPAINTING. PAINT ENTIRE EXTERIOR OF BUILDING.
5. PROVIDE 1 X 6 CORNER BOARD.
6. PLACE ELECTRICAL CONDUITS INSIDE WALL.
7. PREP AND PAINT DOOR AND TRIM.

CAD NO.

	DATE
INT.	
APP.	
NO.	

ACTION	BY	DATE
DESIGNED		
DRAWN		
CHECKED (FIELD)		
CHECKED (HDQTS.)		



WASHINGTON
STATE
PARKS
AND
RECREATION
COMMISSION



FORT FLAGLER
STATE PARK

WWI HISTORIC
FACILITIES
PRESERVATION

BUILDING 16
ELEVATIONS

SCALE
NOT TO SCALE

GE06 SHEET 6

PARKS FILE#

CAD NO.

DATE

APP.

INT.

REVISIONS

NO.

ACTION	BY	DATE
DESIGNED		
DRAWN		
CHECKED (FIELD)		
CHECKED (HDQTS.)		



WASHINGTON STATE PARKS AND RECREATION COMMISSION



FORT FLAGLER STATE PARK

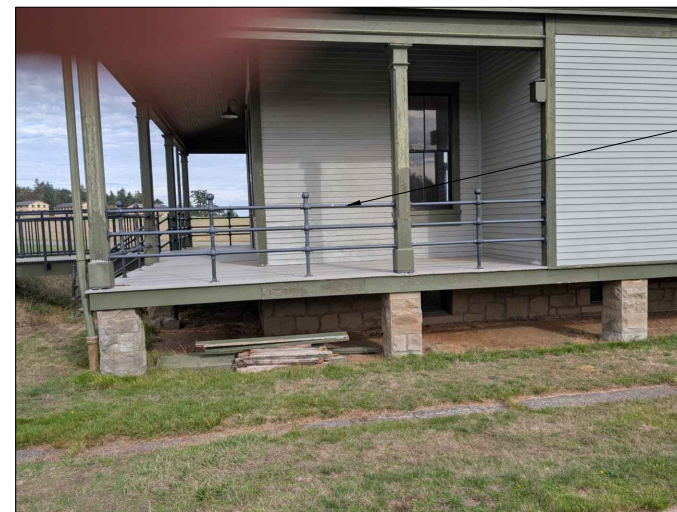
WWI HISTORIC FACILITIES PRESERVATION

DETAILS

SCALE

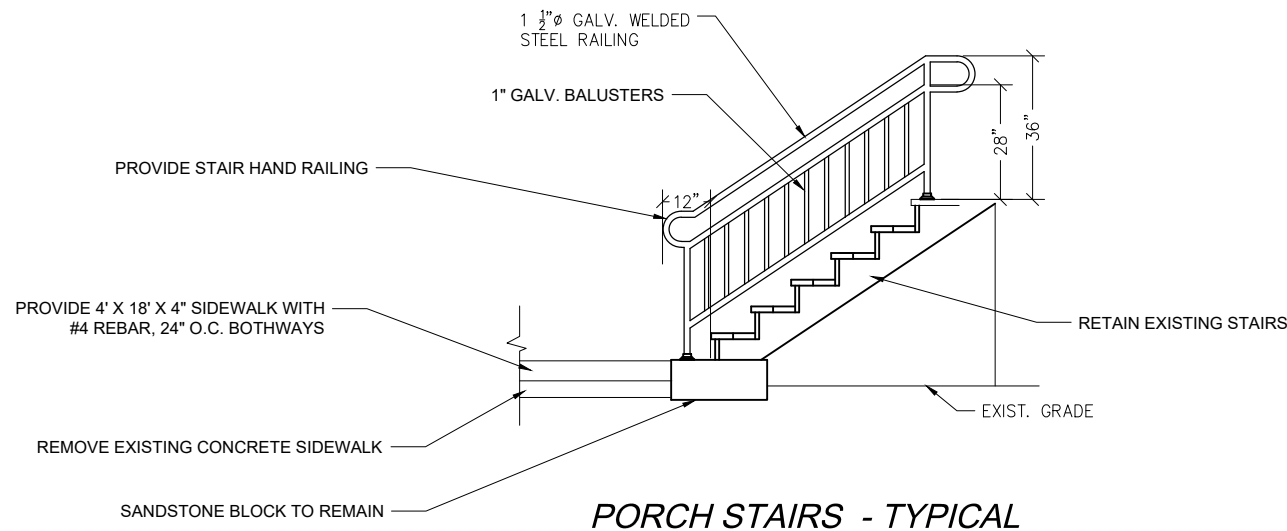
NONE

PARKS FILE#

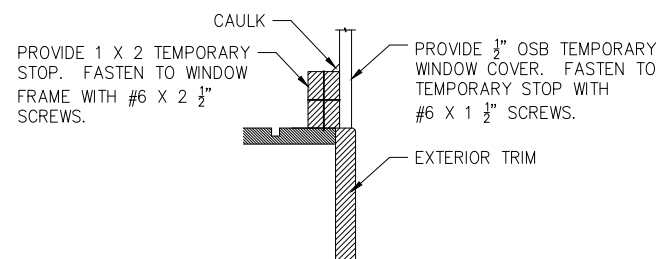
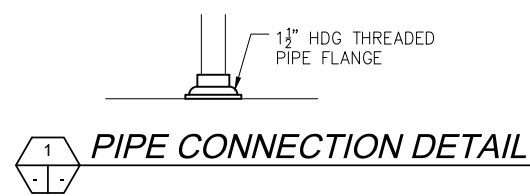


PROVIDE THREE RAIL GUARD RAIL TYPICAL 9 LOCATIONS. USE OWNER FURNISHED FINIALS, CROSSES AND TEES. PROVIDE FLANGES, RAILS AND POSTS.

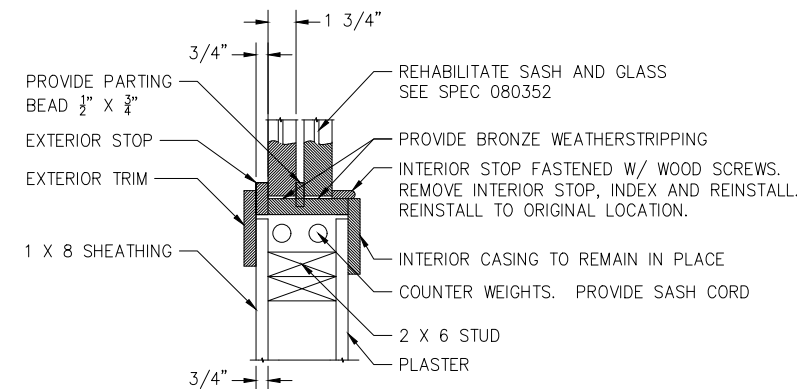
BLDG 6 PORCH RAIL - TYPICAL



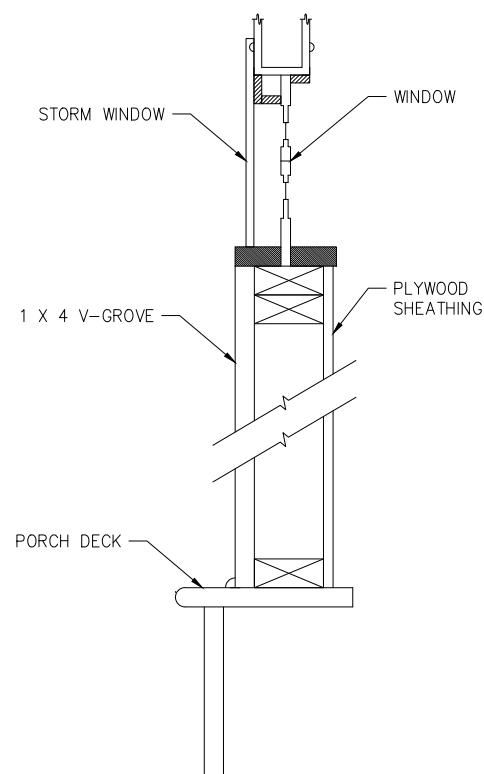
PORCH STAIRS - TYPICAL



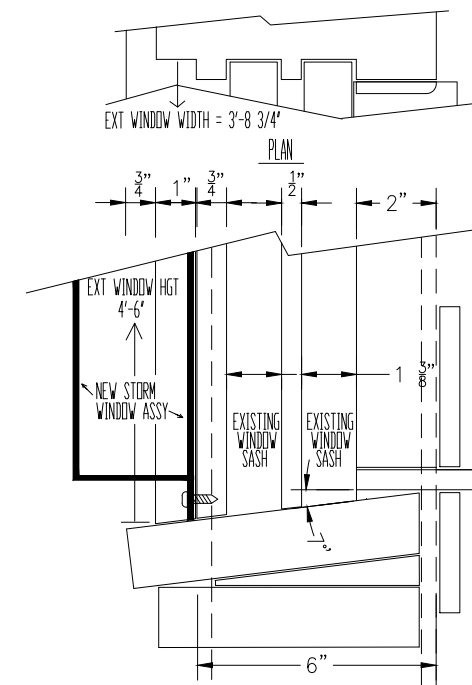
TEMPORARY WINDOW COVER



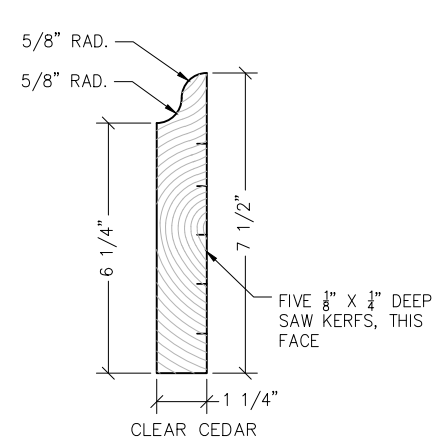
DOUBLE HUNG WINDOW



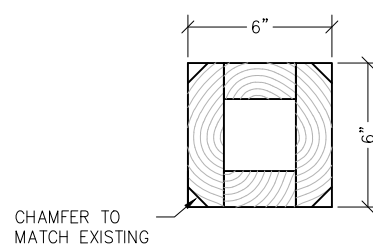
ENCLOSE PORCH SECTION - TYP.



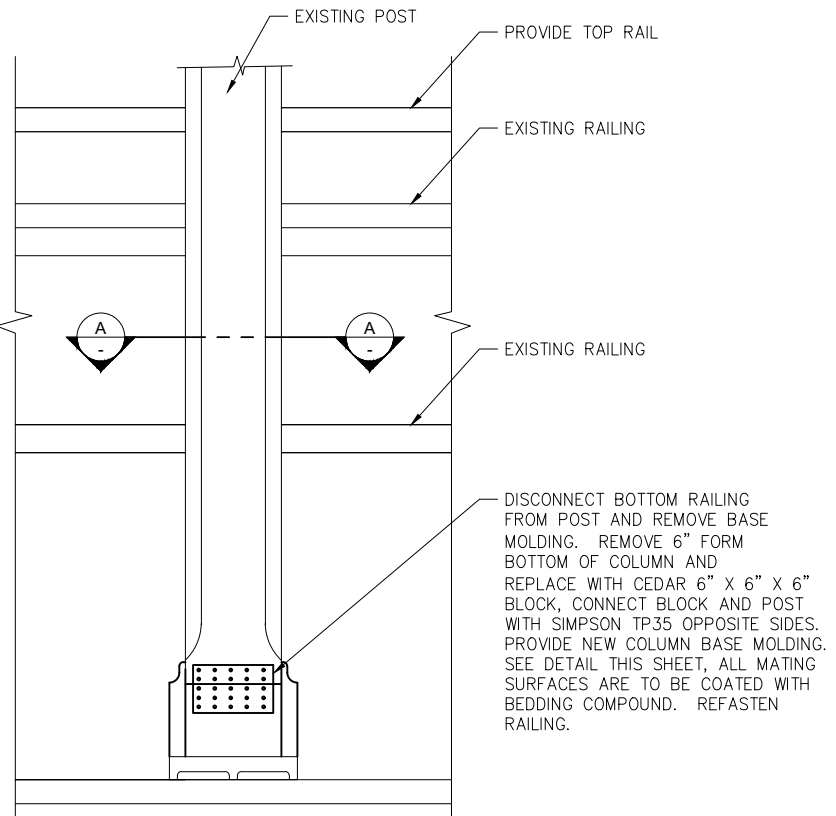
WINDOW FRAME DETAIL - TYP.



COLUMN BASE MOLDING



SECTION 'A-A'



COLUMN BASE REPAIR DETAIL - TYPICAL