

GROUP TOURS AND PROGRAMS

WASHINGTON STATE PARKS

The following programs have been developed to provide group educational opportunities at State Parks in the Olympic View Area. Group programs need to have a minimum of 8 people and may only select one program per visit. Programs may be requested via the [online form](#).

Please give at least two weeks' notice for scheduling. Group programs may not be available during the summer months due to increased public programming.



Programs for School Groups

Are You As Smart As An Animal?

In this interactive program, participants will learn that animals are smart in their own way. We will explore the different skills that animals use to survive.

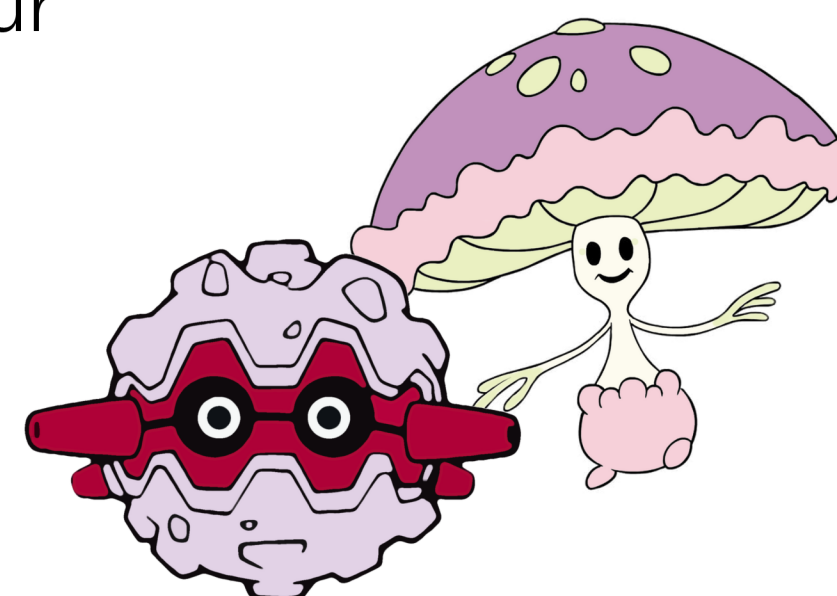
- Grade Levels: 1st grade
- Time: 1 hour
- Max group size: 30



Pokémon in Real Life!

What real life versions of Pokémon characters can you discover in our parks and do their special abilities have practical applications?

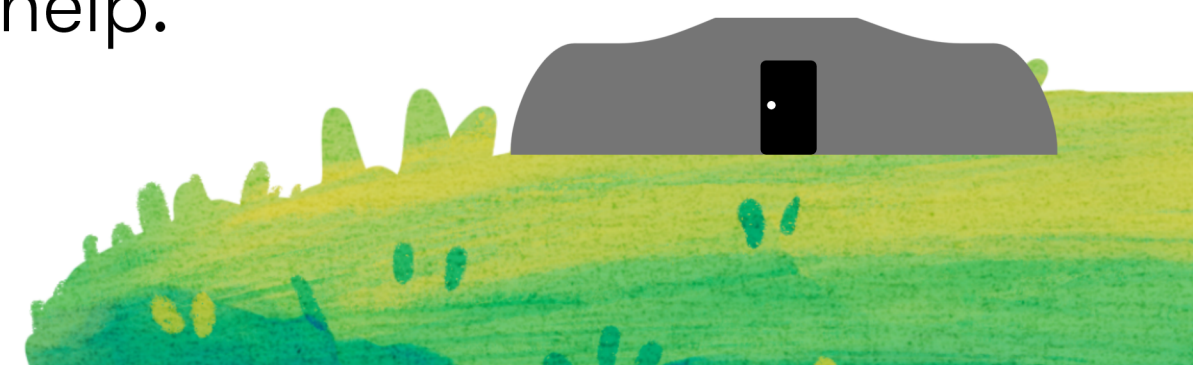
- [Fort Worden or Fort Flagler](#)
- Grade Levels: 2nd-5th
- Time: 1 hour
- Max group size: 30



Jr. Preservationists

Learn how we protect historic structures and how you can help.

- [Fort Worden or Fort Flagler](#)
- Grade Levels: 2nd-5th
- Time: 1 hour
- Max group size: 30



Meet a Tree

Experience what it is like to be a tree. Interactive activities will help participants become more aware and understanding of plant life.

- Fort Townsend and Anderson Lake
- Grade Levels: 3rd-5th
- Time: 1 ½ hours
- Max group size: 30



Fort Flagler Low-Tide Explorers

Explore tidepools and design your own intertidal creature!

- Grade Levels: 3rd-5th
- Time: 1 hour (dependent on low tides)
- Max group size: 30



Explore the Batteries Through Time

In this combination of history and science, participants will learn about the purpose of the fort as well as how weathering has affected the fort over time.

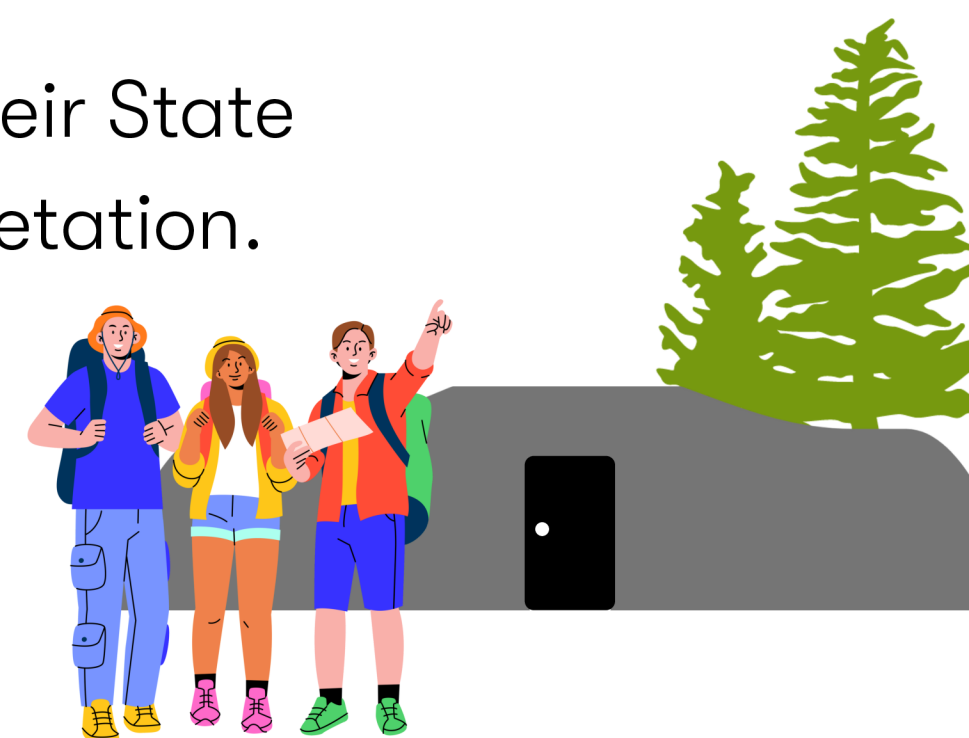
- Fort Worden or Fort Flagler
- Grade Levels: 6th-8th
- Time: 2 hours
- Max group size: 30



Student-led Hikes

This program encourages students to learn about resources in their State Parks and gives them the opportunity to try their hand at interpretation.

- Fort Worden or Fort Flagler
- Grade Levels: 8th-12th
- Time: 2 hours
- Max group size: 30



Programs for Families, Clubs, or Other Groups

Trees: Weavers of the Forest

Join us for a stroll as we explore the intricate web of life created by trees in the forest, and discover the forest in a whole new way!

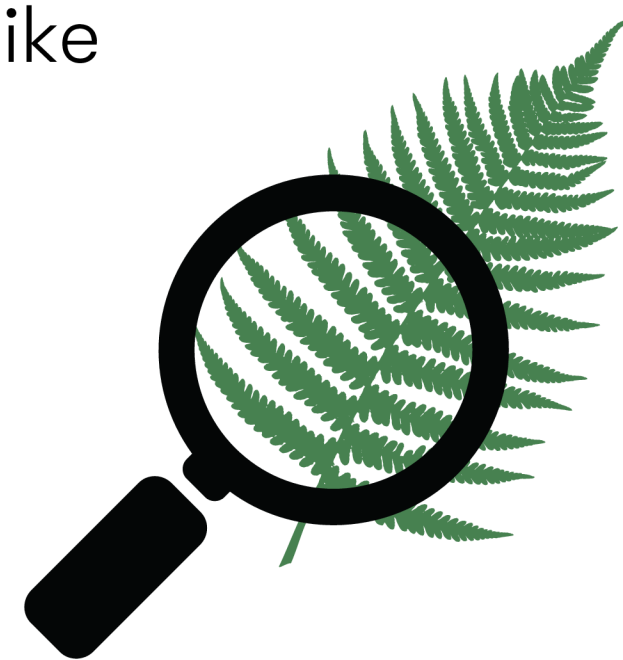
- Ages: 8 years and older
- Time: 1 ½ hours, distance varies by location
- Max group size: 15



Nature Detectives

This interactive hike is perfect for scout groups. Learn how to think like an animal and look for signs of wildlife in the forest.

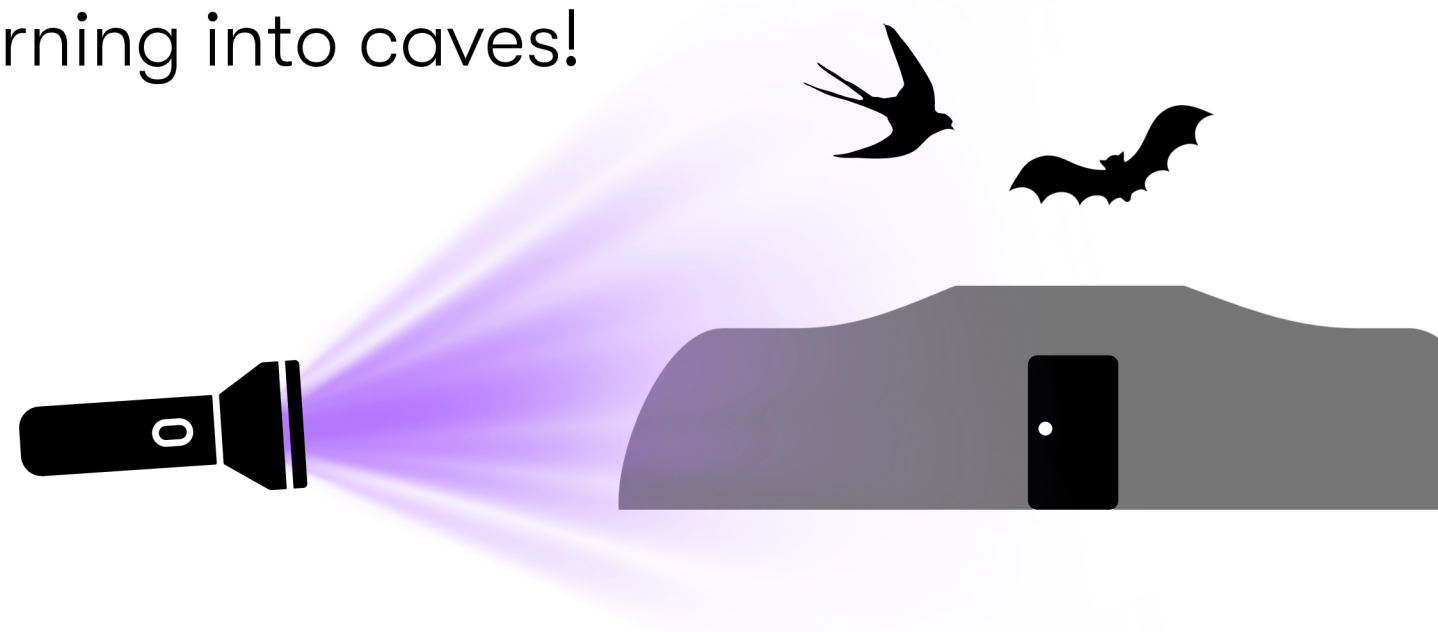
- Ages: 5- 12 years old
- Time: 1 ½ hours
- Max group size: 20
- Distance: varies depending on location



View the Batteries in a New Light

Have you explored the batteries at Fort Flagler? If so, you haven't seen them quite like this before! Learn how the batteries are turning into caves!

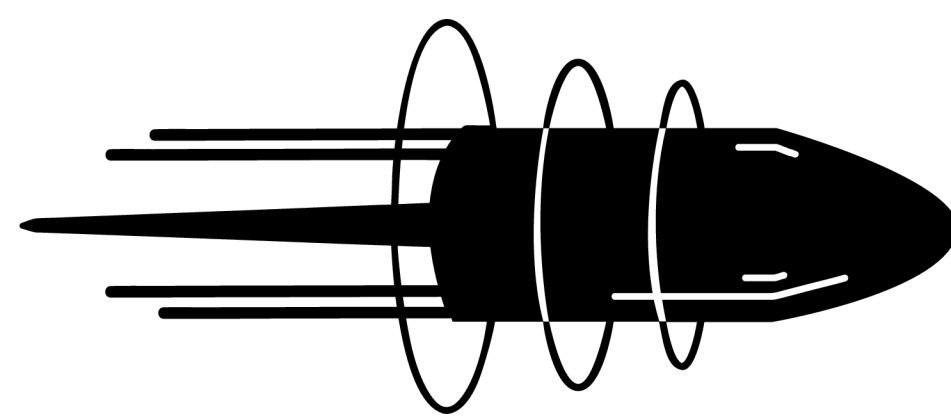
- Fort Flagler
- Ages: 8 years and older
- Time: 1 hour
- Max group size: 15
- Distance: less than a mile



Artillery Hill Tour

What was the fort protecting? What was it like to man the gunline? Learn all this and more during a walking tour through the main gunline on Artillery Hill.

- Fort Worden
- Ages: 8 years and older
- Time: 1 hour
- Max group size: 30
- Distance: less than a mile



Fort Experience for Active-Duty Soldiers

Learn how the Coast Artillery Corps evolved into a new arm of the service under the U.S. Army at the turn of the 20th century. Explore historic gun emplacements and visit our partners at the Coast Artillery Museum.

- Fort Worden or Fort Flagler
- Options: self-guided tours of the park and/or museums
- Time: varies
- Max group size: 150

*Note: groups this large will need to break into smaller groups to visit museums.



Jr. Ranger Programs

Being a Jr. Ranger means that you vow to play, learn, and protect Washington State Parks. These programs explore a variety of topics in an effort to connect participants to the park’s resources while having fun! To earn an official badge, participants must complete the self-guided booklet. Groups may stop by the park office prior to the program to get booklets or they can be handed out at the end of the program. (If booklets are completed before the program, participants can be awarded badges after the program.) Please note that Jr. Ranger Programs are offered to the public every June-August but may be requested for groups during remainder of the year.

- Fort Worden or Fort Flagler
- Ages 4-12 years old (schools may also request a Jr. Ranger Program)
- Time: 30-45 minutes
- Max group size: 30

Program Names

*Specify which program you are interested in on the request form.

How Do Birds Get Their Names?
Explore bird names to understand their characteristics and physical traits, then utilize this knowledge to create a unique bird design.

Bird Beaks and Feet
Can you guess a bird’s behavior and diet just by looking at their beaks and feet?

The Bird Migration Game
Explore the incredible efforts birds make to survive through play!

Eyes to the Side, Likes to Hide
Examining an animal's skull can unveil its story of survival.

Don’t Run: Wildlife Safety
The more we know about predators, the better prepared we can be for unexpected encounters.

Oh, Deer!
There are deer everywhere, but how much do you know about these graceful grazers?

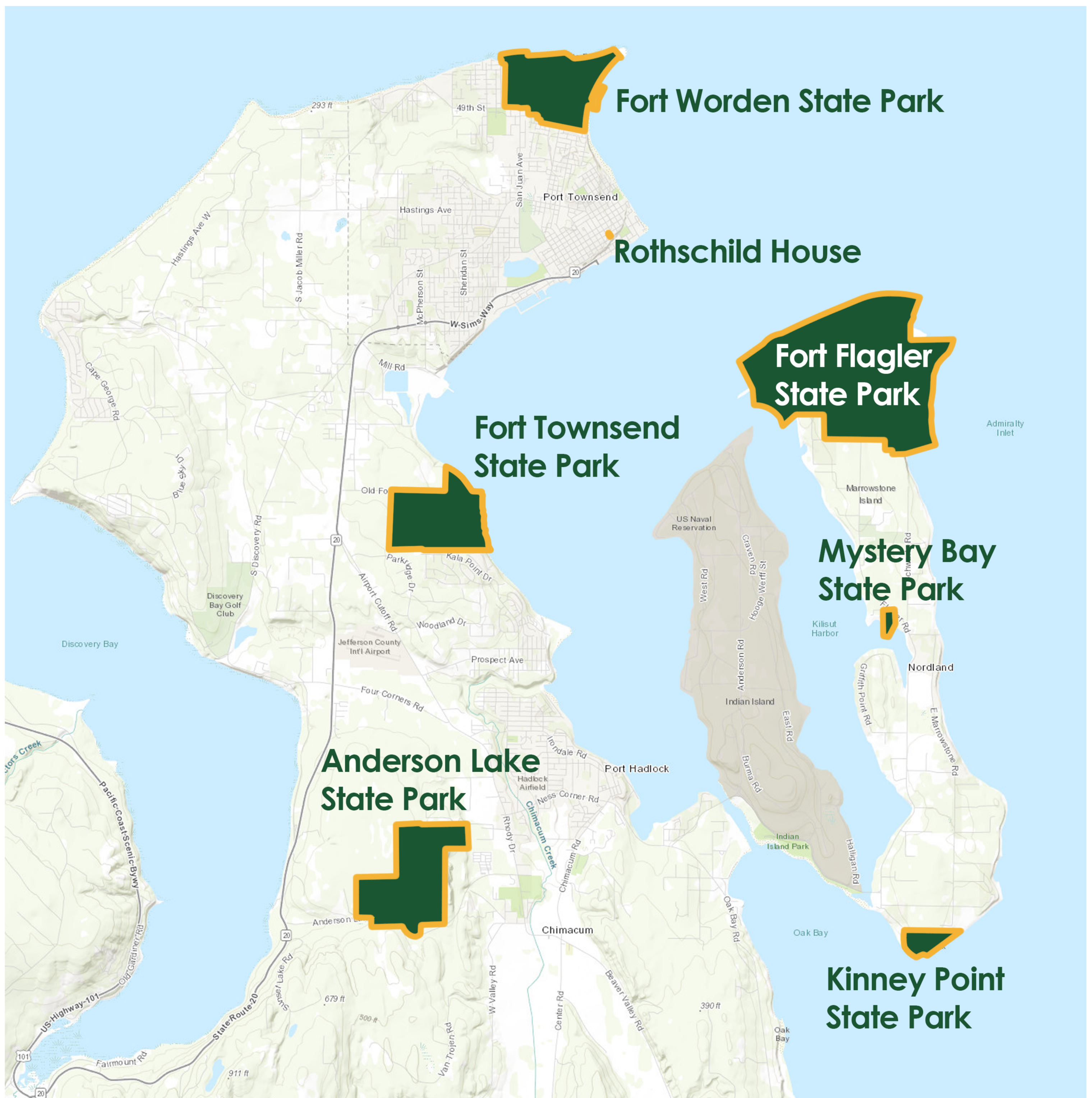
Wildlife Detectives
Discover how to read the forest for signs of wildlife.

The Un-nature Trail
By looking closely at our surroundings, we can uncover the secrets of nature and learn to care for it by removing things that don’t belong.

The Disappearing Gun
How did a gun the size of a school bus disappear?

What is a Fort?
Discover different types of forts throughout history and how they helped protect and defend areas and resources.

The Mythical Oozlefinch
Engage in a creative drawing exercise to discover the significance of the mythical Oozlefinch to the Coast Artillery Corps.



Washington State Parks

Olympic View Area



360-344-4426



Kelsey.Lang@parks.wa.gov



Olympic View Area State Parks