



Washington State Parks & Recreation Commission

Commission Work Session

Washington State Scenic Bikeways Program

Presented by: Bry Osmonson
Scenic Bikeways Coordinator
August 27, 2025



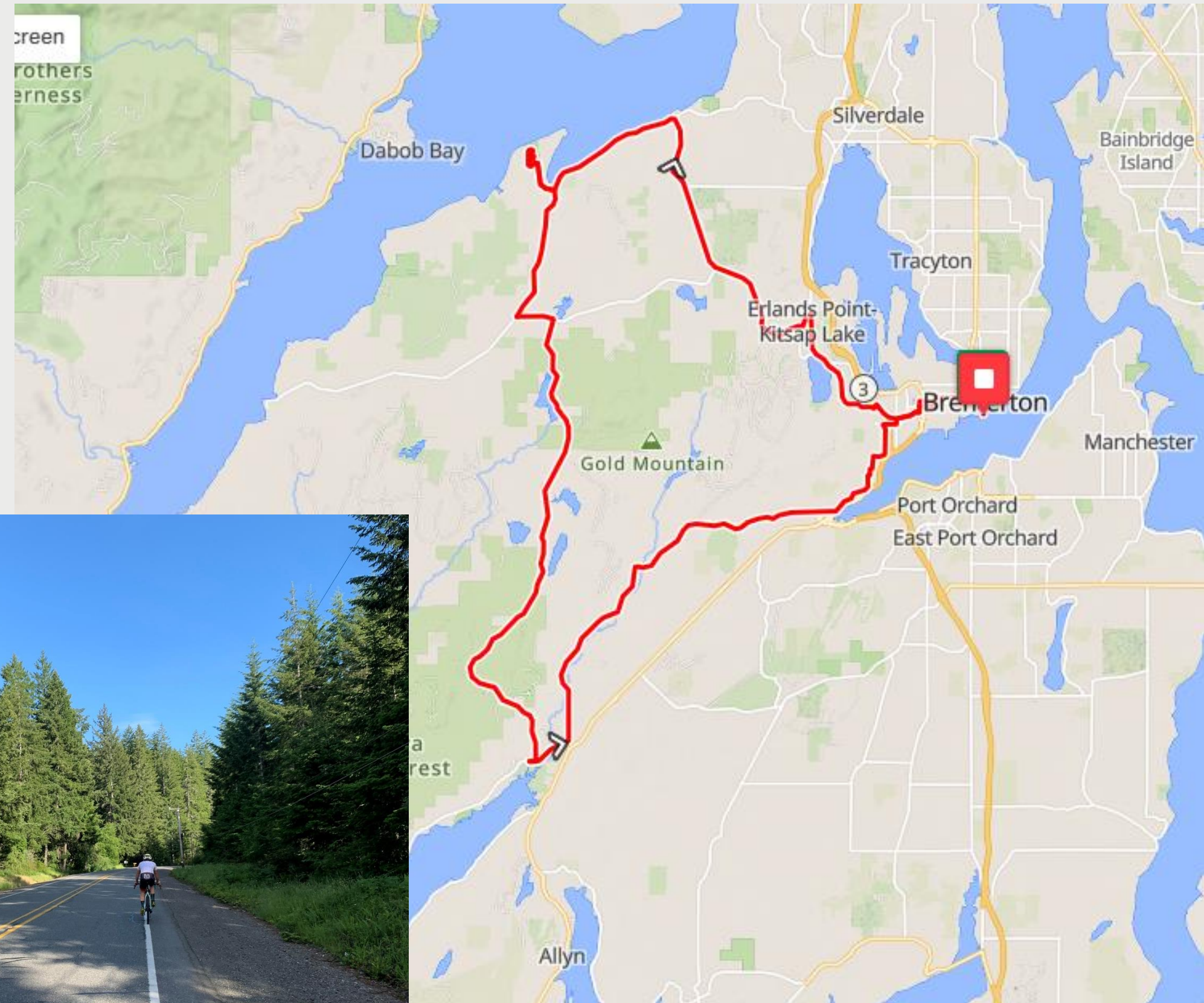
What are we here for?

- Provide an update on the Scenic Bikeways Program
- Ready to launch the Scenic Bikeways Program



Welcome

- Bike camping: a tale of two routes
 - A) Clockwise outside of Hood Canal
 - B) Triangle inside of Hood Canal



B) Roads between Belfair and Scenic Beach are generally quiet.

B) Belfair-Scenic Beach bike route on low-volume roads.

Presentation Outline

- Section 1 – Program Establishment
- Section 2 – Program Development
- Section 3 – Program Launch



Section 1 – Program Establishment



What is a Scenic Bikeway?

- Scenic bikeways may be comprised of bicycle paths, multiple-use trails, highways, or trail facilities managed by the commission
- ...notable scenic, recreational, cultural, or historic value
- ...encourage local economic development



Quiet roads between Seabeck, WA and Scenic Beach State Park.



RCW 79A.05.800

- Enacted in 2020
- State Parks to oversee
- Coordinate with WSDOT, local governments – collaborative intent
- Consent from bikeway owners
- Oregon Scenic Bikeways model legislation



Willapa Hills Trail State Park in Lewis County.



Oregon Scenic Bikeways Model

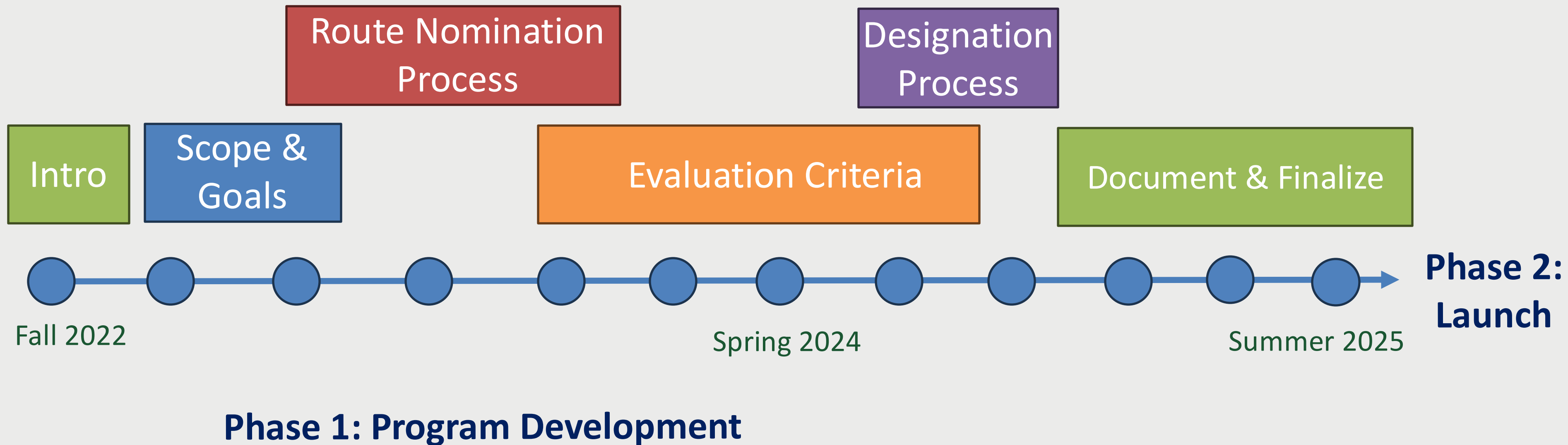
18 Routes over 17 years



Section 2 – Program Development

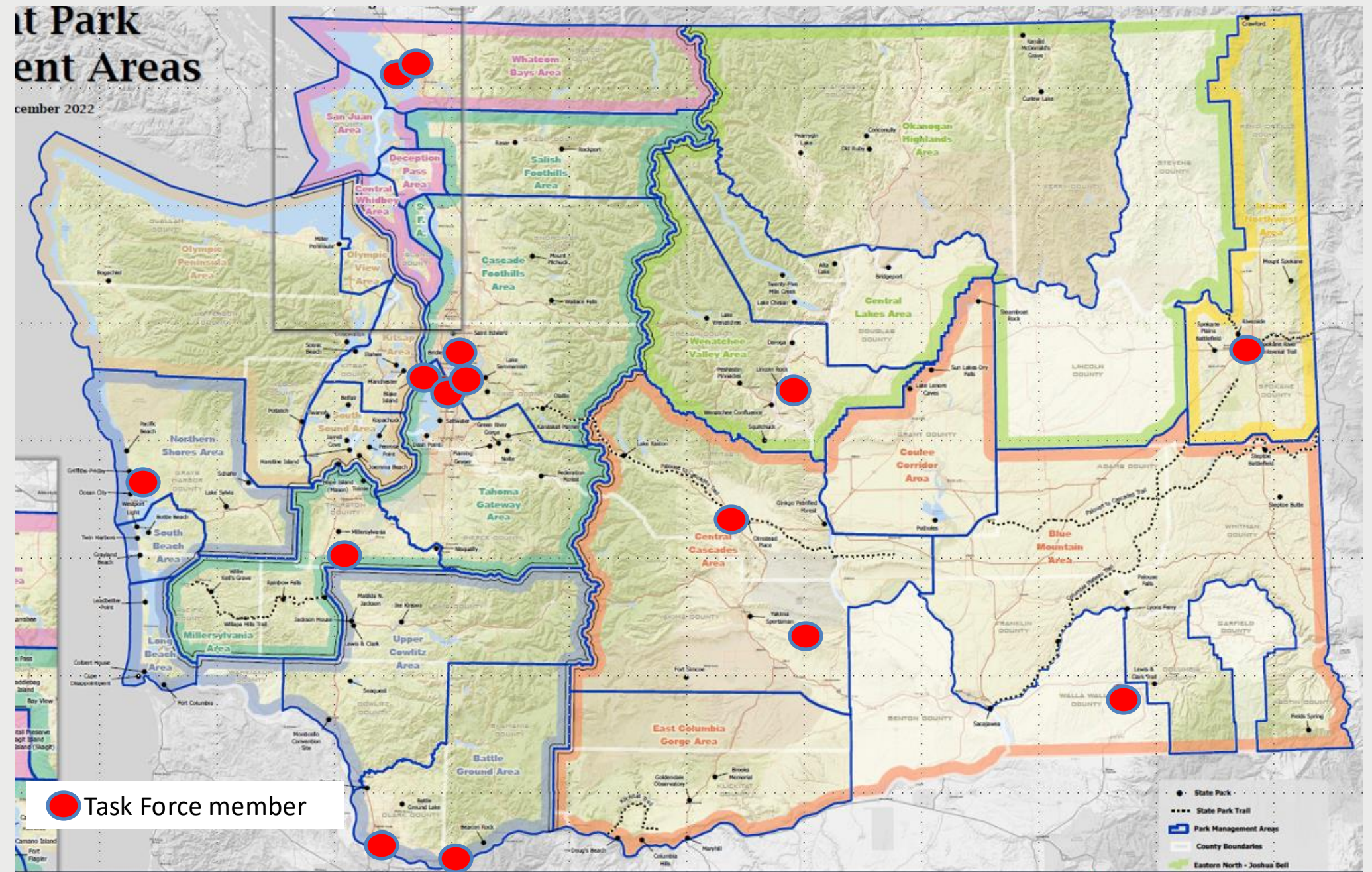


Program Development Process



Task Force

- Spring 2023-present
- Advisory nature
- Scope: Program development & evaluate in first round
- Perspectives: cyclists, tourism, WSDOT, Tribal, veteran, disability, adaptive cyclists, retired, bike advocacy, land manager, youth



Tribal Engagement

- Initiated spring 2023
- Meetings, e-mails, task force participation



Tribal Engagement Takeaways

- Consideration of potential impacts on Tribes
- Early and continuous engagement
- Include opportunities for Tribal perspectives
- Coordination with Tribal Relations



Outreach

- Advisory Task Force (9 meetings; 15 people from around the state)
- Internal advisory group (5-10 mtgs: Comms, Planning/RE, Stewardship, Region Superintendent, Area Managers from all regions)
- DNR, WDFW, WSDOT (Active Transportation & Scenic Byways)
- State of WA Tourism; WA State Destination Marketing Organizations (DMO's)
- WA State Trails Coalition Conference
- Association of Washington Cities
- WA State Association of Counties
- Rural Transportation Planning Organizations (RTPO's) working group



Pilot Nomination Process

5 Steps

1. Nomination
2. Presentations
3. Scenic Bikeways MOU
4. Designation
5. Implementation



Step 1 – Nomination

- Anyone may submit a route nomination
- Submit using Microsoft Forms online; map, photos
- Evaluation committee:
 - 2 State Parks staff
 - 4 advisory task force members including representation from WSDOT, tourism, Tribes, and at-large
- Highest scoring routes move on (up to 15)
- Send map of up to 15 proposed routes to Tribes



Step 1 – Nomination

- Eligibility check– consistency with RCW intent

Evaluation Criteria (0-5 points)

- Proponent affiliation
- Access to the route
- Bikeway types
- Unique experience
- Scenic, cultural/historic, recreational value



Step 2 – Presentations

- Starting with up to 15 route nominations
- Bikeway owners' (jurisdictions) acknowledgment
- Schedule virtual presentations on Teams for each route proponent
- Same evaluation committee
- Up to 5 routes move on to Step 3
 - Staff will brief the Commission at the end of Step 2



Step 2 – Presentations

Evaluation Criteria (0-5 points)

Administration and Feasibility:

- Proponent group
- Community support/opposition
- Financial feasibility

Inherent Values and Experience:

- Scenic value, cultural and historic value, recreational value
- Unique experience
- Route amenities and services
- Rider logistics
- Level of difficulty

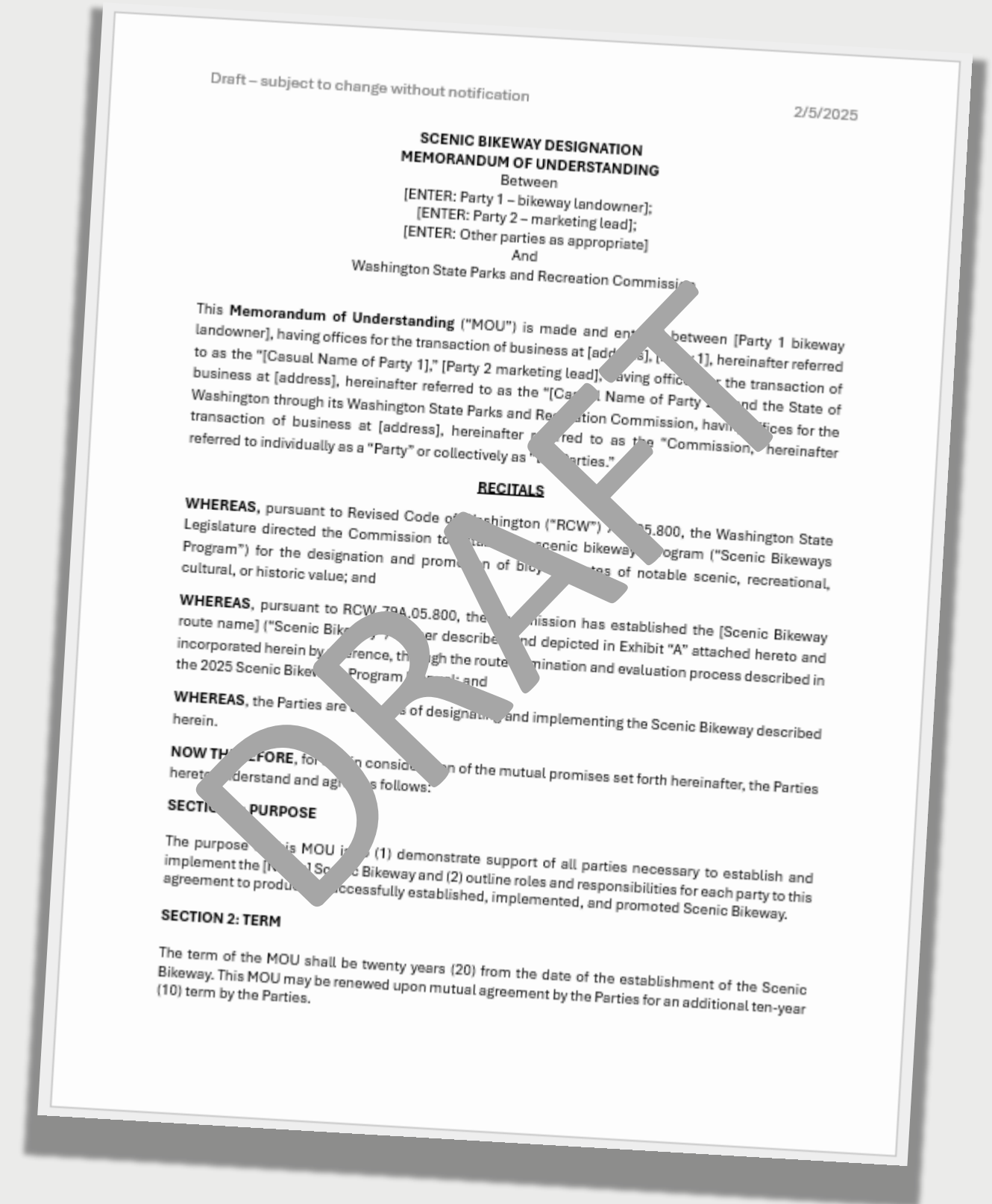


Palouse to Cascades State Park Trail



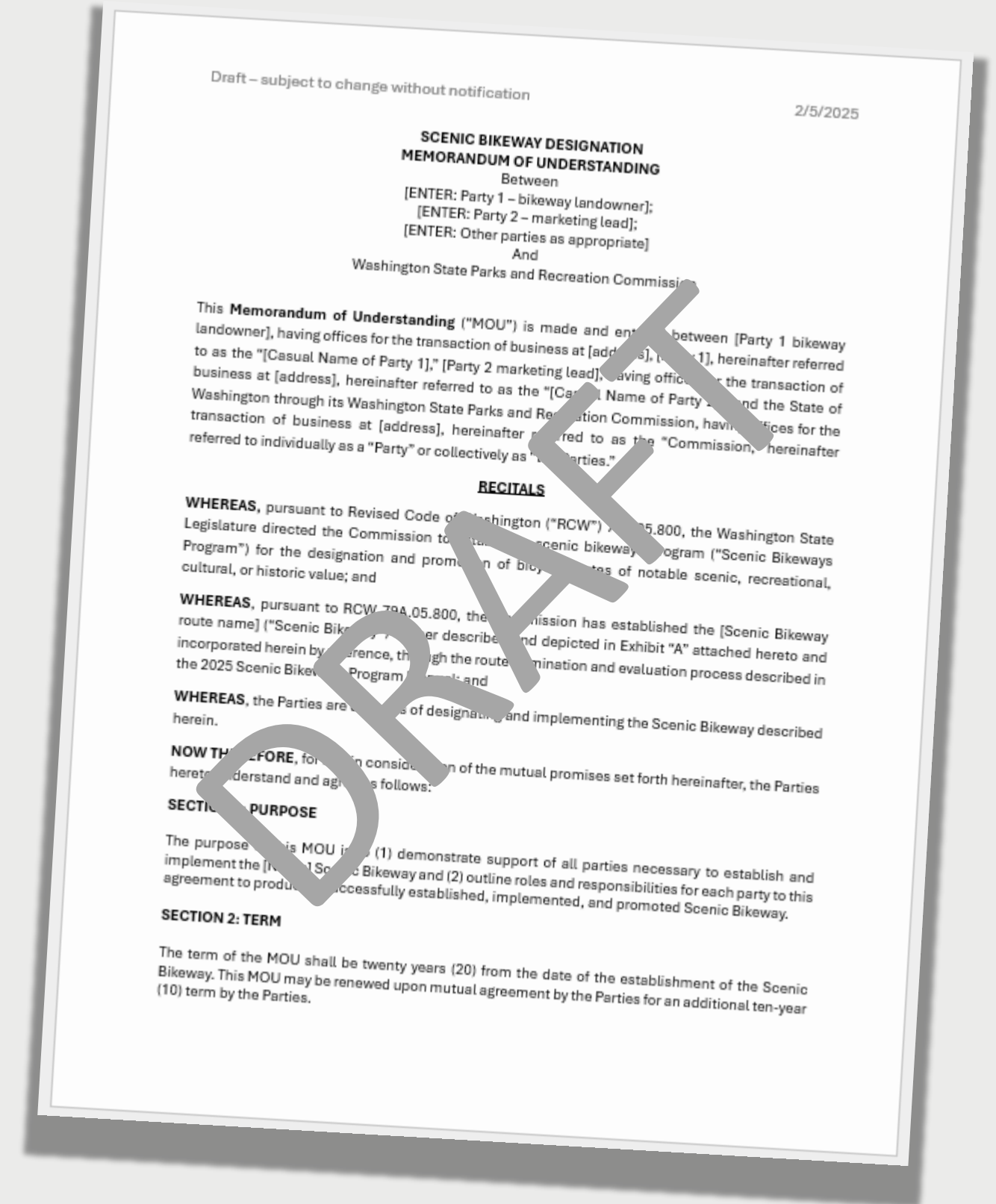
Step 3 – Scenic Bikeways MOU

- MOU – roles & responsibilities
- MOU parties:
 - Bikeway owners
 - Destination Marketing Organizations (DMO's)
 - State Parks
 - Other responsible parties (e.g. Tribes)
- Establishes State Parks as primary contact for Tribal engagement



Step 3 – Scenic Bikeways MOU

- Further review of top 5 proposed routes:
 - Tribes – draft MOU review
 - WSDOT, local governments
 - Environmental checklist



Step 4 – Designation

- Commission role:
 - Review and consider approval of up to 5 Scenic Bikeway designation(s)
 - Delegate authority to Director to sign future MOUs (and any future amendments)
- Opportunity for public comment
- Communication to Tribes post-designation



Step 5: Implementation

What State Parks will do:

- Plan, design, and procure initial Scenic Bikeway signs
- Develop official Scenic Bikeways route map

What MOU parties will do:

- Install and maintain signage
- Route marketing



Bike camping on Orcas Island, en route to Moran State Park.

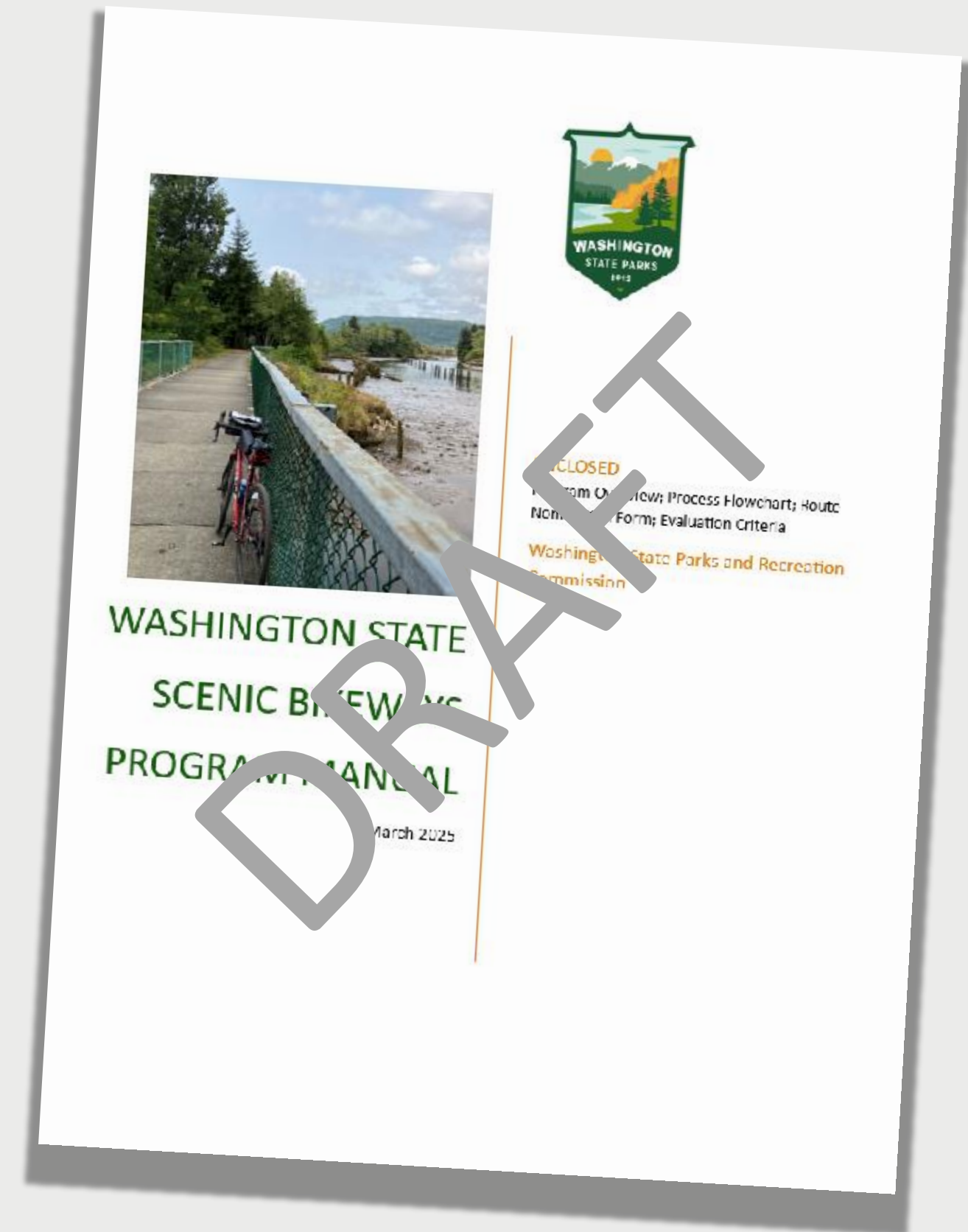


Section 3 – Program Launch



Scenic Bikeways Program Manual

- Summary of program development
- Instructions for proponents
 - Process flow chart
 - Nomination form questions
 - Evaluation criteria
- Pertinent info for potential partners and Tribes
 - MOU template
 - Involvement and reviews



Proposed Schedule

- Sept 2025: Notify public of program launch
- Oct-Nov: Nomination window open
- Dec-Jan: Step 1 Evaluation/ initiate Tribal review
- March 2026: Step 2 Evaluation– presentations
- April: Commission briefing
- April-June: Step 3 MOU development/ Tribal review
- July-September: Step 4 Designation
- October-completion: Step 5 Implementation
- Winter 2026: Review pilot round; refine and repeat



What else should you know?

- RCW does not include a sunset
- No dedicated funding source
- Trails program budget covering first round
- Folks are excited about this program!



Thank you!

