



Washington State Parks & Recreation Commission

Item E2:

Spokane River Centennial Trail – Land Classification Update and Spokane County Amended Easement

- Changing the current Land Classification
- Spokane County Parks, Recreation & Golf –
Amending a current 40 YR. Easement Agreement

Presented by: Ken Graham
Real Estate Program Manager

July 17, 2025



Washington State Parks & Recreation Commission Commission Meeting

**Spokane River Centennial Trail
Spokane County Parks, Recreation & Golf**

Commission to consider

- ❖ Land Class Change
- ❖ Easement Amendment







Strategic Alignment

Form partnerships with agencies, tribes, non-profits and new stakeholders

Expand use of partnerships, concessions and other business opportunities.



Background

This 95-acre park serves as a regional sports complex with sports fields, trails, a shelter, playground, and other amenities. The [Spokane Valley Junior Soccer Association](#) operates and maintains the soccer field complex side of the park, which includes the concessions building, through an agreement with Spokane County. There are 225 available parking spots.





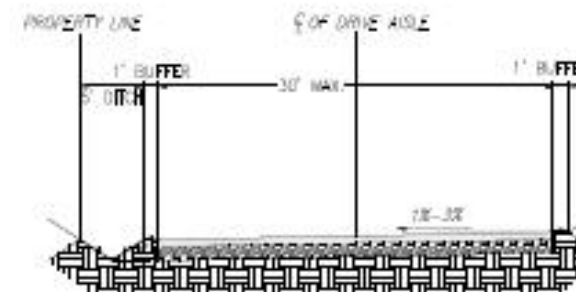
LEGEND

--- PROPERTY LINE BETWEEN STATE PARKS AND SPOKANE COUNTY PARKS

PHASE I IMPROVEMENTS ON STATE PARKS PROPERTY

FUTURE IMPROVEMENTS ON STATE PARKS PROPERTY

- ① APPROXIMATE ROAD LOCATION SHOWN FOR REFERENCE - FINAL ROAD LOCATION HAS NOT BEEN FINALIZED BUT WILL FALL WITHIN YELLOW AND BLUE SHADED ZONES OUTLINED ABOVE
- ② NATURAL TURF FIELD EXTENSION ON TO STATE PARKS PROPERTY - FUTURE PHASE
- ③ PHASE I ROAD AND PARKING IMPROVEMENTS ON SPOKANE COUNTY PROPERTY
- ④ PHASE I ARTIFICIAL TURF FIELD IMPROVEMENTS ON SPOKANE COUNTY PROPERTY



TYPICAL DRIVE AISLE SECTION - 3:1 TIE IN

PLANTE'S FERRY

STATE PARK EASEMENT

EXHIBIT C

PARCELS:
45032.0084
45032.0080
45033.0112

DATE:
08-27-2024

DRAWN BY:
JC

REVIEWED BY:
N/A



EXHIBIT C - STATE PARK EASEMENT AMENDMENT



Spokane County Parks/State Parks

Current Agreement

- ❖ **Commission-Approved 40-year Easement**
- ❖ **Expires in 2051**
- ❖ **28 Years remaining on Easement**
- ❖ **Purpose: To handle overflow parking and use of existing dirt road westerly of the sports complex.**



Connections to Spokane River Centennial Trail



Proposal:

- Amend the current easement agreement to allow a road approach off Trent Avenue and develop new road along the property line of their complex.
- Change the Land Class from Resource Recreation to Recreation



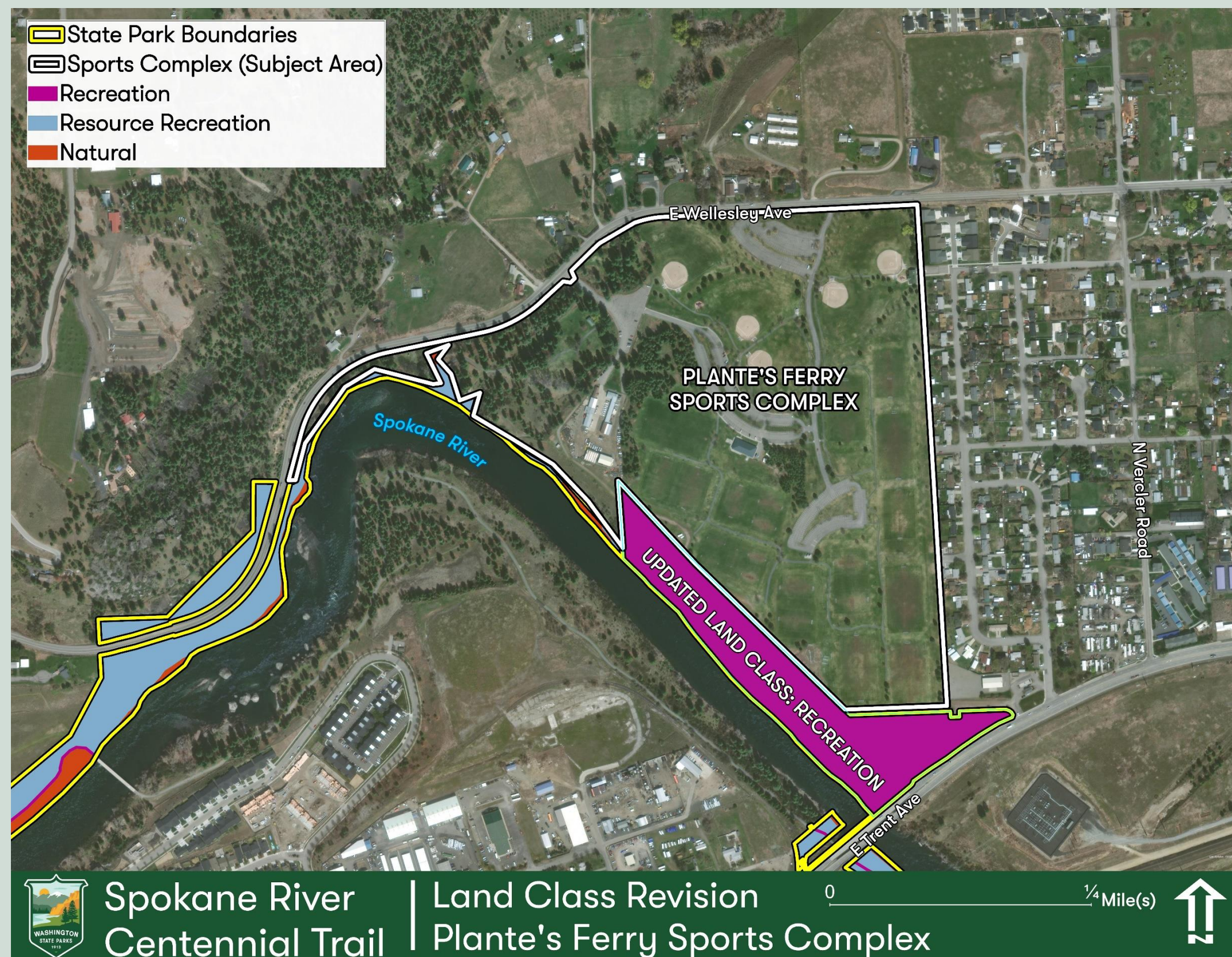


Spokane River Centennial Trail Current Land Classification *Resource Recreation Area*

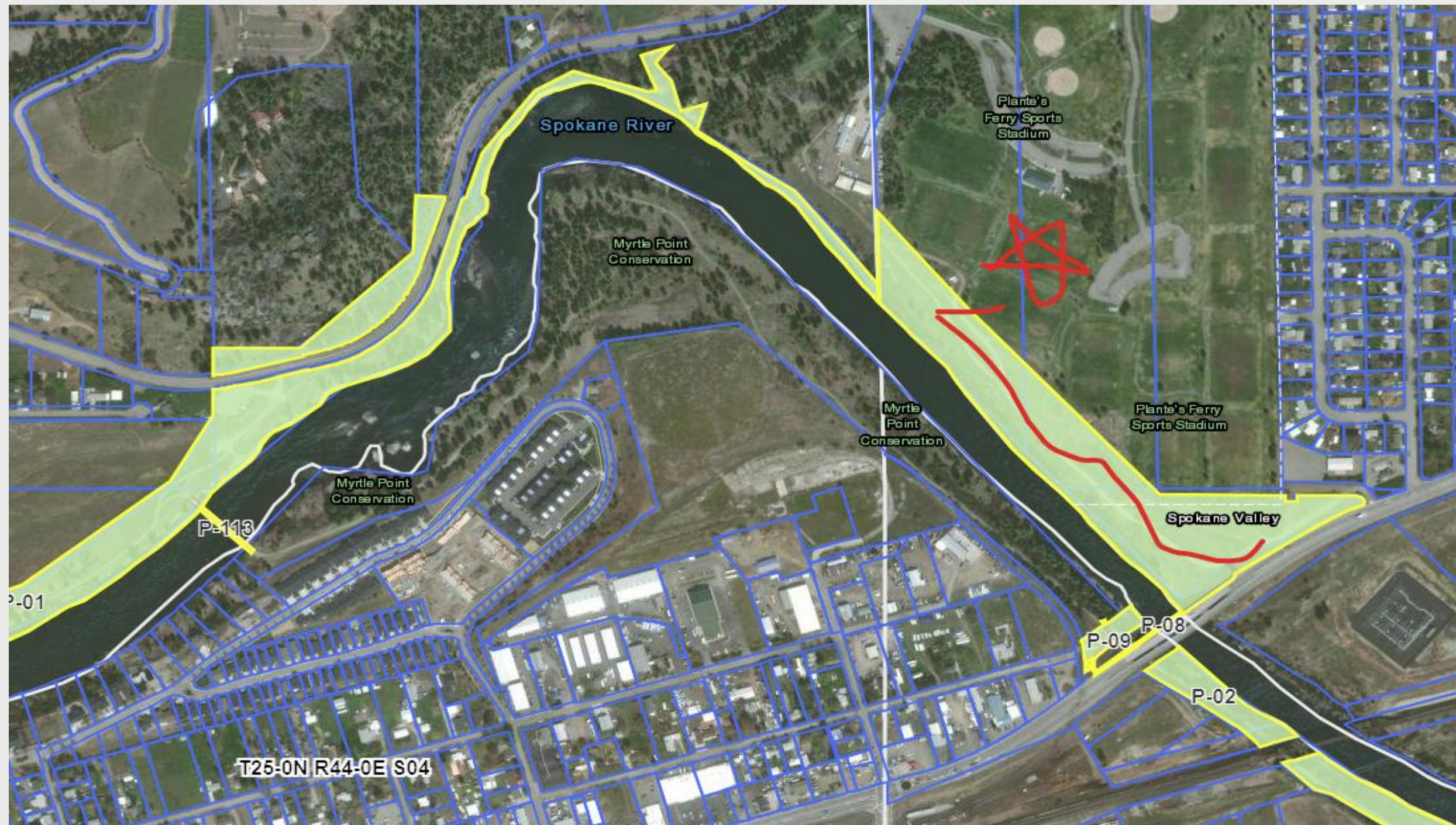




Spokane River Centennial Trail Land Class Change Map



Benefits to State Parks



Encourage Partnerships

Develop City and County
Sponsored Events

Provide Recreation for All





REQUESTED ACTION

That the Washington State Parks and Recreation Commission

- 1. Adopt revised land classifications for Spokane River Centennial State Park Trail as recommended by staff in Appendix 3**
- 2. Authorize the Director or designee to negotiate and finalize Amendment # 1 to the existing 40-year easement agreement with Spokane County Parks, Recreation and Golf**



Questions?

