



WASHINGTON STATE PARKS VOLUNTEER PROGRAM

Park Host Opportunities List - by Park Management Area 2025

EASTERN REGION - NORTH

MANAGEMENT AREA	PARK	CONTACT NUMBER
Central Lakes	Alta Lake (2 sites)	509-923-2473
	Bridgeport	509-923-2473
	Lake Chelan (2 sites)	509-687-3710
	Twenty-Five Mile Creek	509-687-3610
Inland Northwest	Crawford - Gardner Cave Interpretive	509-238-4258
	Mount Spokane - Bald Knob Campground	509-238-4258
	Riverside - Bowl & Pitcher Campground	509-465-5064
	Riverside - Equestrian Campground	509-465-5064
	Riverside - Lake Spokane Campground	509-465-5064
	Riverside - Nine-Mile Recreation Area	509-465-5064
	Riverside - Spokane House Interpretive Center	509-465-5064
Okanogan Highlands	Conconully - Main Campground	509-826-7408
	Conconully - Upper Lake Campground	509-826-7408
	Curlew Lake	509-775-3592
	Pearrygin Lake (2 sites)	509-996-2370
Wenatchee Valley	Daroga	509-784-0229
	Lake Wenatchee (2 sites)	509-763-3101
	Lincoln Rock (4 sites)	509-884-8702
	Squilchuck	509-669-1889
	Wenatchee Confluence (2 sites)	509-669-1889

EASTERN REGION - SOUTH

MANAGEMENT AREA	PARK	CONTACT NUMBER
Blue Mountain	Camp Wooten Retreat Center	509-337-6457
	Fields Spring	509-256-3332
	Lewis and Clark Trail	509-337-6457

	Lyons Ferry	509-337-6457
	Palouse Falls	509-337-6457
	Sacajawea Interpretive (2 sites)	509-337-6457
Central Cascades	Fort Simcoe	509-968-5298
	Ginkgo Interpretive Center	509-968-5298
	Lake Easton (2 sites)	509-968-5298
	Wanapum Recreation Area	509-968-5298
	Yakima Sportsman	509-968-5298
Coulee Corridor	Potholes (2 sites)	509-346-2759
	Steamboat Rock (4 sites)	509-633-1304
	Sun Lakes-Dry Falls - Campground (2 sites)	509-632-5139
	Sun Lakes-Dry Falls - Camp Delany Retreat Center	509-632-5139
	Sun Lakes-Dry Falls - Interpretive Center	509-632-5139
East Columbia Gorge	Brooks Memorial	509-773-4611
	Columbia Hills	509-773-3145
	Maryhill (2 sites)	509-773-5007

NW REGION - NORTH

MANAGEMENT AREA	PARK	CONTACT NUMBER
Central Whidbey	Fort Casey - Campground	CentralWhidbeyVolunteers@parks.wa.gov
	Fort Casey - Boat Launch	CentralWhidbeyVolunteers@parks.wa.gov
	Fort Casey - Admiralty Head Lighthouse	CentralWhidbeyVolunteers@parks.wa.gov
	Fort Ebey	CentralWhidbeyVolunteers@parks.wa.gov
	South Whidbey (Day Use Park)	CentralWhidbeyVolunteers@parks.wa.gov
Deception Pass	Deception Pass - Campgrounds (5 sites)	360-675-3767
	Deception Pass - Cornet Bay Marina	360-675-3767
San Juan	Lime Kiln	360-378-2044
	Moran - Campground (2 sites)	360-376-2326
	Moran - Summit Interpretive Center	360-376-2326
	Moran - Camp Moran Retreat Center	360-376-2326
	Spencer Spit (2 sites)	360-468-2251

Whatcom Bays	Birch Bay (2 sites)	360-371-2800
	Larrabee	360-676-2093

NW REGION - SOUTH

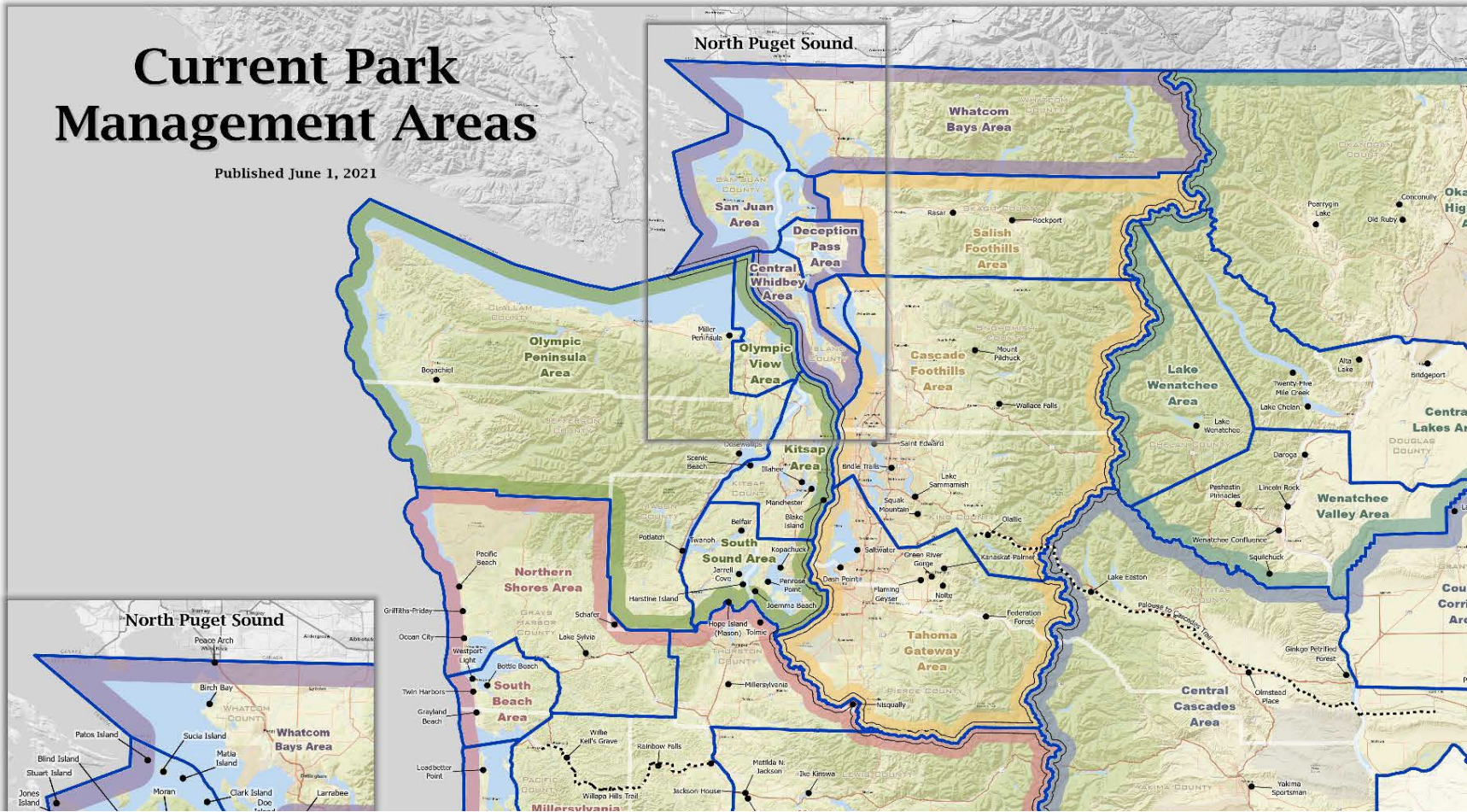
MANAGEMENT AREA	PARK	CONTACT NUMBER
Cascade Foothills	Lake Sammamish (2 sites- Day Use Park)	425-649-4275
	Wallace Falls (Day Use Park w/2 walk in camp sites)	360-793-0420
Millersylvania	Millersylvania (2 sites)	skylar.penny@parks.wa.gov
	Millersylvania ELC Retreat Center	skylar.penny@parks.wa.gov
	Rainbow Falls	skylar.penny@parks.wa.gov
Salish Foothills	Bay View (2 sites)	360-757-0227
	Cama Beach (Day Use Park)	
	Camano Island (2 sites)	360-387-3031
	Rasar (3 sites)	360-826-3942
	Rockport (Day Use Park)	360-853-8461
Tahoma Gateway	Dash Point (4 sites)	253-661-4955
	Federation Forest (Day Use Park)	360-886-0148
	Kanaskat-Palmer (2 sites)	360-886-0148
	Nolte (Day Use Park)	360-886-0148
	Saltwater (2 sites)	253-661-4955

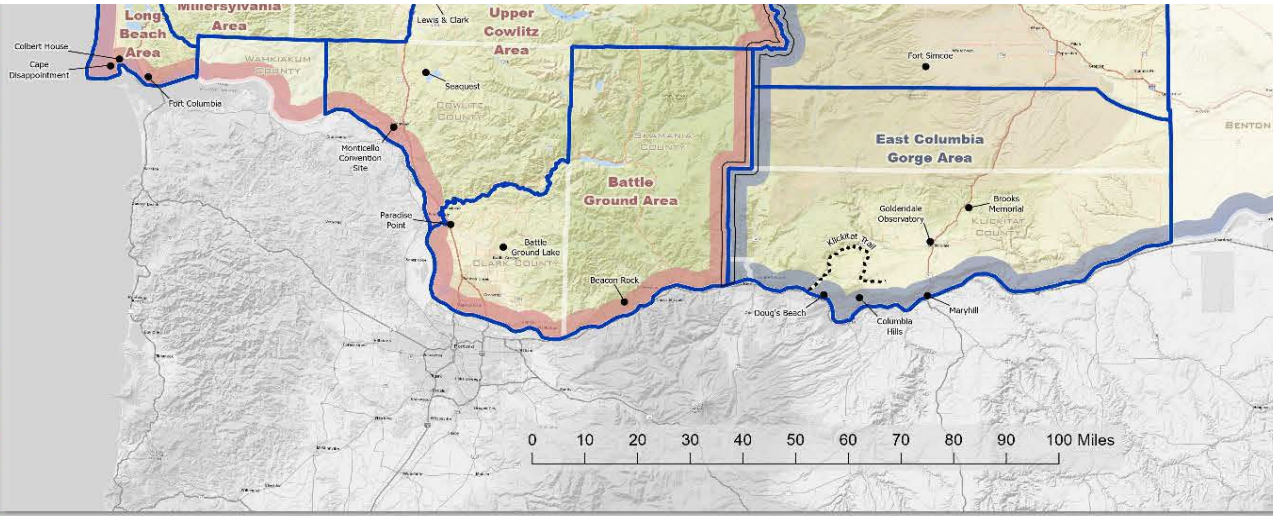
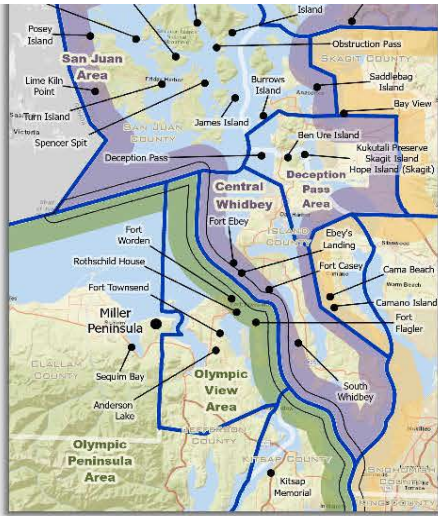
SW REGION - NORTH

MANAGEMENT AREA	PARK	CONTACT NUMBER
Kitsap Area	Blake Island (Marine Park - Moorage ONLY)	360-731-8330
	Illahee	360-478-6460
	Kitsap Memorial	360-779-3205
	Manchester	360-871-4065
	Scenic Beach	360-830-5079
Olympic Peninsula Area	Bogachiel	360-374-6356
	Dosewallips (2 sites)	360-796-4415
	Potlatch	360-877-5361
	Sequim Bay - Campground	360-683-4235

	Sequim Bay - Ramblewood Retreat Center	360-683-4235
Olympic View Area	Anderson Lake (Day Use Park)	360-385-1259
	Fort Flagler - Campground (3 sites)	360-385-1259
	Fort Flagler - Interpretive Tours	360-385-1259
	Fort Flagler - Museum (2 sites)	360-385-1259
	Fort Worden - Upper Forest Campground	360-344-4402
	Fort Worden - Lower Beach Campground	360-344-4402
	Fort Worden - Commanding Officer's Quarters Museum	360-344-4402
	Fort Worden - Coast Artillery Museum (Interpretive)	360-344-4402
	Fort Worden - Visitor Center Information	
	Mystery Bay (Marine Park - Moorage Only)	360-385-1259
South Sound Area	Belfair (4 sites)	360-275-0668
	Jarrell Cove	360-426-9226
	Joemma Beach	253-884-1944
	Penrose Point	253-884-2514
	Twanoh	360-275-2222
SW REGION - SOUTH		
MANAGEMENT AREA	PARK	CONTACT NUMBER
Battle Ground	Battle Ground Lake	360-263-2350
	Paradise Point	360-263-2350
Long Beach	Cape Disappointment - Campground (3 sites)	360-642-3078
	Cape Disappointment - Lewis & Clark Int Center (2)	360-642-3029
	Cape Disappointment - Fort Columbia Int Center (2)	360-642-3029
	Cape Disappointment - North Head Lighthouse (2)	360-642-3029
Northern Shores	Lake Sylvia	360-249-3621
	Ocean City	360-289-3553
	Pacific Beach	360-289-3553
	Schafer (2 sites)	360-249-3621
South Beach	Grayland Beach (2 sites)	360-268-9717
	Twin Harbors	

Upper Cowlitz	Ike Kinswa (2 sites)	360-983-3402
	Ike Kinswa NEW- concession/day use/campground	360-983-3402
	Lewis and Clark Campground	360-864-2643
	Lewis and Clark ELC	360-864-2643
	Seaquest - Campground	360-644-5235
	Seaquest - Yurt Village & Campground	360-644-5235
	Seaquest - Mount St Helens Visitor Center/Campground	360-274-8633





2025

Apr, May, Jun, Jul, Aug, Sep, Oct

Mar, Apr, May, Aug, Sep, Oct

Mar, Apr, Aug, Sep

Mar, Apr, Aug, Sep, Oct

May, Jun, Jul, Aug, Sep

NO OPENINGS

Feb, Mar, Apr, Jul, Sep

Jul, Aug

Apr, May, Aug, Sep

Apr, Jun, Jul, Aug

Apr, May, Jun, Jul

May

Jun, Jul, Aug Sep

May, Jul, Sep, Oct

Jun, Jul, Aug, Sep

Apr

May, Jun, Aug, Sep, Oct

Apr, May, Jun, July, Aug, Sep, Oct, Nov, Dec

May, Sep, Oct

Jan, Mar, Apr, Jun, Jul, Aug, Oct

2025

Apr, May, Jun, Jul, Aug, Sep

May, Jun, Aug, Sep

Apr, May, Jun, Jul, Aug, Sep, Oct

Apr, May, Jun, Jul, Aug, Sep, Oct
Apr, May, Jun, Jul, Aug, Sep, Oct
Apr, May, Jul, Aug, Oct
May, Jun, Jul, Aug
May, Jun, Jul, Aug, Sep, Oct
May, Sep, Oct
Mar, May, Jun, Aug, Oct
Mar, Apr, Aug, Oct
Apr, Jun, Jul, Aug, Sep, Oct, Nov, Dec
Apr, Aug, Oct
Apr, May, Jun, Jul, Aug, Sep, Oct
Jun, Jul, Aug, Sep, Oct
Apr, May, Jun, Jul, Aug, Sep
Apr, May, Jun, Jul, Aug, Sep
Apr
Apr, May, Jul, Aug, Oct

--

2025

NO OPENINGS
NO OPENINGS
Dec
Mar, Apr
Mar, Apr, Sep
Apr, May, Jun, Aug, Sep, Oct
CLOSED FOR 2025
NO OPENINGS
Apr, May, Sep
CLOSED FOR 2025
May, Jun, Jul, Aug, Sep
NO OPENINGS

Apr, May, Aug

Jun, Jul, Aug, Dec

2025

Apr, Jun, Jul, Aug, Sep, Oct, Nov, Dec

Jul, Aug, Sep, Dec

Jan, Jun, Jul, Sep, Nov, Dec

Sep

Jan, May, Jun, Jul, Oct, Nov, Dec

May

CLOSED FOR 2025

Jun, Nov, Dec

Jan, Feb, Mar, Apr, May, Jun, Jul, Aug, Sep, Oct, Nov, Dec

May, Jun, Jul, Aug, Sep, Oct

Jan, Mar, Apr, May, Jun, Jul, Aug, Sep, Oct, Nov, Dec

Jun

Oct, Nov, Dec

NO OPENINGS

Jan, Feb, Mar, Apr, Jun, Aug, Sep

2025

Jan, Feb, Mar, Apr, May, Jun, Jul, Aug, Sep, Oct, Nov, Dec

Jan, Feb, Mar, Nov, Dec

NO OPENINGS

NO OPENINGS

Apr, Aug, Oct, Nov, Dec

Jan, Feb, Mar, Apr, Sep, Oct, Nov, Dec

Mar, Apr, May, Jun

NO OPENINGS

Feb, Oct, Nov, Dec

Apr, Jul, Oct, Nov, Dec
NO OPENINGS
NO OPENINGS
May
Jul, Oct
NO OPENINGS
NO OPENINGS
NO OPENINGS
Feb, Oct, Nov, Dec
NOT AVAILABLE IN 2025
Mar, Apr, May, Jun, Jul, Aug, Sep, Oct
Feb, Mar, Apr, Jun, Aug, Sep, Oct
NO OPENINGS
NO OPENINGS
Mar, Apr
Apr
2025
May
Jul, Nov, Dec
Jan, Feb, Mar, May, Jun, Aug
Nov, Dec
NO OPENINGS
May
Feb, May, Jun
Apr, May, Jun, Jul, Aug, Sep, Nov, Dec
NO OPENINGS
Feb, May, Jun, Jul, Aug, Sep, Oct, Nov
Mar, Apr, May, Jun, Oct, Nov, Dec
CLOSED FOR 2025

Mar, Jul, Sep, Oct, Nov, Dec
May, Sep
Apr, May, Jun, Jul, Sep
May, Jun, Jul, Aug, Sep
Mar, Apr, Aug, Sep, Oct, Nov, Dec
Apr, May, Sep, Oct, Nov, Dec
Jan, Feb, Mar, Apr, Sep, Oct, Nov, Dec

