

**WASHINGTON STATE PARKS VOLUNTEER PROGRAM****Park Host Opportunities List - by Park Management Area 2025**

12/5/2024 16:40

EASTERN REGION - NORTH			
MANAGEMENT AREA	PARK	CONTACT NUMBER	2025
Central Lakes	Alta Lake (2 sites)	509-923-2473	Apr, May, Jun, Jul, Aug, Sep, Oct
	Bridgeport	509-923-2473	Mar, Apr, May, Jun, Jul, Aug, Sep, Oct
	Lake Chelan (2 sites)	509-687-3710	Mar, Apr, May, Jun, Jul, Aug, Sep, Oct
	Twenty-Five Mile Creek	509-687-3610	Mar, Apr, May, Jun, Jul, Aug, Sep, Oct
Inland Northwest	Crawford - Gardner Cave Interpretive	509-238-4258	May, Jun, Jul, Aug, Sep
	Mount Spokane - Bald Knob Campground	509-238-4258	NO OPENINGS
	Riverside - Bowl & Pitcher Campground	509-465-5064	Jan, Feb, Mar, Apr, Sep
	Riverside - Equestrian Campground	509-465-5064	Jul, Aug
	Riverside - Lake Spokane Campground	509-465-5064	Apr, May, Jun, Jul, Aug, Sep
	Riverside - Nine-Mile Recreation Area	509-465-5064	Apr, Jun, Jul, Aug
	Riverside - Spokane House Interpretive Center	509-465-5064	Apr, May, Jun, Jul, Aug, Sep
Lake Wenatchee	Lake Wenatchee (2 sites)	509-763-3101	May, Jun, Jul, Aug, Sep, Oct
Okanogan Highlands	Conconully - Main Campground	509-826-7408	May, Jun, Jul, Aug, Sep, Oct
	Conconully - Upper Lake Campground	509-826-7408	Jun, Jul, Aug, Sep
	Curlew Lake	509-775-3592	May, Jul, Aug, Sep, Oct
	Pearrygin Lake (2 sites)	509-996-2370	Jun, Jul, Aug, Sep
Wenatchee Valley	Daroga	509-784-0229	NO OPENINGS
	Lincoln Rock (4 sites)	509-884-8702	Apr, May, Jun, July, Aug, Sep, Oct, Nov, Dec
	Squilchuck	509-669-1889	May, Sep, Oct
	Wenatchee Confluence (2 sites)	509-669-1889	Jan, Mar, Apr, Jun, Jul, Aug, Oct
EASTERN REGION - SOUTH			
MANAGEMENT AREA	PARK	CONTACT NUMBER	2025
Blue Mountain	Camp Wooten Retreat Center	509-337-6457	Apr, May, Jun, Jul, Aug, Sep
	Fields Spring	509-337-6457	May, Jun, Jul, Aug, Sep, Oct
	Lewis and Clark Trail	509-337-6457	Apr, May, Jun, Jul, Aug, Sep, Oct
	Lyons Ferry	509-337-6457	Apr, May, Jun, Jul, Aug, Sep, Oct
	Palouse Falls	509-337-6457	Apr, May, Jun, Jul, Aug, Sep, Oct
	Sacajawea Interpretive (2 sites)	509-337-6457	Apr, May, Jun, Jul, Aug, Oct
Central Cascades	Fort Simcoe	509-968-5298	May, Jun, Jul, Aug
	Ginkgo Interpretive Center	509-968-5298	May, Jun, Jul, Aug, Sep, Oct
	Lake Easton (2 sites)	509-968-5298	May, Jun, Jul, Sep, Oct
	Wanapum Recreation Area	509-968-5298	Mar, May, Jun, Aug, Sep
	Yakima Sportsman	509-968-5298	Mar, Apr, Aug, Sep, Oct
Coulee Corridor	Potholes (2 sites)	509-346-2759	Mar, Apr, Jun, Jul, Aug, Sep, Oct, Nov, Dec
	Steamboat Rock (4 sites)	509-633-1304	Apr, May, Jun, Jul, Aug, Oct
	Sun Lakes-Dry Falls - Campground (2 sites)	509-632-5139	Apr, May, Jun, Jul, Aug, Sep, Oct

	Sun Lakes-Dry Falls - Camp Delany Retreat Center	509-632-5139	Apr, May, Jun, Jul, Aug, Sep, Oct
	Sun Lakes-Dry Falls - Interpretive Center	509-632-5139	Apr, May, Jun, Jul, Aug, Sep
	East Columbia Gorge		
	Brooks Memorial	509-773-4611	Apr, May, Jun, Jul, Aug, Sep
	Columbia Hills	509-773-3145	Apr, May, Jun, Jul, Aug, Sep, Oct
	Maryhill	509-773-5007	Apr, May, Jun, Jul, Aug, Sep, Oct

**NW REGION - NORTH**

MANAGEMENT AREA	PARK	CONTACT NUMBER	2025
Central Whidbey	Fort Casey - Campground	<a href="mailto:CentralWhidbeyVolunteers@parks.wa.gov">CentralWhidbeyVolunteers@parks.wa.gov</a>	Nov, Dec
	Fort Casey - Boat Launch	<a href="mailto:CentralWhidbeyVolunteers@parks.wa.gov">CentralWhidbeyVolunteers@parks.wa.gov</a>	Apr, May
	Fort Casey - Admiralty Head Lighthouse	<a href="mailto:CentralWhidbeyVolunteers@parks.wa.gov">CentralWhidbeyVolunteers@parks.wa.gov</a>	Mar, Oct, Nov, Dec
	Fort Ebey	<a href="mailto:CentralWhidbeyVolunteers@parks.wa.gov">CentralWhidbeyVolunteers@parks.wa.gov</a>	Mar, Apr
	South Whidbey (Day Use Park)	<a href="mailto:CentralWhidbeyVolunteers@parks.wa.gov">CentralWhidbeyVolunteers@parks.wa.gov</a>	Mar, Apr, May, Sep, Oct
Deception Pass	Deception Pass - Campgrounds (5 sites)	360-675-3767	Apr, May, Jun, Aug, Sep, Oct
	Deception Pass - Cornet Bay Marina	360-675-3767	CLOSED FOR 2025
San Juan	Lime Kiln	360-378-2044	NO OPENINGS
	Moran - Campground (2 sites)	360-376-2326	Apr, May, Jun, Jul, Aug, Sep
	Moran - Summit Interpretive Center	360-376-2326	CLOSED FOR 2025
	Moran - Camp Moran Retreat Center	360-376-2326	May, Jun, Jul, Aug, Sep
	Spencer Spit (2 sites)	360-468-2251	Apr
Whatcom Bays	Birch Bay (2 sites)	360-371-2800	Jan, Apr, May, Jul, Aug, Sep
	Larrabee	360-676-2093	Feb, Jun, Jul, Aug, Sep, Oct, Nov, Dec

**NW REGION - SOUTH**

MANAGEMENT AREA	PARK	CONTACT NUMBER	2025
Cascade Foothills	Lake Sammamish (2 sites- Day Use Park)	425-649-4275	Jan, Feb, Mar, Apr, May, Jun, July Aug, Sep, Oct, Nov, Dec
	Wallace Falls (Day Use Park w/2 walk in camp sites)	360-793-0420	Jul, Aug, Sep, Dec
Salish Foothills	Bay View (2 sites)	360-757-0227	May
	Cama Beach (Day Use Park)		CLOSED FOR 2025
	Camano Island (2 sites)	360-387-3031	Mar, Apr, May, Jun, Aug, Nov, Dec
	Rasar (3 sites)	360-826-3942	Jan, Feb, Mar, Apr, May, Jun, Jul, Aug, Sep, Oct, Nov, Dec
	Rockport (Day Use Park)	360-853-8461	May, Jun, Jul, Aug, Sep, Oct
Tahoma Gateway	Dash Point (4 sites)	253-661-4955	Jan, Feb, Mar, Apr, May, Jun, Jul, Aug, Sep, Oct, Nov, Dec
	Federation Forest (Day Use Park)	360-886-0148	Jun, Oct
	Kanaskat-Palmer (2 sites)	360-886-0148	Aug, Sep, Oct, Nov, Dec
	Nolte (Day Use Park)	360-886-0148	Sep
	Saltwater (2 sites)	253-661-4955	Jan, Mar, Apr, May, Jun, Jul, Aug, Sep

**SW REGION - NORTH**

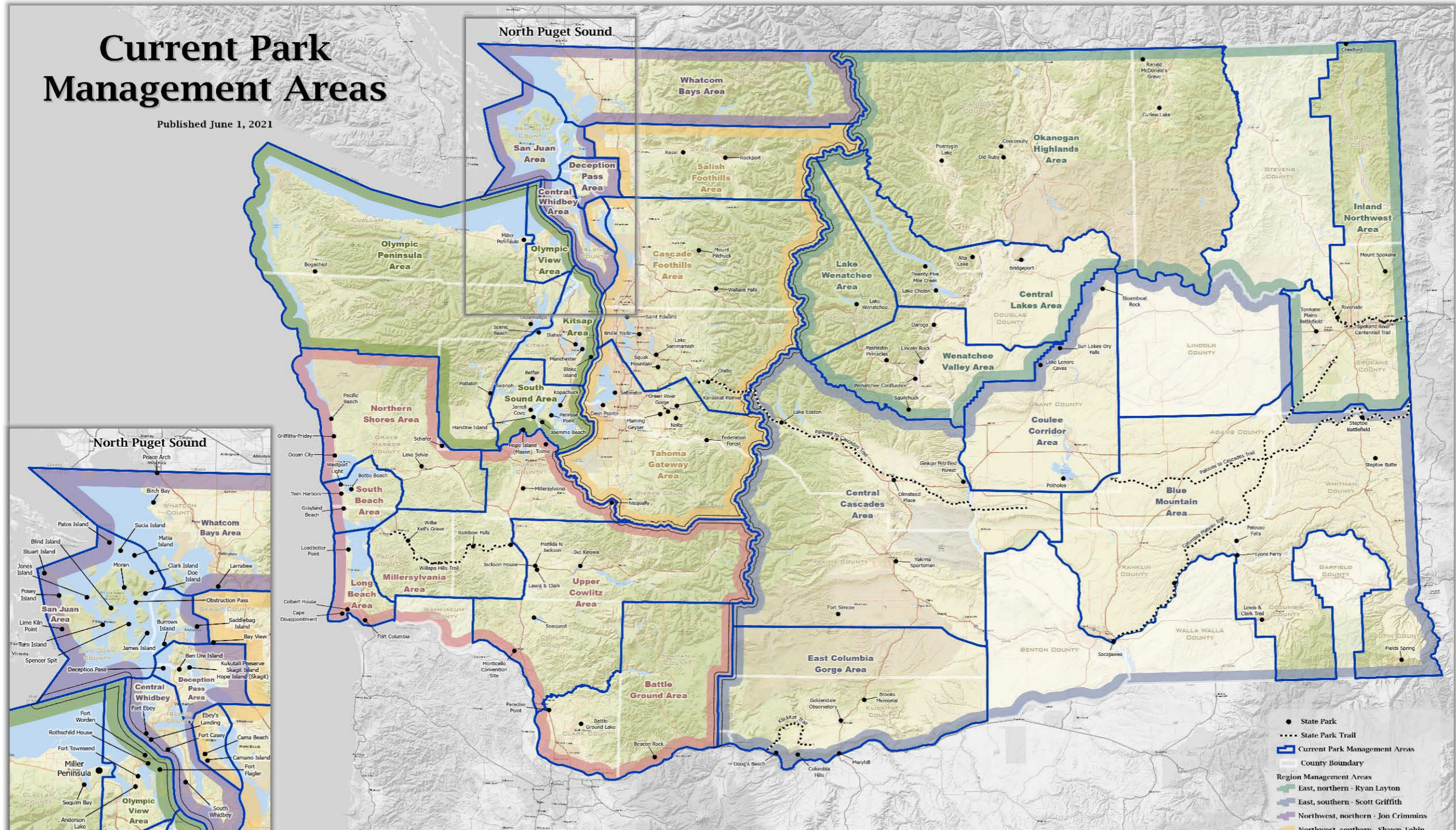
MANAGEMENT AREA	PARK	CONTACT NUMBER	2025
Kitsap Area	Blake Island (Marine Park - Moorage ONLY)	360-731-8330	Jan, Feb, Mar, Apr, May, Jun, Jul, Aug, Sep, Oct, Nov, Dec
	Illahee	360-478-6460	Jan, Feb, Mar, May, Nov, Dec
	Kitsap Memorial	360-779-3205	NO OPENINGS

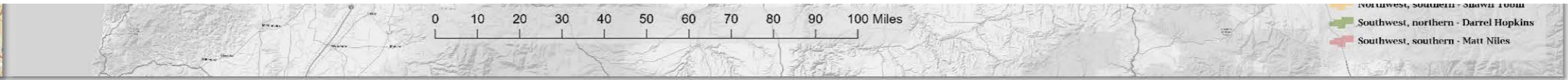
	Manchester	360-871-4065	NO OPENINGS
	Scenic Beach	360-830-5079	Apr, Jul, Aug, Oct, Nov, Dec
Olympic Peninsula Area	Bogachiel	360-374-6356	Jan, Feb, Mar, Apr, Nov, Dec
	Dosewallips (2 sites)	360-796-4415	Jan, Mar, May, Jun
	Potlatch	360-877-5361	NO OPENINGS
	Sequim Bay - Campground	360-683-4235	Feb, Aug, Oct, Nov, Dec
	Sequim Bay - Ramblewood Retreat Center	360-683-4235	Apr, May, Jun, Jul, Oct, Nov, Dec
Olympic View Area	Anderson Lake (Day Use Park)	360-385-1259	NO OPENINGS
	Fort Flagler - Campground (3 sites)	360-385-1259	Apr
	Fort Flagler - Interpretive Tours	360-385-1259	May
	Fort Flagler - Museum (2 sites)	360-385-1259	Jul, Oct
	Fort Worden - Upper Forest Campground	360-344-4402	NO OPENINGS
	Fort Worden - Lower Beach Campground	360-344-4402	NO OPENINGS
	Fort Worden - Commanding Officer's Quarters Museum	360-344-4402	NO OPENINGS
	Fort Worden - Coast Artillery Museum (Interpretive)	360-344-4402	Jan, Feb, Mar, Apr, May, Jun, Oct, Nov, Dec
	Fort Worden - Visitor Center Information		NOT AVAILABLE IN 2025
South Sound Area	Mystery Bay (Marine Park - Moorage Only)	360-385-1259	Mar, Apr, May, Jun, Jul, Aug, Sep, Oct
	Belfair (4 sites)	360-275-0668	Feb, Mar, Apr, May, Jun, Aug, Sep, Oct
	Jarrell Cove	360-426-9226	NO OPENINGS
	Joemma Beach	253-884-1944	NO OPENINGS
	Penrose Point	253-884-2514	Mar, Apr
	Twanoh	360-275-2222	Jan, Apr, Sep
<b>SW REGION - SOUTH</b>			
<b>MANAGEMENT AREA</b>	<b>PARK</b>	<b>CONTACT NUMBER</b>	<b>2025</b>
Battle Ground	Battle Ground Lake	360-263-2350	Mar, May, Oct, Nov, Dec
	Paradise Point	360-263-2350	Jul, Nov, Dec
Long Beach	Cape Disappointment - Campground (3 sites)	360-642-3078	Jan, Feb, Mar, Apr, May, Jun, Jul, Aug, Sep, Oct, Nov, Dec
	Cape Disappointment - Lewis & Clark Int Center (2)	360-642-3029	Nov, Dec
	Cape Disappointment - Fort Columbia Int Center (2)	360-642-3029	NO OPENINGS
	Cape Disappointment - North Head Lighthouse (2)	360-642-3029	May, Jul, Sep
Millersylvania	Millersylvania (2 sites)	<a href="mailto:skyler.penny@parks.wa.gov">skyler.penny@parks.wa.gov</a>	Jun, Jul, Aug, Sep, Nov, Dec
	Millersylvania ELC Retreat Center	<a href="mailto:skyler.penny@parks.wa.gov">skyler.penny@parks.wa.gov</a>	Jun, Sep
	Rainbow Falls	<a href="mailto:skyler.penny@parks.wa.gov">skyler.penny@parks.wa.gov</a>	Jan, May, Jun, Jul, Oct, Nov, Dec
Northern Shores	Lake Sylvia	360-249-3621	NO OPENINGS
	Ocean City	360-289-3553	Apr, May, Jun, Jul, Sep, Nov, Dec
	Pacific Beach	360-289-3553	Dec
	Schafer (2 sites)	360-249-3621	Feb, May, Jun, Jul, Aug, Sep, Oct, Nov, Dec
South Beach	Grayland Beach (2 sites)	360-268-9717	Mar, Apr, May, Jun, Jul, Aug, Nov, Dec
	Twin Harbors		CLOSED FOR 2025
Upper Cowlitz	Ike Kinswa (2 sites)	360-983-3402	Jul, Sep, Oct, Nov, Dec

Ike Kinswa (NEW- concession/day use/campground)	360-983-3402	May, Sep
Lewis and Clark Campground	360-864-2643	Apr, May, Jun, Jul, Sep
Lewis and Clark ELC	360-864-2643	May, Jun, Jul, Aug, Sep
Seaquest - Campground	360-644-5235	Mar, Apr, Aug, Sep, Oct, Nov, Dec
Seaquest - Yurt Village & Campground	360-644-5235	Jan, Feb, Mar, Apr, May, Sep, Oct, Nov, Dec
Seaquest - Mount St Helens Visitor Center/Campground	360-274-8633	Jan, Feb, Mar, Apr, Sep, Oct, Nov, Dec

# Current Park Management Areas

Published June 1, 2021





- Southwest, southern - Shawn Todd
- Southwest, northern - Darrel Hopkins
- Southwest, southern - Matt Niles