



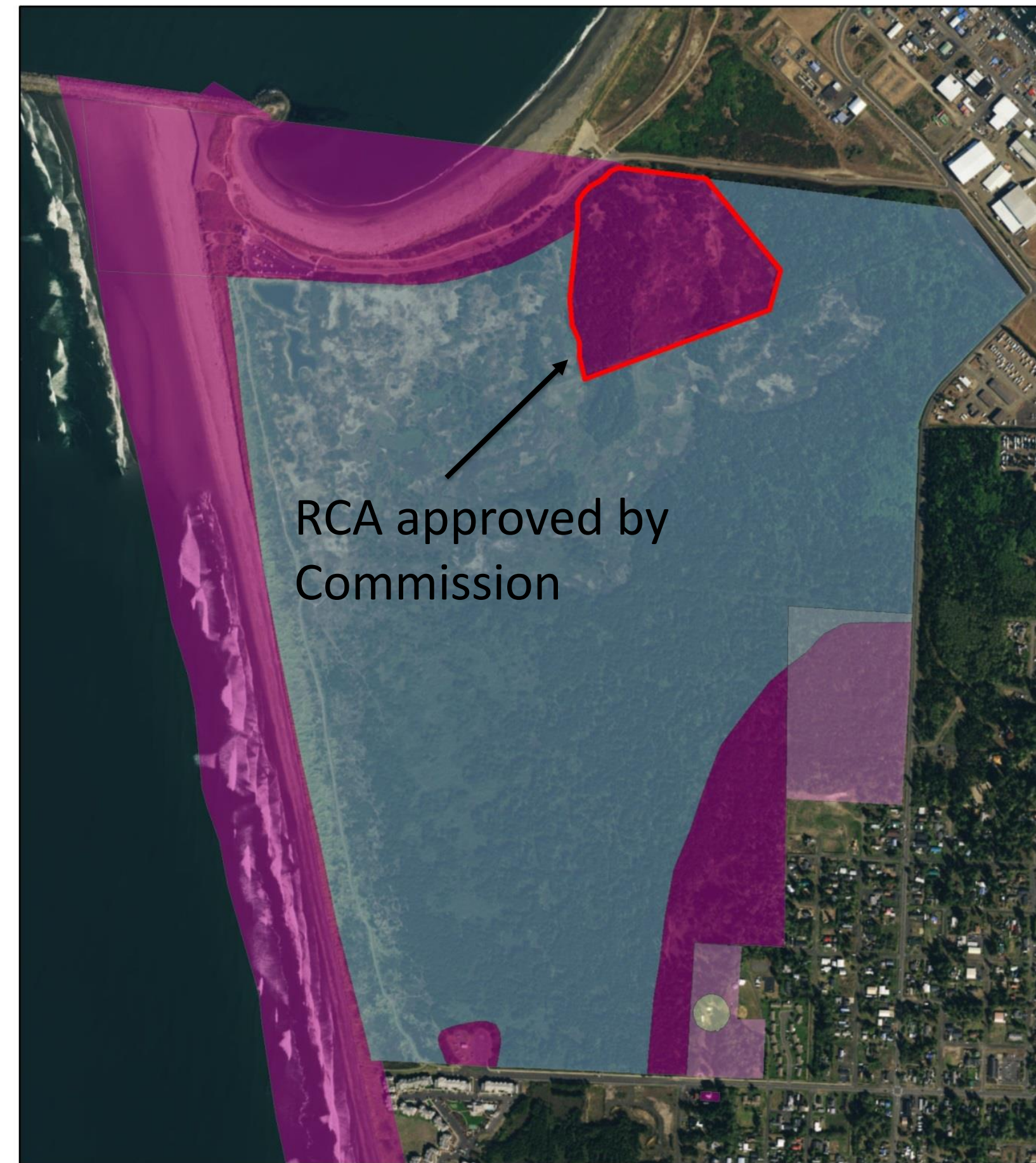
Westport Golf Links Update

November 13, 2024

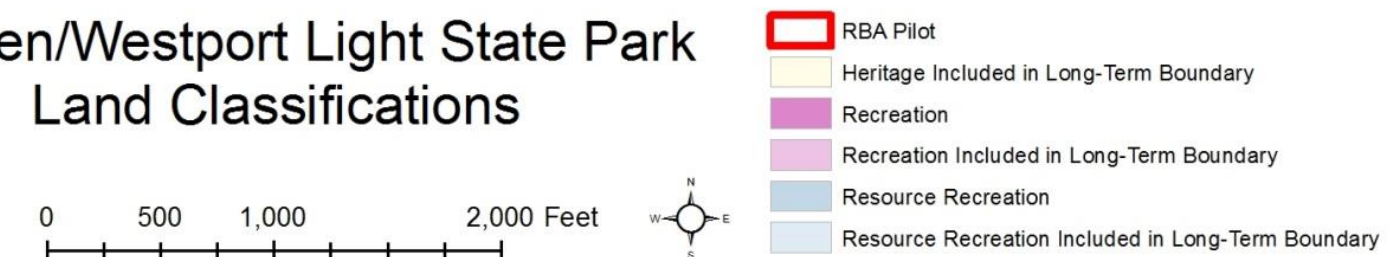


Recent History

- 2007 – Commission approved South Beach CAMP
- 2015 - Acquired 280 acres with WWRP grant
- 2016 – Commission designated 34-acre Recreation Concession Area at Westport Light State Park



Westhaven/Westport Light State Park
Land Classifications



Recent History

- 2020 – MOA with Westport Golf
 - “...enter into this MOA in good faith, recognizing the process will evolve with the need to adapt as circumstances change.”
 - Outlined master plan development and environmental review process and milestones
 - MOA now outdated. Updates initiated in 2023, but not yet executed



Review of November 2022 staff presentation

- Summary of baseline studies
- Permitting requirements
- Policy analysis



Environmental Baseline Studies




- Vegetation survey
- Habitat study
- Wetland delineation
- Hydrologic study
- Coastal study
- Restoration feasibility






Sitka spruce – lodgepole pine/salal – evergreen huckleberry forest at Westport Light (State threatened)



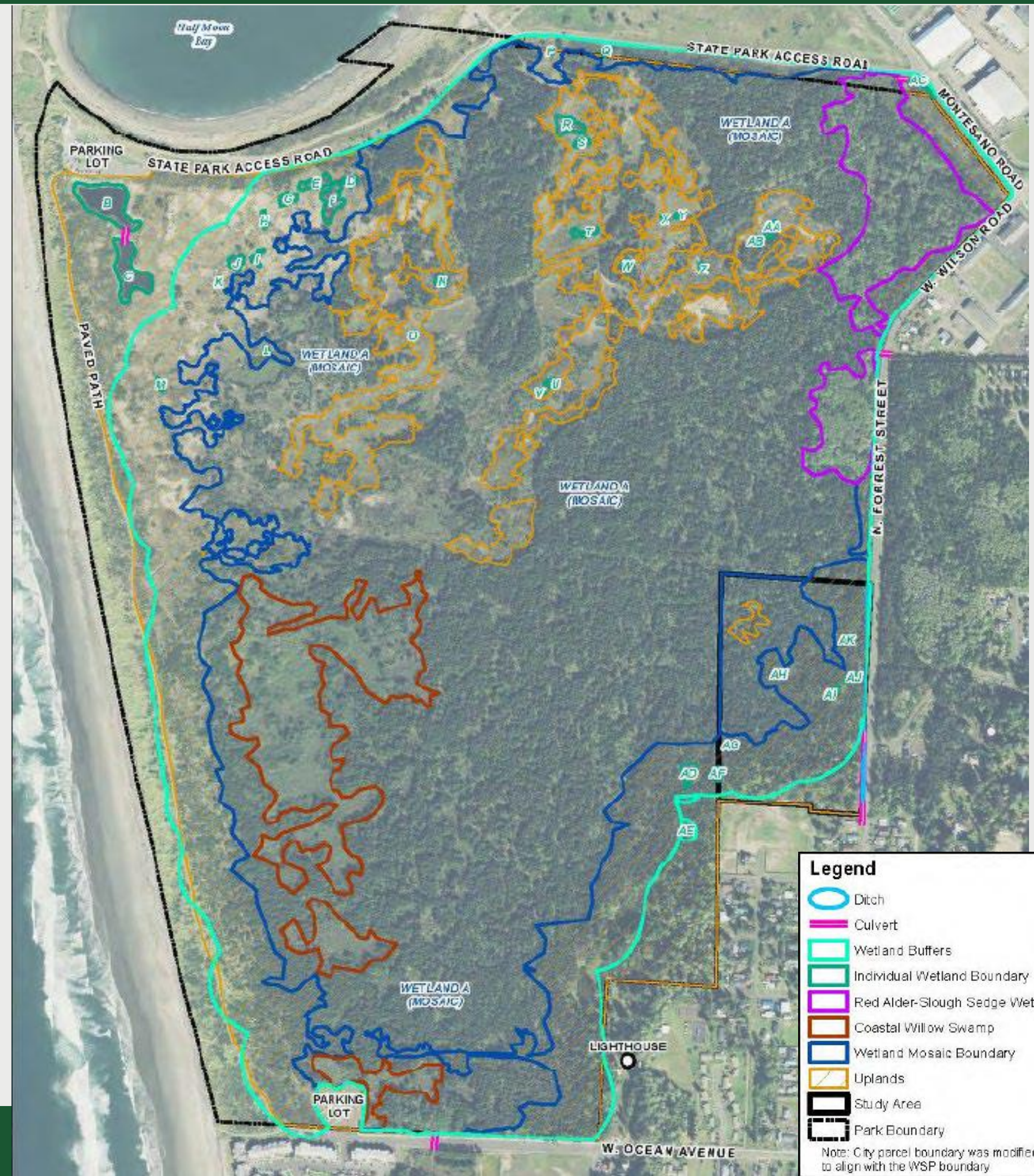
Wetlands

-  uplands
-  2 non-jurisdictional ponds
-  34 Category III & IV wetlands

Category I Interdunal wetland, 395 acres

-  Mosaic wetland 346 acres
-  Red alder/slough sedge swamp, 21 acres
-  Willow swamp, 28 acres

 Wetland buffers



Legend

-  Ditch
-  Culvert
-  Wetland Buffers
-  Individual Wetland Boundary
-  Red Alder-Slough Sedge Wetland
-  Coastal Willow Swamp
-  Wetland Mosaic Boundary
-  Uplands
-  Study Area
- Park Boundary

Note: City parcel boundary was modified to align with the WSP boundary

Policy 73-04-1 Natural Resources

“State Parks recognizes that rivers, streams, and wetlands within the lands it manages are part of larger watersheds, and as such, the agency will help to protect these habitats by minimizing functional impacts to them and the processes they perform.”



Policy 73-03-1 Critical Areas

“New park facility developments shall not be built in critical areas except where the theme, character, quality or other park planning provides overriding justification for development in such areas, and appropriate mitigation can be provided.”



Climate Change Resolution

“NOW AND THEREFORE BE IT RESOLVED that the Washington State Parks and Recreation Commission hereby directs that actions taken at all levels of the agency shall be evaluated in the context of climate change...”



Process changes since 2022

- City of Westport nominal lead for SEPA (EIS)
- Project proponent to get permits *before* Commission decision



Efforts Currently Underway

- Lawsuit response
- City of Westport SMP update



Efforts Currently Underway

- Review of preliminary Draft EIS



Questions?

