



**Washington State Parks &  
Recreation Commission**

# **Mount Spokane Master Plan Update**

***Presented by: Melinda Wolfman & Paul Knowles  
November 13, 2024***









# Integrated Master Plan Evolution

- Trail plan kickoff – June 2023
- Tribal engagement – Oct 2023
- Stakeholder interviews – Jan 2024
- Background research documentation
- Planning capacity shifted – Mar 2024
- Combined project scope – April 2024



# Master Plan Issues

Natural  
resource  
protection

Inclusivity and  
access

Climate

Infrastructure  
Limitations &  
Capacity

Bear Creek  
Lodge

Land  
Classifications

Long-term  
Boundary

MS 2000 Concession  
Agreement

Downhill Ski  
Area

Trails – Summer  
Use

Trails – Winter  
Use

Overnight  
Accommodations

Trailheads

Snowmobiling

Mountain Biking

Nordic Ski Area





# Master Plan Product

- 20-year vision for the park
  - Bear Creek Lodge and
  - Downhill Ski Area
- Trail Plan
- Facility and Built Environment Plan
- Land classification and long-term boundary
- Management and Implementation Plan
  - Phasing
  - Funding program
  - Programmatic implementation





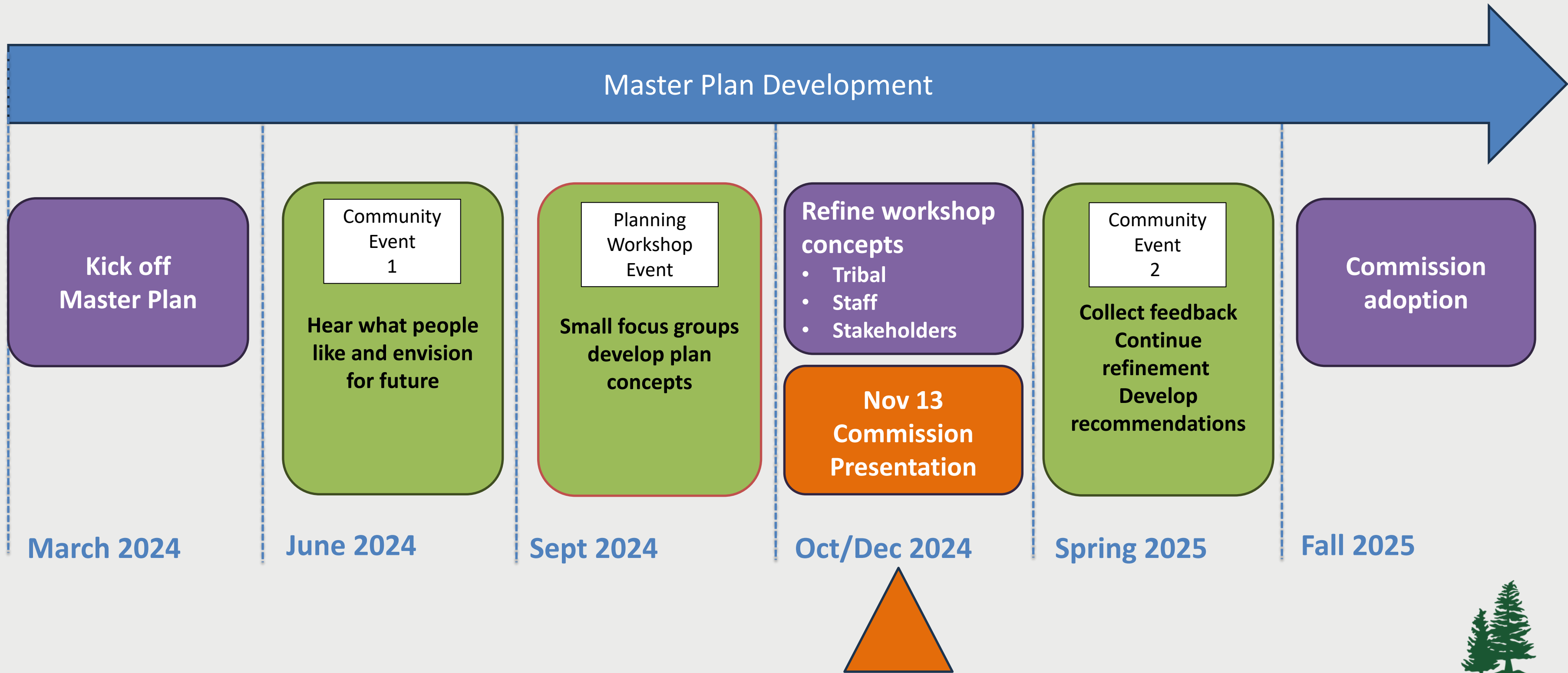
# Other outcomes

- MS2000 concession agreement
- Telecommunication towers
  - Inventory and lease status
  - Lessee engagement
  - Tribal engagement
- Informs broader agency policy





# Master Plan Timeline





# Engagement strategy

- Tribal
- Underrepresented communities
- Stakeholders
- General public
- Internal staff





# June 1 community event

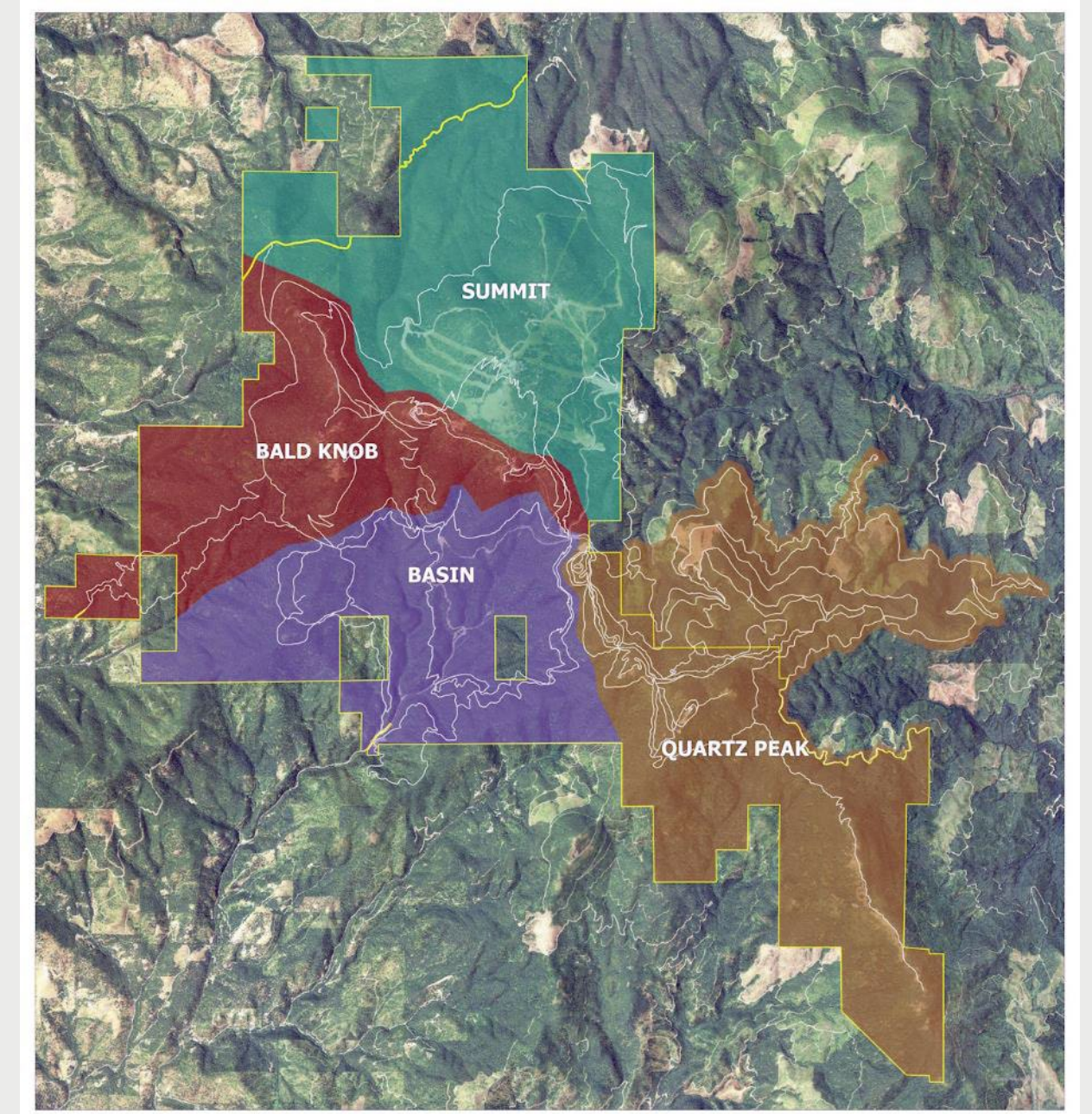
- Community venue
- Engaging format
- 17 tables
  - External
  - Internal
  - Kids activity table
- 60+ attendees





# Sept 28 Workshop

- All-day interactive at Bear Creek Lodge
- 36 participants
- Orientation meetings
- Focus areas
- Workgroup products





# Focus Area Assignments

- Park vision
- Overnight accommodations
- Trails – improvements, new trails, single vs. multi-use, where to provide entry-level experiences
- Circulation, parking and use distribution
- Integrated park experience – signage, way-finding, other
- Long-term boundary and land classification





# Focus Area Assignments by Area

Focus Area	Topics / Features
Basin	<ul style="list-style-type: none"><li>• Park entrance and gateway</li><li>• Bear Creek Lodge</li><li>• Tubing hill</li><li>• Snowmobiling</li></ul>
Summit	<ul style="list-style-type: none"><li>• Downhill ski area</li><li>• Vista House</li><li>• Summit road</li></ul>
Bald Knob	<ul style="list-style-type: none"><li>• CCC Heritage area</li><li>• Bald Knob day use and campground</li></ul>
Quartz Peak	<ul style="list-style-type: none"><li>• Selkirk Lodge</li><li>• Overnight accommodations</li></ul>







# Focus Area Highlights





# Summit Focus Area

- Modernize the Vista House if practical, offer more events and year-round access
- Consider Summit Road closure, if there are other options for getting to the summit
- Improve parking area for downhill area
- Add uphill lift capabilities for summer access
- New MTB trails





# Bald Knob Focus Area

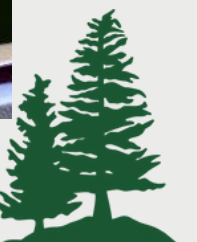
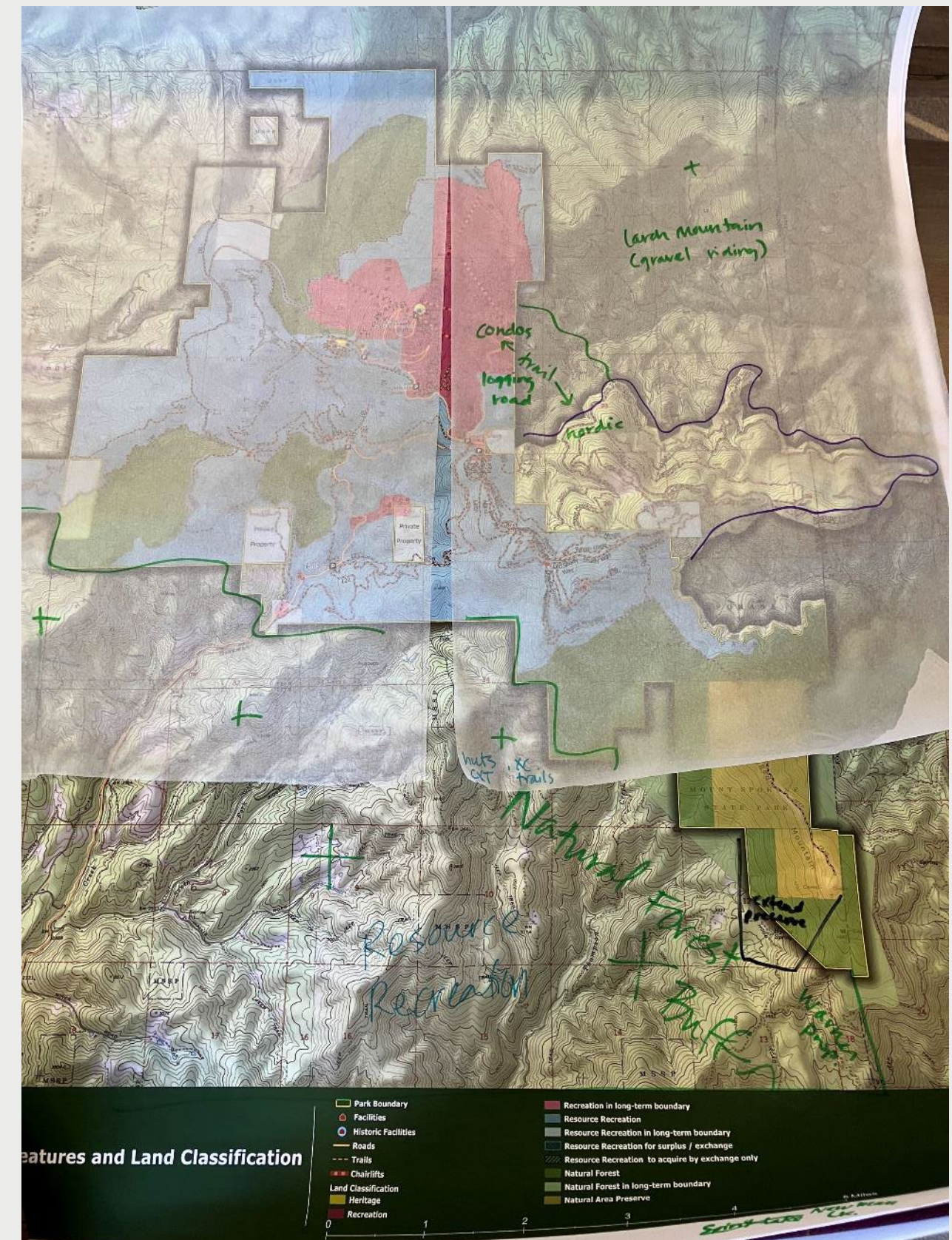
- Bald Knob camping expansion
- Improve viewshed
- Improve wayfinding signage
- Integrate CCC Heritage area
- Develop Day Road trailhead and parking
- Expand access and parking
- Develop interpretive, accessible trail





# Quartz Focus Area

- Modestly modernize Selkirk Lodge
- Include entirety of Nordic trail system in long-term boundary
- Develop new single track multi-use trail
- Develop backpacking, tent sites at Eagle Crest near NOVA hut





# Basin Focus Area

- Improve trail connectivity
- Retain tubing hill with improved safety
- Gateway development
- Bear Creek Lodge
  - Visitor and interpretive center
  - Quick food service
  - Rental shop
  - Group/special event overnight





# Park-Wide Suggestions

- Trail naming convention
- Trail signage and enhanced visitor information
- Alternative transportation options





# Next Steps

- Develop a draft product
- Review with:
  - Project team
  - Tribes
  - Stakeholders & public
- MS 2000 and Telecom towers
- Community Event 2 – spring 2025







# Questions?

