



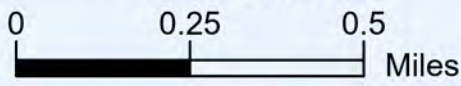
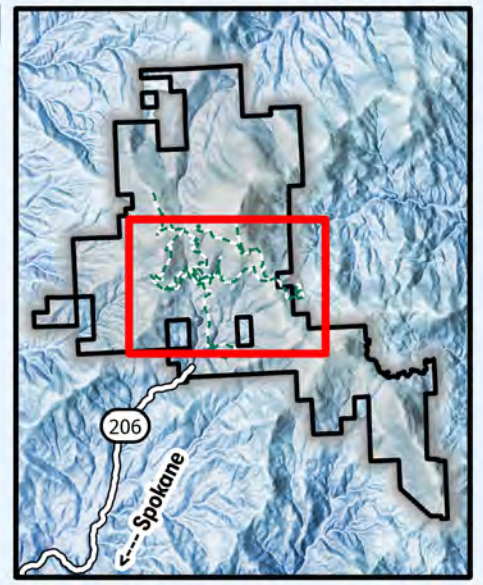
Mount Spokane State Park Snowshoeing

- Parking**
- Restroom**
- Lodge**
- Shelter**

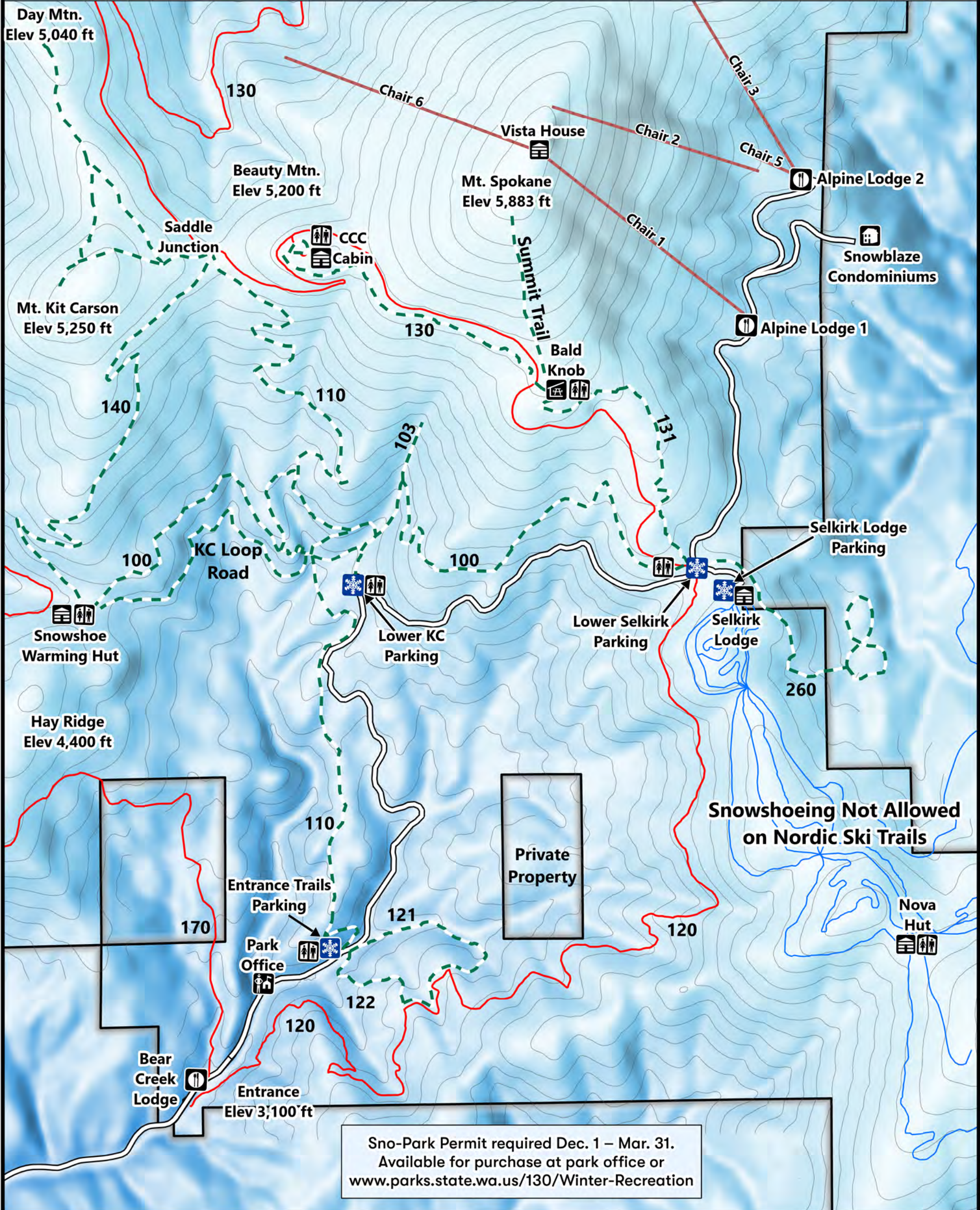
Snowshoe trails are not groomed, and varied snow conditions can make snowshoeing challenging. Please plan accordingly, and have a safe winter experience.

Be aware of potential avalanche danger, check www.nwac.us before you leave home.

Trail grooming schedules and maps at www.parks.wa.gov/winter
Please report errors or comments to: winter@parks.wa.gov



For Emergency Call 911
Spokane Co. Sheriff 509-456-2233.



Sno-Park Permit required Dec. 1 – Mar. 31.
Available for purchase at park office or www.parks.state.wa.us/130/Winter-Recreation