

An approximate 17-mile groomed trail is available for touring in the park, as well as a play area that reaches the summit. Take a break and get warm at the historic civilian conservation corps cabin. Snowmobiles are only allowed in designated areas of the park. Snowmobiles, snow bikes and tracked all-terrain vehicles must be registered.

**Snowmobiling**

The popularity of snowshoeing has exploded in recent years, and there are a variety of ungroomed trails to explore. Snowshoeing is prohibited in the Alpine and Nordic areas.

**Snowshoeing**

Trails begin at the Selkirk Lodge and include close to 40 miles of professionally groomed trails. Warming huts at Selkirk Lodge and the Nova Hut provide picnic tables, a wood stove and restrooms. Snowshoeing, snowmobiles, hiking and pets are not allowed on these trails. Nordic trails are groomed Thursdays through Mondays, weather permitting.

**Nordic Skiing**

Backcountry and uphill skiing are allowed in the park; visit [mtspokane.com](http://mtspokane.com) for current uphill travel policy within the Alpine area.

**Alpine Skiing**

The Mt Spokane Ski & Snowboard Park features over 1,700 acres with 52 trails, six chair lifts and a vertical drop of 265 feet. For the most current snow reports and conditions, visit [mtspokane.com](http://mtspokane.com) or call 509-238-2220. During winter, driving can be challenging, so be sure to be prepared with good traction tires and tire chains. A Sno-Park Permit is required in the winter for park use. Parking at the Alpine area is included with the purchase of a lift ticket.

**WINTER RECREATION**



During the summer, drive the Summit Road to enjoy spectacular views of the surrounding area. Make sure to check out the historic Vista House while at the summit. If an overnight stay interests you, backpackers can rent the Quartz Mountain Fire Lookout. If backpacking isn't your style, you can still enjoy the Bald Knob Campground (no RV hook-ups), which is open from mid-June to September. Hikers, mountain bikers and horseback riders may use all park trails except where signed. Trails may be closed temporarily due to erosion or wildlife concerns. The Natural Area Preserve on Ragged Ridge is open for pedestrian use only. Remember to stay on the designated trail to preserve the area.

**SUMMER RECREATION**

Mount Spokane State Park is located 15 miles east of US Highway 2 at the end of State Road 206 in northeast Spokane County. Mount Spokane is a 14,000-acre park with an incredible variety of wildlife, such as moose, cougars, coyotes, deer and black bear. The mixed varietal forest provides tremendous year-round scenery.



All trails are multi-use during the summer season, except where signed. Stop by the Ranger Station at the park entrance for maps and current trail conditions. Maps are also located at each of the parking area kiosks. Wonderful hikes are available from each of our parking areas. A Discover Pass is required to park.

**TRAILS**

**WELCOME TO MOUNT SPOKANE STATE PARK**



**WASHINGTON STATE PARKS**

**MOUNT SPOKANE STATE PARK**



26107 N. Mount Spokane Park Dr.  
Mead, WA 99021  
509-238-4258

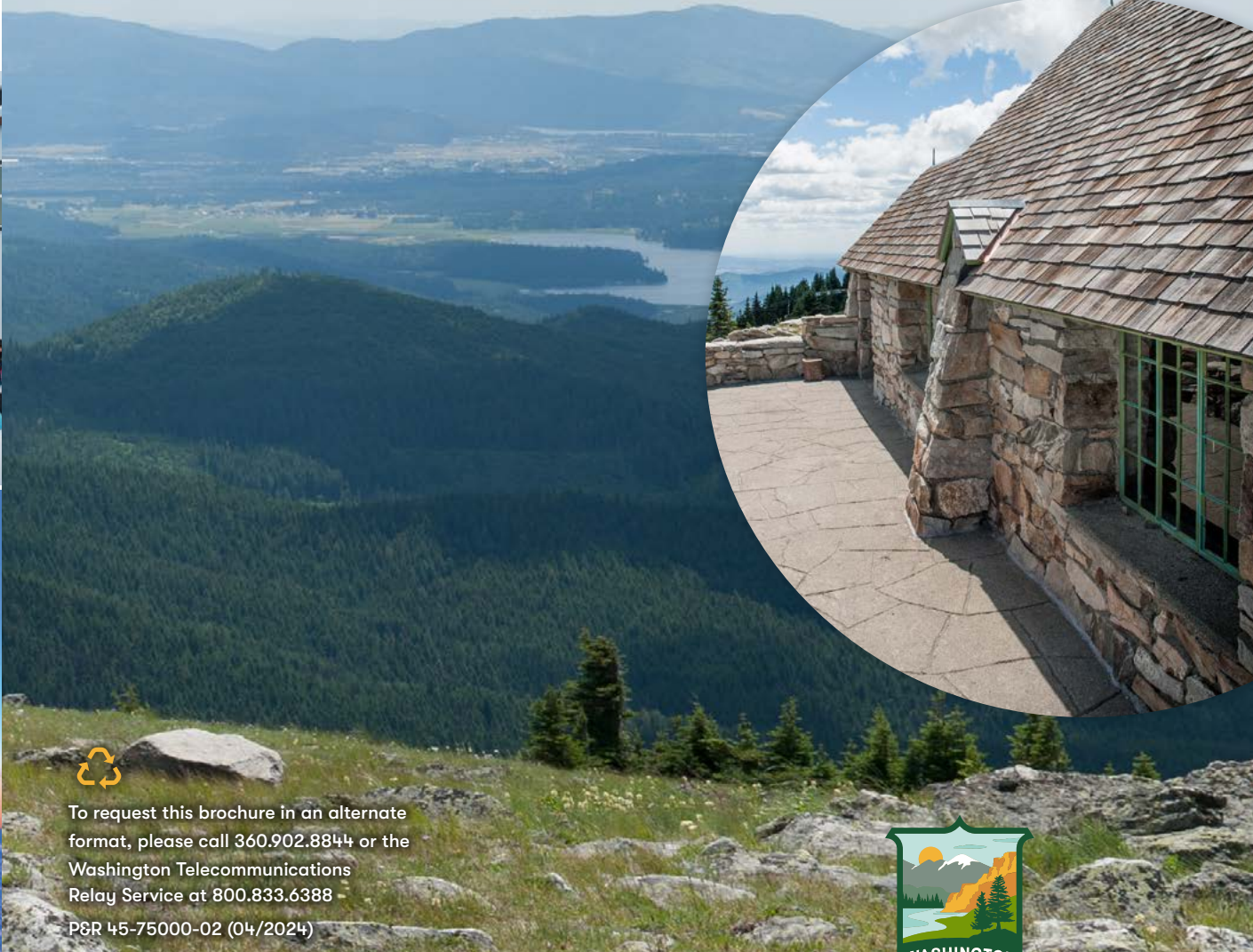
**RESERVATIONS**

Online at [parks.wa.gov](http://parks.wa.gov) or call 888.CAMPOUT

**STATE PARKS NEARBY RIVERSIDE**

**THINGS TO REMEMBER**

- Park hours are 6:30 a.m. to dusk.
- Winter hours are 7 a.m. to 10 p.m.
- Wildlife, plants and all park buildings, signs, tables and other structures are protected; removal or damage of any kind is prohibited.
- Hunting, feeding of wildlife and gathering firewood on state park property is prohibited.
- Pets must be on leash and under physical control at all times. This includes trail areas and campsites. Pet owners must clean up after pets on all state park lands.



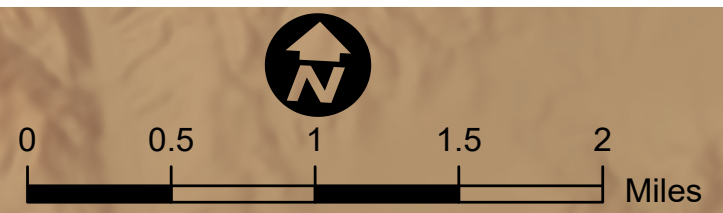
To request this brochure in an alternate format, please call 360.902.8844 or the Washington Telecommunications Relay Service at 800.833.6388

P&R 45-75000-02 (04/2024)

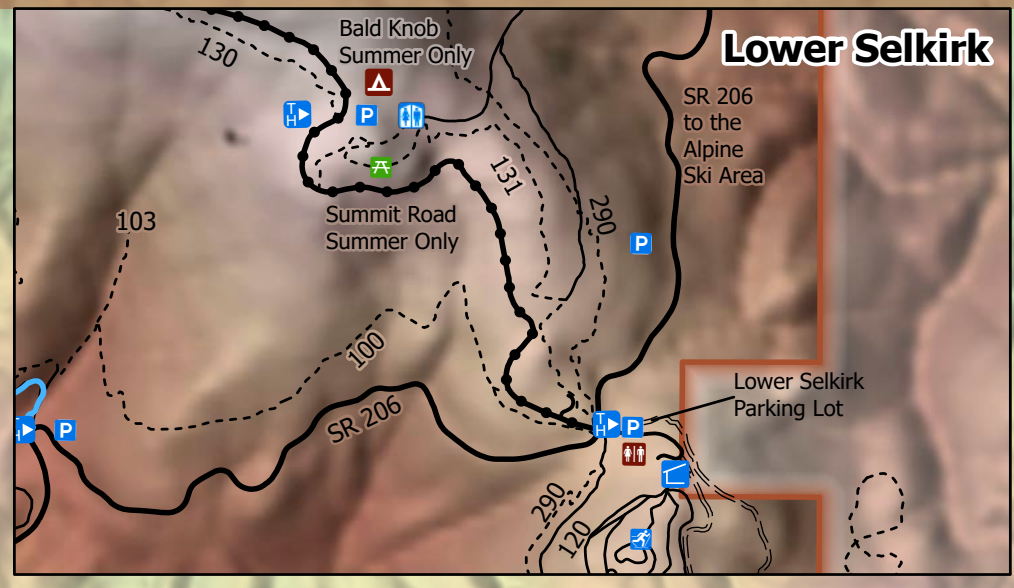
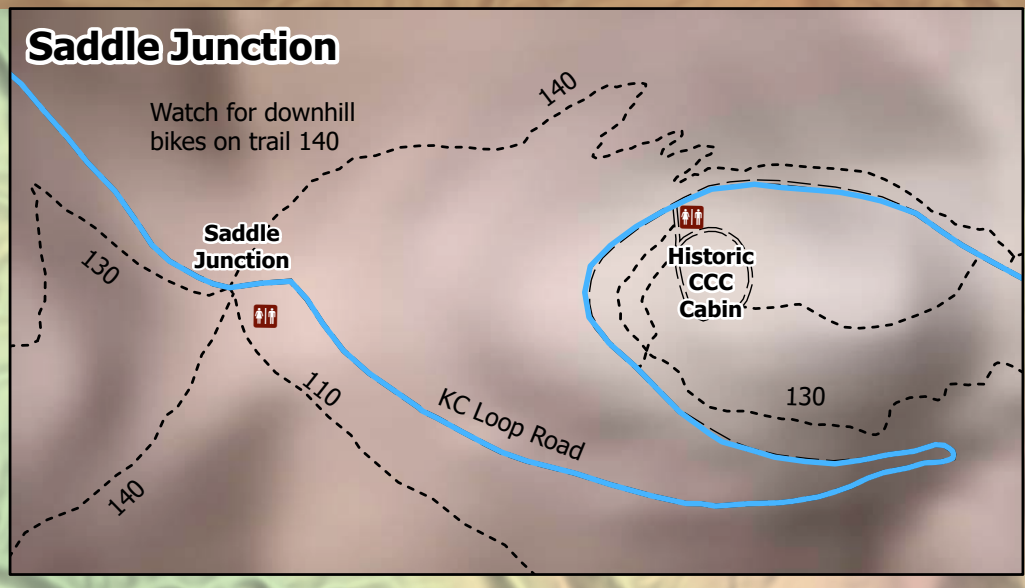


# Mount Spokane State Park

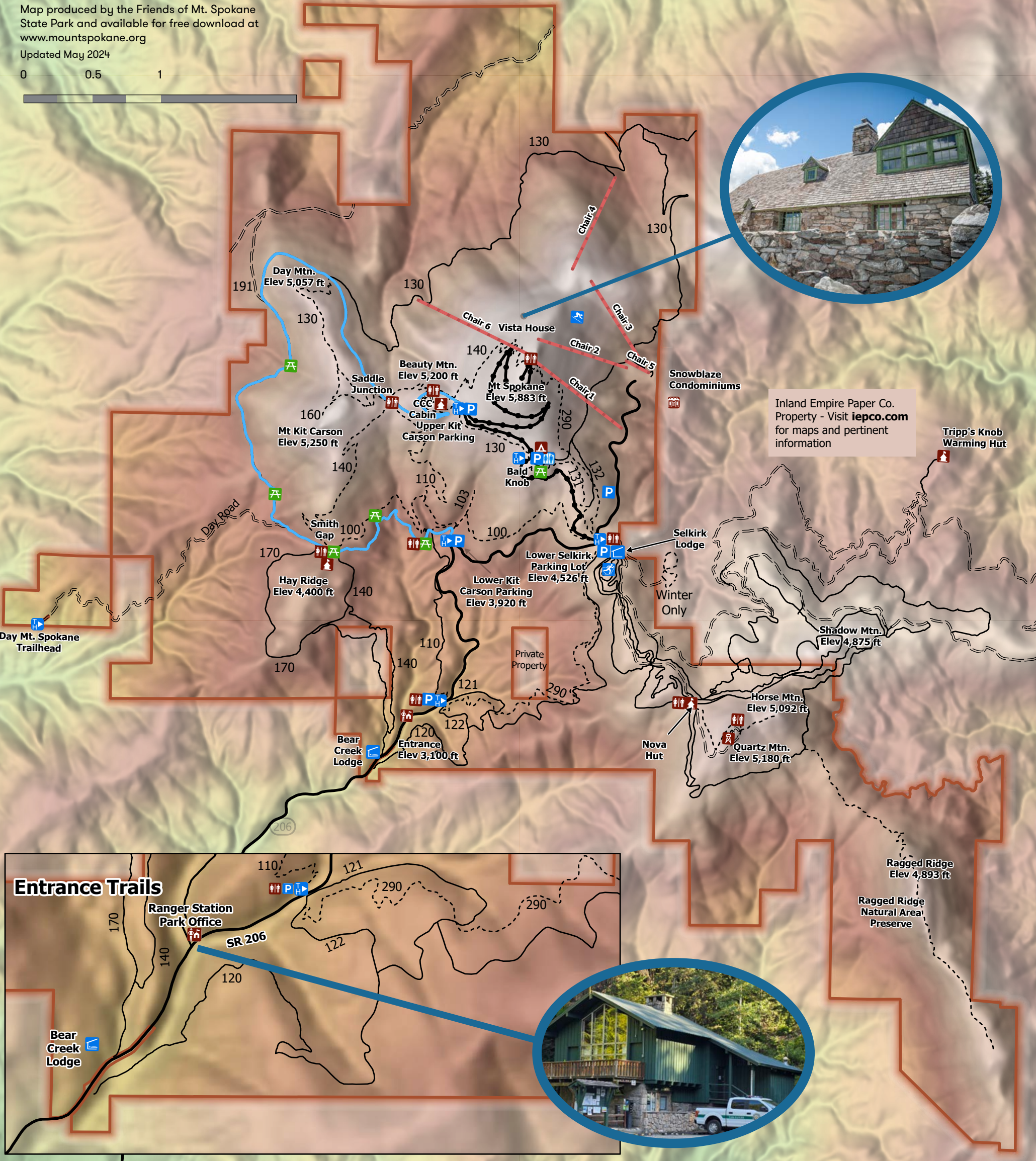
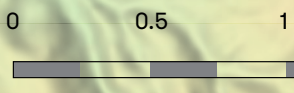
- Trailhead
- Quartz Mountain Lookout
- Park Office
- Warming Hut
- Picnic Area
- Parking
- Restroom
- Pit Toilet
- Downhill Skiing Area
- Nordic Skiing Area
- Campground
- Lodge
- Summer Summit Road (paved)
- Kit Carson Loop Road
- Paved Road
- Dirt Road
- Fire Road
- Single Track
- Park Boundary



Map produced by WA State Parks and Friends of Mt. Spokane State Park  
Available for free download at [www.mountspokane.org](http://www.mountspokane.org)  
June 2024



Map produced by the Friends of Mt. Spokane State Park and available for free download at [www.mountspokane.org](http://www.mountspokane.org)  
Updated May 2024



Inland Empire Paper Co. Property - Visit [iepc.com](http://iepc.com) for maps and pertinent information

