



Commission Meeting July 18, 2024

Item E-10

Palouse to Cascades State Park Trail – Ellensburg - Easements for Public Road and Utility Crossings – Report

Presented by:

Tammy Ferguson
Property and Acquisition Specialist
Real Estate Program





Supporting Priorities

Strategic Goal Alignment

Develop new parks and amenities and improve trails and park services that meet the needs of growing and increasingly diverse population;

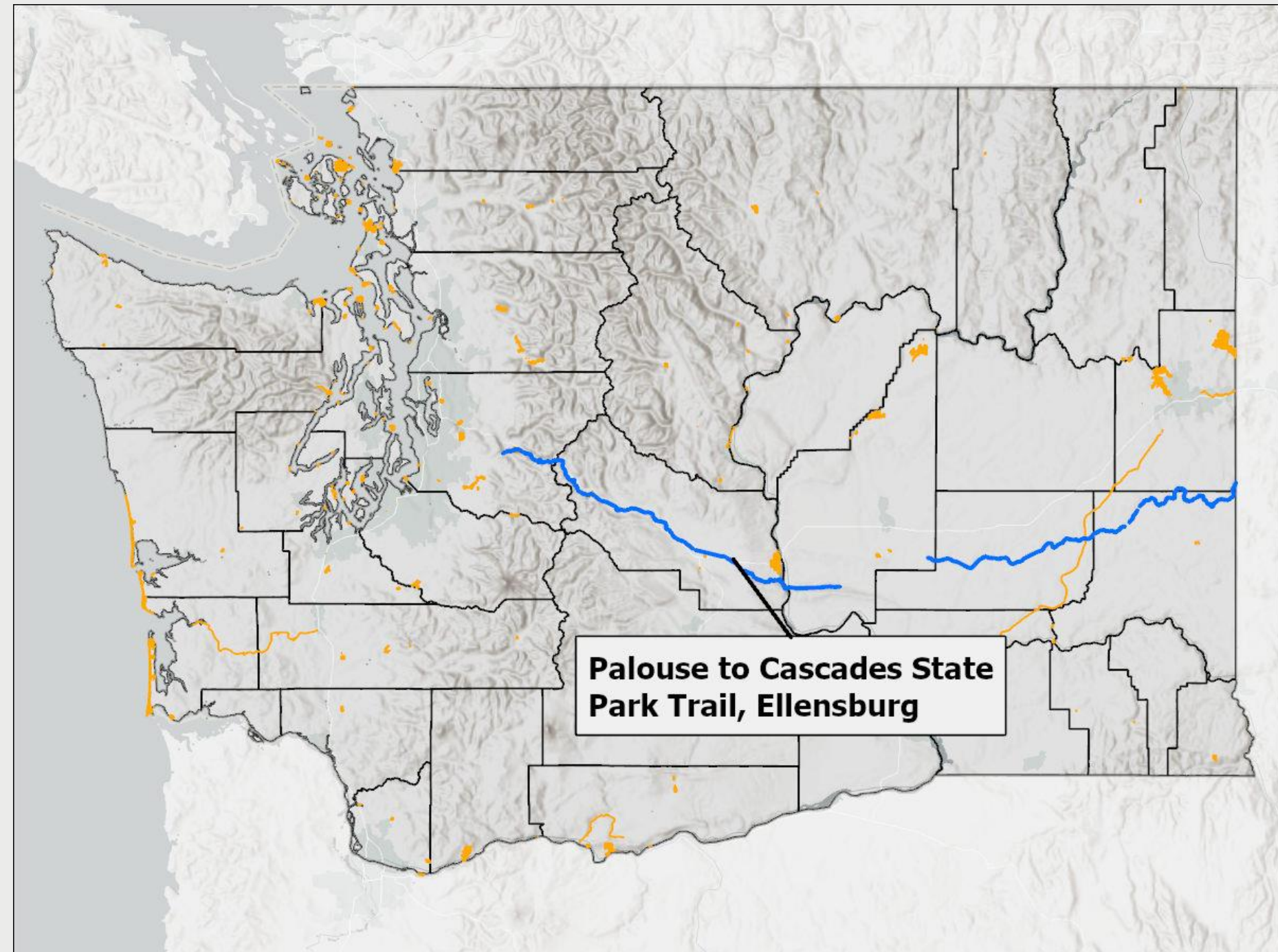
Increase outreach to trail users, improve trail conditions, build relationships with trail neighbors and engage partners to improve mobility and connections between communities.”



Palouse to Cascades State Park Trail Overview

287-Mile Cross State Trail
(Cedar Falls to Idaho Border)

- Biking
- Bird Watching
- Camping
- Fishing
- Geocaching
- Hiking
- Walking

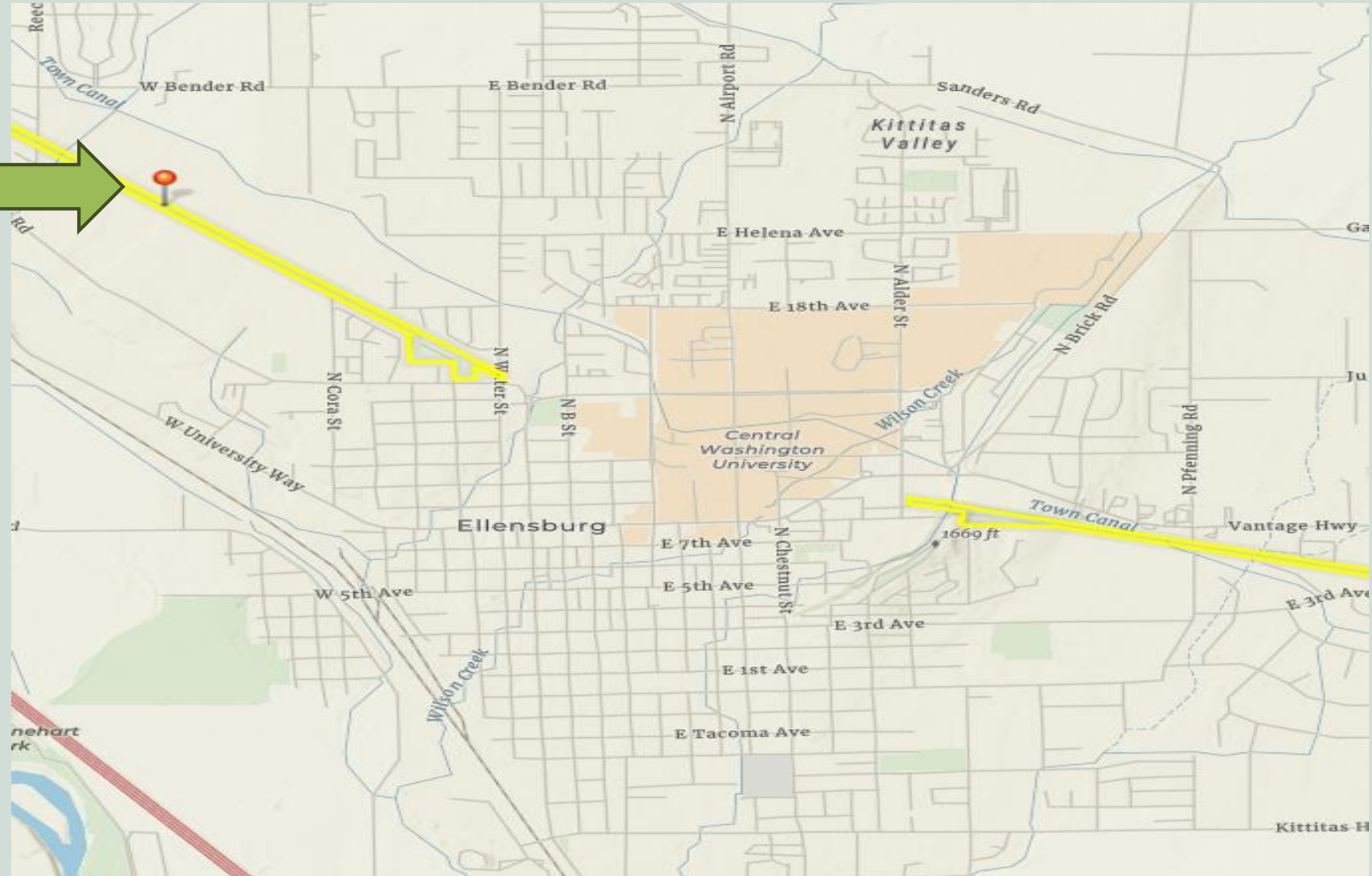




Palouse to Cascades State Park Trail

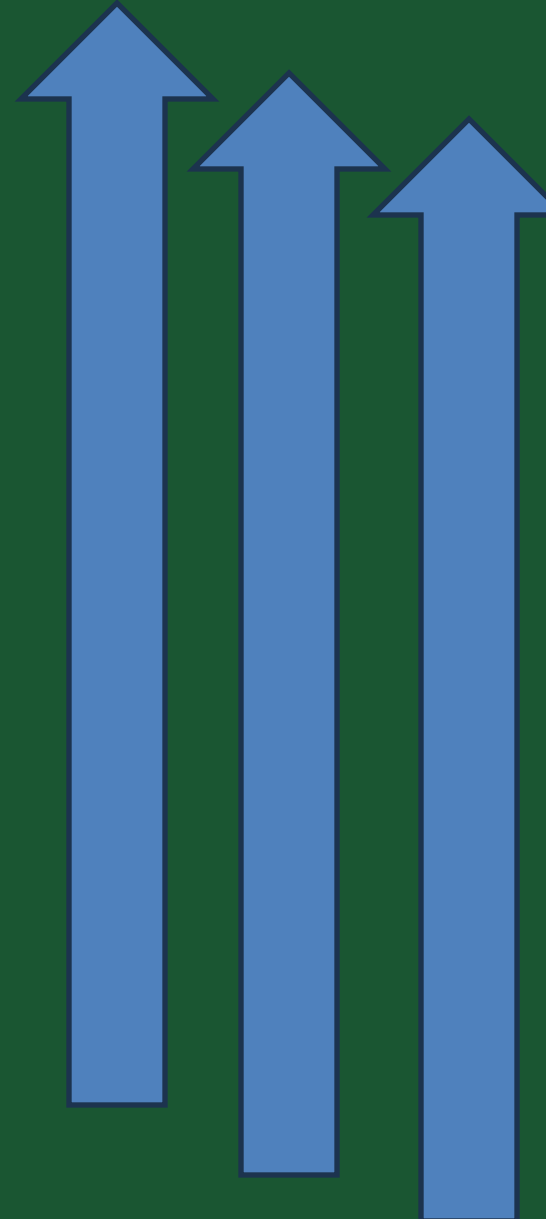
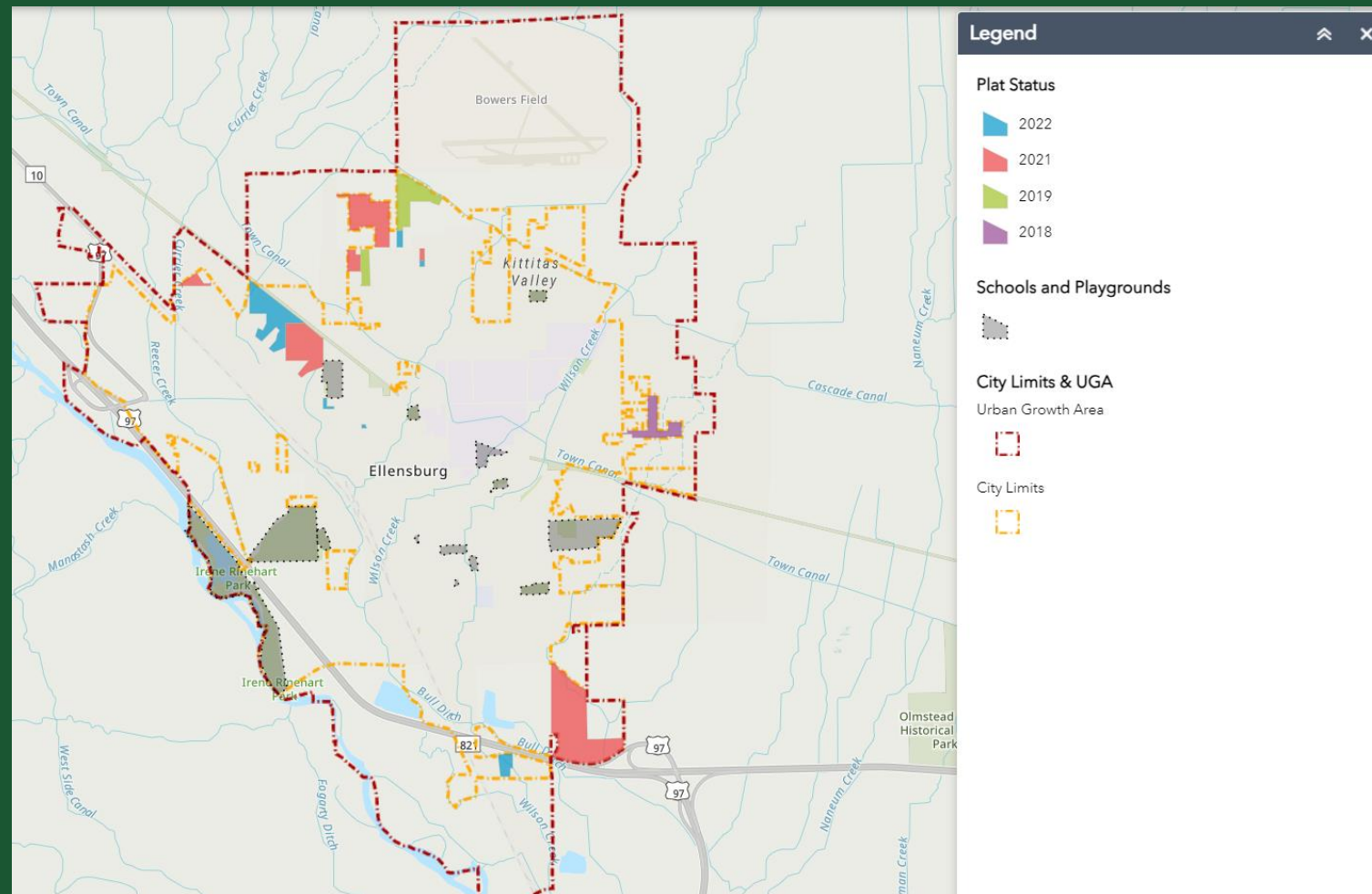
City of Ellensburg

Foster Development
Proposed Trail Crossing





Significant Background



Expansion in Ellensburg

- ✓ Steady increase in development
- ✓ Population Growth
- ✓ Job opportunities
- ✓ Educational Institutions



City of Ellensburg

Comprehensive Plan

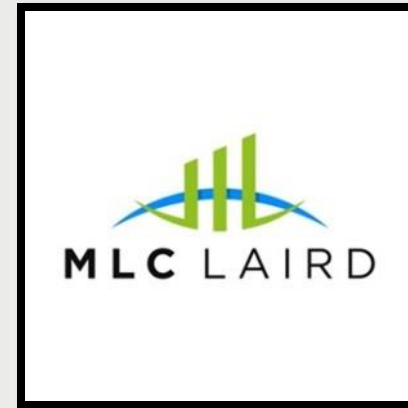
Adopted in 2008
Long Term Vision – Development
20 Years
Land Utilization
Public Amenities
Roads and Infrastructure
Zoning



ABOUT|Project Proponent

MLC Laird Holdings II LLC

St. James Group



PARTNERS



Shawn Milligan



Kelly Foster



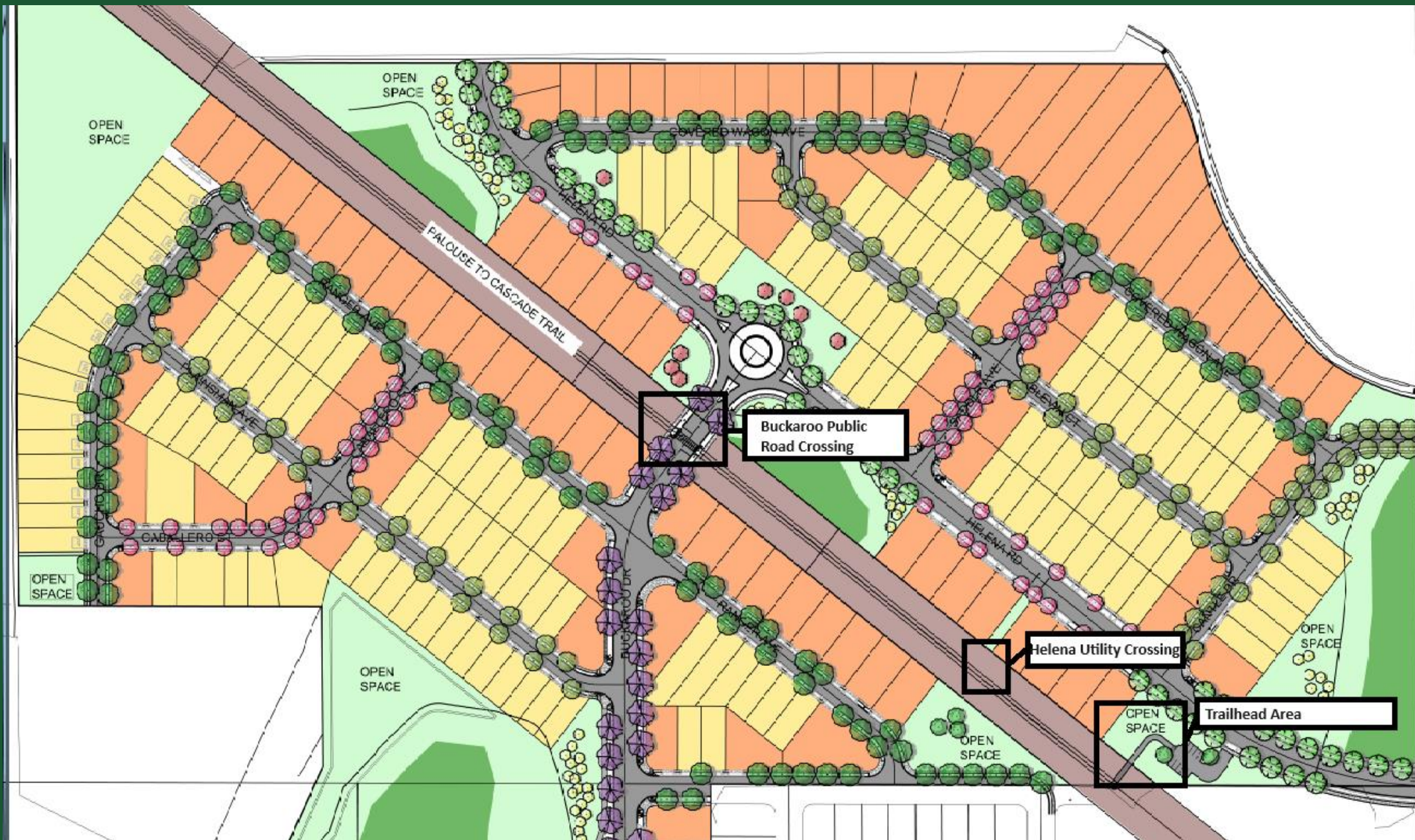
Will La Herran

- **20 Years Experience**
- **Creation Of Long-term Value**
- **Single Family, Build For Rent And Multi Family**
- **Benefit Local Community**
- **Projects In Eight States With Primary Focus On Washington**



PROPOSED PROJECT

- One (1) public road crossing
- One (1) utility crossing
- 265 parcels
- Helena Crossing Trailhead



Public Road Crossing Buckaroo

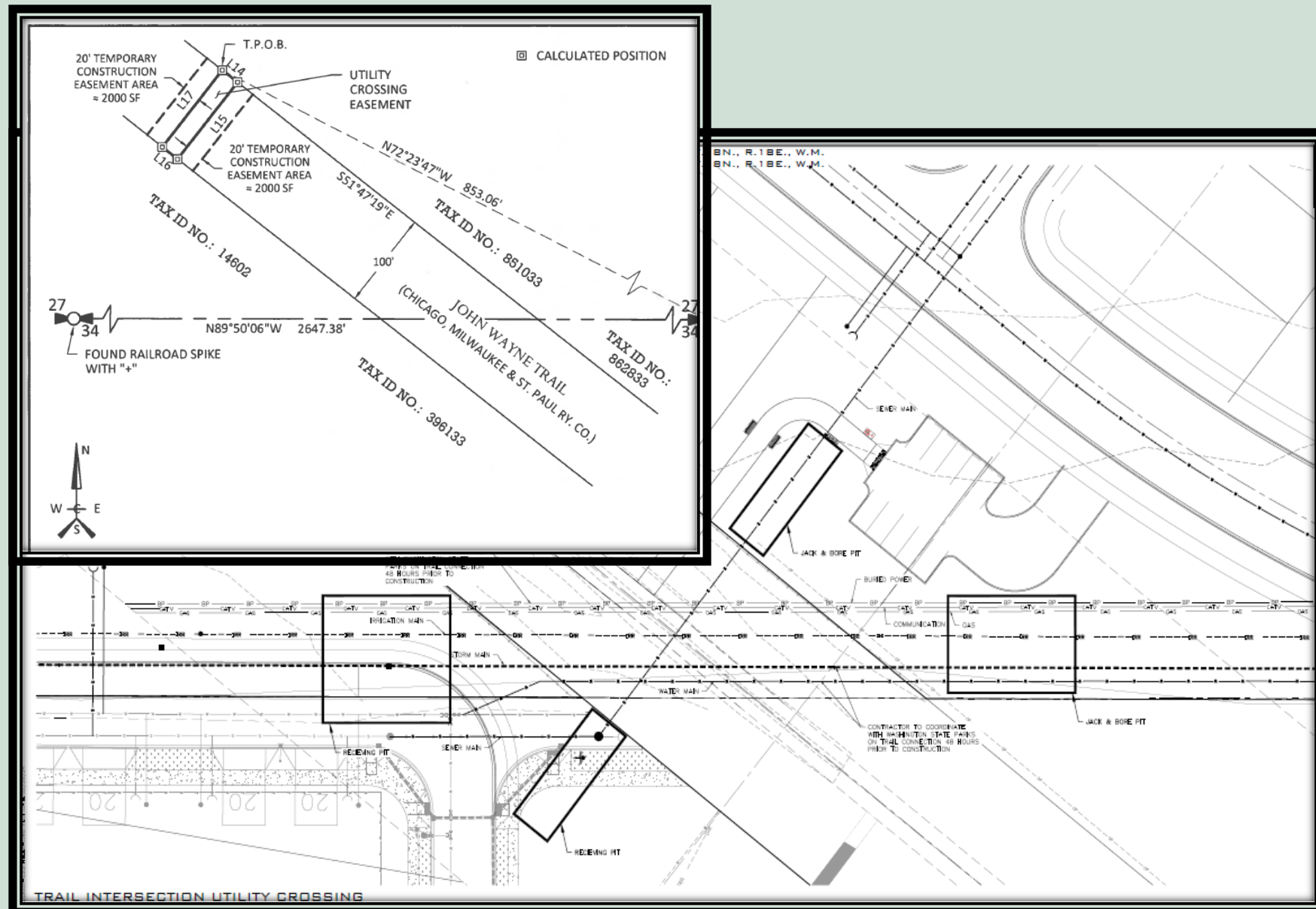


- City of Ellensburg Street Light with cutoff
- Flashing Beacon – solar power
- Crosswalk lines per WSDOT standard
- Concreate walkway
- Pedestrian ramp
- Street Sign
- Pedestrian crossing signs
- Stop bars
- Underground Utilities



Utility Crossing Helena Avenue

- Jack and bore method under the trail
- Minimize ground disturbance
- Water, sewer, power, communications, irrigation and storm



Helena Trailhead Helena Avenue



- ✓ .65 of an acre
- ✓ Located off of Helena Avenue
- ✓ Dedicated to Parks
- ✓ Bike rack
- ✓ 10 parking spaces (parking lot)
- ✓ Potential for future utilities, fitted gate (closed hours),
- ✓ Picnic bench area



Restrictions

- Commission Real Estate Policy 25-07-1 delegated director approval – permitted use affects the natural park resources and must be approved by the commission.
- Commission Real Estate Policy 25-07-1 delegated director approval – easements – project does not fit criteria Section 4. A-D.



Public Input

- Real property agreements do not typically include a public input process, but a mailing was completed prior to this Commission Report.
- Public comment will be incorporated when this item is brought to the Commission for a requested action.
- Parks included trail user groups.



Next Steps

- Continued Tribal Outreach
- Continued Public Outreach
- Requested Action in October



Questions?



Thank you

Mailing Address

1111 Israel Rd., Tumwater WA 98501

Email address:

Tammy.Ferguson@parks.wa.gov

Phone Number

360.902.8645

