



# Item E-3: Sale of Excess Timber from Forest Health Treatments

Presented by  
David Cass, Agency Forester



# Resource Sales and Leases

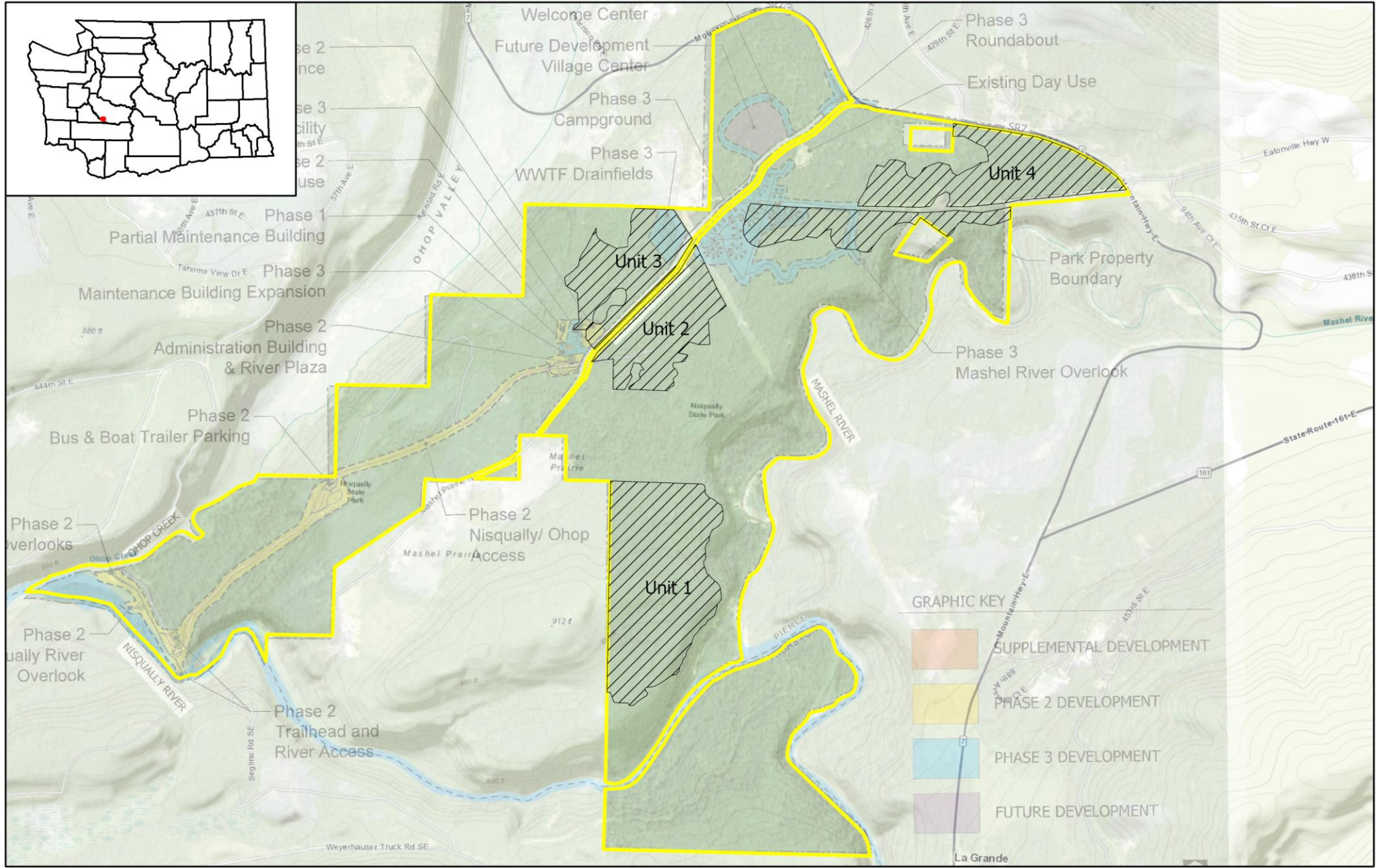
WAC 352-28-020(3) Sales of timber where the cruised volume of the timber is in excess of one million board-feet shall require approval by a majority of the commission.



# Nisqually State Park

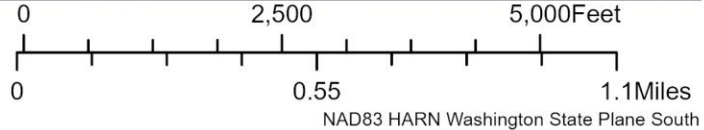
## Nisqually Forest Health Thinning Project Details

- 209 acres
- 1.6 million board-feet timber sale
- ~35% reduction in standing volume.
- Variable-Density Thinning with Skips and Gaps (VDT)



Nisqually State Park Forest Health Thinning

- ▨ Nisqually FHT Unit Boundaries
- ▭ Park Boundaries



Data in these maps were compiled for cartographic purposes. Due to the variability of the source information, the Washington State Parks & Recreation Commission cannot accept responsibility for errors or omissions, and, therefore, there are no warranties which accompany this material.

Date Exported: 6/21/2024 1:38 PM



# WHAT DOES THE FOREST LOOK LIKE?



# Variable

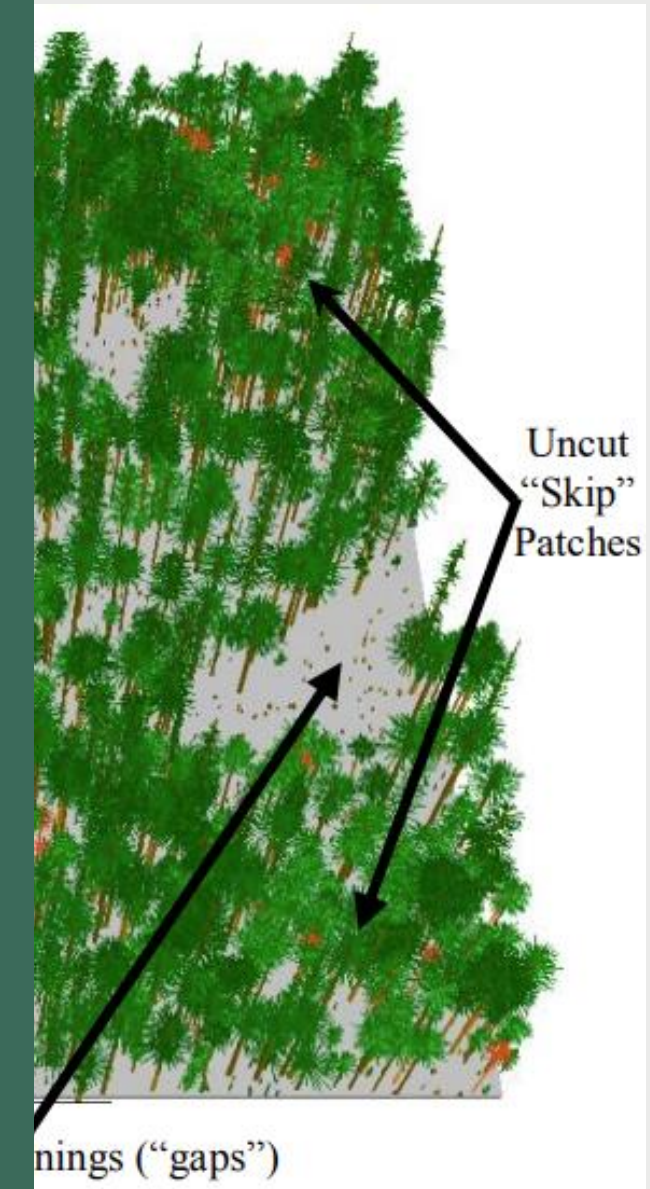
# Thinning



United States Department of Agriculture

## Guide to Variable-Density Thinning Using Skips and Gaps

Leslie C. Brodie and Constance A. Harrington



Forest Service

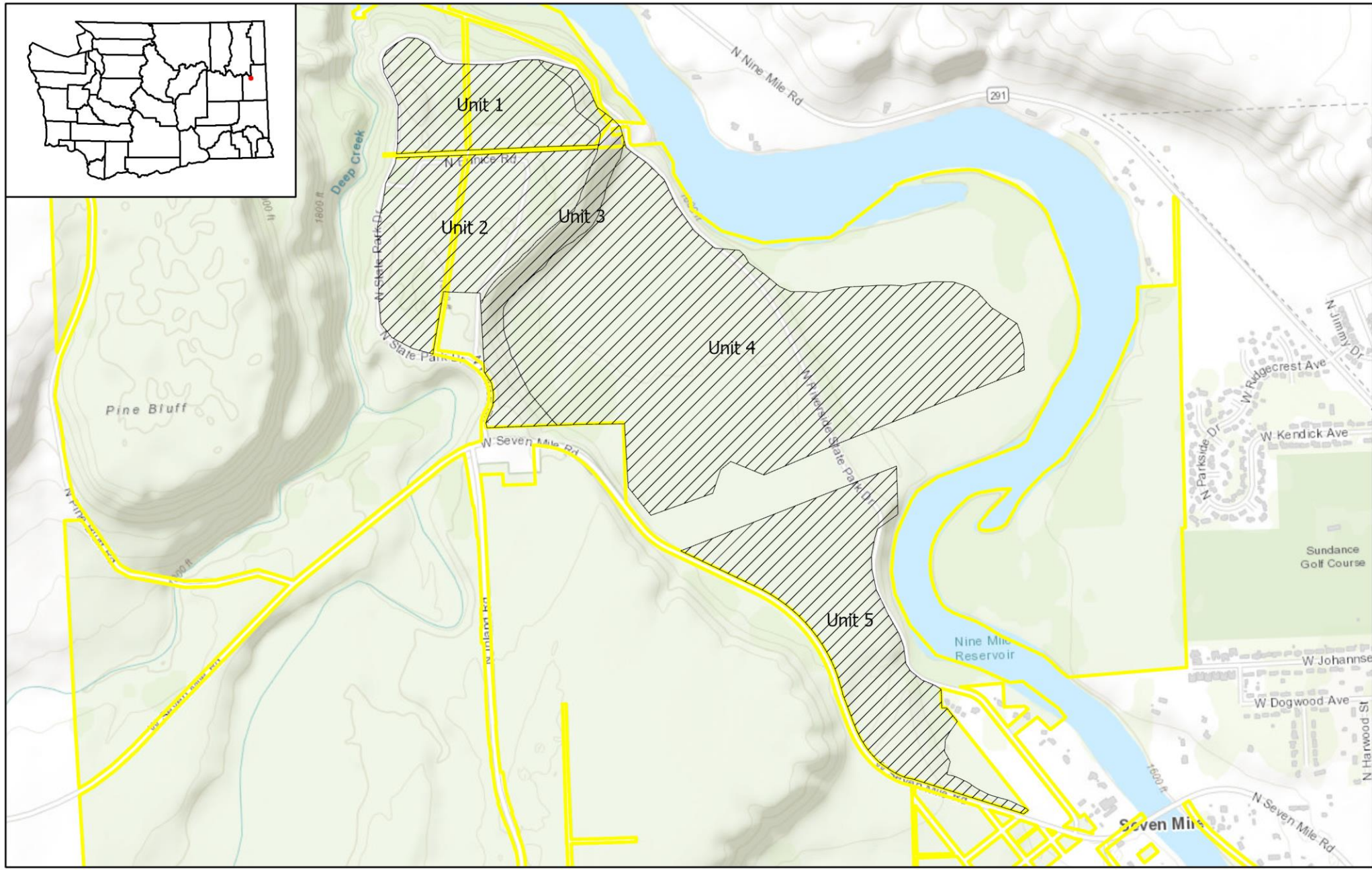
Pacific Northwest Research Station

General Technical Report PNW-GTR-989

July 2020



# Riverside State Park



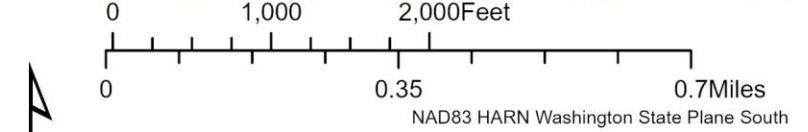
## 7-Mile Forest Health Thinning Project Details

- 342 acres
- 1.1 million board-feet timber sale
- ~40% reduction in standing volume.
- Dry Forest Restoration Thinning  
Individuals, Clumps, and Openings  
Prescription (ICO)



### 7-Mile Forest Health Thinning

- ▨ 7-Mile FHT Boundaries
- ▭ Park Boundaries



Data in these maps were compiled for cartographic purposes. Due to the variability of the source information, the Washington State Parks & Recreation Commission cannot accept responsibility for errors or omissions, and, therefore, there are no warranties which accompany this material.

Date Exported: 6/21/2024 3:57 PM



# WHAT DOES THE FOREST LOOK LIKE?



# Project Steps and Timeline

## Planning

- Assessment and data collection
- Scoping, internal coordination, and project development
- Treatment prescription development
- Layout and marking
- Permitting (FPA and SEPA) (pending decision July 2024)
- Commission approval
- Director approval

## Implementation

- Contracting (Summer 2024)
- Operation (Fall 2024 – Summer 2025)
- Cleanup (Summer 2025 – Spring 2026)
- Evaluation and monitoring





# Project Impacts and Benefits

## **Natural Resources Impacts and Benefits include**

- Short-term: temporary negative impacts resulting from logging operation. Soil/vegetation damage, wildlife displacement. Increased need to control noxious weeds. Elevated surface fire risk. Increased potential for insect attacks.
- Long-term: Changes in vegetation types and habitat. Improved forest health and reduced fire risk. Improved individual tree vigor. Reduced hazard tree risk.

## **Park User Impacts and Benefits include**

- Short-term: closures to protect public safety and negative aesthetic impacts.
- Long-term: Positive aesthetic impacts. Transmission of better park assets to future generations.

## **Local Community Impacts and Benefits include**

- Temporary noise and traffic disruptions from logging operation.
- Temporary increased economic activity from logging operation.
- Long-term better quality recreational amenities, healthier forests, and reduced fire



# Project Economics

	Volume (board-feet)	Stumpage Value	Gross Log Value	Logging Costs	Hauling Costs	Net Log Value
DF sawlog	252,823	\$ 56,885	\$ 108,208	\$ (34,131)	\$ (41,716)	\$ 32,361
PP sawlog	72,811	\$ 38,682	\$ 78,122	\$ (34,131)	\$ (41,716)	\$ 2,275
GF sawlog	1,537	\$ 50,565	\$ 92,533	\$ (34,131)	\$ (41,716)	\$ 16,686
Utility log	140,216	\$ 4,298	\$ 42,980	\$ (34,131)	\$ (6,321)	\$ 2,528
<b>TOTAL</b>	<b>467,386</b>	<b>\$ 150,429</b>	<b>\$ 321,843</b>	<b>\$ (136,524)</b>	<b>\$ (131,468)</b>	<b>\$ 53,851</b>



## Timber Sale Costs

Gross log sale revenue = \$237K



Contract harvest services cost = **-\$196K**

Net log sale revenue = \$41K

## Direct Project Costs



Cultural Resources Survey = **-\$21K**



Road Construction and Maintenance = **-\$16K**

Slash Pile Grinding = **-\$50K**



Net proceeds after direct costs = **-\$47K**



