



WA State Parks & Recreation Commission Presentation

Bellingham, WA
July 18, 2024





Purpose for Today:

1. Reminder on Who we Are and What We Do
2. Introduce our new Executive Director!
3. Share Successes and Highlight Challenges
4. Encourage Investment in MTB Trails



A Quick Refresher on Who We Are:

Evergreen Mountain Bike Alliance is.....

- Dedicated to our Mission: Create, maintain and protect sustainable mountain biking opportunities in Washington. (Since 1989)
- The largest statewide mountain bike non-profit in the US:
 - * **8,500+** members
 - * **90+** Staff (trail crew: **15 - 35** / Coaches & Instructors: **40+** / Admin: **15**)
 - * **~4,000** volunteers / **~25,000** Volunteer hours per year (**1,296** hrs in SPs)
 - * **8 Chapters:**

<i>Southwest (Battle Ground)</i>	<i>Kittitas (Ellensburg)</i>
<i>East (Spokane)</i>	<i>Central (Wenatchee)</i>
<i>Westsound (Kitsap)</i>	<i>Methow (Winthrop)</i>
<i>Cowlitz-Naches (Naches-Packwood)</i>	<i>Cascades to Sound (King/Sno/Pierce)</i>
- Award Winning Trail Development Org: Predator, CCDH & 2 WA Trail Leader Awards
- Becoming Increasingly More Diverse: in both trail users and uses!

"The Little Club That's All Grown Up!"





And... What We Do:

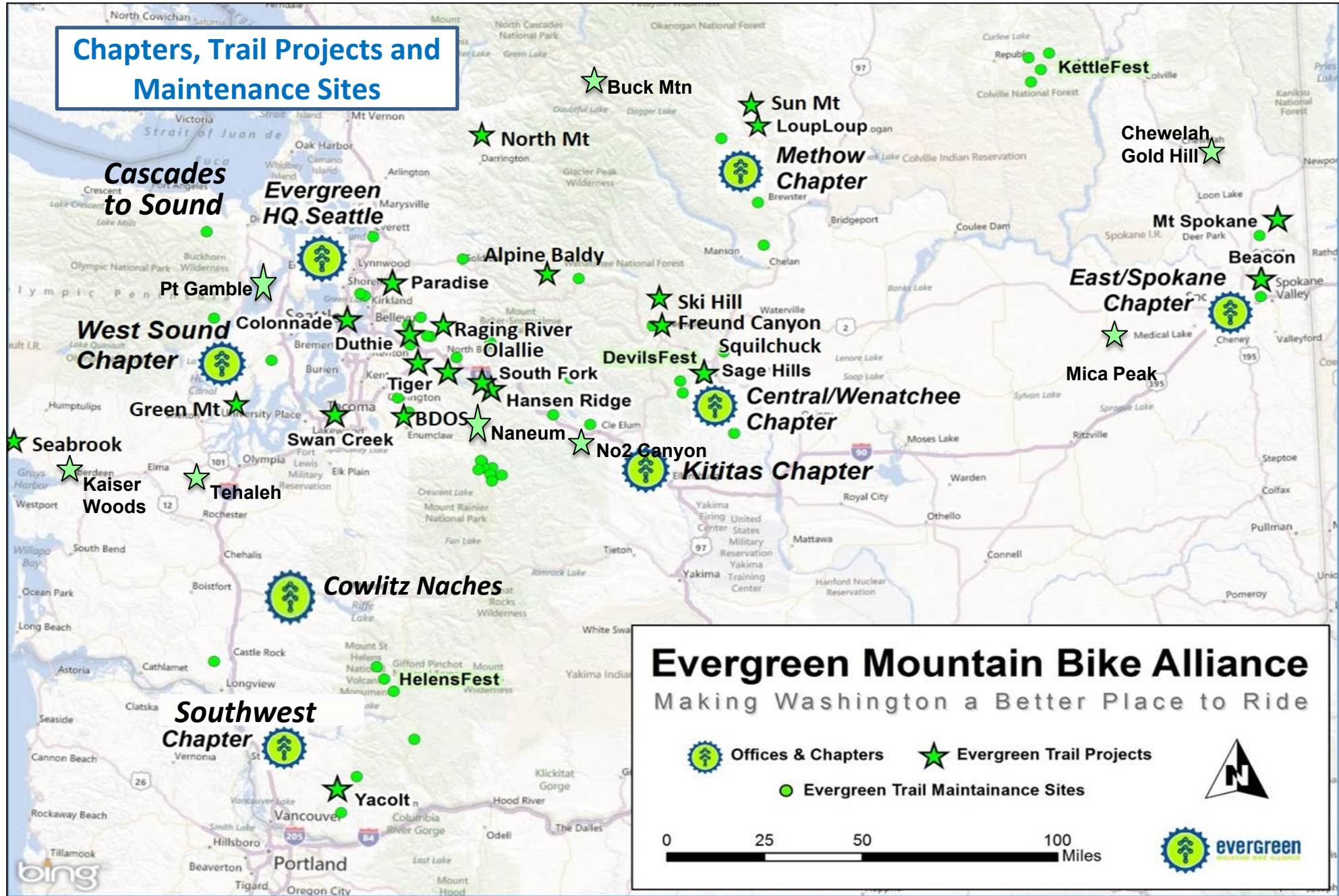
1. Advocate for Trails and Public Lands
2. Build & Maintain Trails & MTB Parks
3. Educate: Youth & Adults
4. Volunteer & Build Community!

Award Winning Trails & Ride Parks!



Where We Work

- Cities
- Counties
- National Forests
- Community Forests
- State Forests
- Natural Resource Conservation Areas
- Wildlife Areas
- State Parks....



Bellingham: Internationally known MTB Destination

- Larrabee State Park



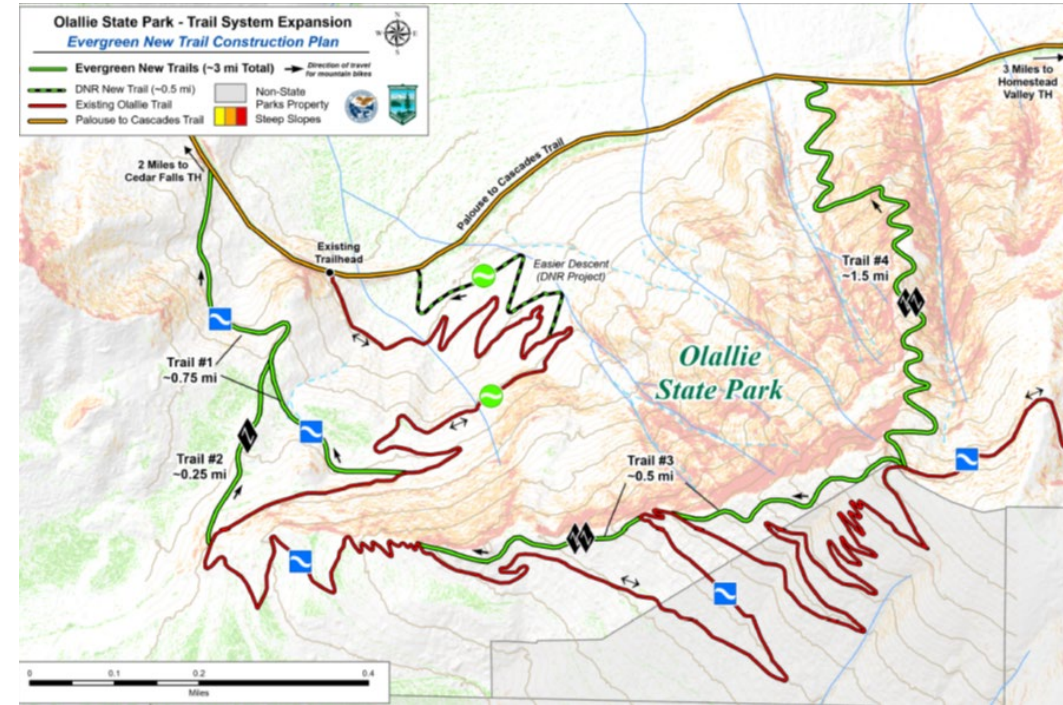
Recent Collaboration and Successes:

- Continued strong partnership in Legislative & Advocacy
- Dedication to partnership and trail planning at Mt. Spokane
- Collaboration in advocacy and trail planning: Riverside SP
- Board retreat at Mt Spokane State Park!
- Lots of kids enrolled in camps at Squilchuck Park this summer: Trail investment enables **SOLD OUT** youth camps (as well as Adult MTB Clinics, Mother and Child Classes, Spanish speaking only classes, Adaptive Bike Classes, No Child Left Inside Programming).
- Ongoing planning for Phase 2 Olallie Trail Development & Discussions of lower loop as accessible for adaptive bikes.



Recent Challenges:

- Risk of losing RCO Grant Funds for Olallie. (Nearly 2 years since DNS was issued!)
- Concern about State Parks Action to remove black diamond trails from project scope.
- Inaction in executing a maintenance agreement & issuing of work orders to address areas of concern (= ongoing challenges that remain unsolved.)
- Lack of Investment & Underutilization of Trail Organizations like Evergreen.



Investment in Trail Orgs is Overdue & Cost Effective!

Since 2018:	State Parks Investment in Evergreen	Evergreen Investment in State Parks:
Squilchuck	\$31,164.54	\$73K in equipment tools, expenses, build crew.
Mt Spokane	\$4,959.50	Chapter invested \$37K in building trails.
Olallie	Time & effort in SEPA & project revisions. RCO grant = \$77 K	\$45K in Match funding
Consulting	\$1,117 (training) \$2,360 (Unpaid services)	Countless hours of free services, meetings, planning, site visits and advocacy with and for State Parks
Volunteer Maintenance	Staff Time & Effort	1,000+/Year ~\$20K

SP Investment in Evergreen: \$37,241.04....



Recommendations & Request

- **Prioritize & Approve Olallie Phase II Scope:** We are ready to go!
- **Issue Maintenance Agreement:** As submitted per Parks' Staff
Request: 2 weeks of 2 professional trail crew in each park, & requested trail improvement projects: \$140K.
- **Prioritize and Invest in Trail Organization Partnerships:** Mtb, hike, equestrian.
 - Get boots on the ground to address trail quality and environmental performance
 - Reduce and eliminate user conflict by adjusting/refining trails to ensure ALL users have a quality experience when they visit State Parks.



Thank You!

Yvonne Kraus
206.572.5561
Yvonne@evergreenmtb.org

