

WASHINGTON STATE PARKS & RECREATION COMMISSION

MARK O. BROWN, CHAIR

SOPHIA DANENBERG

LAURIE CONNELLY

MICHAEL LATIMER

KEN BOUNDS

ALI RAAD

HOLLY WILLIAMS

DIANA DUPUIS, DIRECTOR



75% REVIEW

REGION MANAGER

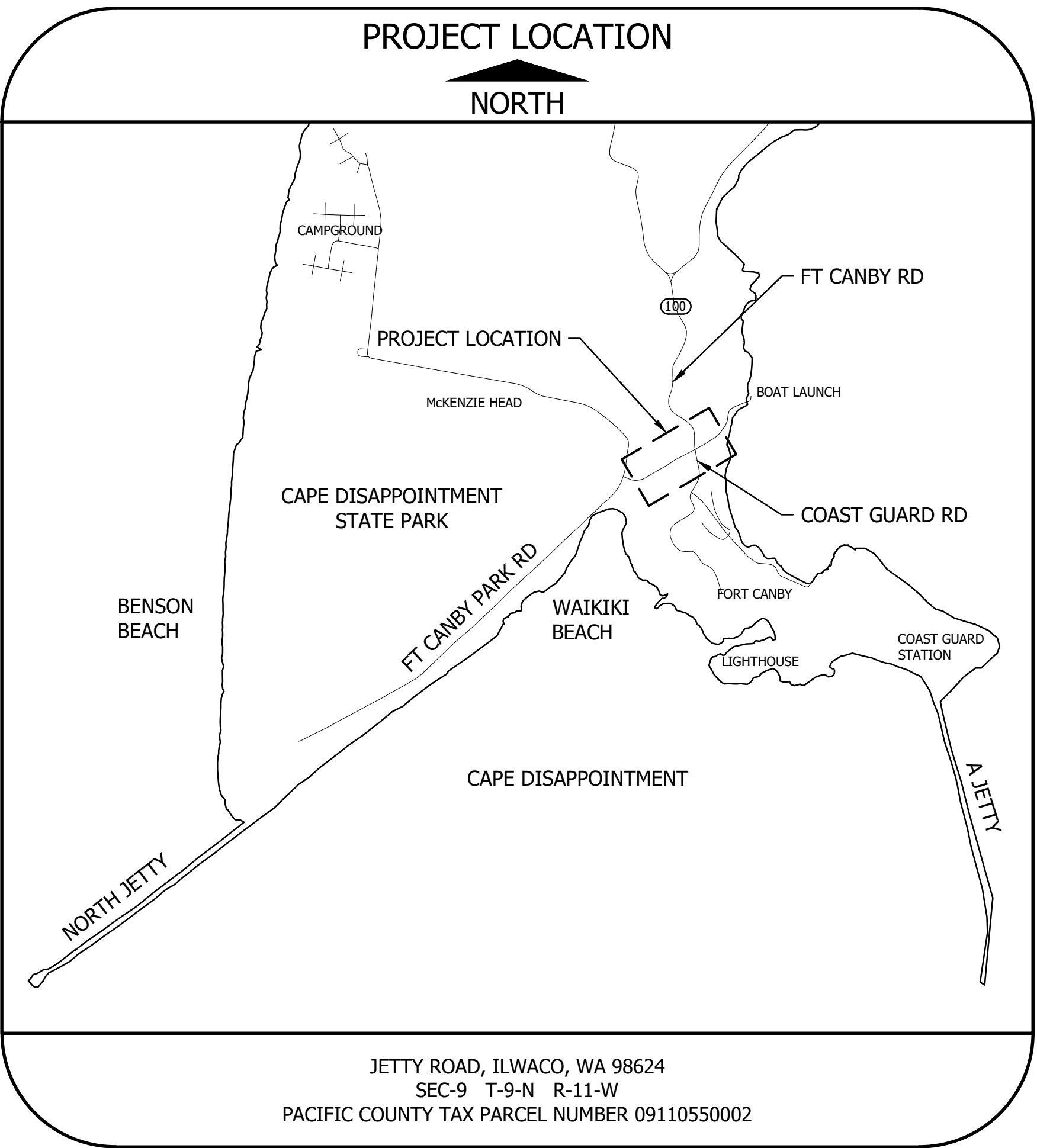
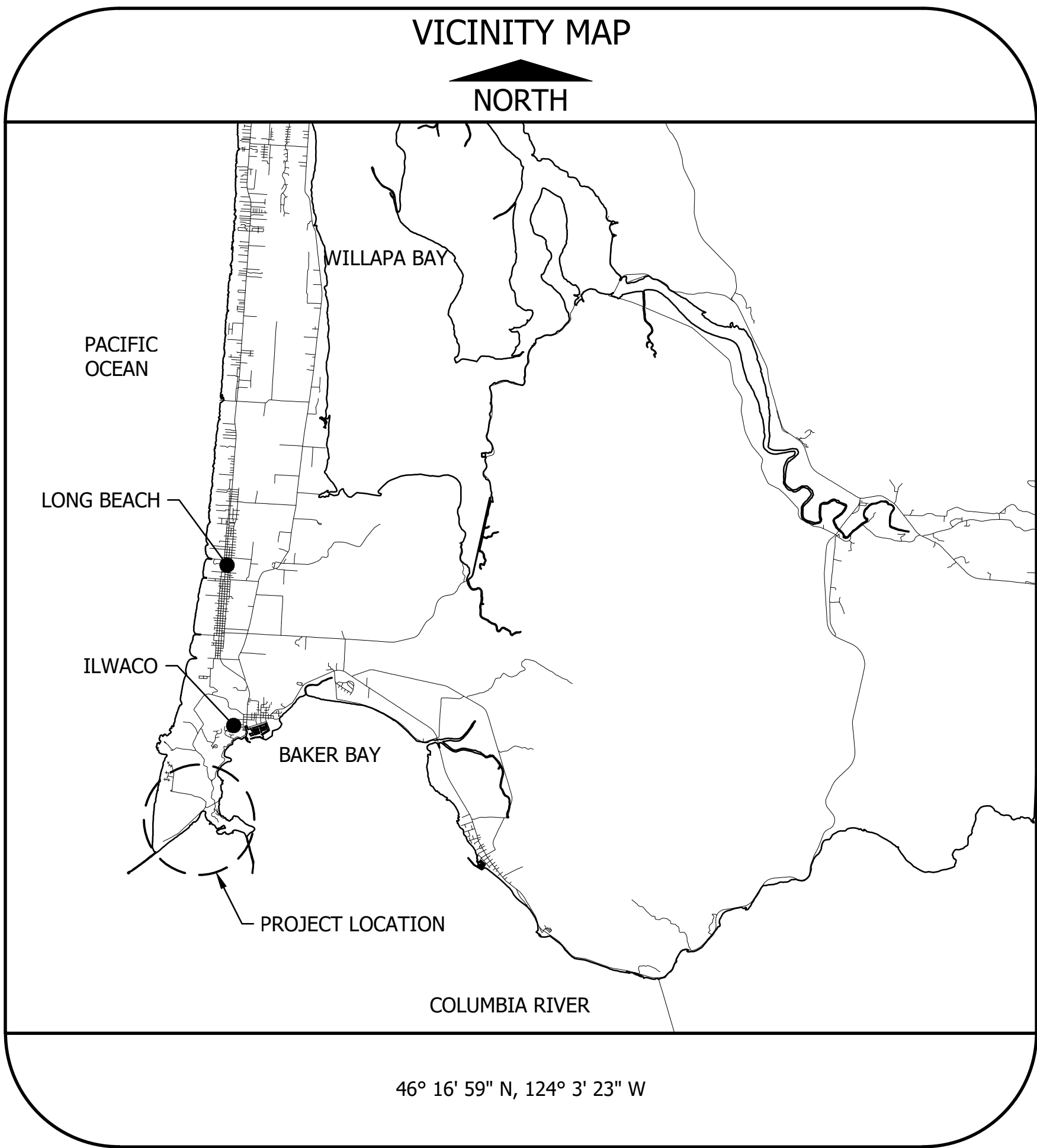
date

CAPITAL PROGRAM MANAGER

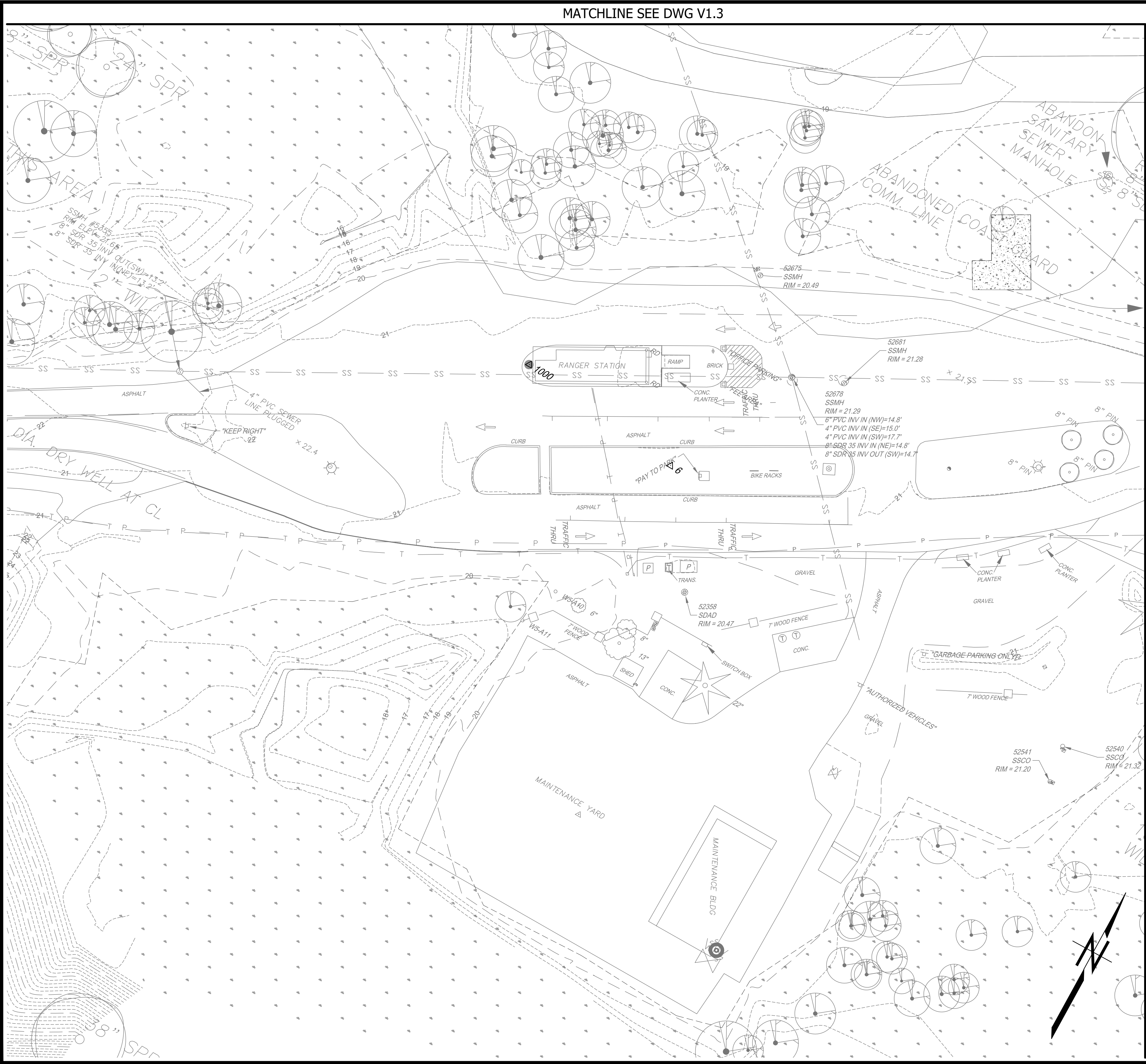
date

Area Manager: Evan Roberts

CAPE DISAPPOINTMENT STATE PARK WELCOME CENTER AND ENTRANCE IMPROVEMENTS



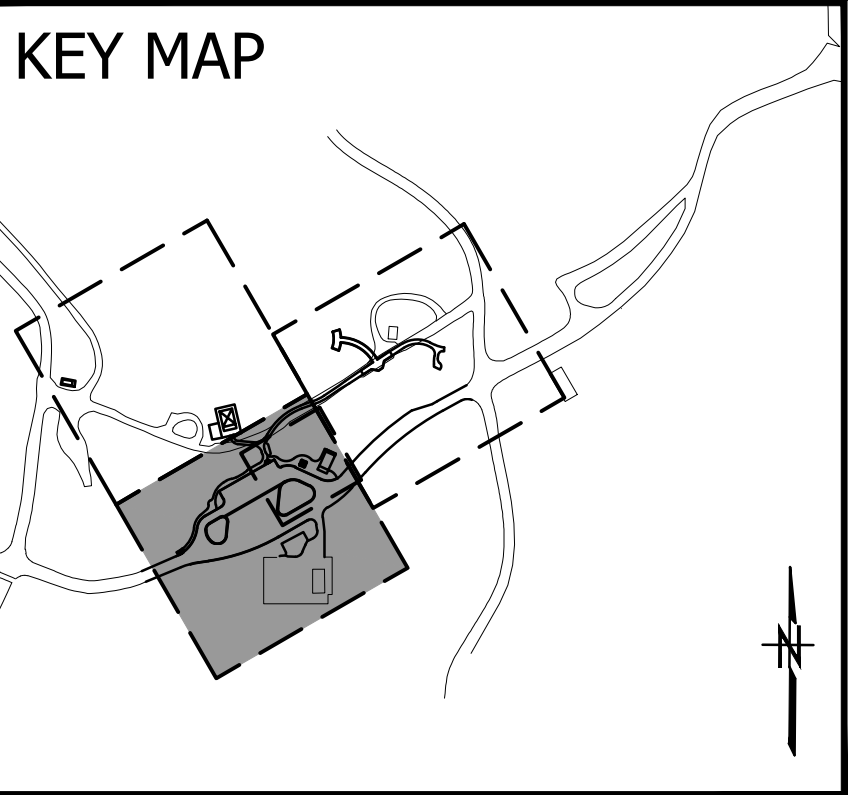
Plotted: Jun 02, 2023 - 2:51pm eva.ho K:\Project\33400\33427\CADD\ACAD\DWG\V-SURVEY.dwg Layout Name: V1.1



SURVEY NOTES:

1. THE HORIZONTAL DATUM FOR THIS PROJECT IS THE WASHINGTON STATE PLANE COORDINATE SYSTEM SOUTH ZONE, NAD83(CORS). THE VERTICAL DATUM IS NAVD 1988 AND BASED UPON N.G.S. BENCHMARK T536 (PID SD0294) WHICH IS A 3-1/4 INCH BRASS DISK SET IN A LARGE BASALT OUTCROP IN THE MEDIAN OF THE ROADS GOING TO THE BOAT RAMPS. THE ELEVATION OF THIS MARK IS 20.62' NAVD88.
2. ALL DISTANCES SHOWN ARE GRID VALUES TO OBTAIN GROUND VALUES DIVIDE DISTANCES BY PROJECT COMBINED FACTOR OF 0.999931. FOR GEODETIC NORTH FROM GRID NORTH, AS SHOWN HEREON, ROTATE COUNTER-CLOCKWISE 2°35'30"
3. THE RIGHT-OF-WAY SHOWN HEREON IS FOR REFERENCE TO THE EXISTING PAVEMENT ONLY. SEE HLB AND ASSOC. INC SR100 RIGHT-OF-WAY DRAWING FURNISHED TO PARAMETRIX INC. FOR FURTHER DETAILS.
4. THIS TOPOGRAPHICAL MAP IS COMPILATION OF FIELD DATA COLLECTED BY HLB AND ASSOCIATES, INC. USING TRADITIONAL METHODS, AERIAL PHOTOGRAMETRIC MAPPING BY SPENCER B. GROSS , AND WASHINGTON STATE PARKS MAPPING SURVEYS. UTILITY LOCATIONS AS SHOWN HEREON WERE LOCATED IN THE FALL OF 2002. SUBSURFACE UTILITIES ARE PER UTILITY COMPANY RECORDS, WASHINGTON STATE PARKS RECORDS AND/OR SURFACE PAINTMARK LOCATIONS. THEY DO NOT GUARANTEE THEIR RECORDS OR SURFACE LOCATES TO BE FREE OF ERRORS OR OMISSIONS, THEREFORE HLB & ASSOCIATES, INC. RESERVES THE SAME LIMITATIONS.

NOTE: CONTOURS SHOWN AT 1' INTERVALS



CAD NO. K:\Project\33400\33427\CADD\ACAD\DWG\V-SURVEY.dwg

	DATE
	APP.
	INT.
	REVISIONS
	NO.

ACTION	BY	DATE
DESIGNED	SMC	04/28/23
DRAWN	JT	04/28/23
CHECKED (FIELD)		
CHECKED (HDQTS.)		

PROJECT ENGINEER

WASHINGTON STATE PARKS AND RECREATION COMMISSION

CAPE DISAPPOINTMENT STATE PARK

WELCOME CENTER AND ENTRANCE IMPROVEMENTS

SURVEY CONTROL PLAN

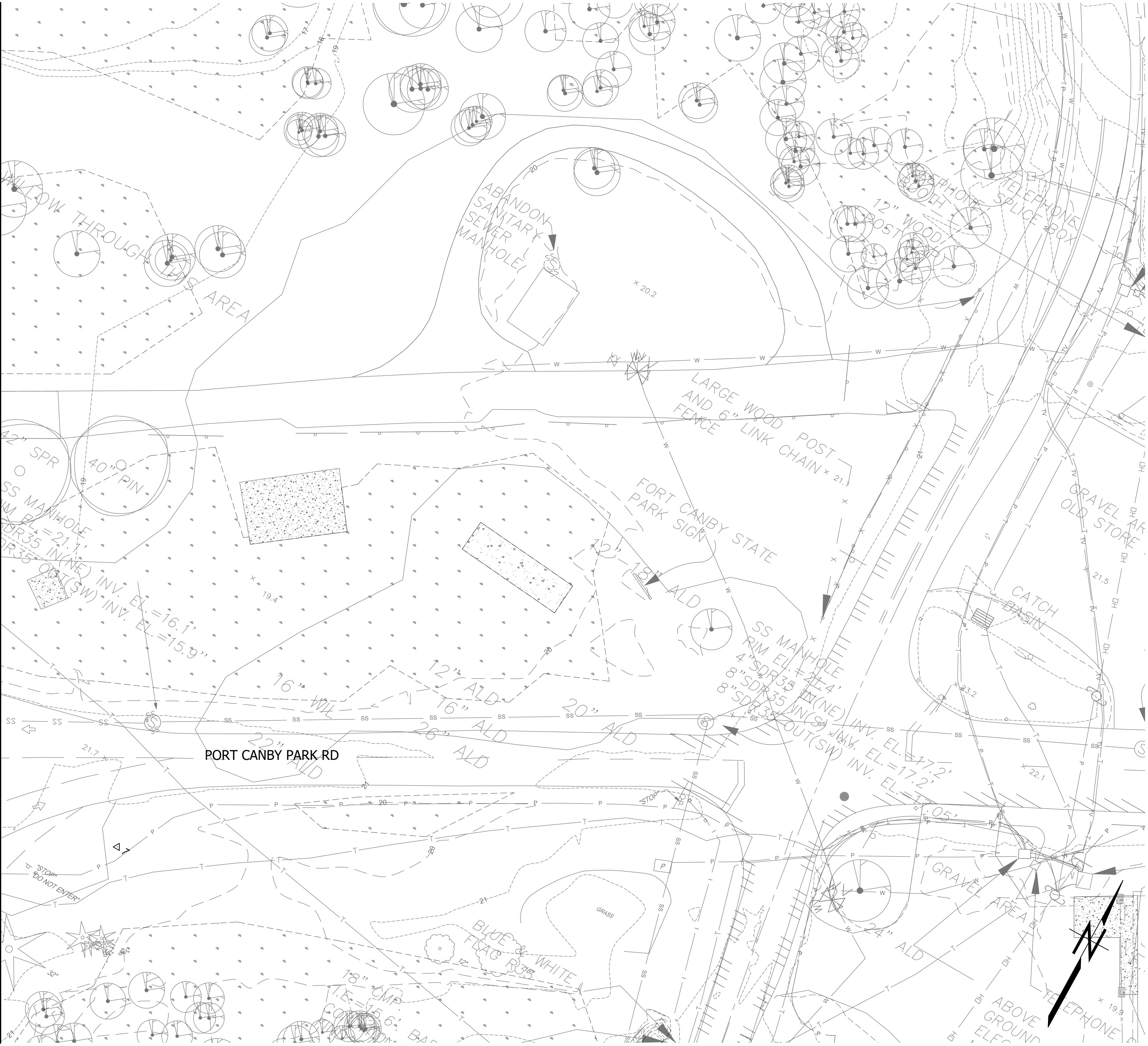
V1.1

SCALE 0 20' 40'

PARKS FILE#

MATCHLINE SEE DWG V1.3

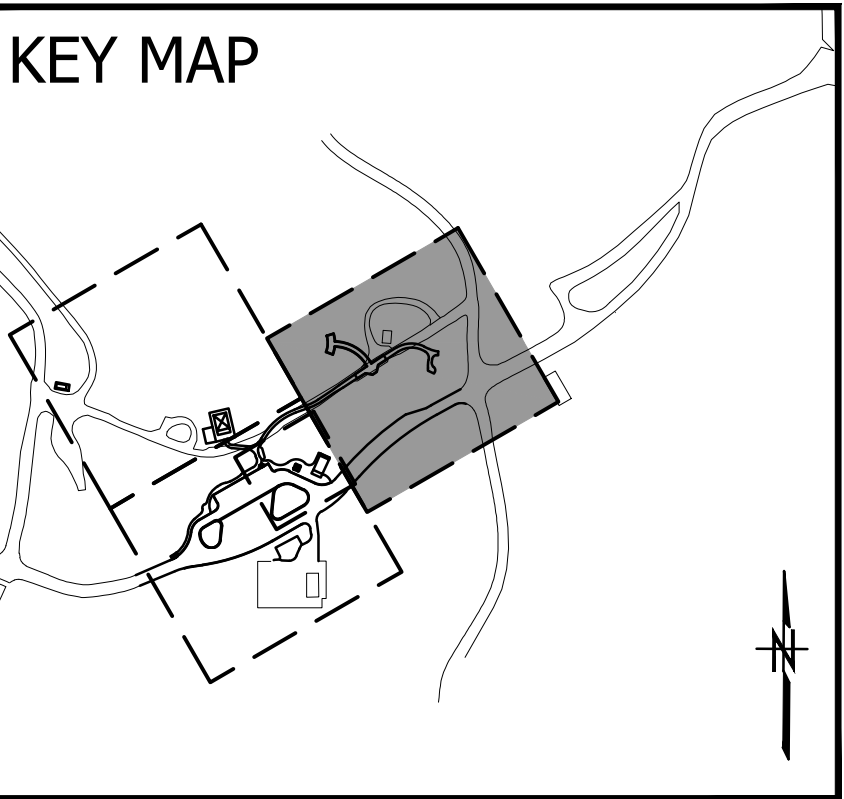
MATCHLINE SEE DWG V1.1



SURVEY NOTES:

1. THE HORIZONTAL DATUM FOR THIS PROJECT IS THE WASHINGTON STATE PLANE COORDINATE SYSTEM SOUTH ZONE, NAD83(CORS). THE VERTICAL DATUM IS NAVD 1988 AND BASED UPON N.G.S. BENCHMARK T536 (PID SD0294) WHICH IS A 3-1/4 INCH BRASS DISK SET IN A LARGE BASALT OUTCROP IN THE MEDIAN OF THE ROADS GOING TO THE BOAT RAMPS. THE ELEVATION OF THIS MARK IS 20.62' NAVD88.
2. ALL DISTANCES SHOWN ARE GRID VALUES TO OBTAIN GROUND VALUES DIVIDE DISTANCES BY PROJECT COMBINED FACTOR OF 0.999931. FOR GEODETIC NORTH FROM GRID NORTH, AS SHOWN HEREON, ROTATE COUNTER-CLOCKWISE 2°35'30"
3. THE RIGHT-OF-WAY SHOWN HEREON IS FOR REFERENCE TO THE EXISTING PAVEMENT ONLY. SEE HLB AND ASSOC. INC SR100 RIGHT-OF-WAY DRAWING FURNISHED TO PARAMETRIX INC. FOR FURTHER DETAILS.
4. THIS TOPOGRAPHICAL MAP IS COMPILATION OF FIELD DATA COLLECTED BY HLB AND ASSOCIATES, INC. USING TRADITIONAL METHODS, AERIAL PHOTOGRAMETRIC MAPPING BY SPENCER B. GROSS , AND WASHINGTON STATE PARKS MAPPING SURVEYS. UTILITY LOCATIONS AS SHOWN HEREON WERE LOCATED IN THE FALL OF 2002. SUBSURFACE UTILITIES ARE PER UTILITY COMPANY RECORDS, WASHINGTON STATE PARKS RECORDS AND/OR SURFACE PAINTMARK LOCATIONS. THEY DO NOT GUARANTEE THEIR RECORDS OR SURFACE LOCATES TO BE FREE OF ERRORS OR OMISSIONS, THEREFORE HLB & ASSOCIATES, INC. RESERVES THE SAME LIMITATIONS.

NOTE: CONTOURS SHOWN AT 1' INTERVALS



CAD NO. K:\Project\33400\33427\CADD\ACAD\DWG\V-SURVEY.dwg

DATE	
INT.	APP.
REVIEWS	
NO.	

ACTION	BY	DATE
DESIGNED	SMC	04/28/23
DRAWN	JT	04/28/23
CHECKED (FIELD)		
CHECKED (HDQTS.)		

PROJECT ENGINEER

WASHINGTON
STATE
PARKS
AND
RECREATION
COMMISSION



CAPE
DISAPPOINTMENT
STATE PARK

WELCOME CENTER
AND ENTRANCE
IMPROVEMENTS

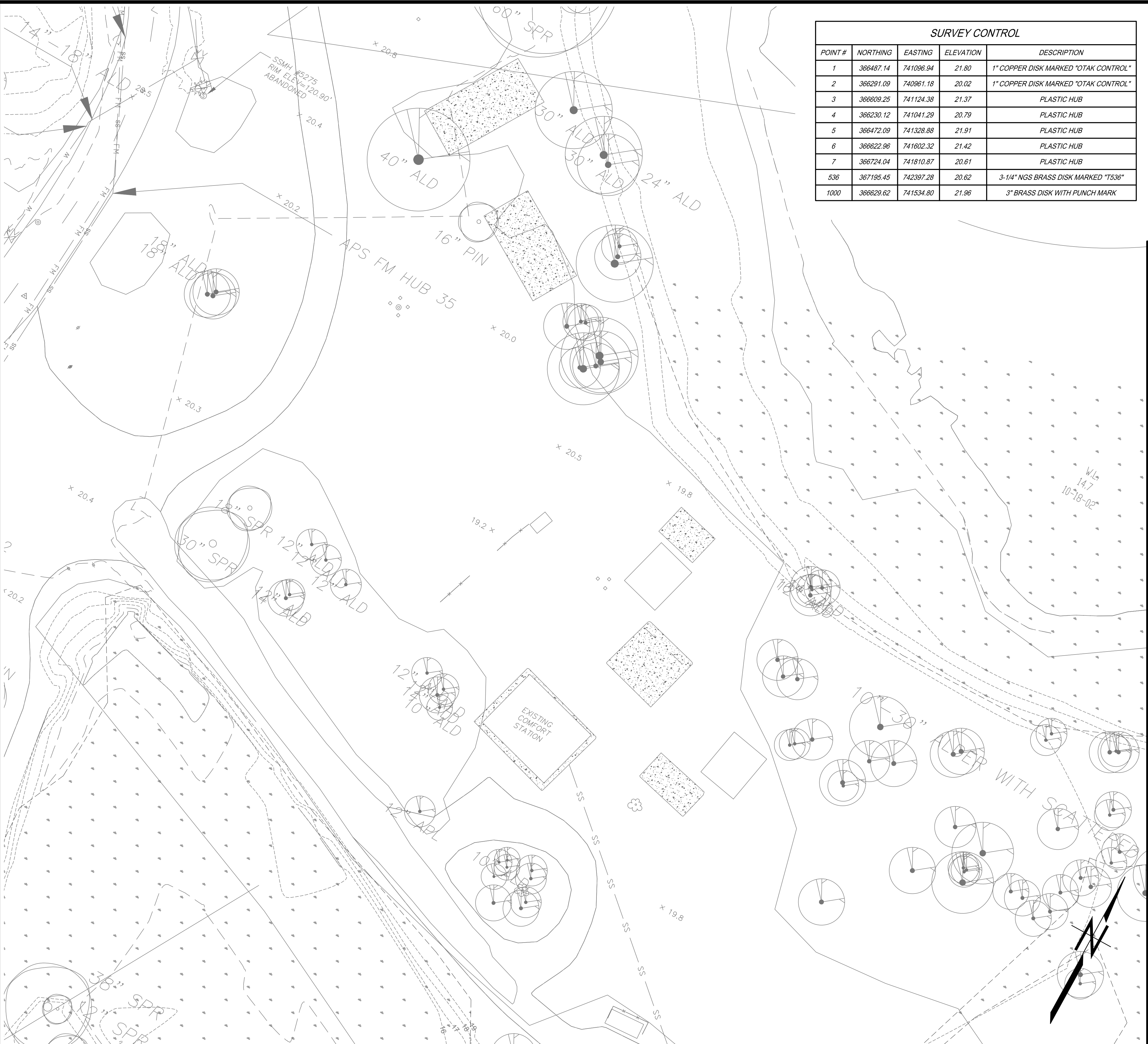
SURVEY CONTROL
PLAN

V1.2



PARKS FILE#

Plotted: Jun 02, 2023 - 2:51pm eva.ho K:\Project\33400\33427\CADD\ACAD\DWG\V-SURVEY.dwg Layout Name: V1.3



MATCHLINE SEE DWG V1.1

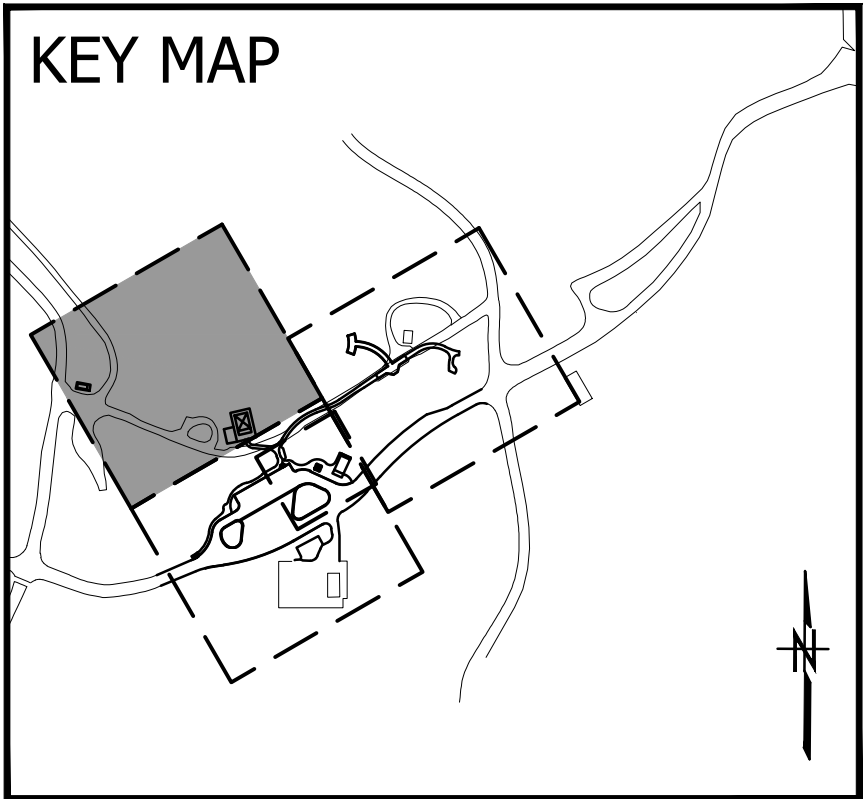
SURVEY CONTROL				
POINT #	NORTHING	EASTING	ELEVATION	DESCRIPTION
1	366487.14	741096.94	21.80	1" COPPER DISK MARKED "OTAK CONTROL"
2	366291.09	740961.18	20.02	1" COPPER DISK MARKED "OTAK CONTROL"
3	366609.25	741124.38	21.37	PLASTIC HUB
4	366230.12	741041.29	20.79	PLASTIC HUB
5	366472.09	741328.88	21.91	PLASTIC HUB
6	366622.96	741602.32	21.42	PLASTIC HUB
7	366724.04	741810.87	20.61	PLASTIC HUB
536	367195.45	742397.28	20.62	3-1/4" NGS BRASS DISK MARKED "T536"
1000	366629.62	741534.80	21.96	3" BRASS DISK WITH PUNCH MARK

MATCHLINE SEE DWG V1.2

SURVEY NOTES:

- THE HORIZONTAL DATUM FOR THIS PROJECT IS THE WASHINGTON STATE PLANE COORDINATE SYSTEM SOUTH ZONE, NAD83(CORS). THE VERTICAL DATUM IS NAVD 1988 AND BASED UPON N.G.S. BENCHMARK T536 (PID SD0294) WHICH IS A 3-1/4 INCH BRASS DISK SET IN A LARGE BASALT OUTCROP IN THE MEDIAN OF THE ROADS GOING TO THE BOAT RAMPS. THE ELEVATION OF THIS MARK IS 20.62' NAVD88.
- ALL DISTANCES SHOWN ARE GRID VALUES TO OBTAIN GROUND VALUES DIVIDE DISTANCES BY PROJECT COMBINED FACTOR OF 0.999931. FOR GEODETIC NORTH FROM GRID NORTH, AS SHOWN HEREON, ROTATE COUNTER-CLOCKWISE 2°35'30"
- THE RIGHT-OF-WAY SHOWN HEREON IS FOR REFERENCE TO THE EXISTING PAVEMENT ONLY. SEE HLB AND ASSOC. INC SR100 RIGHT-OF-WAY DRAWING FURNISHED TO PARAMETRIX INC. FOR FURTHER DETAILS.
- THIS TOPOGRAPHICAL MAP IS COMPILATION OF FIELD DATA COLLECTED BY HLB AND ASSOCIATES, INC. USING TRADITIONAL METHODS, AERIAL PHOTOGRAMETRIC MAPPING BY SPENCER B. GROSS , AND WASHINGTON STATE PARKS MAPPING SURVEYS. UTILITY LOCATIONS AS SHOWN HEREON WERE LOCATED IN THE FALL OF 2002. SUBSURFACE UTILITIES ARE PER UTILITY COMPANY RECORDS, WASHINGTON STATE PARKS RECORDS AND/OR SURFACE PAINTMARK LOCATIONS. THEY DO NOT GUARANTEE THEIR RECORDS OR SURFACE LOCATES TO BE FREE OF ERRORS OR OMISSIONS, THEREFORE HLB & ASSOCIATES, INC. RESERVES THE SAME LIMITATIONS.

NOTE: CONTOURS SHOWN AT 1' INTERVALS



SHEET 7 OF 108

CAD NO. K:\Project\33400\33427\CADD\ACAD\DWG\V-SURVEY.dwg

	DATE
	APP.
	INT.
	NO.
	REVISIONS

ACTION	BY	DATE
DESIGNED	SMC	04/28/23
DRAWN	JT	04/28/23
CHECKED (FIELD)		
CHECKED (HDQTS.)		

PROJECT ENGINEER

WASHINGTON STATE PARKS AND RECREATION COMMISSION

CAPE DISAPPOINTMENT STATE PARK

WELCOME CENTER AND ENTRANCE IMPROVEMENTS

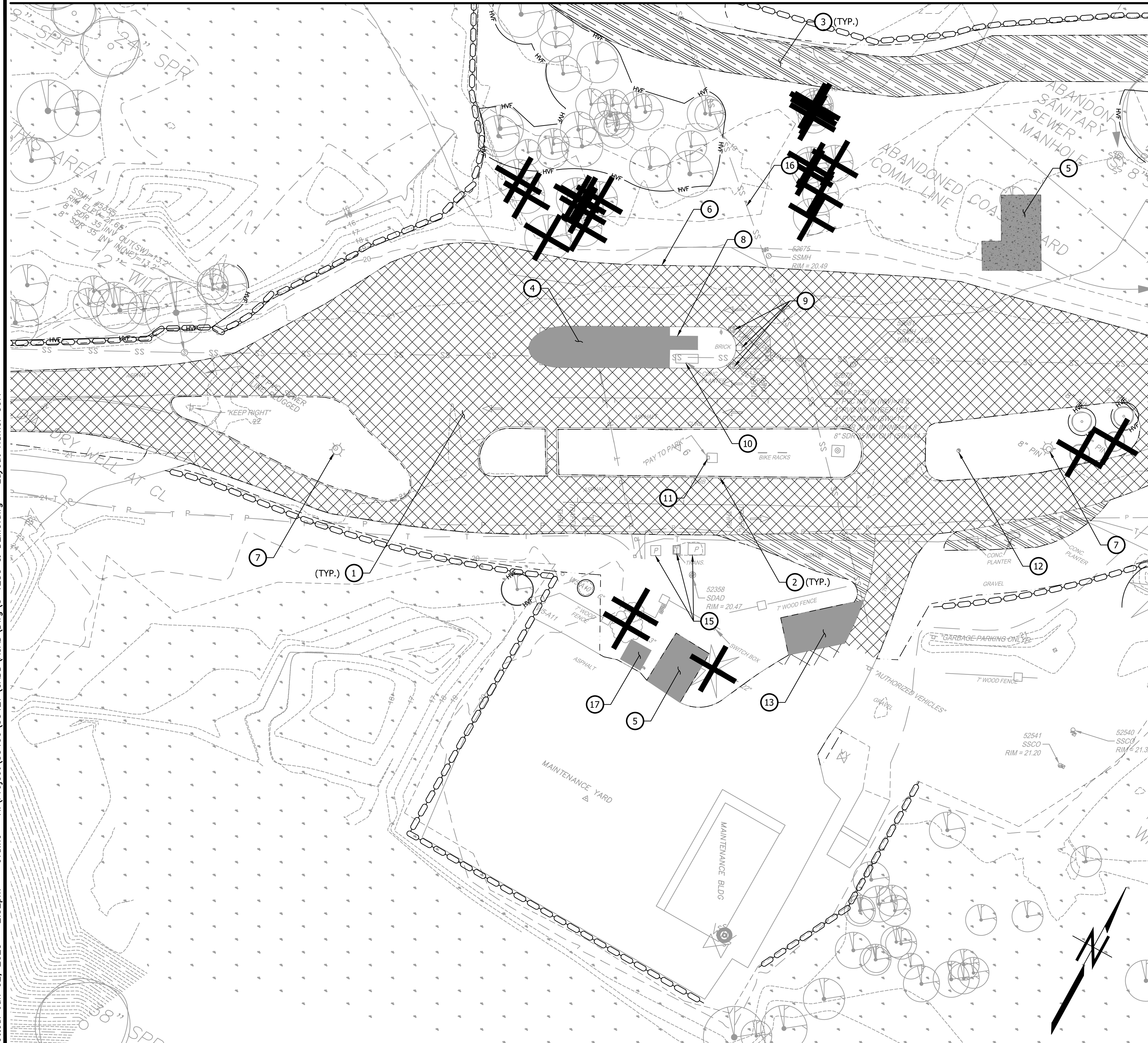
SURVEY CONTROL PLAN

V1.3

SCALE

PARKS FILE#

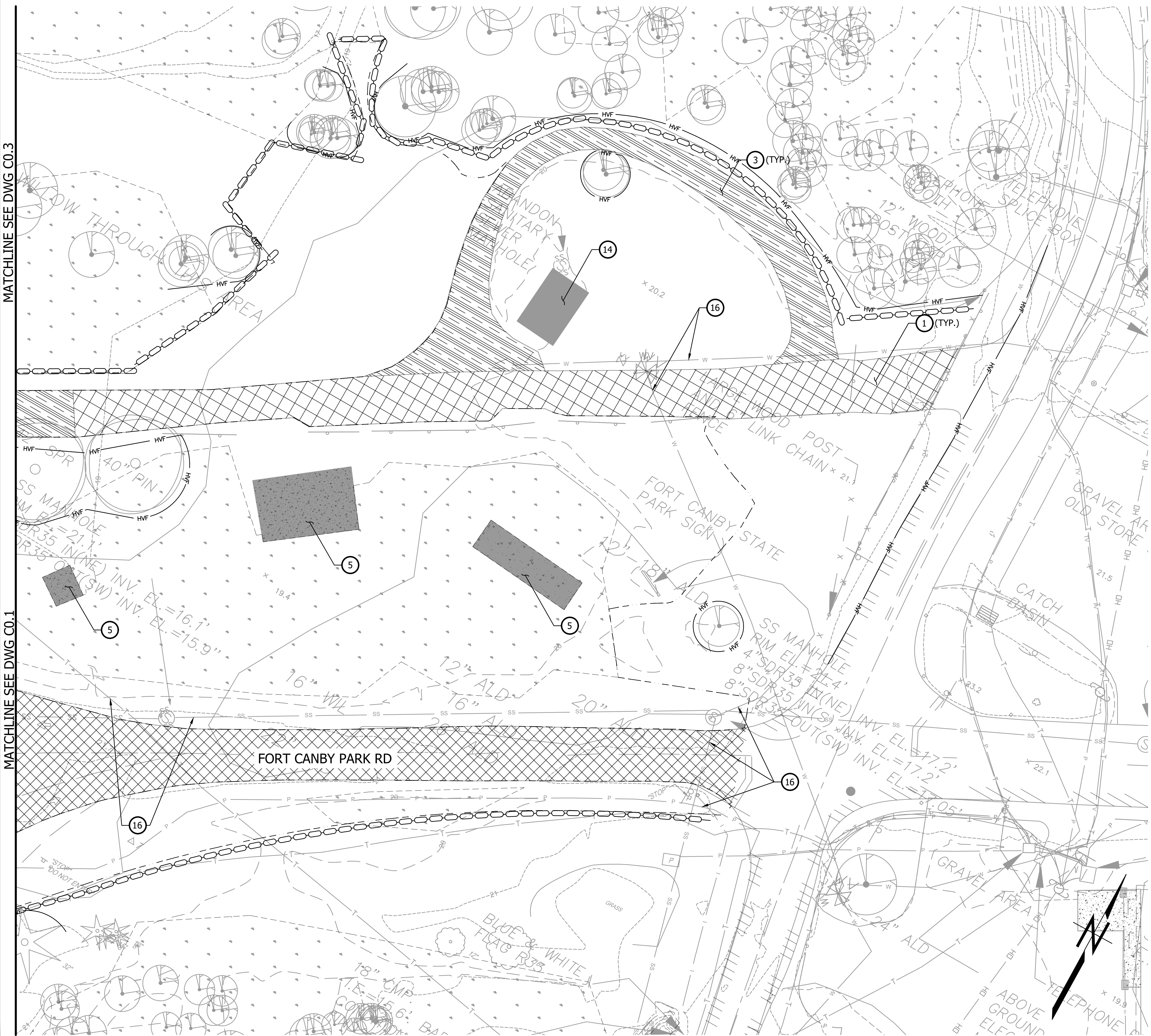
PARKS FILE#



Plotted: Jun 02, 2023 - 2:52pm eva.ho K:\Project\33400\33427\CADD\ACAD\DWG\C-TESS & DEMO.dwg Layout Name: C0.2

MATCHLINE SEE DWG C0.1

MATCHLINE SEE DWG C0.3



TESC/DEMOLITION NOTES:

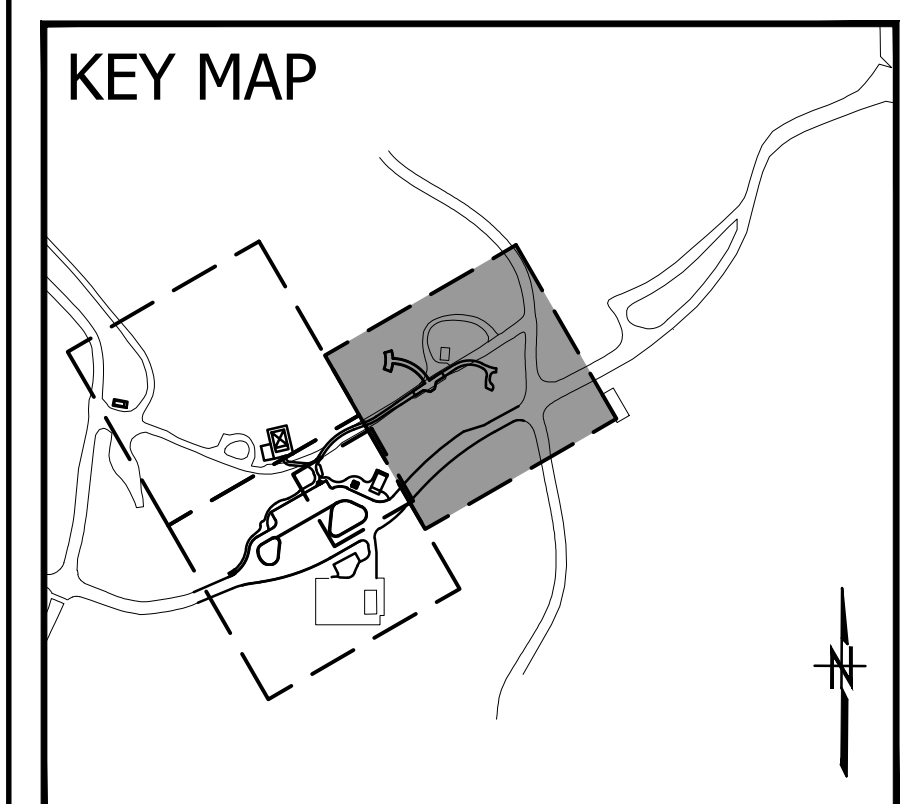
- 1 REMOVE EXISTING ASPHALT PAVING.
- 2 REMOVE EXISTING TRAFFIC CURB.
- 3 REMOVE EXISTING GRAVEL SURFACING.
- 4 REMOVE EXISTING BUILDING AND CONCRETE PAD.
- 5 REMOVE EXISTING CONCRETE FOUNDATION.
- 6 RELOCATE EXISTING KIOSK.
- 7 REMOVE EXISTING WOOD POLE.
- 8 REMOVE CONCRETE ACCESS RAMP & HANDRAILS.
- 9 REMOVE (3) EXISTING CMU COLUMNS.
- 10 REMOVE EXISTING CMU PLANTER.
- 11 SALVAGE EXISTING PAY STATION.
- 12 SALVAGE EXISTING FLAG POLE.
- 13 SALVAGE EXISTING DUMPSTER/TRASH COMPACTOR.
- 14 REMOVE EXISTING HISTORIC BUILDING.
- 15 SEE ELECTRICAL SITE PLAN FOR NEW LOCATION.
- 16 PROTECT EXISTING UTILITY LINES.
- 17 REMOVE EXISTING SHED.

GENERAL TESC NOTES:

1. LOCATION OF TESC MEASURES SHOWN ARE APPROXIMATE AND SHALL BE FIELD LOCATED TO ACCOMMODATE SITE CONDITIONS AND WORK SCHEDULE.
2. RELOCATE TESC MEASURES, OR INSTALL NEW MEASURES, SO THAT AS THE SITE CONDITIONS CHANGE THE TESC IS ALWAYS IN COMPLIANCE WITH WSDOT TESC MINIMUM REQUIREMENTS. MAINTAIN TESC MEASURES IN ACCORDANCE WITH THE PROJECT SPECIFICATIONS, THE WSDOT STANDARDS, AND THE MANUFACTURER'S RECOMMENDATIONS.
3. CONTRACTOR SHALL NOT REMOVE ANY TREES WITHIN THE PROJECT LIMITS NOT IDENTIFIED FOR REMOVAL WITHOUT PRIOR APPROVAL FROM WSPRC.

LEGEND:

- X TREE REMOVAL
- APPROX. CLEARING LIMITS
- WATTLE (WSDOT STD PLAN I-30.30)
- HIGH VISIBILITY SLIT FENCE (WSDOT STD PLAN I-30.17)
- HVF HIGH VISIBILITY FENCE (WSDOT STD PLAN I-10.10)
- ASPHALT PAVING REMOVAL
- GRAVEL PAVING REMOVAL
- BUILDING/CONCRETE REMOVAL



CAD NO. K:\Project\33400\33427\CADD\ACAD\DWG\C-TESS & DEMO.dwg

		DATE
		APP.
		INT.
		REVISIONS
		NO.

ACTION	BY	DATE
DESIGNED	SMC	04/28/23
DRAWN	JT	04/28/23
CHECKED (FIELD)		
CHECKED (HDQTS.)		

PROJECT ENGINEER

WASHINGTON STATE PARKS AND RECREATION COMMISSION

CAPE DISAPPOINTMENT STATE PARK

WELCOME CENTER AND ENTRANCE IMPROVEMENTS

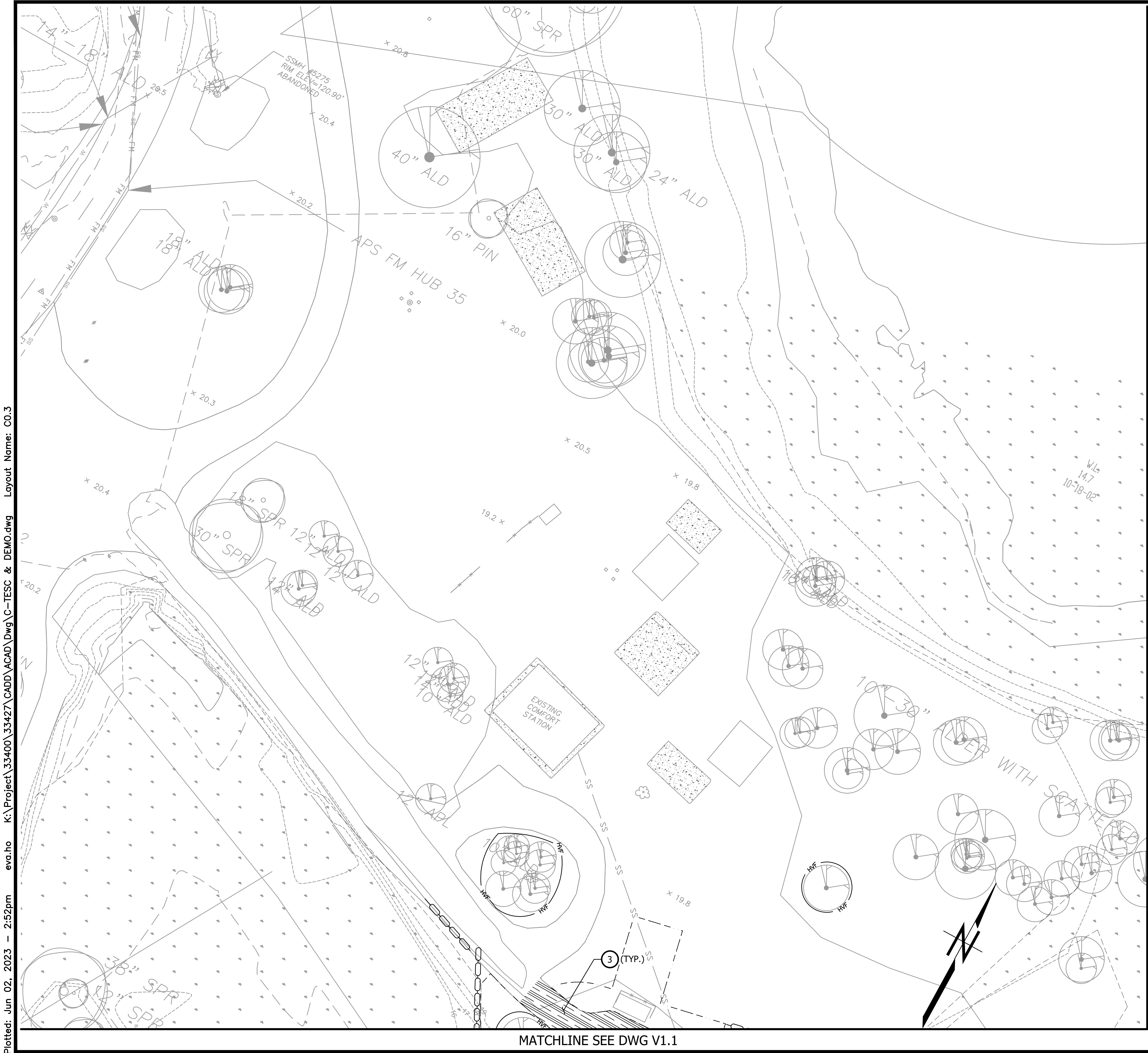
TESC & DEMOLITION PLAN

C0.2

SCALE 0 20' 40'

PARKS FILE#

Plotted: Jun 02, 2023 - 2:52pm K:\Project\33400\33427\CADD\ACAD\DWG\C-TESC & DEMO.dwg Layout Name: C0.3



TESC/DEMOLITION NOTES:

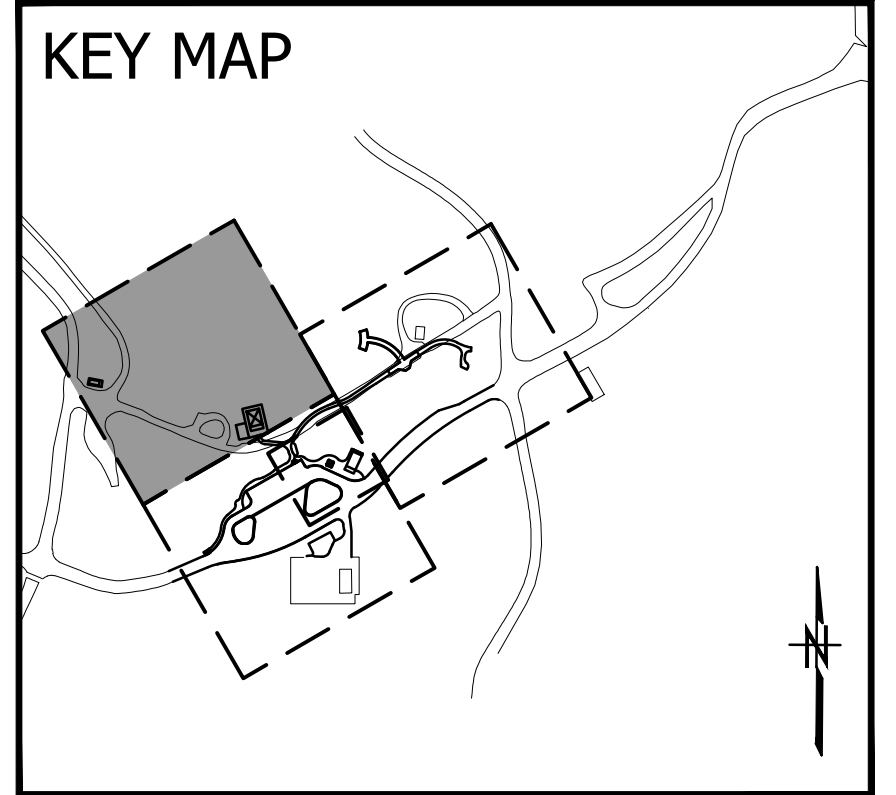
- 1 REMOVE EXISTING ASPHALT PAVING.
- 2 REMOVE EXISTING TRAFFIC CURB.
- 3 REMOVE EXISTING GRAVEL SURFACING.
- 4 REMOVE EXISTING BUILDING AND CONCRETE PAD.
- 5 REMOVE EXISTING CONCRETE FOUNDATION.
- 6 RELOCATE EXISTING KIOSK.
- 7 REMOVE EXISTING WOOD POLE.
- 8 REMOVE CONCRETE ACCESS RAMP & HANDRAILS.
- 9 REMOVE (3) EXISTING CMU COLUMNS.
- 10 REMOVE EXISTING CMU PLANTER.
- 11 SALVAGE EXISTING PAY STATION.
- 12 SALVAGE EXISTING FLAG POLE.
- 13 SALVAGE EXISTING DUMPSTER/TRASH COMPACTOR
- 14 REMOVE EXISTING HISTORIC BUILDING.
- 15 SEE ELECTRICAL SITE PLAN FOR NEW LOCATION.
- 16 PROTECT EXISTING UTILITY LINES.
- 17 REMOVE EXISTING SHED.

GENERAL TESC NOTES:

1. LOCATION OF TESC MEASURES SHOWN ARE APPROXIMATE AND SHALL BE FIELD LOCATED TO ACCOMMODATE SITE CONDITIONS AND WORK SCHEDULE.
2. RELOCATE TESC MEASURES, OR INSTALL NEW MEASURES, SO THAT AS THE SITE CONDITIONS CHANGE THE TESC IS ALWAYS IN COMPLIANCE WITH WSDOT TESC MINIMUM REQUIREMENTS. MAINTAIN TESC MEASURES IN ACCORDANCE WITH THE PROJECT SPECIFICATIONS, THE WSDOT STANDARDS, AND THE MANUFACTURER'S RECOMMENDATIONS.
3. CONTRACTOR SHALL NOT REMOVE ANY TREES WITHIN THE PROJECT LIMITS NOT IDENTIFIED FOR REMOVAL WITHOUT PRIOR APPROVAL FROM WSPRC.

LEGEND:

- TREE REMOVAL
- APPROX. CLEARING LIMITS
- WATTLE (WSDOT STD PLAN I-30.30)
- HIGH VISIBILITY SLIT FENCE (WSDOT STD PLAN I-30.17)
- HIGH VISIBILITY FENCE (WSDOT STD PLAN I-10.10)
- ASPHALT PAVING REMOVAL
- GRAVEL PAVING REMOVAL
- BUILDING/CONCRETE REMOVAL



SHEET 10 OF 108

CAD NO. K:\Project\33400\33427\CADD\ACAD\DWG\C-TESC & DEMO.dwg

	DATE
	APP.
	INT.
	REVISIONS
	NO.

ACTION	BY	DATE
DESIGNED	SMC	04/28/23
DRAWN	JT	04/28/23
CHECKED (FIELD)		
CHECKED (HDQTS.)		

PROJECT ENGINEER

WASHINGTON STATE PARKS AND RECREATION COMMISSION

CAPE DISAPPOINTMENT STATE PARK

WELCOME CENTER AND ENTRANCE IMPROVEMENTS

TESC & DEMOLITION PLAN

C0.3

SCALE 0 20' 40'

PARKS FILE#

PARKS FILE#

SCALE

20'

0 40'

SCALE

20'

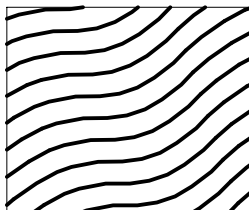
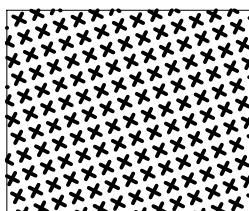
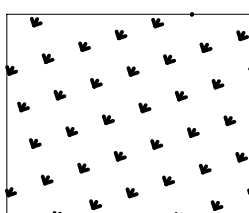
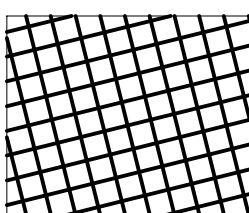
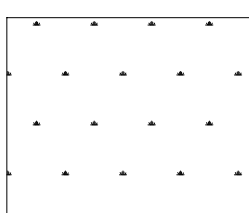
0 40'

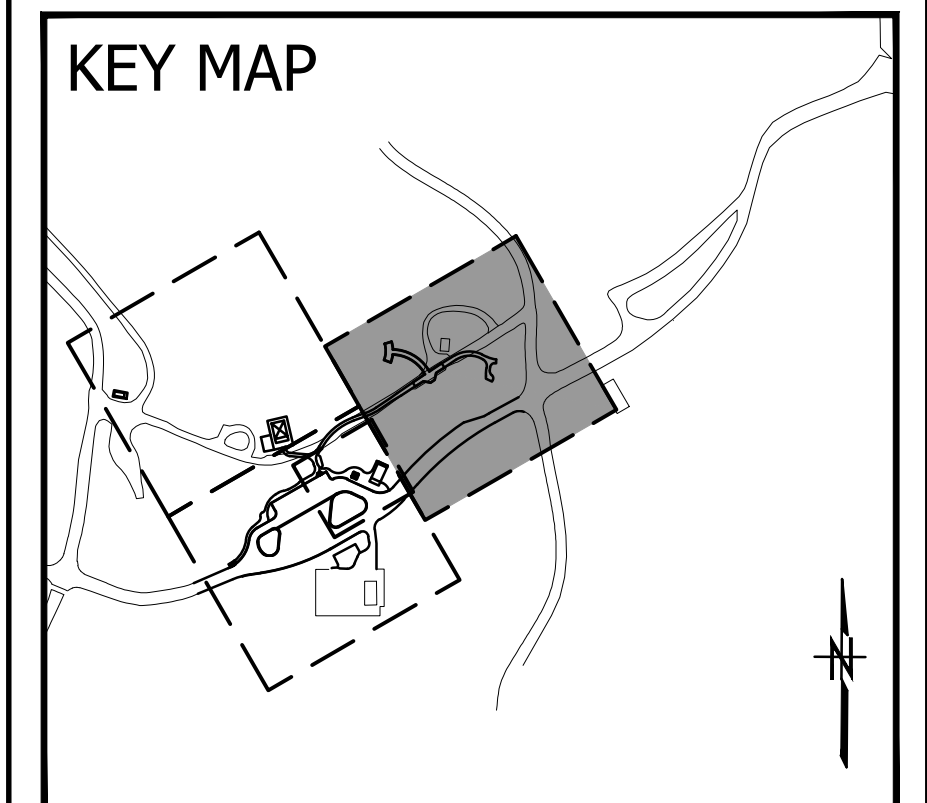


PLANTING RESTORATION NOTES

- 1 PLANTING UNDER EXISTING TREE CANOPY, PER DETAIL ON SHEET L2.1
- 2 PLANTING SOIL PREPARATION AT CREATED WETLANDS, PER DETAIL ON L2.0
- 3 SEED MIX SOIL PREPARATION, PER DETAIL ON L2.0
- 4 WETLAND ENHANCEMENT PLANTING, PER DETAIL ON L2.1
- 5 TYPICAL WETLAND PLANTING LAYOUT, PER DETAIL ON L2.2

LEGEND:

-  WETLAND CREATION
-  NATIVE BUFFER MEADOW SEED MIX
-  TURF LAWN SEED MIX
-  WETLAND ENHANCEMENT
-  EXISTING WETLAND TO REMAIN



SHEET 45 OF 108

CAD NO. K:\Project\33400\33427\CADD\ACAD\DWG\L-PLANTING PLAN.dwg

	DATE
	APP.
	INT.
REVISIONS	
NO.	

ACTION	BY	DATE
DESIGNED	SMC	04/28/23
DRAWN	JT	04/28/23
CHECKED (FIELD)		
CHECKED (HDQTS.)		

PROJECT ENGINEER

WASHINGTON
STATE
PARKS
AND
RECREATION
COMMISSION



CAPE
DISAPPOINTMENT
STATE PARK

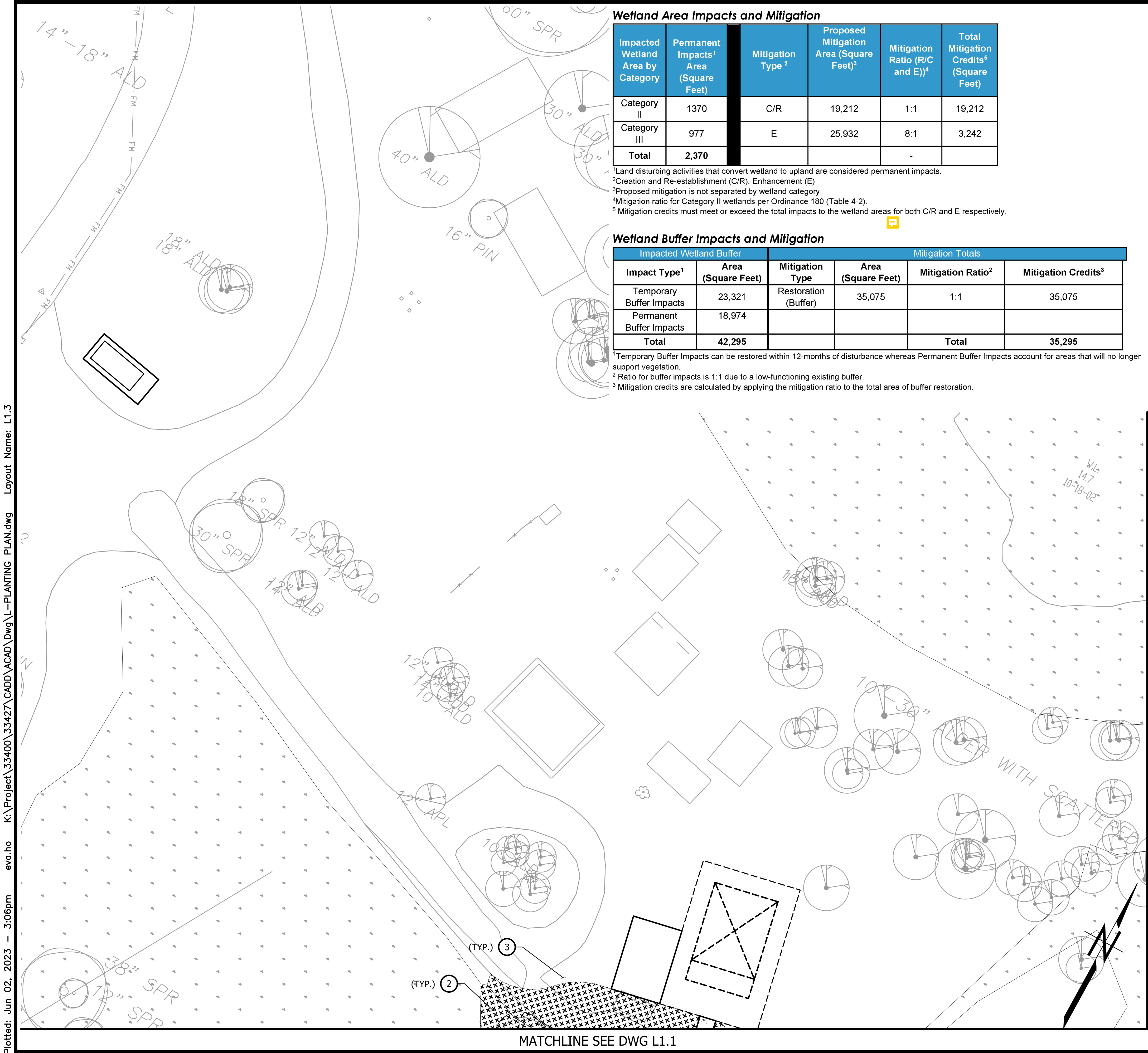
WELCOME CENTER
AND ENTRANCE
IMPROVEMENTS

RESTORATION
PLAN

L1.2



PARKS FILE#



Wetland Area Impacts and Mitigation

Impacted Wetland Area by Category	Permanent Impacts ¹ Area (Square Feet)	Mitigation Type ²	Proposed Mitigation Area (Square Feet) ³	Mitigation Ratio (R/C and E) ⁴	Total Mitigation Credits ⁵ (Square Feet)
Category II	1370	C/R	19,212	1:1	19,212
Category III	977	E	25,932	8:1	3,242
Total	2,370			-	

¹Land disturbing activities that convert wetland to upland are considered permanent impacts.
²Creation and Re-establishment (C/R), Enhancement (E)
³Proposed mitigation is not separated by wetland category.
⁴Mitigation ratio for Category II wetlands per Ordinance 180 (Table 4-2).
⁵Mitigation credits must meet or exceed the total impacts to the wetland areas for both C/R and E respectively.

Wetland Buffer Impacts and Mitigation

Impacted Wetland Buffer		Mitigation Totals			
Impact Type ¹	Area (Square Feet)	Mitigation Type	Area (Square Feet)	Mitigation Ratio ²	Mitigation Credits ³
Temporary Buffer Impacts	23,321	Restoration (Buffer)	35,075	1:1	35,075
Permanent Buffer Impacts	18,974				
Total	42,295			Total	35,295

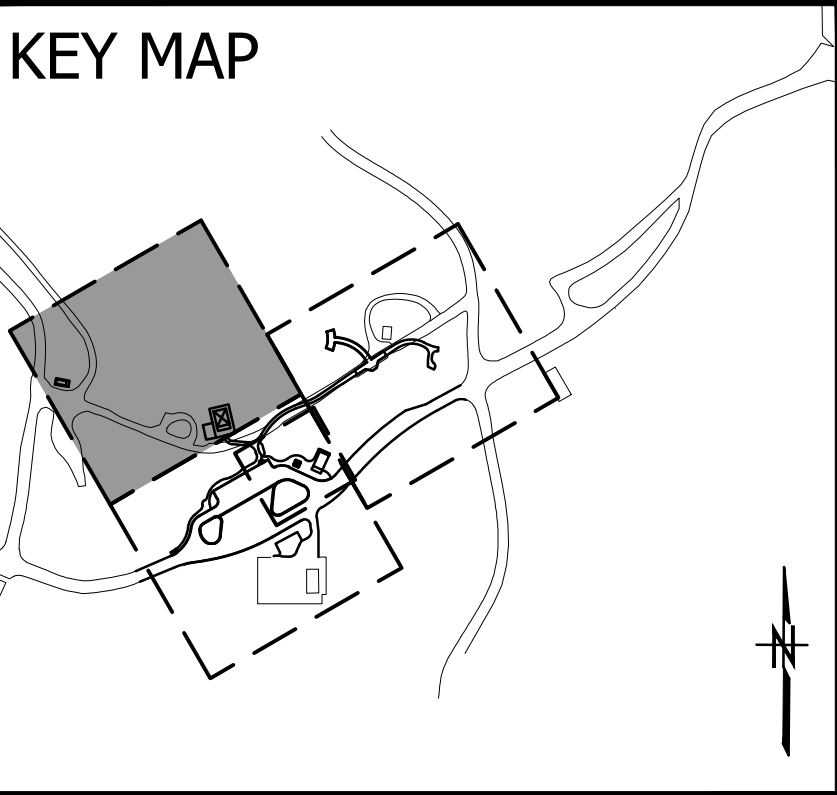
¹Temporary Buffer Impacts can be restored within 12-months of disturbance whereas Permanent Buffer Impacts account for areas that will no longer support vegetation.
²Ratio for buffer impacts is 1:1 due to a low-functioning existing buffer.
³Mitigation credits are calculated by applying the mitigation ratio to the total area of buffer restoration.

PLANTING RESTORATION NOTES

- 1 PLANTING UNDER EXISTING TREE CANOPY, PER DETAIL ON SHEET L2.1
- 2 PLANTING SOIL PREPARATION AT CREATED WETLANDS, PER DETAIL ON L2.0
- 3 SEED MIX SOIL PREPARATION, PER DETAIL ON L2.0
- 4 WETLAND ENHANCEMENT PLANTING, PER DETAIL ON L2.1
- 5 TYPICAL WETLAND PLANTING LAYOUT, PER DETAIL ON L2.2

LEGEND:

- WETLAND CREATION
- NATIVE BUFFER MEADOW SEED MIX
- TURF LAWN SEED MIX
- WETLAND ENHANCEMENT
- EXISTING WETLAND TO REMAIN



CAD NO. K:\Project\33400\33427\CADD\ACAD\DWG\L-PLANTING PLAN.dwg

	DATE
	APP.
	INT.
	REVISIONS
	NO.

ACTION	BY	DATE
DESIGNED	SMC	04/28/23
DRAWN	JT	04/28/23
CHECKED (FIELD)		
CHECKED (HDQTS.)		

PROJECT ENGINEER

WASHINGTON STATE PARKS AND RECREATION COMMISSION

CAPE DISAPPOINTMENT STATE PARK

WELCOME CENTER AND ENTRANCE IMPROVEMENTS

RESTORATION PLAN

L1.3

SCALE 0 20' 40'

PARKS FILE#