

WASHINGTON STATE PARKS & RECREATION COMMISSION



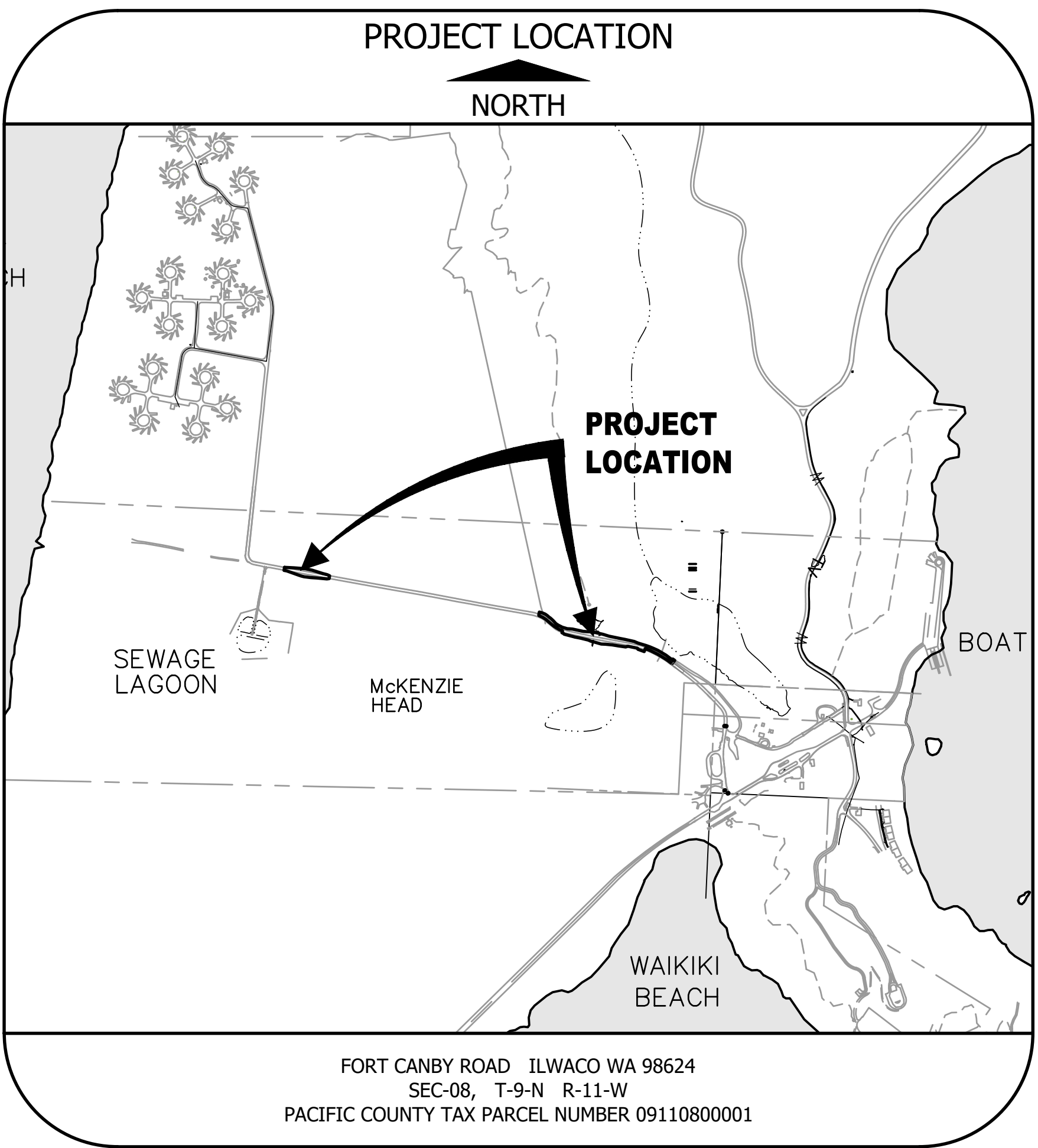
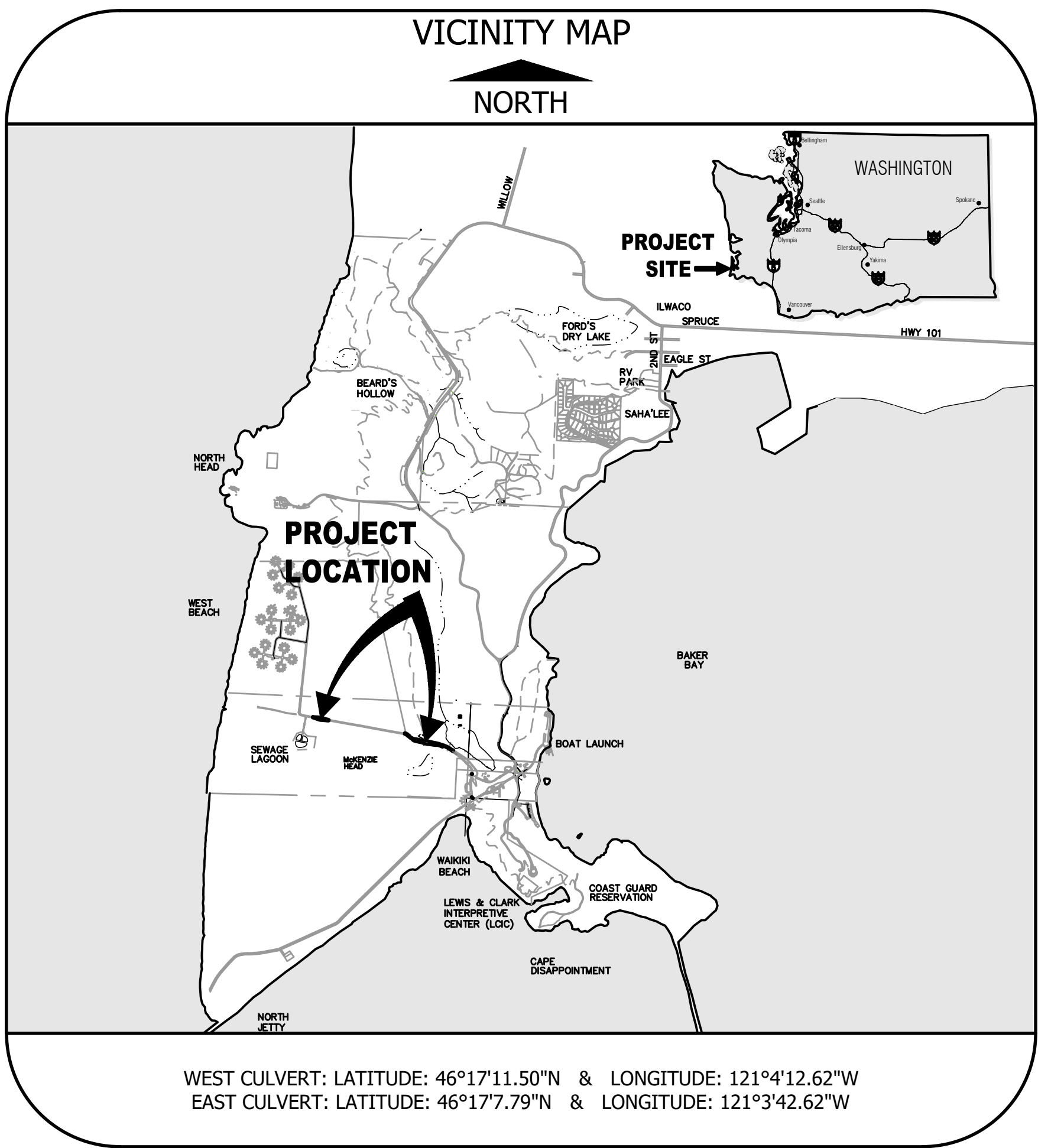
90% DESIGN
DO NOT USE FOR CONSTRUCTION

October 2023 date

Conсор
www.consoreng.com date

CAPE DISAPPOINTMENT STATE PARK REPLACE FAILING CULVERTS ON CAMPGROUND ACCESS ROAD 90% SUBMITTAL

Area Manager: EVAN ROBERTS



SHEET	INDEX	DESCRIPTION
1	G-1	COVER SHEET
2	G-2	PROJECT TEAM
3	G-3	GENERAL LEGEND
4	G-4	ABBREVIATIONS
5	G-5	CONSTRUCTION STAGING PLAN
6	ESC-1	EROSION CONTROL NOTES
7	ESC-2	EROSION CONTROL PLAN - 1
8	ESC-3	EROSION CONTROL PLAN - 2
9	C-1	EXISTING CONDITIONS
10	C-2	WESTERN CROSSING ROADWAY PLAN & PROFILE
11	C-3	EASTERN CROSSING ROADWAY PLAN & PROFILE - 1
12	C-4	EASTERN CROSSING ROADWAY PLAN & PROFILE - 2
13	C-5	EASTERN CROSSING ROADWAY PLAN & PROFILE - 3
14	C-6	ROADWAY DETAILS - 1
15	C-7	ROADWAY DETAILS - 2
16	C-8	WESTERN CROSSING CHANNEL GRADING PLAN AND PROFILE
17	C-9	EASTERN CROSSING CHANNEL GRADING PLAN AND PROFILE
18	C-10	WEST STRUCTURE DETAILS
19	C-11	EAST STRUCTURE DETAILS
20	C-12	UTILITY CROSSING DETAILS - 1
21	C-13	UTILITY CROSSING DETAILS - 2
22	C-14	BIOFILTRATION SWALE DETAILS
23	L-1	REVEGETATION PLAN - 1
24	L-2	REVEGETATION PLAN - 2
25	L-3	REVEGETATION SCHEDULE

C:\PDX_Projects\2\3342 - ESA - Cape Disappointment Failing Culverts Rep\CAD\Sheets

PROVIDED CONTROL POINTS

POINT	NORTHING	EASTING	ELEVATION	DESCRIPTION
CP59	366899.61	741152.53	20.24	PK NAIL
CP104	366634.22	741475.61	20.21	PK NAIL
CP105	366537.22	741420.28	21.97	PK NAIL

PROJECT DATUM

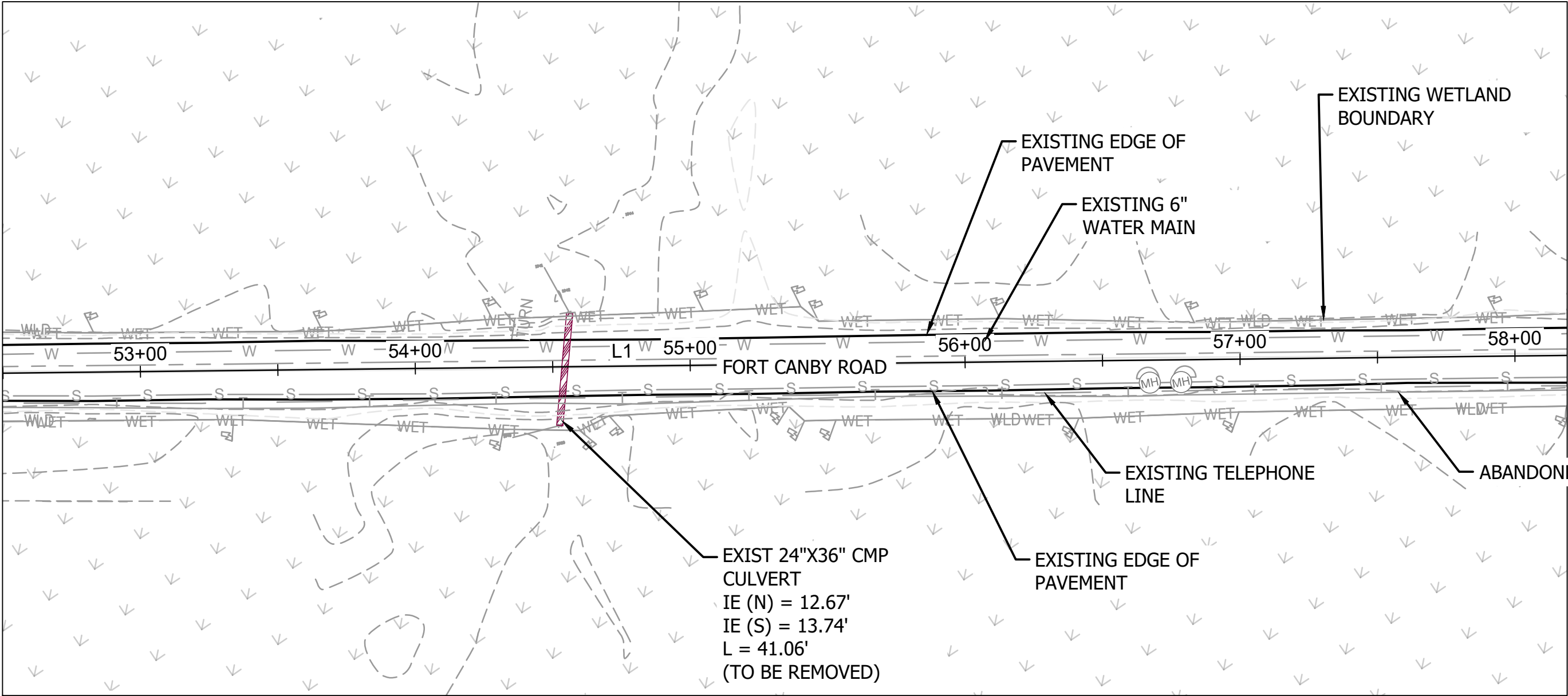
PROJECT DATUM BASED ON CONTROL POINTS CP59, CP104, AND CP105 PER PARAMETRIX FILE NAME B2542007P02T04G-01 CAD NO 236-2542-007 PER WASHINGTON STATE PARKS & RECREATION COMMISSION, CAPE DISAPPOINTMENT STATE PARK, INFRASTRUCTURE IMPROVEMENTS PHASE II, SHEET 2, APPROVED JULY 2004-AUGUST 2004. NOTE SURVEY INFORMATION PROVIDED BY HLB & ASSOCIATES AND BASED ON THE WASHINGTON STATE PLANE COORDINATE SYSTEM SOUTH ZONE NAD83/NAVD88.

MONITORING WELL ELEVATIONS

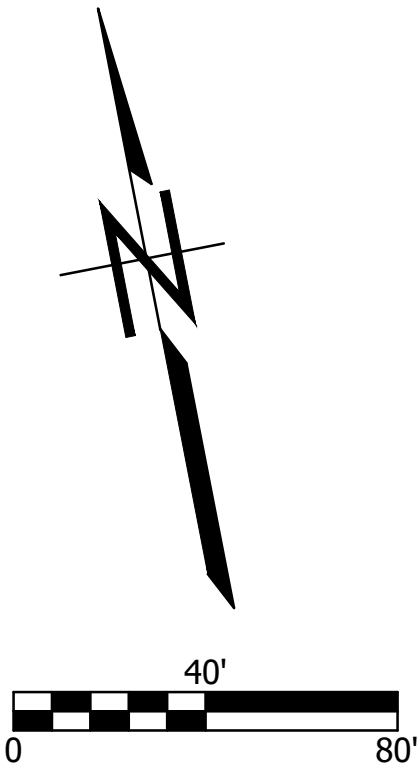
MONITORING WELL	NORTHING	EASTING	TOP PIPE ELEVATION	GROUND ELEVATION
MW1	367566.74	740237.38	19.05	13.0
MW2	367520.63	740238.22	19.48	13.5
MW3	368043.90	738149.27	18.17	11.9
MW4	367989.69	738136.78	19.54	13.1
MW5	367960.05	738581.17	19.30	12.9
MW6	367920.04	738542.77	18.66	12.2
MW7	367378.71	739963.97	17.15	12.1
MW8	368066.89	738177.23	19.55	13.3

NOTES

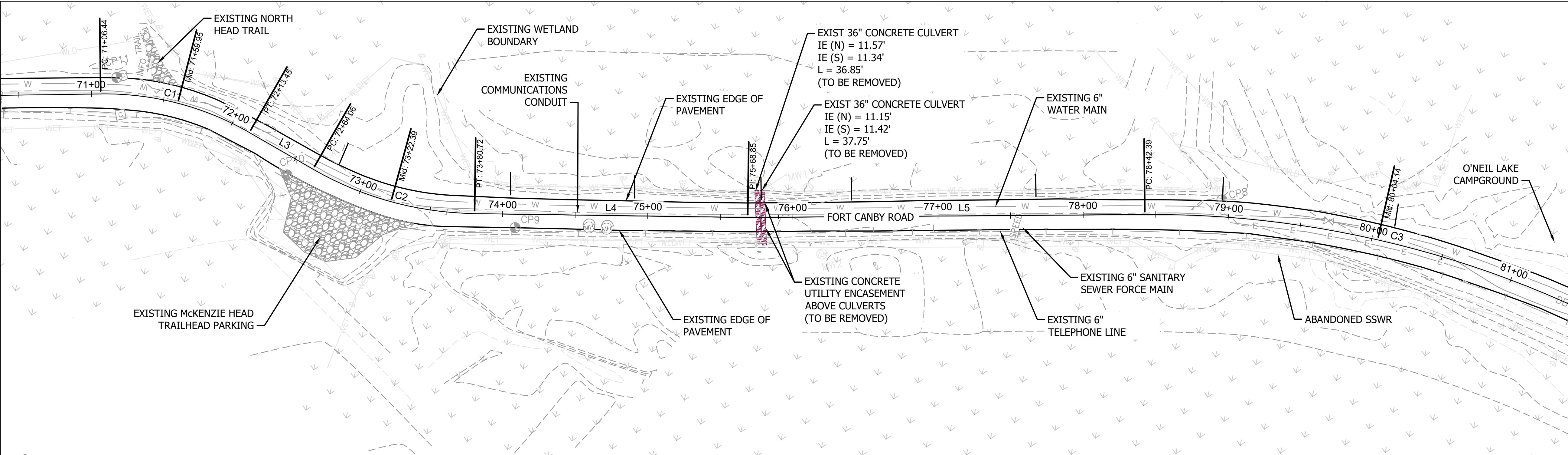
- 1) CONTOURS ARE AT 1' INTERVALS AND ARE COMPUTER GENERATED.
- 2) ALL MANHOLES WERE LOCATED AT CENTERLINE OF RIM.
- 3) UTILITIES SHOWN ON THE SURVEY HEREON WERE BASED IN PART UPON GROUND/VISUAL OBSERVATIONS AND AS PAINTED VIA UTILITY TICKET 550005336. THERE MAY BE UTILITIES ON THE SITE THAT WERE NOT VISIBLE THEREFORE, THEY ARE NOT SHOWN. THE ACTUAL LOCATION OF THE UNDERGROUND UTILITIES MAY VARY.
- 4) UTILITIES ALSO SHOWN IN PART BASED ON PARAMETRIX FILE NAME B2542007P02T04G-01 CAD NO 236-2542-007 PER WASHINGTON STATE PARKS AND RECREATION COMMISSION, CAPE DISAPPOINTMENT STATE PARK, INFRASTRUCTURE IMPROVEMENTS PHASE II, APPROVED JULY 2004-AUGUST 2004.
- 5) ALL EXISTING UTILITY LOCATIONS AND DETAILS ARE ASSUMED TO BE APPROXIMATE. CONTRACTOR TO FIELD VERIFY ALL EXISTING UTILITIES PRIOR TO CONSTRUCTION.
- (6)WETLAND BOUNDARIES DELINEATED BY ESA IN 2021



ALIGNMENT DATA TABLE			
Number	Length	Radius	Line/Chord Direction
L1	949.877		S79° 38' 58.00"E
L2	1156.560		S79° 47' 02.31"E
C1	107.017	200.000	S64° 27' 17.93"E
L3	50.606		S49° 07' 33.54"E
C2	116.658	230.000	S63° 39' 23.16"E
L4	188.134		S78° 11' 12.78"E
L5	273.542		S79° 25' 20.49"E
C3	323.482	700.000	S66° 11' 01.18"E
L6	51.964		S52° 56' 41.87"E



WESTERN CROSSING



EASTERN CROSSING

	DATE
	APP.
	INT.
DRAFT NOT FOR CONSTRUCTION	
	NO.

ACTION	BY	DATE
DESIGNED	CAS	
DRAWN	CAS	
CHECKED (FIELD)		
CHECKED (HDQTS.)		

90% DESIGN

DO NOT USE FOR CONSTRUCTION

October 2023

Conсор
www.consoreng.com

REGISTERED STAMP

WASHINGTON
STATE
PARKS
AND
RECREATION
COMMISSION

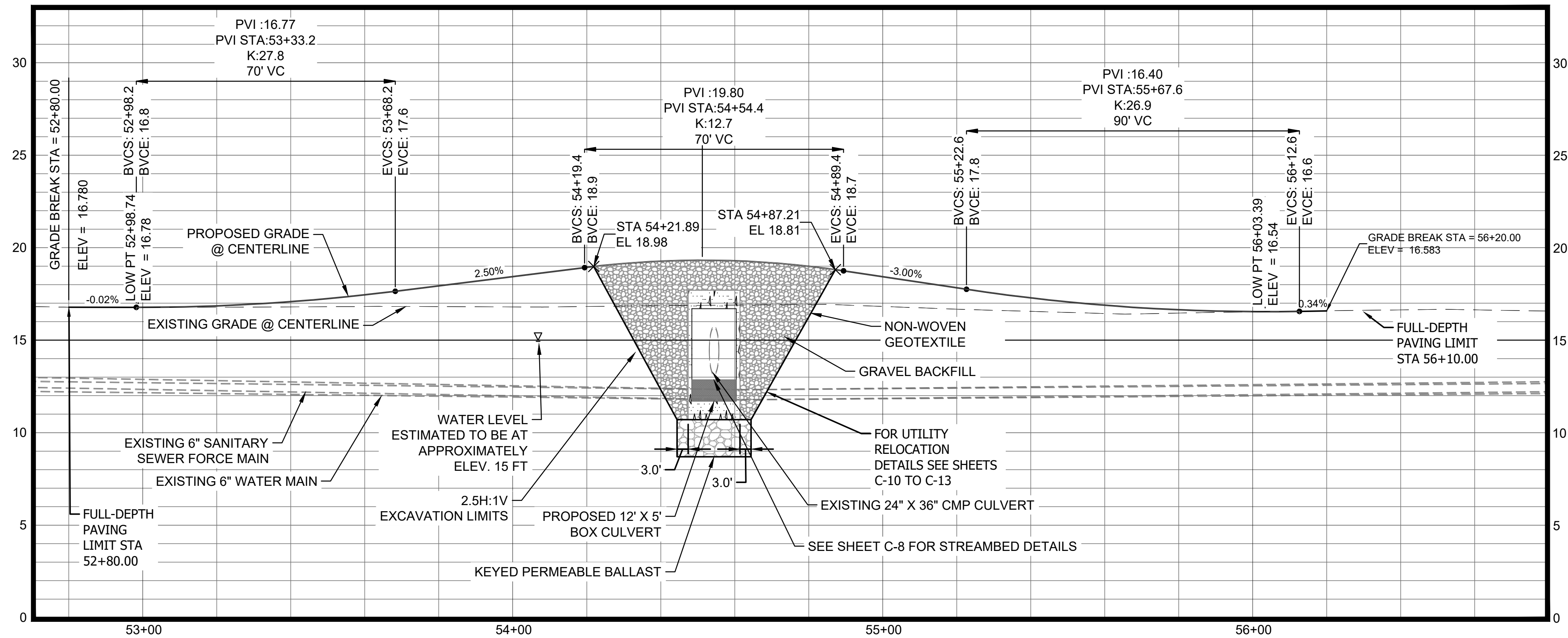
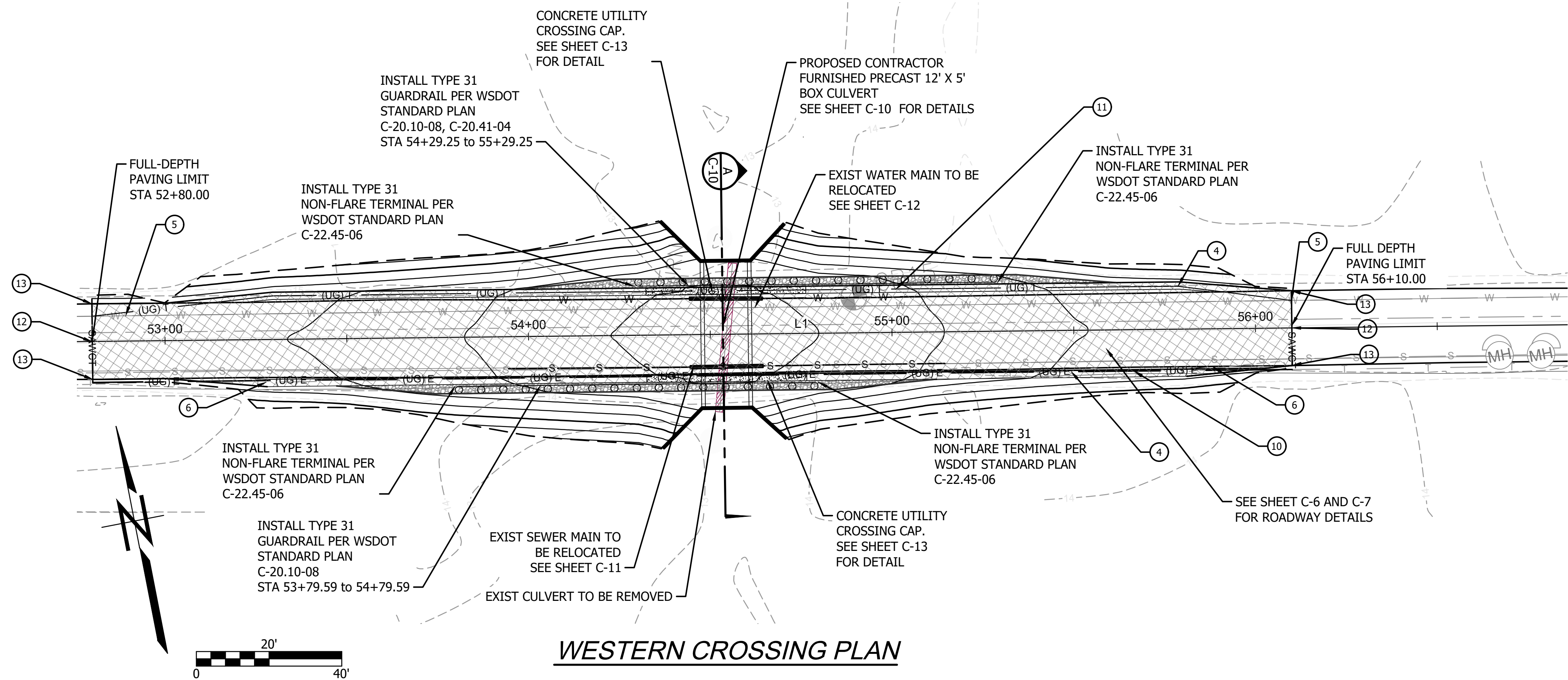
CAPE
DISAPPOINTMENT
STATE PARK

REPLACE FAILING
CULVERTS ON
CAMPGROUND
ACCESS ROAD

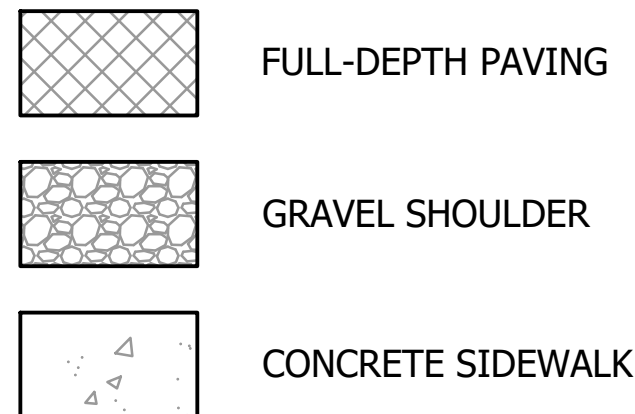
EXISTING
CONDITIONS

C-1
SCALE
AS SHOWN
PARKS FILE#

G:\PDX_Projects\21\3342 - ESA - Cape Disappointment Failing Culverts Rep\CAD\Sheets



LEGEND



CONSTRUCTION NOTES

- REMOVE EXISTING CONDUIT
- CUT AND RESTORE TELEPHONE LINE FROM 52+80.00 TO 56+10.00
- CUT AND RESTORE POWER LINE FROM 52+80.00 TO 56+10.00
- INSTALL 4" CONDUIT WITH POWER LINE
- INSTALL 2" CONDUIT WITH TELEPHONE LINE
- INSTALL 4" YELLOW DOUBLE CENTERLINE MARKING PER WSDOT STANDARD PLAN M-20.10-04. STA 52+80.00 TO STA 56+10.00
- INSTALL 8" WHITE SOLID LANE LINE MARKING PER WSDOT STANDARD PLAN M-20.10-04. STA 52+80.00 TO STA 56+10.00

GENERAL NOTES

- CONTRACTOR TO FIELD VERIFY EXISTING CULVERT LOCATIONS.
- PROPOSED BOX CULVERT LOCATION AND ELEVATIONS ARE APPROXIMATE AND MAY BE MODIFIED BY THE CONTRACTOR AS REQUIRED TO INSTALL CONTRACTOR DESIGNED BURIED STRUCTURE. ALL REVISED INFORMATION SHALL BE APPROVED BY THE ENGINEER PRIOR TO CONSTRUCTION.
- CULVERT EXCAVATION LIMITS SHOWN ARE APPROXIMATE. CONTRACTOR IS RESPONSIBLE FOR DETERMINING TEMPORARY EXCAVATION LIMITS. INCLUDING ANY SHORING.
- EXISTING WATER LINE, EXISTING SANITARY FORCE MAIN, EXISTING POWER LINE, AND EXISTING TELEPHONE LINE MAY BE OFFLINE DURING CONSTRUCTION. CONTRACTOR TO COORDINATE WITH WASHINGTON STATE PARKS PRIOR TO SERVICE INTERRUPTION. LOCATIONS SHOWN ARE APPROXIMATE, FIELD VERIFY. (TYP)
- CONTRACTOR TO FIELD VERIFY EXISTING UTILITY LOCATIONS. (TYP)
- CONTRACTOR TO COORDINATE WITH WASHINGTON STATE PARKS PRIOR TO UTILITY SERVICE INTERRUPTION. LOCATIONS OF EXISTING AND PROPOSED UTILITIES SHOWN ARE APPROXIMATE, FIELD VERIFY WITH THE OWNER PRIOR TO CONSTRUCTION. (TYP)
- PER THE PROJECT SPECIFICATIONS GRAVEL BACKFILL SHALL CONSIST OF:
 - GRAVEL BORROW (ABOVE WATER LEVEL) COARSE AGGREGATE TYPE A1
 - GRAVEL BACKFILL FOR DRAINS (BELOW WATER LEVEL) COARSE AGGREGATE TYPE A1
 - PERMEABLE BALLAST (BELOW WATER LEVEL) COARSE AGGREGATE TYPE A3

CAD NO. XX

DRAFT
NOT FOR
CONSTRUCTION

ACTION	BY	DATE
DESIGNED	CAS	
DRAWN	CAS	
CHECKED (FIELD)		
CHECKED (HQTS.)		

90% DESIGN

DO NOT USE FOR CONSTRUCTION

October 2023

Conсор

www.consoreng.com

REGISTERED STAMP

WASHINGTON
STATE
PARKS
AND
RECREATION
COMMISSION



CAPE
DISAPPOINTMENT
STATE PARK

REPLACE FAILING
CULVERTS ON
CAMPGROUND
ACCESS ROAD

WESTERN CROSSING
ROADWAY
PLAN & PROFILE

C-2

SCALE

AS SHOWN

PARKS FILE#

SHEET 10 OF 25

