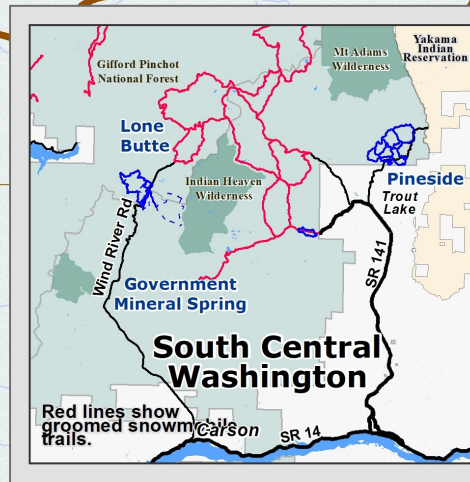


Welcome

Koshko
Oldman Pass
McClellan Meadows
Sno Parks

Groomed Trail System



Explanation

- Groomed Ski Trail
- Marked Ski Route
- SnoParks
- Snow Play
- View
- Access Road
- Major Forest Road
- Road
- Wilderness Area
- Gifford Pinchot National Forest

Trail System has 25 km (15.5 miles) of groomed cross country ski trails.

Road Number
Kilometers

Snow grooming equipment may be on the trail at any time.

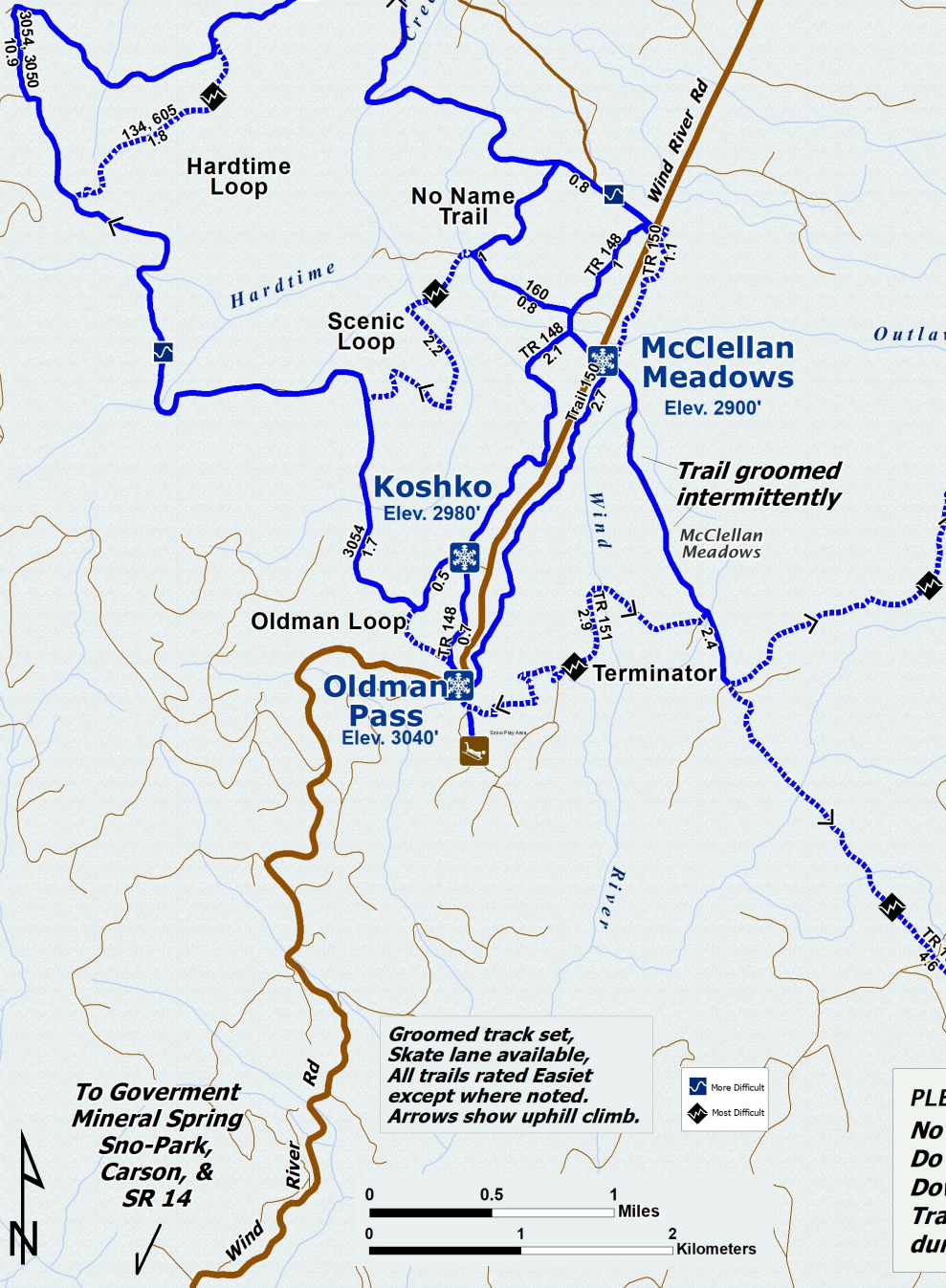
Trail grooming schedules may change without notice due to snow conditions, temperatures, equipment breakdowns, etc.

Be aware of potential avalanche danger, check www.nwac.us before you leave home.

*Trail grooming schedules and maps at www.parks.wa.gov/winter
Please report errors or comments to: winter@parks.wa.gov*

For Emergency Call 911
Skamania Co. Sheriff 509-427-9490

To Lone Butte Sno-Park



**Groomed track set,
Skate lane available,
All trails rated Easiest
except where noted.
Arrows show uphill climb.**

- More Difficult
- Most Difficult

PLEASE REMEMBER:
No dogs or snowshoes on groomed ski track.
Do not walk on the groomed trail.
Downhill skiers have the right of way.
Trails may become more difficult during icy conditions.

To Government
Mineral Spring
Sno-Park,
Carson, &
SR 14