

# Welcome Deer Creek Nordic Sno-Park

## Groomed Trail System

### Explanation

- Temporary Closure
- Non-Motorized Sno-Park
- Groomed Ski Trail
- Marked Ski Route
- Trail Junction
- Restroom
- View
- Access Road
- Road
- Trail

**Area has 9 kilometers (5.5 miles) of groomed cross country ski trails. Distance labeled between intersections. Dog friendly area.**



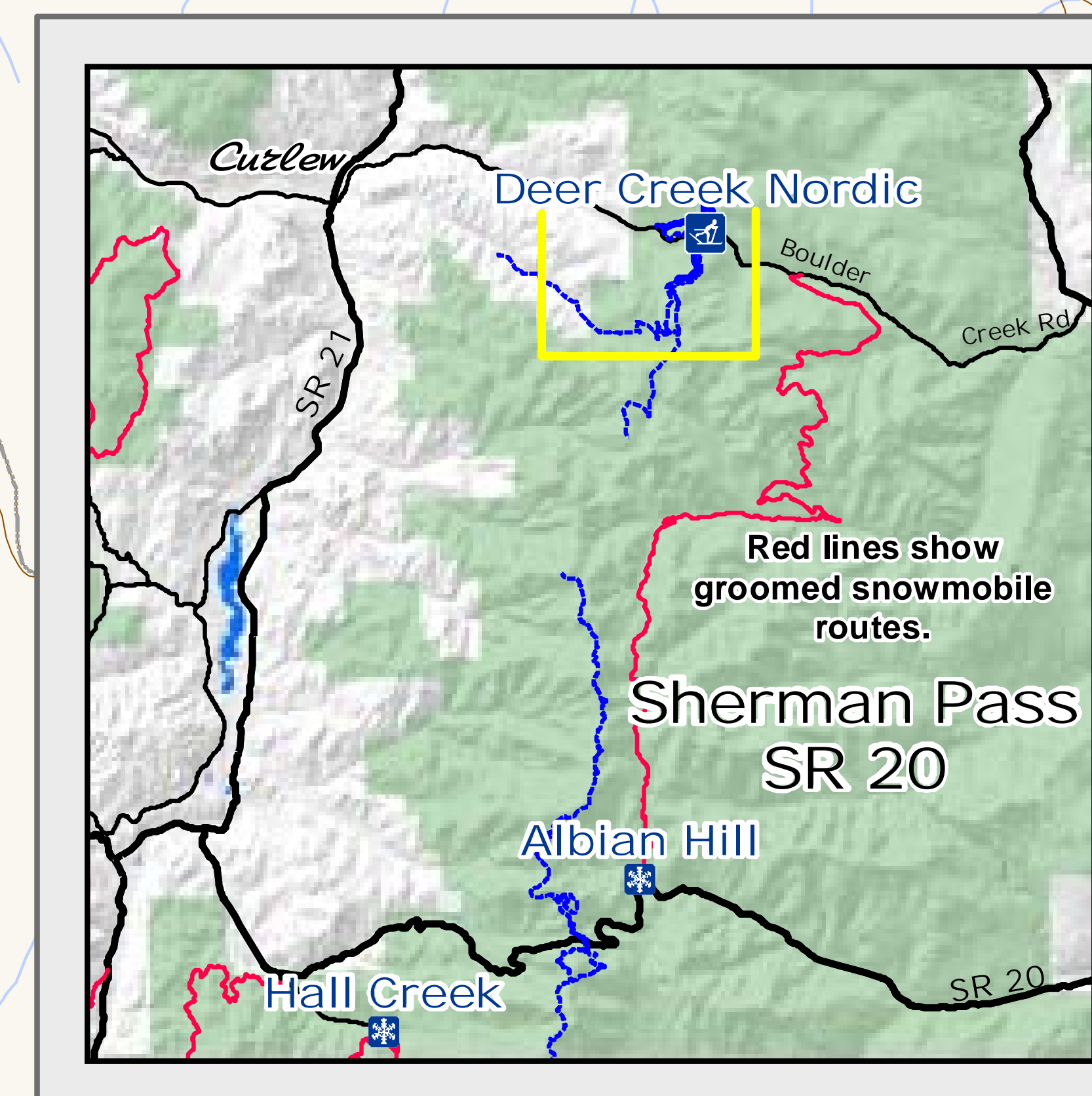
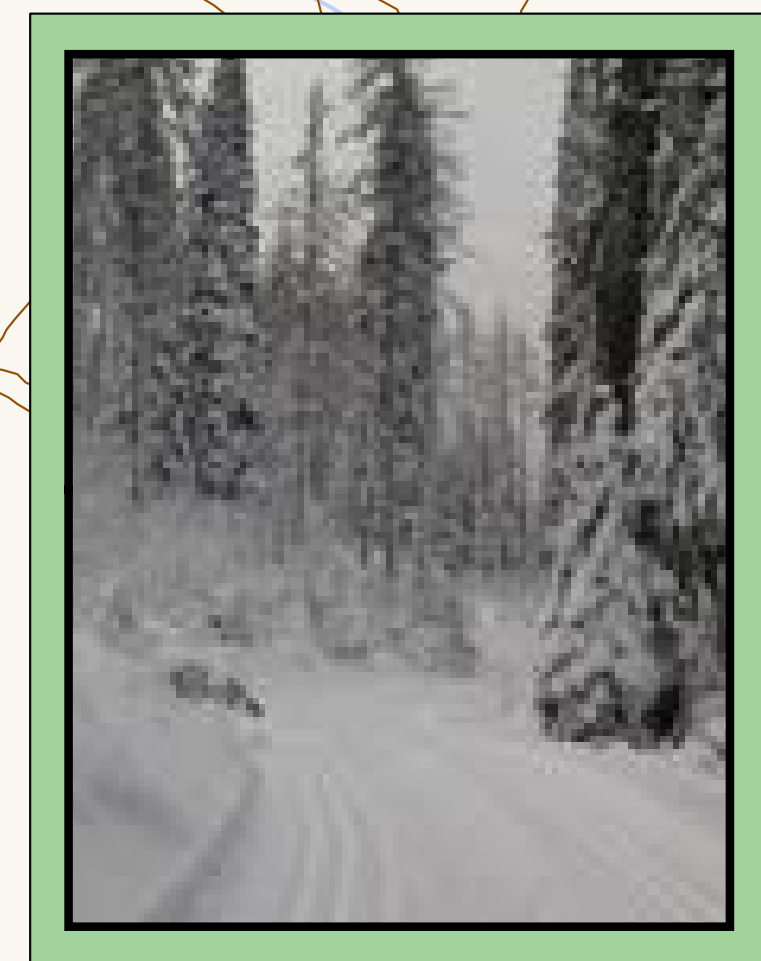
*Snow grooming equipment may be on the trail at any time.*

*Trail grooming schedules may change without notice due to snow conditions, temperatures, equipment breakdowns, etc.*

*Be aware of potential avalanche danger, check [www.nwac.us](http://www.nwac.us) before you leave home.*

*Trail grooming schedules and maps at [www.parks.wa.gov/winter](http://www.parks.wa.gov/winter)  
Please report errors or comments to: [winter@parks.wa.gov](mailto:winter@parks.wa.gov)*

**For Emergency Call 911  
Ferry Co. Sheriff 509-775-3132**



- Easiest
- More Difficult
- Most Difficult

**PLEASE REMEMBER:**  
No snowshoes on groomed track.  
Do not walk on the groomed trail.  
Downhill skiers have the right of way.  
Trails may become more difficult during icy conditions.

