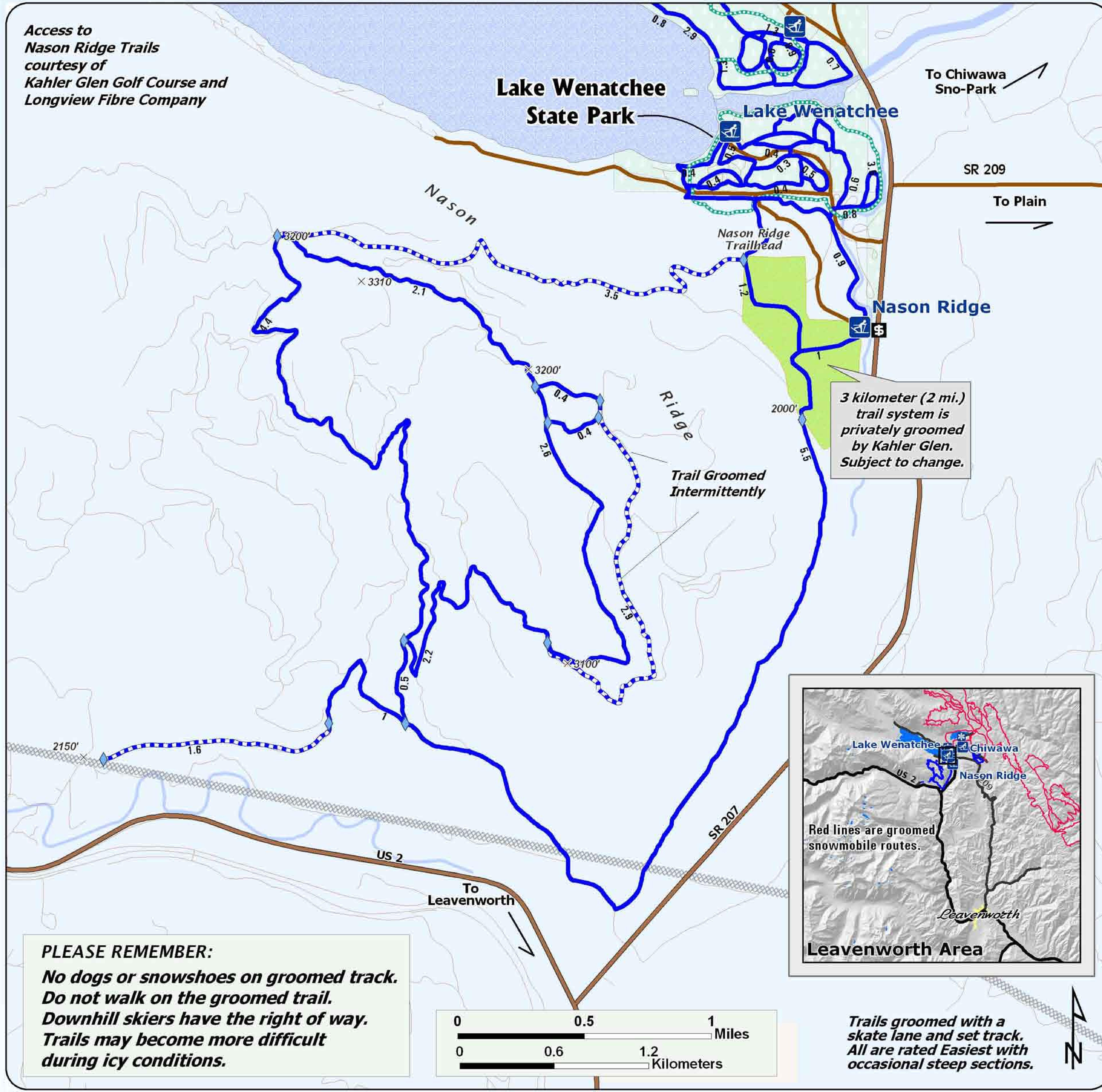


Access to  
Nason Ridge Trails  
courtesy of  
Kahler Glen Golf Course and  
Longview Fibre Company

# Welcome Nason Ridge Sno-Park Groomed Trail System



## Explanation

- CartoColorTint
- Non-Motorized Sno-Park
- Groomed Ski Trail
- Trail Not Groomed
- Designated Snowshoe Trail
- Trail Junction
- Elevation in Feet
- Restroom
- Highway
- Sno-Park Access Road
- Road or Trail
- Utility Corridor
- Park Boundary
- Kahler Glen Golf Course
- Special Grooming Permit Required

**Nason Ridge has 22 kilometers (12 mi.) of groomed cross country ski trails. Distance labeled between intersections.**



*Snow grooming equipment may be on the trail at any time.*

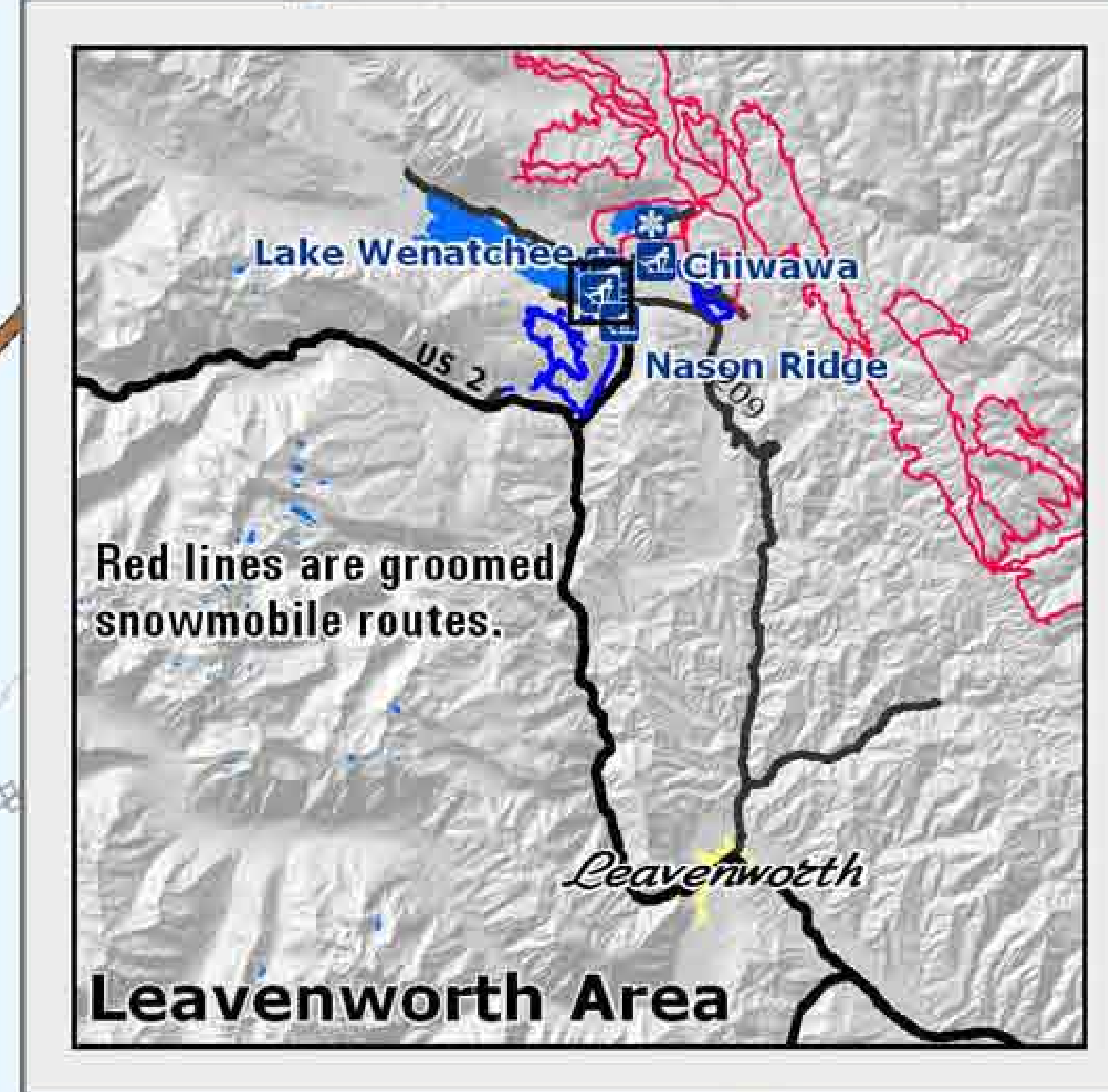
*Trail grooming schedules may change without notice due to snow conditions, temperatures, equipment breakdowns, etc.*

*Be aware of potential avalanche danger, check [www.nwac.us](http://www.nwac.us) before you leave home.*

*Trail grooming schedules and maps at [www.parks.wa.gov/winter](http://www.parks.wa.gov/winter)  
Please report errors or comments to: [winter@parks.wa.gov](mailto:winter@parks.wa.gov)*

**For Emergency Call 911  
Lake Wenatchee SP 509-630-0038  
or Chelan Co. Sheriff 509-663-9911**

**PLEASE REMEMBER:**  
*No dogs or snowshoes on groomed track.  
Do not walk on the groomed trail.  
Downhill skiers have the right of way.  
Trails may become more difficult during icy conditions.*



*Trails groomed with a skate lane and set track. All are rated Easiest with occasional steep sections.*

