





# Welcome Mount Spokane Sno-Park Groomed Trail System

## Explanation

-  Joint Use Sno-Park
-  Groomed Snowmobile Trail
-  Groomed Ski Trail, No Snowmobiling
-  Snowshoe Trail, No Grooming
-  Sno-Park Access Road
-  Trail Junction
-  Restroom
-  Shelter
-  Elevation in Feet
-  Highway
-  Park Boundary
-  creeksforXCmaps
-  Direction of Climb
-  Special Grooming Permit Required

Area has 23 kilometers of groomed cross country ski trails. Trail name and distance labeled between intersections.

Kilometers

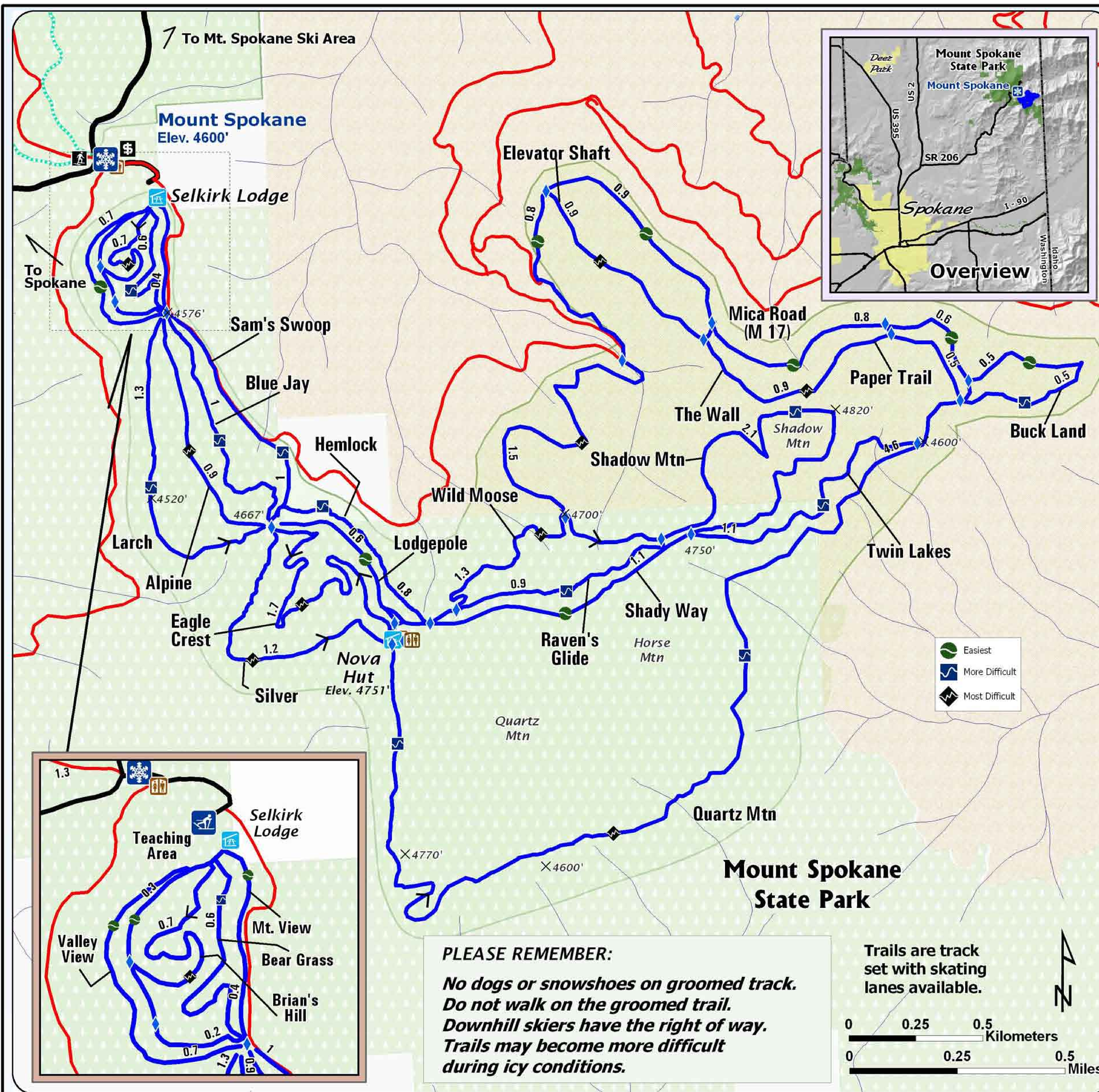
*Snow grooming equipment may be on the trail at any time.*

*Trail grooming schedules may change without notice due to snow conditions, temperatures, equipment breakdowns, etc.*

*Be aware of potential avalanche danger, check [www.nvac.us](http://www.nvac.us) before you leave home.*

*Trail grooming schedules and maps at [www.parks.wa.gov/winter](http://www.parks.wa.gov/winter)  
Please report errors or comments to: [winter@parks.wa.gov](mailto:winter@parks.wa.gov)*

**For Emergency Call 911  
Spokane Co. Sheriff 509-532-8940**



**PLEASE REMEMBER:**  
*No dogs or snowshoes on groomed track.  
 Do not walk on the groomed trail.  
 Downhill skiers have the right of way.  
 Trails may become more difficult during icy conditions.*

Trails are track set with skating lanes available.

0 0.25 0.5 Kilometers  
 0 0.25 0.5 Miles

