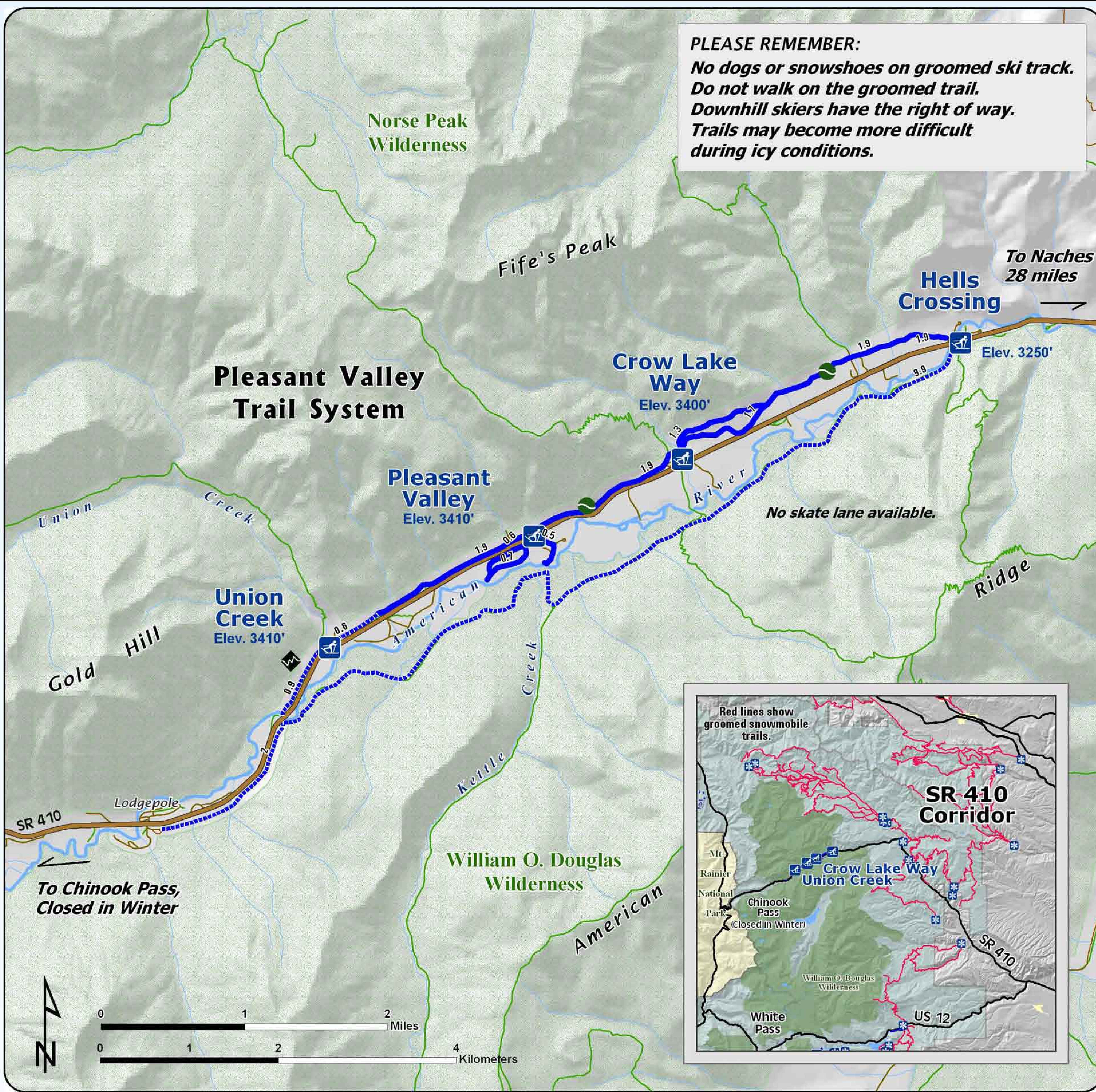


Welcome Hells Crossing Sno-Park Groomed Trail System

PLEASE REMEMBER:
*No dogs or snowshoes on groomed ski track.
 Do not walk on the groomed trail.
 Downhill skiers have the right of way.
 Trails may become more difficult
 during icy conditions.*



Explanation

- Non-Motorized Sno-Park
 - Groomed Ski Trail
 - Marked Ski Route
 - Highway
 - Road
 - Trail
 - Wilderness Area
-
- Easiest
 - More Difficult
 - Most Difficult

**Pleasant Valley Trail System
has 11 kilometers (6 miles) of
groomed cross country ski trails.**

Kilometers

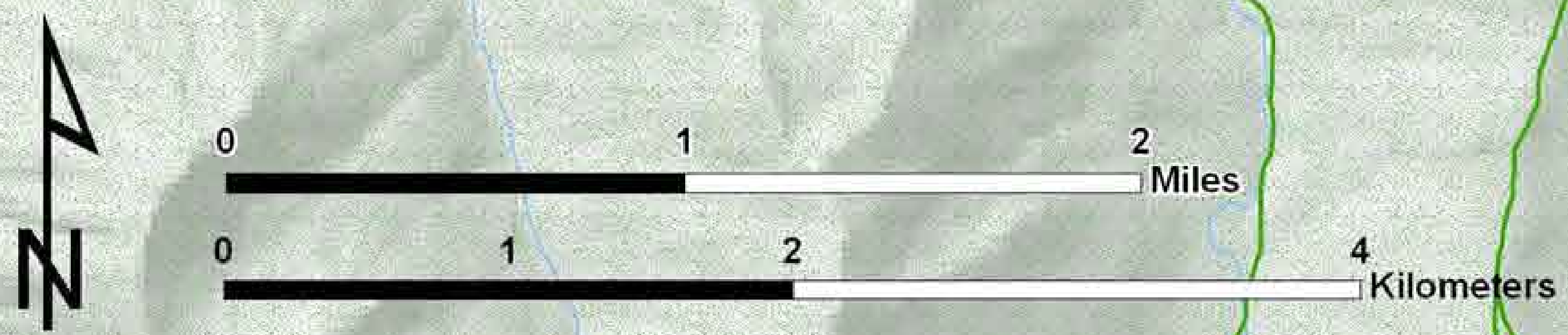
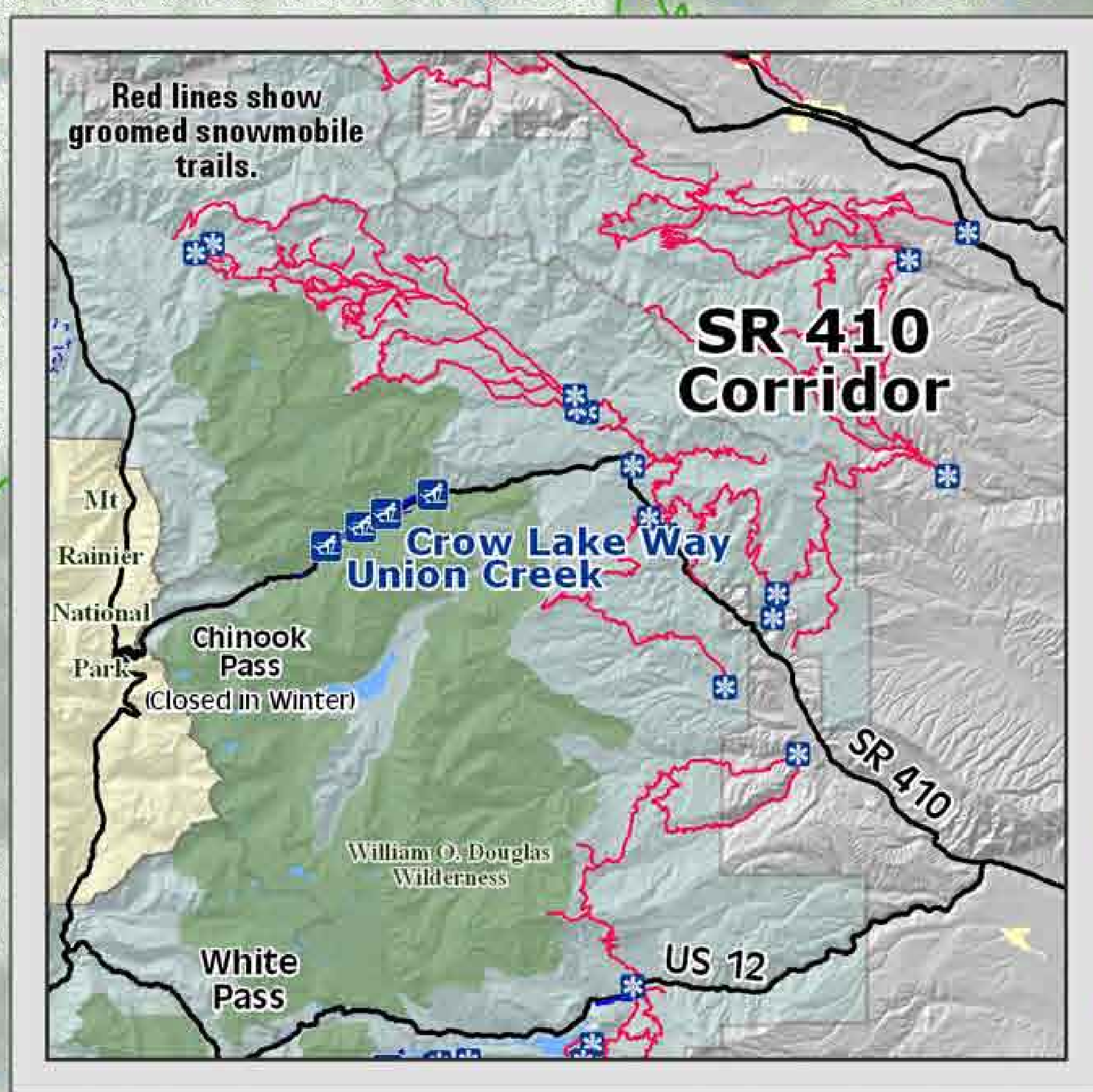
*Snow grooming equipment may
be on the trail at any time.*

*Trail grooming schedules may change
without notice due to snow conditions,
temperatures, equipment breakdowns, etc.*

*Be aware of potential avalanche danger,
check www.nvac.us before you leave home.*

*Trail grooming schedules and maps at
www.parks.wa.gov/winter
Please report errors or comments to:
winter@parks.wa.gov*

**For Emergency Call 911
Yakima Co. Sheriff 509-574-2500**



**To Chinook Pass,
Closed in Winter**

Source: \map\pvt410.mxd - Version: 12/03/2010