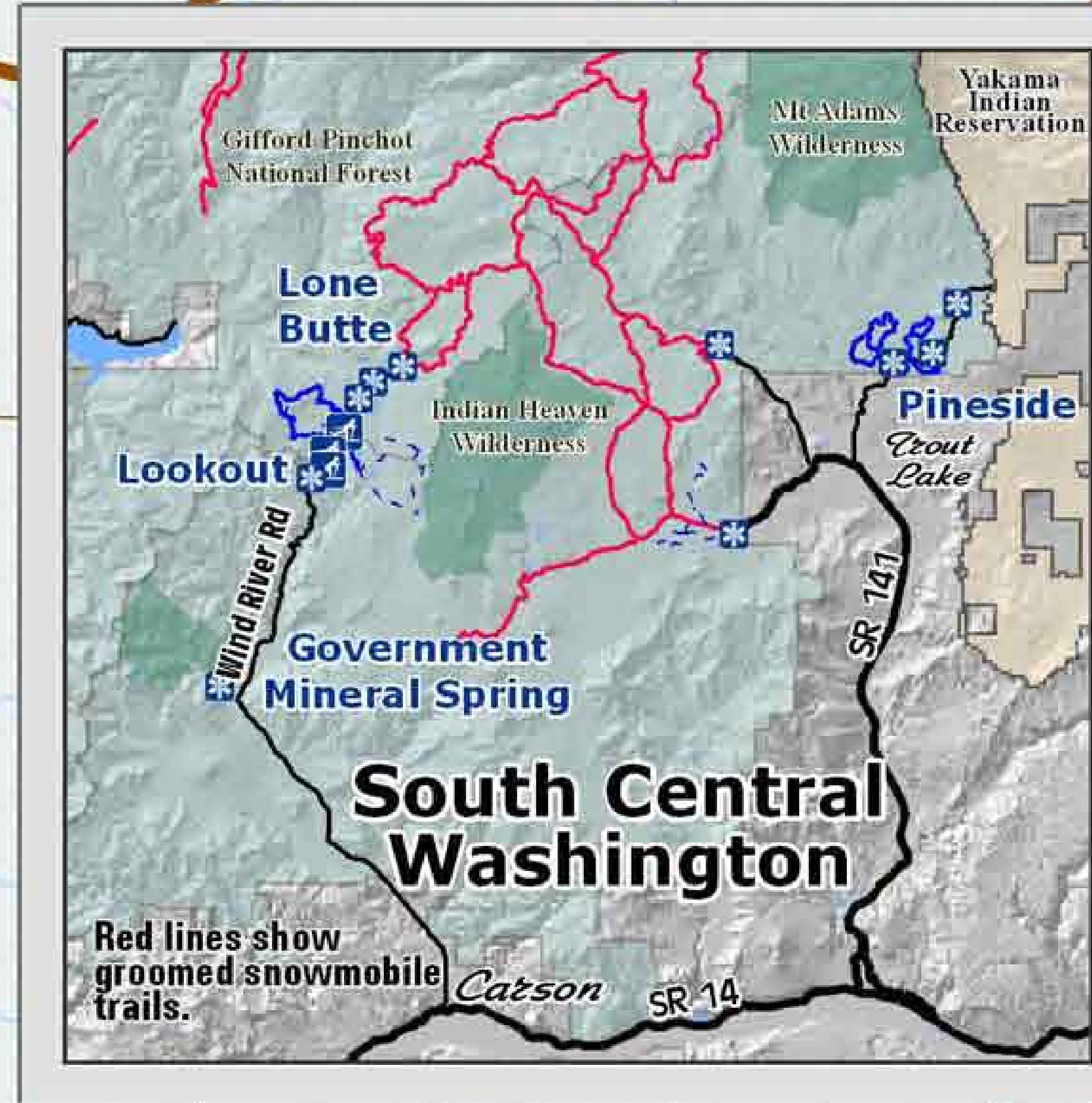


Welcome Curley Creek Sno-Park Groomed Trail System



Explanation

- Non-Motorized Sno-Park
- Joint-Use Sno-Park
- Groomed Ski Trail
- Marked Ski Route
- Non-Motorized
- View
- Access Road
- Major Forest Road
- Road
- Wilderness Area
- Gifford Pinchot National Forest

**Wind River Trail System
has 24 kilometers (15 miles) of
groomed cross country ski trails.**

Road Number
Kilometers

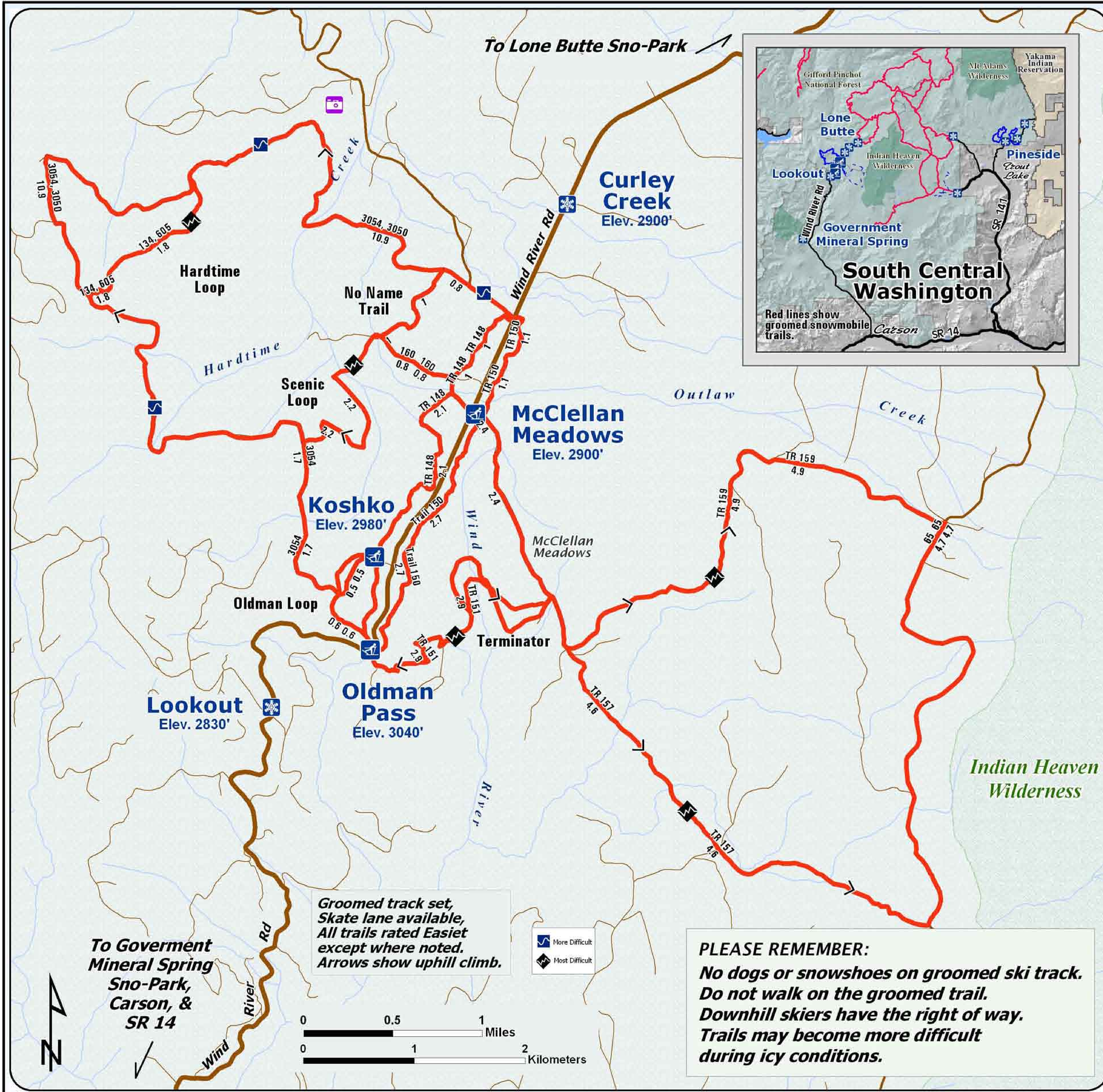
*Snow grooming equipment may
be on the trail at any time.*

*Trail grooming schedules may change
without notice due to snow conditions,
temperatures, equipment breakdowns, etc.*

*Be aware of potential avalanche danger,
check www.nwac.us before you leave home.*

*Trail grooming schedules and maps at
www.parks.wa.gov/winter
Please report errors or comments to:
winter@parks.wa.gov*

**For Emergency Call 911
Skamania Co. Sheriff 509-427-9490**

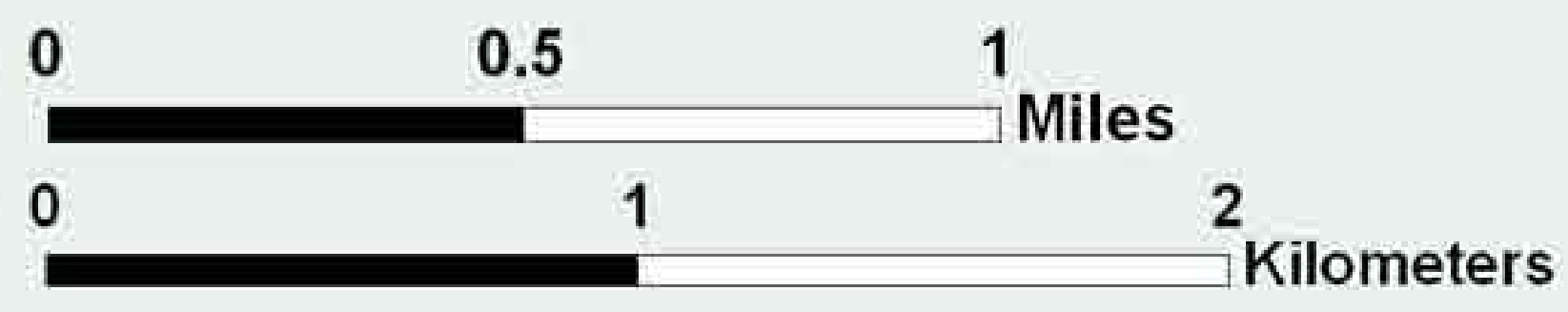


To Lone Butte Sno-Park

To Government
Mineral Spring
Sno-Park,
Carson, &
SR 14

**Groomed track set,
Skate lane available,
All trails rated Easiest
except where noted.
Arrows show uphill climb.**

- More Difficult
- Most Difficult



PLEASE REMEMBER:
No dogs or snowshoes on groomed ski track.
Do not walk on the groomed trail.
Downhill skiers have the right of way.
**Trails may become more difficult
during icy conditions.**