

# Welcome Crystal Springs Sno-Park Groomed Trail System

**PLEASE REMEMBER:**  
No dogs or snowshoes on groomed ski track.  
Do not walk on the groomed trail.  
Downhill skiers have the right of way.  
Trails may become more difficult  
during icy conditions.

## Explanation

- Non-Motorized Sno-Park
- Joint Use Sno-Park
- Groomed Snowmobile Trail
- Groomed Ski Trail
- Marked Ski Route
- Designated Snowshoe Trail
- Proposed Sled Dog Trail
- Shelter
- Restroom
- Highway
- Sno-Park Access Road
- Road
- Utility Corridor
- John Wayne Pioneer Trail
- Ski Area, No Snowmobiling
- State Park
- Club Trail System Key
- Special Grooming Permit Required

Area has 20 kilometers of groomed cross country ski trails, and a 3 kilometer designated snowshoe route.

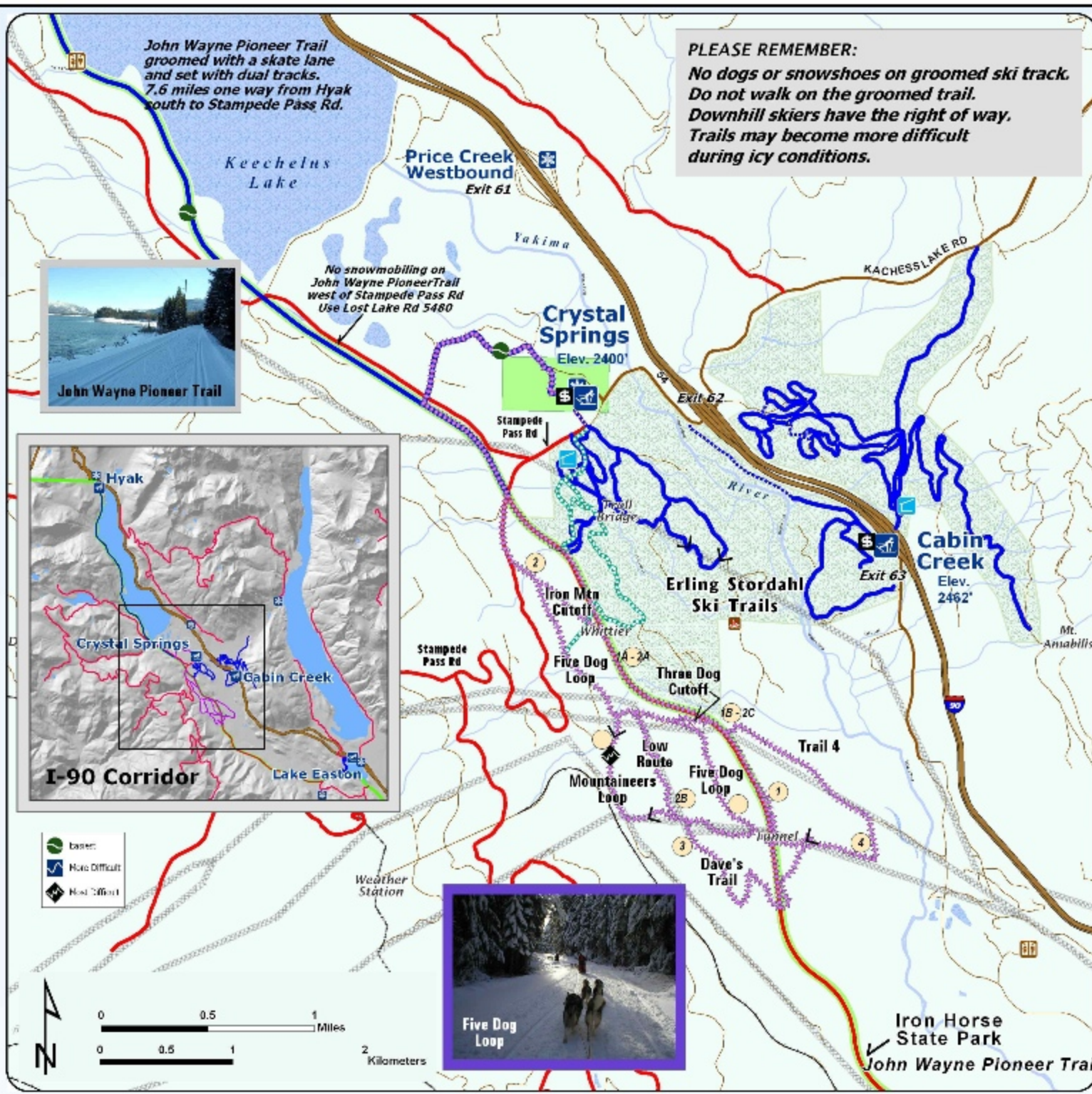
*Snow grooming equipment may be on the trail at any time.*

*Trail grooming schedules may change without notice due to snow conditions, temperatures, equipment breakdowns, etc.*

*Be aware of potential avalanche danger, check [www.wvac.us](http://www.wvac.us) before you leave home.*

*Trail grooming schedules and maps at [www.parks.wa.gov/winter](http://www.parks.wa.gov/winter)  
Please report errors or comments to: [winter@parks.wa.gov](mailto:winter@parks.wa.gov)*

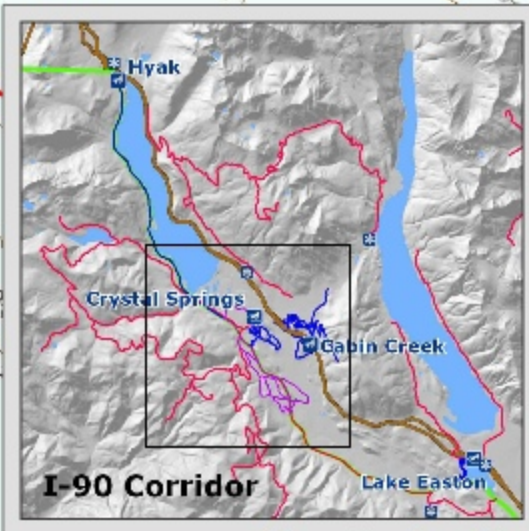
**For Emergency Call 911  
Kittitas Co. Sheriff 509-925-8534**



John Wayne Pioneer Trail groomed with a skate lane and set with dual tracks. 7.6 miles one way from Hyak south to Stampede Pass Rd.



No snowmobiling on John Wayne Pioneer Trail west of Stampede Pass Rd. Use Lost Lake Rd 5480



- Easier
- More Difficult
- Most Difficult

